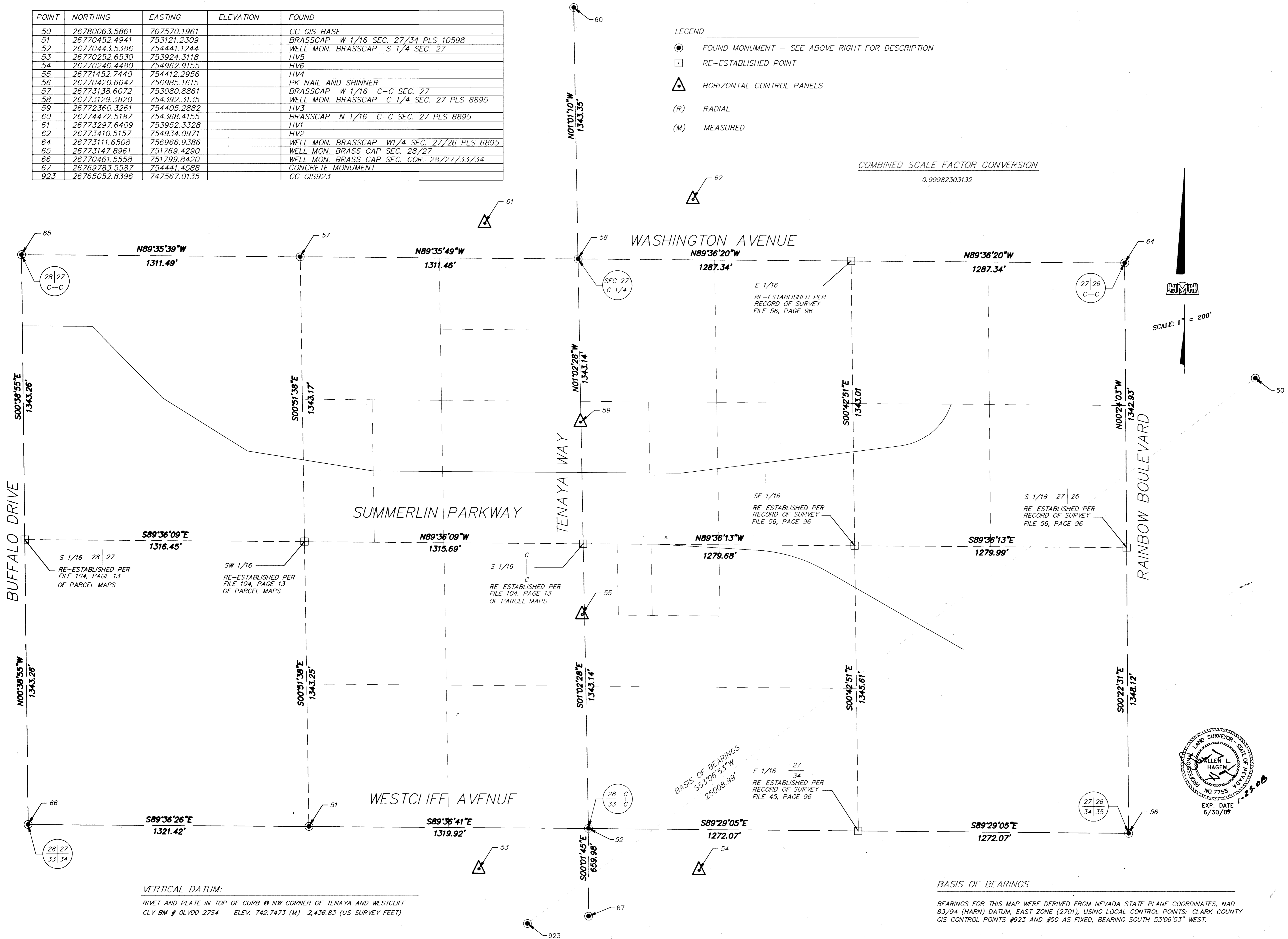


POINT	NORTHING	EASTING	ELEVATION	FOUND
50	26780063.5861	767570.1961		CC GIS BASE
51	26770452.4941	753121.2309		BRASSCAP W 1/16 SEC. 27/34 PLS 10598
52	26770443.5386	754441.1244		WELL MON. BRASSCAP S 1/4 SEC. 27
53	26770252.6530	753924.3118		HV5
54	26770246.4480	754962.9155		HV6
55	26771452.7440	754412.2956		HV4
56	26770420.6647	756985.1615		PK NAIL AND SHINNER
57	26773138.6072	753080.8861		BRASSCAP W 1/16 C-C SEC. 27
58	26773129.3820	754392.3135		WELL MON. BRASSCAP C 1/4 SEC. 27 PLS 8895
59	26772360.3261	754405.2882		HV3
60	26774472.5187	754368.4155		BRASSCAP N 1/16 C-C SEC. 27 PLS 8895
61	26773297.6409	753952.3328		HV1
62	26773410.5157	754934.0971		HV2
64	26773111.6508	756966.9386		WELL MON. BRASSCAP W 1/4 SEC. 27/26 PLS 6895
65	26773147.8961	751769.4290		WELL MON. BRASS CAP SEC. 28/27
66	26770461.5558	751799.8420		WELL MON. BRASS CAP SEC. COR. 28/27/33/34
67	26769783.5587	754441.4588		CONCRETE MONUMENT
923	26765052.8396	747567.0135		CC GIS923

- LEGEND
- FOUND MONUMENT - SEE ABOVE RIGHT FOR DESCRIPTION
 - RE-ESTABLISHED POINT
 - △ HORIZONTAL CONTROL PANELS
 - (R) RADIAL
 - (M) MEASURED

COMBINED SCALE FACTOR CONVERSION

0.99982303132



VERTICAL DATUM:

RIVET AND PLATE IN TOP OF CURB @ NW CORNER OF TENAYA AND WESTCLIFF
 CLV BM # 0LV00 2754 ELEV. 742.7473 (M) 2,436.83 (US SURVEY FEET)

BASIS OF BEARINGS

BEARINGS FOR THIS MAP WERE DERIVED FROM NEVADA STATE PLANE COORDINATES, NAD 83/94 (HARN) DATUM, EAST ZONE (2701), USING LOCAL CONTROL POINTS: CLARK COUNTY GIS CONTROL POINTS #923 AND #50 AS FIXED, BEARING SOUTH 53°06'53" WEST.

NO.	DATE	DESCRIPTION	APP'D.

DEPARTMENT OF PUBLIC WORKS
 ENGINEERING DESIGN SECTION
 CITY ENGINEER: CHARLES KAJKOWSKI JR., P.E.
 PROJECT MANAGER: [Signature]
 DESIGNED BY: RDC
 DRAWN BY: DMF
 CHECKED BY: DMF
 HORIZONTAL SCALE: 1"=200'
 VERTICAL SCALE: [Symbol]
 DATE: 1/2008

TITLE: TENAYA OVERPASS
 SHEET: HORIZONTAL CONTROL PLAN

Sheet
 S-01
 3 of 96
 DRAWING NO.

109446