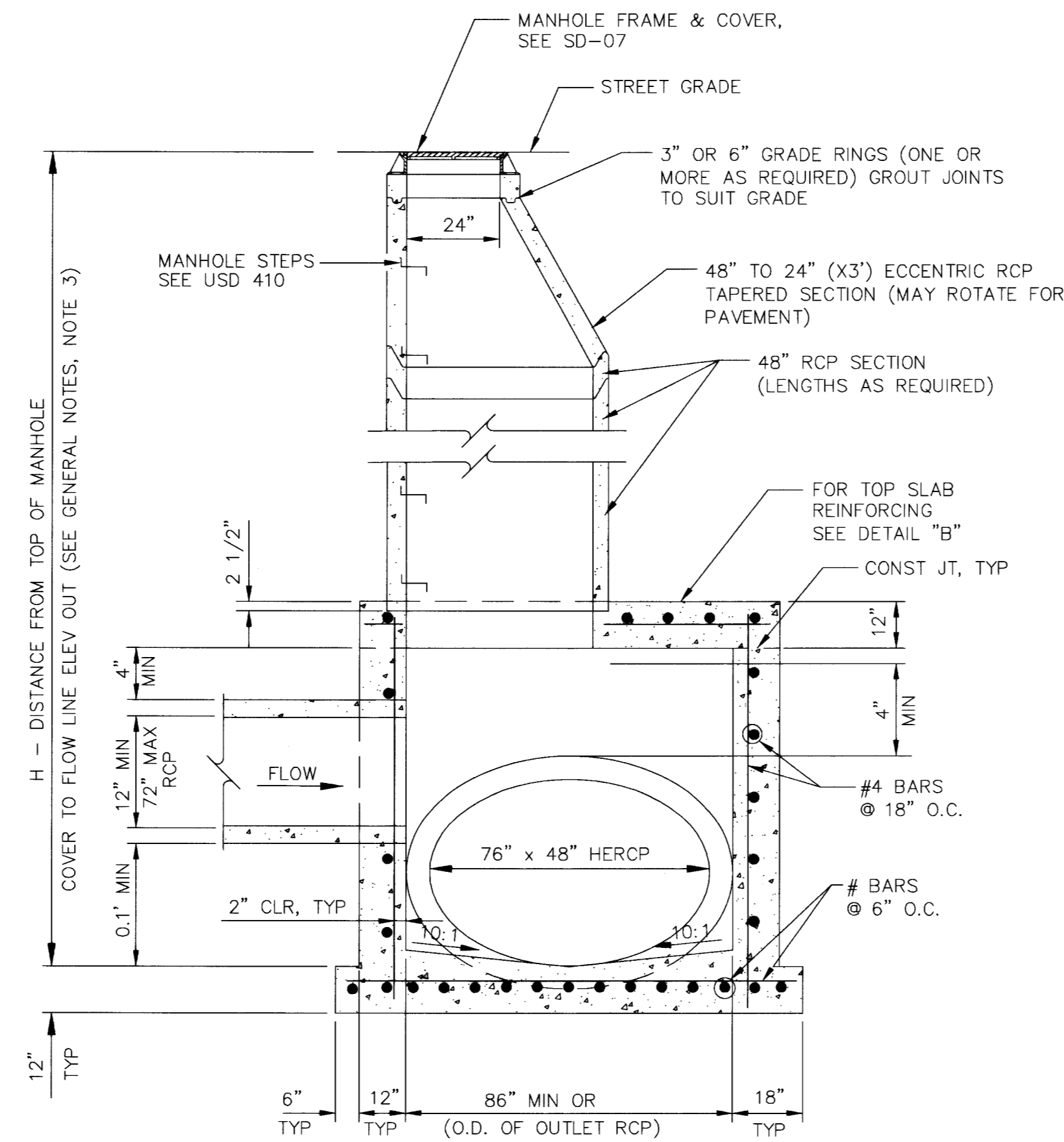
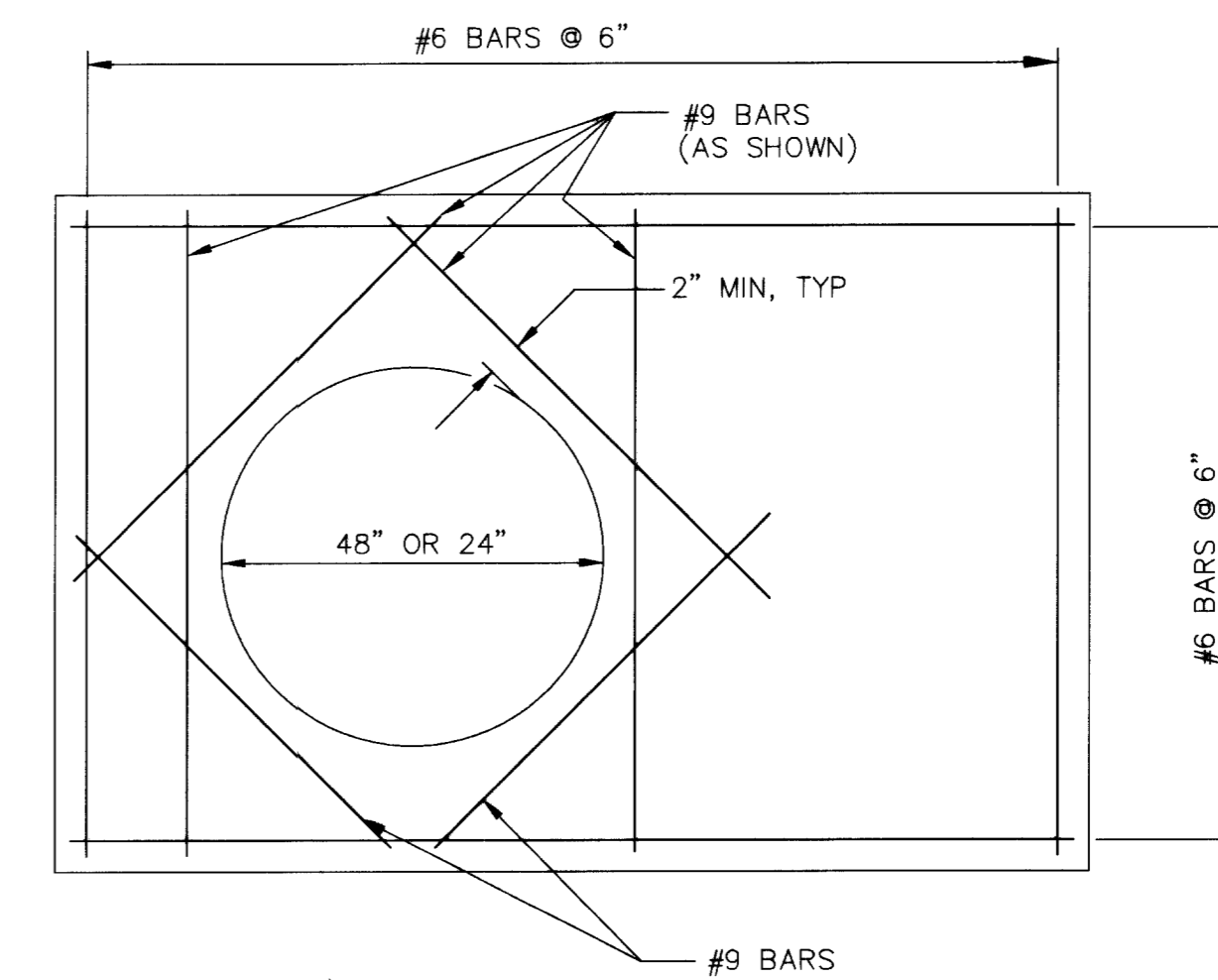


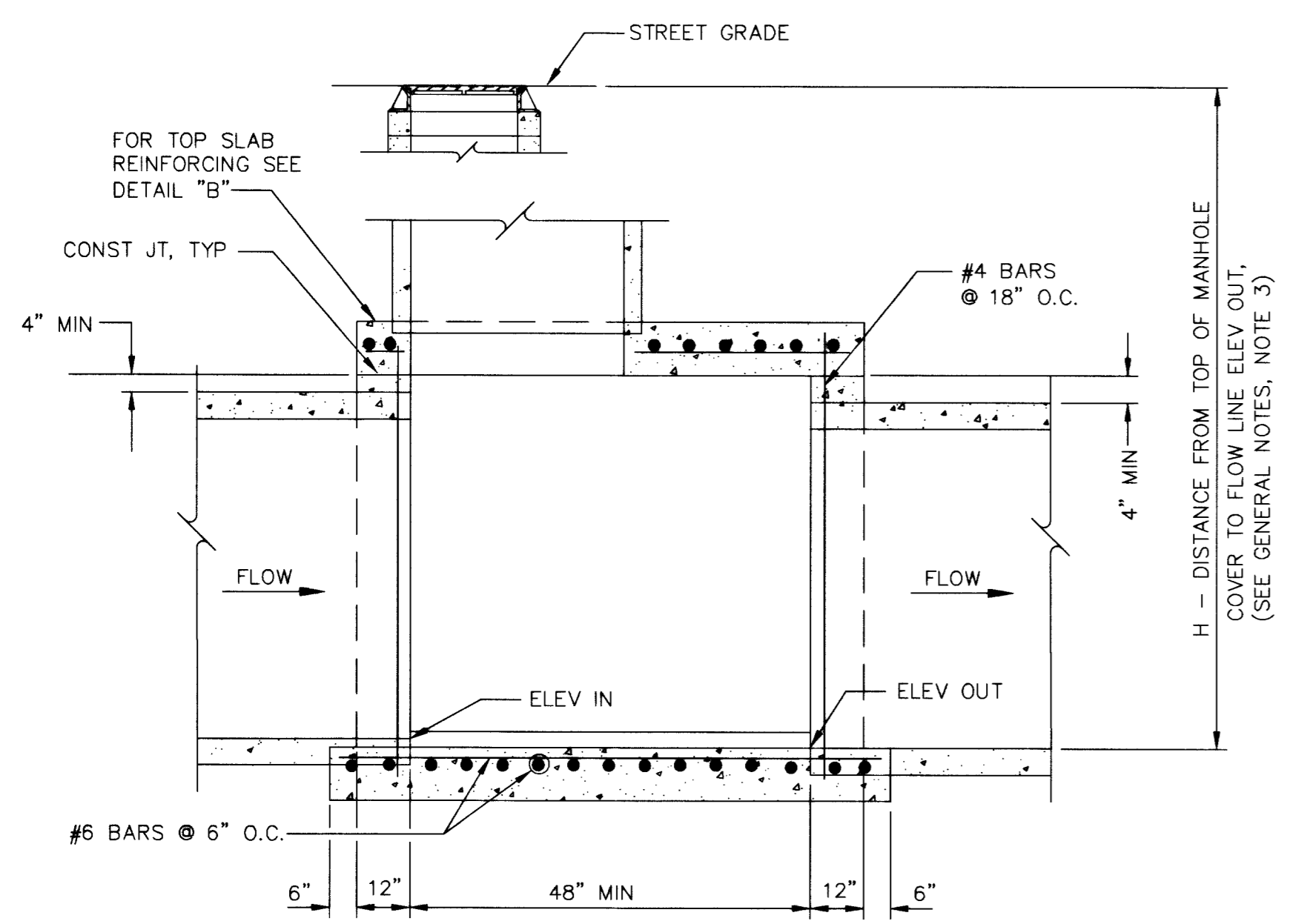
PLAN



SECTION A-A  
(FOR VARIABLE HEIGHT SITUATIONS)



DETAIL "B"  
(TOP SLAB REINFORCING)



SECTION B-B

GENERAL NOTES:

1. ALL CONCRETE SHALL BE CLASS A OR CLASS AA.
2. MANHOLES WITH MORE THAN ONE PIPE: THE INFLOW PIPE INVERT ELEVATIONS SHALL BE GREATER THAN OR EQUAL TO 0.1' ABOVE THE OUTFLOW PIPE INVERT ELEVATION.
3. FOR VALUES OF "H", SEE PLANS. "H" IS THE DIFFERENCE IN ELEVATION BETWEEN THE OUTFLOW PIPE INVERT ELEVATION AND THE TOP OF MANHOLE ELEVATION AT STREET GRADE.
4. PRECAST CONCRETE PIPE SECTIONS, TAPERED SECTIONS, LIDS, GRADE RINGS, AND STEPS SHALL CONFORM TO AASHTO M 199 (ASTM C-478).
5. MANHOLE COVER SHALL BEAR ENTITY IDENTIFICATION AND SYSTEM FUNCTION (IF APPLICABLE).
6. SHAPE FLOWLINE IN MANHOLE TO OUTLET PIPE, AND PROVIDE A 10:1 MINIMUM SLOPE FROM ALL DIRECTIONS TOWARD FLOW LINE.

MODIFIED NDOT TYPE 4 MANHOLE DETAIL 1

N.T.S. (PER NDOT STANDARD R-4.7.2)

NO.	DATE	DESCRIPTION	APP'D

DEPARTMENT OF PUBLIC WORKS  
ENGINEERING DESIGN SECTION

CITY ENGINEER: JORGE CERVANTES, P.E.  
PROGRAM MANAGER: MARK SORENSEN, P.E.  
DESIGNED BY: RAP  
DRAWN BY: KLI  
CHECKED BY: RSM  
HDR Engineering, Inc.  
DATE: 10/2007



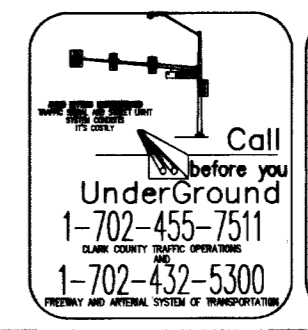
TENAYA WAY OVERPASS  
AT SUMMERLIN PKWY

MODIFIED NDOT MANHOLE DETAIL

TITLE: SHEET: 29 of 96



Sheet SD-13  
29 of 96  
DRAWING NO. 1074452



P:\Tenaya\Sheets\SD-013.dwg 10/18/07 3:42pm abdo

109472