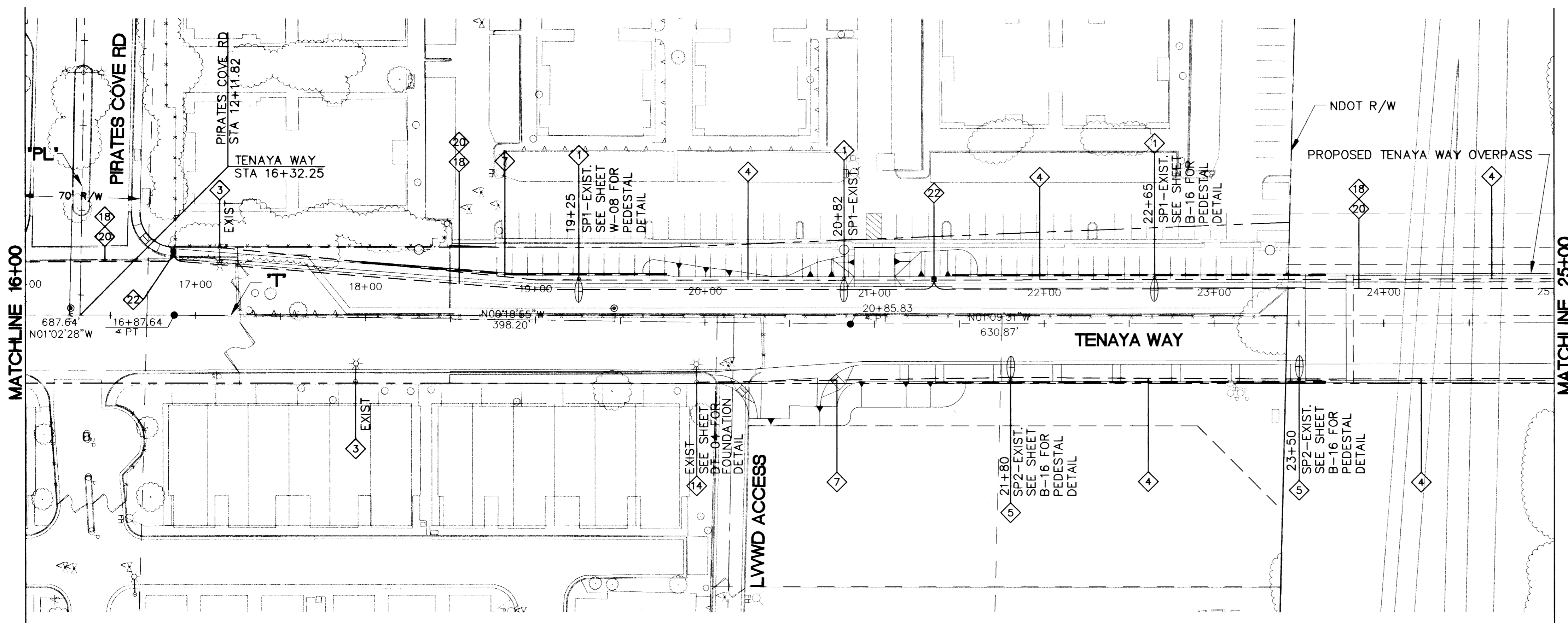


- ### LIGHTING NOTES
- 11-GAUGE STREETLIGHT ASSEMBLY WITH 250-WATT HPS LUMINAIRE AND 8' ARM, PER USGCCA NO. 314 EXISTING NPCo TRANSFORMER
  - EXISTING TO REMAIN
  - 2-#4, 1-#8 IN 2-INCH CONDUIT
  - 7-GAUGE STREETLIGHT ASSEMBLY WITH 250-WATT HPS LUMINAIRE AND 18' ARM, PER USGCCA NO. 316 CONNECT TO EXISTING CONDUIT STUB OUT.
  - 1-#8 IN 2-INCH CONDUIT
  - CONNECT TO EXIST STREET LIGHT CIRCUIT.
  - NOT USED
  - EXISTING PULL BOX
  - EXISTING SERVICE POINT
  - REMOVE EXISTING PULL BOX AND REPLACE WITH TYPE 100 SPLICE VAULT PULL BOX.
  - REMOVE EXISTING STREETLIGHT ASSEMBLY AND REMOVE FOUNDATION TO 18" BELOW FINISH GRADE. INSTALL NO. 3 1/2 PB AND MAINTAIN CIRCUIT.
  - REMOVE & REPLACE EXISTING STREETLIGHT ASSEMBLY AND FOUNDATION TO PROPOSED GRADE. SALVAGE STREETLIGHT ASSEMBLY
  - TO NPCo. POINT OF CONNECTION. SEE NPCo. DRAWINGS FOR ADDITIONAL REQUIREMENTS.
  - SEE TRAFFIC SIGNAL SHEETS, PULL BOXES AND CONDUIT SHOWN ON "TS" SHEETS.
  - 72 STRAND FIBER OPTIC CABLE
  - GATOR PATCH CABLE.
  - 3-INCH CONDUIT WITH #8 (INTERCONNECT)
  - TYPE 100 PULL BOX (INTERCONNECT)
  - TYPE P30 PULL BOX (INTERCONNECT)
  - FIBER OPTIC SPLICE
  - INSTALL FIBER OPTIC TRANSCEIVER IN EXISTING CABINET
  - INSTALL FIBER OPTIC TRANSCEIVER IN NEW CABINET. SEE SHEET TS-03. (NO DIRECT PAYMENT)



- ### GENERAL NOTES
1. ALL WORK SHALL BE IN ACCORDANCE WITH UNIFORM STANDARD DRAWINGS CLARK COUNTY AREA.
  2. ALL STREET LIGHTING CONDUIT IS 2" CONDUIT, 2-#4, 1-#8 UNLESS NOTED OTHERWISE.
  3. ALL STREETLIGHT ASSEMBLIES ARE 250 W HIGH PRESSURE SODIUM UNLESS NOTED OTHERWISE.
  4. ALL RESETTING OF EXISTING STREETLIGHT ASSEMBLY REQUIRE NEW FOUNDATION TO NEW SIDEWALK ELEVATION.

NO.	DATE	DESCRIPTION

**DEPARTMENT OF PUBLIC WORKS**  
**ENGINEERING DESIGN SECTION**

CITY ENGINEER: JORGE CERVAJES, P.E.  
PROGRAM MANAGER: MARK SORENSEN, P.E.

DESIGNED BY: RSM  
DRAWN BY: ESM  
CHECKED BY: PSP

**HDR**  
HDR Engineering, Inc.

HORIZONTAL SCALE: 1"=40'  
VERTICAL SCALE: 1"=4'  
DATE: 1/2/08

**TENAYA WAY OVERPASS**  
**AT SUMMERLIN PKWY**

**LIGHTING PLANS**  
**STA 10+00 TO STA 25+00**

TITLE: \_\_\_\_\_ SHEET: \_\_\_\_\_

Sheet **LT-01**  
38 of 96  
DRAWING NO. **107Y4452**

Call before you Dig  
1-702-455-7511  
1-702-432-5300

Call before you Overhead  
1-800-227-2600

Call before you Dig  
1-702-593-6111