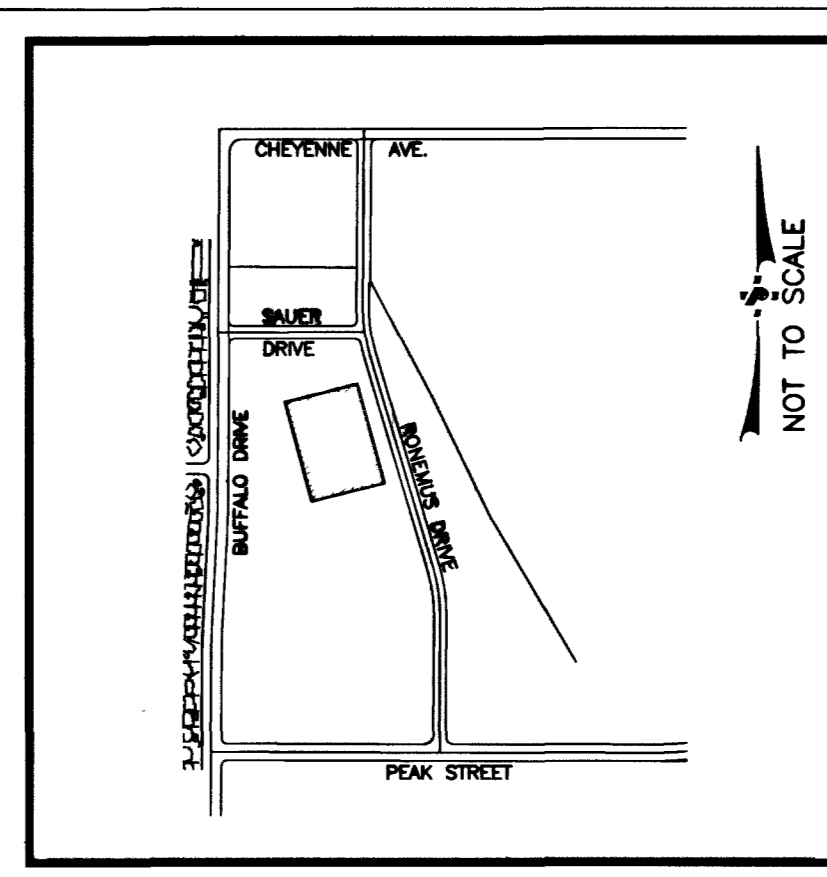


VIC MAP



WATER NOTES

- 1 INSTALL 8" 45" ELL
- 2 INSTALL 8" 90" ELL
- 3 INSTALL FIRE HYDRANT ASSEMBLY PER IN ACCORDANCE WITH UDACS PLATE No. 7 (CLOW OR MUELLER)
- 4 INSTALL 8"x8"x2" TEE
- 5 INSTALL 8"x8"x6" TEE
- 6 NOT USED
- 7 INSTALL PV
- 8 INSTALL 2" 90" ELL
- 9 INSTALL FDC

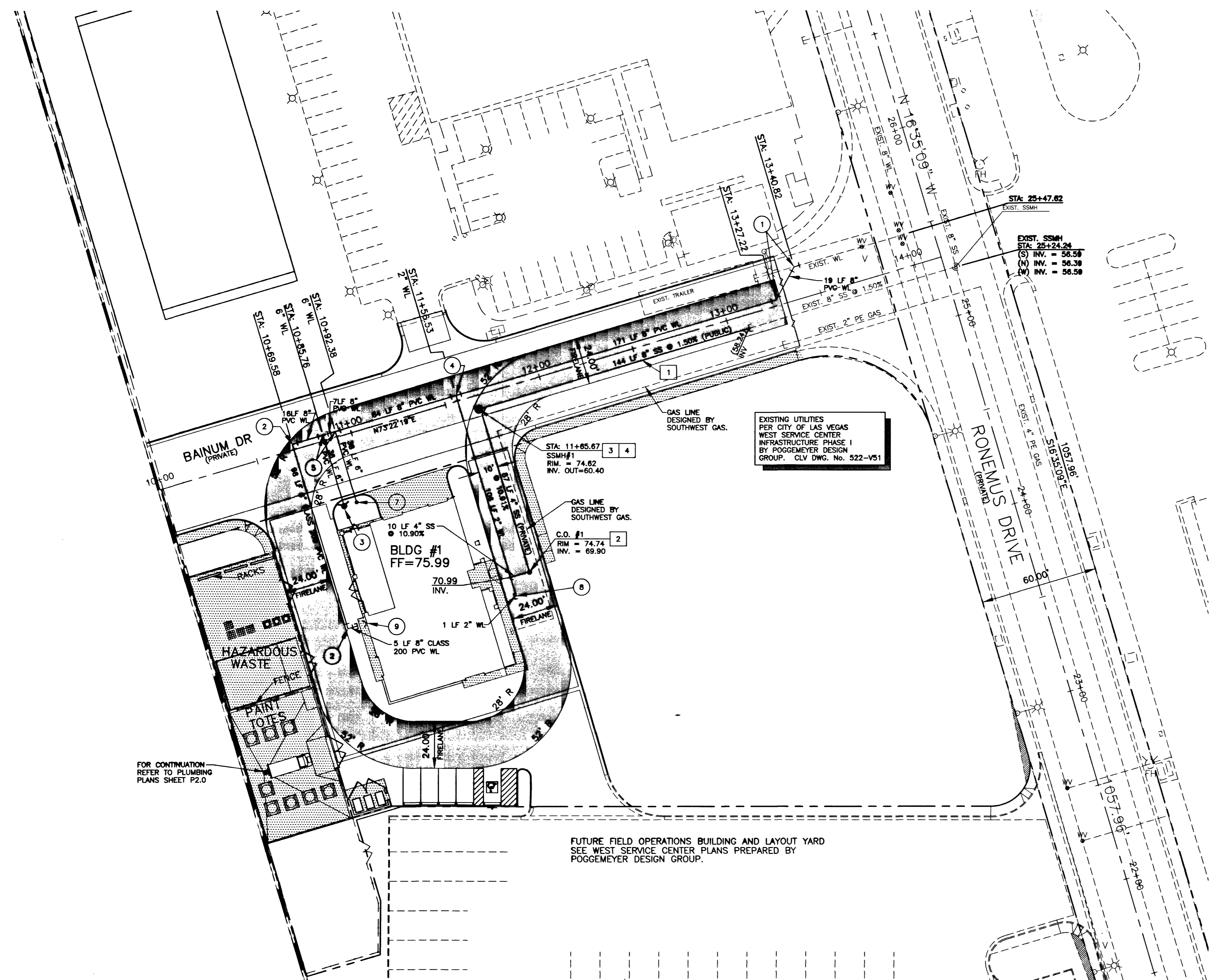
SEWER NOTES

- 1 CONSTRUCT 8" PVC SDR 35 SANITARY SEWER LINE IN ACCORDANCE WITH DCSWCS SD-16A AND USD # 503
- 2 CONSTRUCT 6" CLEAN OUT IN ACCORDANCE WITH DETAIL
- 3 INSTALL 48" ECCENTRIC MANHOLE IN ACCORDANCE WITH DCSWCS DWG SD-1
- 4 INSTALL WYE TO CONNECT TO 8" SS

FIRE FLOW CALCULATIONS

FIRE FLOW REQUIREMENTS IS 1500 GALLONS PER MINUTE AT 20 PSI RESIDUAL PRESSURE.

BASED ON:
 SQUARE FOOTAGE: 4,838 SQUARE FEET
 LARGEST AREA BETWEEN 4-HOUR: 4,838 SQUARE FEET
 AREA SEPARATION WALLS: 22'-1" 1/2 FEET
 BUILDING HEIGHT: 1 FLOORS
 NUMBER OF STORIES: 1 FLOORS
 TYPE OF CONSTRUCTION: VN
 OCCUPANCY: COMMERCIAL
 FULL AUTOMATIC FIRE SYSTEM: YES NO
 REVIEWED BY: R. Wick DATE: 6/9/03
 LAS VEGAS FIRE DEPT.
 11/9-03



EXISTING UTILITIES PER CITY OF LAS VEGAS WEST SERVICE CENTER INFRASTRUCTURE PHASE I BY POGGEMEYER DESIGN GROUP. CLV DWG. No. 522-V51

WATER QUANTITIES (PRIVATE)

8" PVC WL	380 LF
6" PVC WL	76 LF
2" PVC WL	109 LF
8" 45" ELL	2 EA
8" 90" ELL	2 EA
8"x2"x8" TEE	1 EA
8"x6"x8" TEE	2 EA
2" 90" ELL	1 EA

SEWER QUANTITIES (PRIVATE)

4" SS	96 LF
CLEAN OUT	1 EA

SEWER QUANTITIES (PUBLIC)

8" SS	144 LF
48" SSMH	1 EA

SEWER CONTRIBUTIONS

BASED ON:
 SQUARE FOOTAGE: 5,340 TOTAL SQUARE FEET
 OCCUPANCY: COMMERCIAL
 COMMERCIAL FLOW RATE = 0.10 GALLONS PER SQUARE FOOT PER DAY
 AVG. 534
 TOTAL CONTRIBUTION PEAK 668 GALLONS PER DAY

UTILITY NOTE:

UTILITY LOCATIONS SHOWN HEREON ARE APPROXIMATE ONLY. IT SHALL BE THE CONTRACTORS RESPONSIBILITY TO DETERMINE THE EXACT VERTICAL AND HORIZONTAL LOCATION OF ALL EXISTING UNDERGROUND UTILITIES PRIOR TO COMMENCING CONSTRUCTION. NO REPRESENTATION IS MADE THAT ALL EXISTING UTILITIES ARE SHOWN HEREON. THE ENGINEER ASSUMES NO RESPONSIBILITY FOR UTILITIES NOT SHOWN OR UTILITIES NOT SHOWN IN THEIR PROPER LOCATION.

BENCHMARK

CURRENTLY KNOWN AS RIVET AND PLATE IN TOP OF CURB SOUTH SIDE OF CHEYENNE & +/- 600 FT WEST OF TENAYA, ELEV. 2335.78' (NAVD88)

BASIS OF BEARING

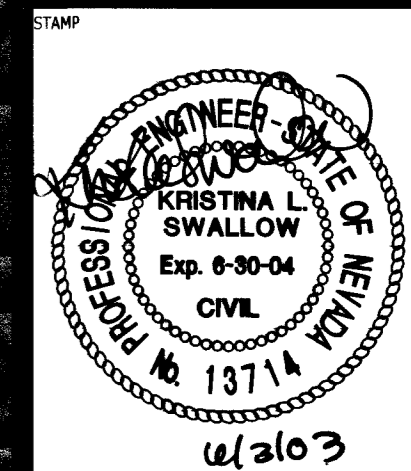
PORTION OF CENTERLINE OF BUFFALO DRIVE, BEARS N00°20'23"E, BEING THE WEST LINE THE NORTHEAST QUARTER (NW 1/4) OF THE NORTHWEST QUARTER (NW 1/4) OF SECTION 15, TOWNSHIP 20 SOUTH, RANGE 60 EAST, M.D.M., CLARK COUNTY NEVADA, AS SHOWN ON THE PARCEL MAP RECORDED IN FILE 50 OF PARCELS, PAGE 41, CLARK COUNTY, NEVADA, RECORDERS.



REVISIONS
 5 R. FT. + BLDG. HT.
 REVISED
 11/9-03
 HE 09-16-03

poggemeyer
 design group, inc.
 engineers • planners • surveyors • landscape architects
 200 North Rampart Way • Las Vegas, NV 89102 • (702) 229-5335

TRAFFIC ENGINEERING and FIELD OPERATIONS
 WEST SATELLITE FACILITY
 CITY OF LAS VEGAS, NEVADA
 UTILITY PLAN



OWNER: CITY OF LAS VEGAS
 DEPARTMENT OF PUBLIC WORKS
 ARCHITECTURAL SERVICES

DRAWN	EGF
FILE	03.15341.04
DATE	06/09/03
SCALE	1" = 30'
REV NO	03.15341.04
CLV DWG NO	521-273
CLV JOB NO	2002013.00
SHEET NAME	C5.01

Call before you Dig.
 1-702-583-6111
 NEVADA PUBLIC UTILITIES SAFETY SERVICES DEPARTMENT
 1-800-227-2000