

CONSTRUCTION NOTES

- ① CONSTRUCT 48" DIA. SANITARY SEWER MANHOLE PER DCSWW STD DWG. NO. SD-1
- ② CONSTRUCT 8" PVC SANITARY SEWER
- ③ CONSTRUCT 8" PVC SANITARY SEWER STUB AND PLUG
- ④ PROVIDE A CUSHION OF CEMENT SLURRY PER DCSWW STD 2.2.22
- ⑤ CONNECT NEW 8" SEWER TO EXISTING WITH CLEANOUT

GENERAL NOTES

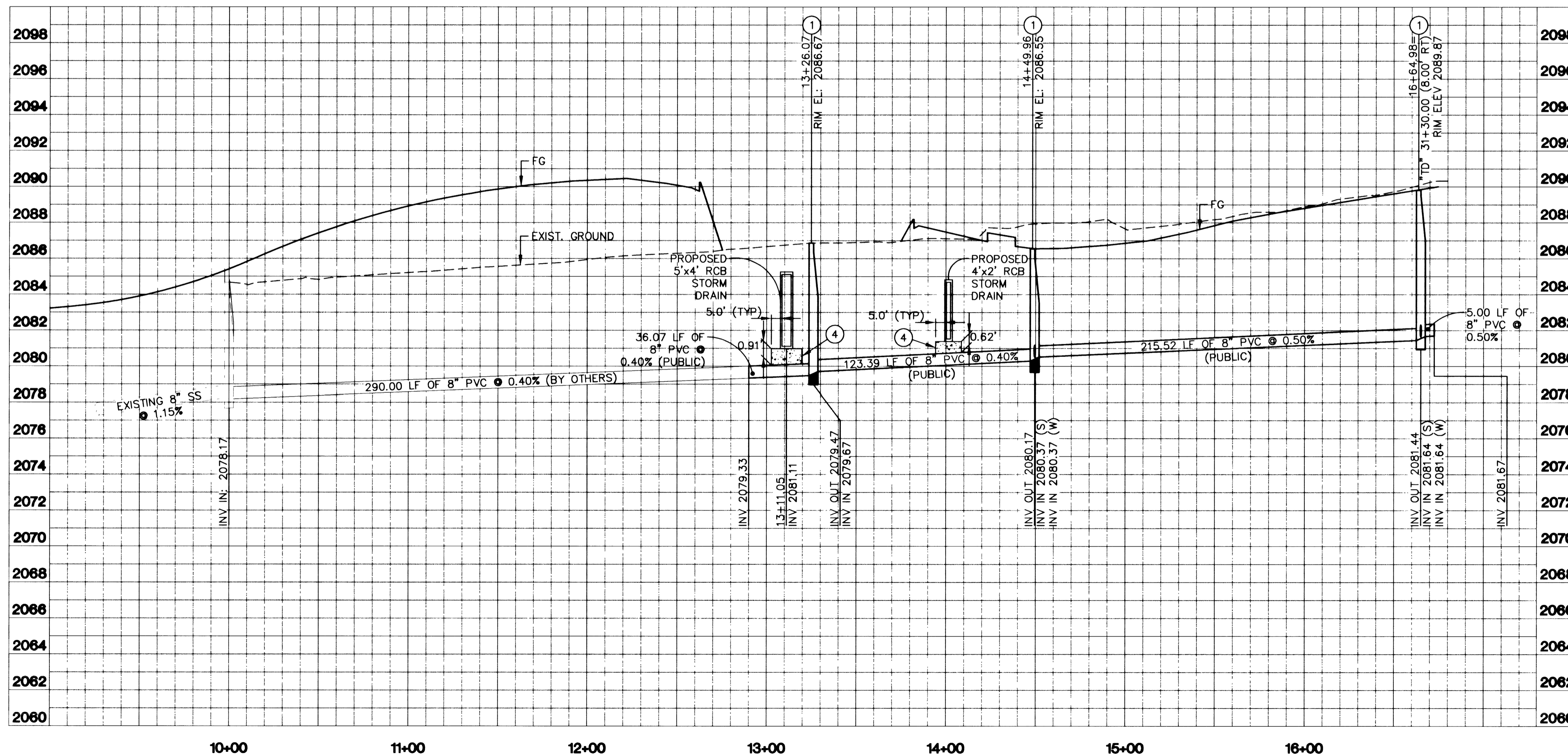
- 1. CONTRACTOR SHALL VERIFY ALL EXISTING UTILITIES LOCATIONS AND ELEVATIONS PRIOR TO ANY CONSTRUCTION
- 2. DIMENSION TO BACK OF CURB UNLESS OTHERWISE NOTED

BASIS OF BEARING

BEING THE NORTH LINE OF THE NORTHEAST QUARTER (NE 1/4) OF THE NORTHEAST QUARTER OF SECTION 8, TOWNSHIP 21 SOUTH, RANGE 61 EAST, M.D.M., SAID LINE ALSO BEING THE CENTERLINE OF SAHARA AVENUE. BEARING: SOUTH 89°59'39" WEST.

BENCHMARK

CLARK COUNTY BENCHMARK NO. 25 RIVET AND SQUARE ALUMINUM PLATE IN TOP OF CURB, NORTHEAST CORNER OF SAHARA AVENUE AND RANCHO DRIVE NEAR THE PC OF SAHARA AVENUE. ELEVATION: 2075.74 ft. (632.686 meters) REFERENCE No. 7C11 4SW5 DATUM: NAVD 88



SAFETY ALERT
 Call Before You Overhead
 1-702-593-6111

Avoid cutting underground utility lines. It's costly.
Call before you Dig
 1-800-227-2600

STATION CASINOS

1303 N. SUNSET ROAD
 HENDERSON, NEVADA 89014
 (702) 898-4278 Fax (702) 898-4283

Kimley-Horn and Associates, Inc.
 Engineering, Planning, and Environmental Consultants

1050 East Flamingo Road
 Suite 5-210
 Las Vegas, Nevada 89119
 Fax No. (702) 735-4949

**UTILITY PLAN
 8" SANITARY SEWER**

**TEDDY DRIVE
 ROADWAY IMPROVEMENTS**

DRAWN BY:	TEA	3/01
DESIGNED BY:	COC	3/01
CHECKED BY:	BRB	3/01
PROJECT NO.:	092045008	SCALE: AS NOTED

SHEET
UT-2
 17 OF 21 SHEETS
 DRAWING NO.
107-V 34/14