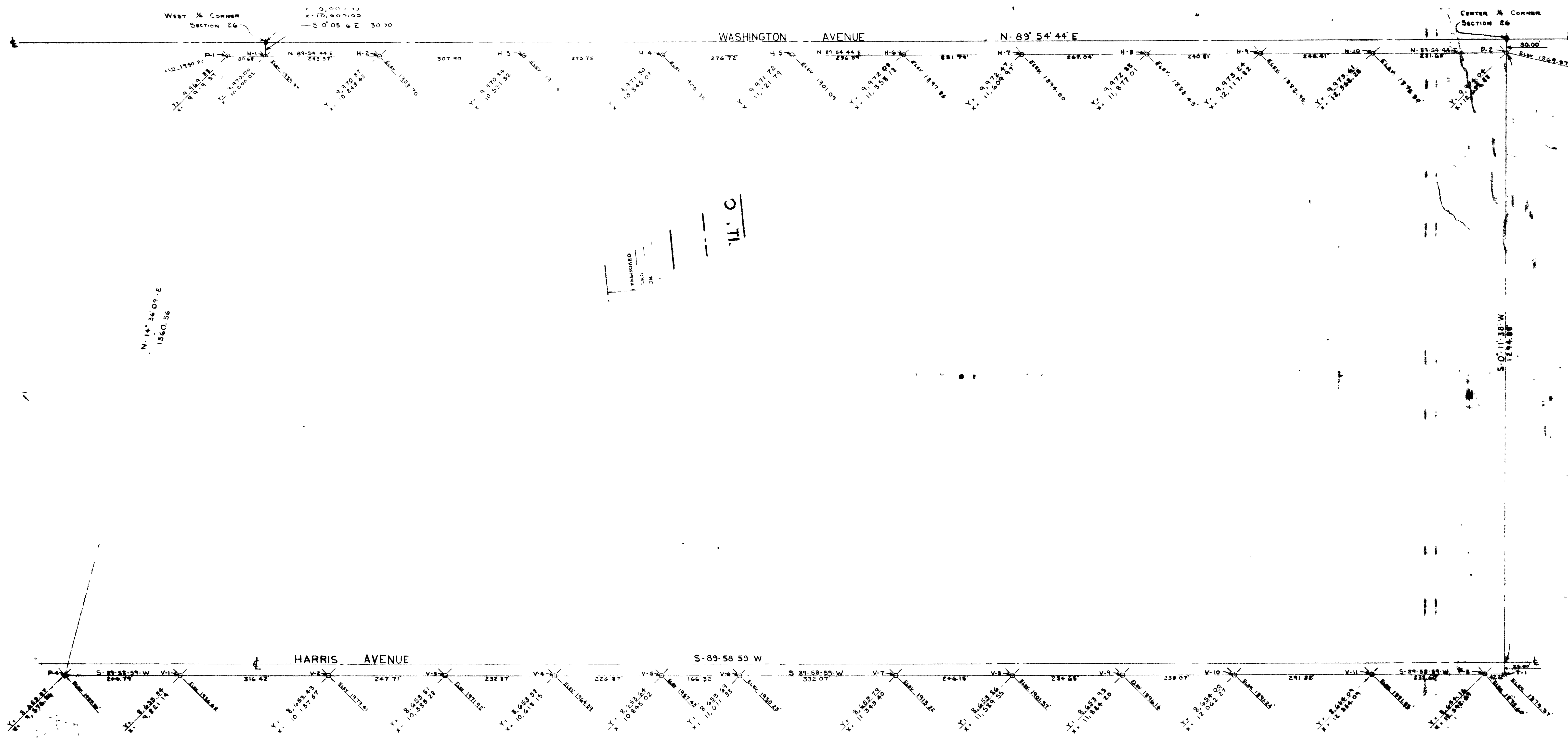


15-13-58



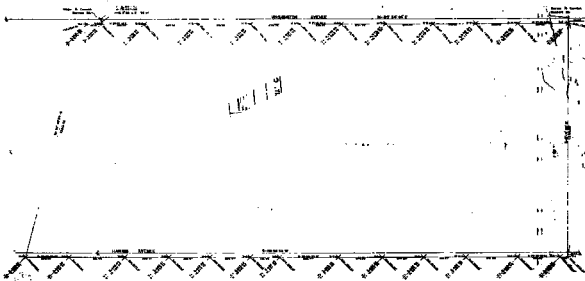
N-14°36'01\"/>

11' C
 WASHINGTON
 NE
 SW

BASIS OF CO-ORDINATES
 West Quarter (WA) Corner Section 26 Township 20 South, Range 61 East
 Assumed coordinates Y = 10,000.00 X = 10,000.00

BASIS OF BEARING
 S89°54'44\"/>

CITY OF LAS VEGAS NEVADA		
ENGINEERING DEPT.		
SURVEY OF B.P.O.E. ELKS LODGE PROPERTY		
NO. WO 936	DATE	SCALE 1" = 100'
BY K. ANDERSON	8-7-65	F.W.C. NO.
APP. K. ANDERSON	8-10-65	P.L.O. NO.
APPROVED BY CITY ENGINEER		DRAWING NO.
		15-13-58



SHEET OF CONDITIONS
 The undersigned, *George H. Smith, Jr.*, being of the County of *Clark*, State of *Nevada*, do hereby certify that the above is a true and correct copy of the original as the same appears on file in my office.

SHEET OF EXPLANATION
 The undersigned, *George H. Smith, Jr.*, being of the County of *Clark*, State of *Nevada*, do hereby certify that the above is a true and correct copy of the original as the same appears on file in my office.

CITY OF LAS VEGAS NEVADA	
ENGINEERING DEPT.	
PROJECT NO. <i>1000</i>	DATE <i>10/1/50</i>
BY <i>G.H.S.</i>	CHECKED <i>G.H.S.</i>
SCALE <i>1" = 100'</i>	APPROVED <i>G.H.S.</i>