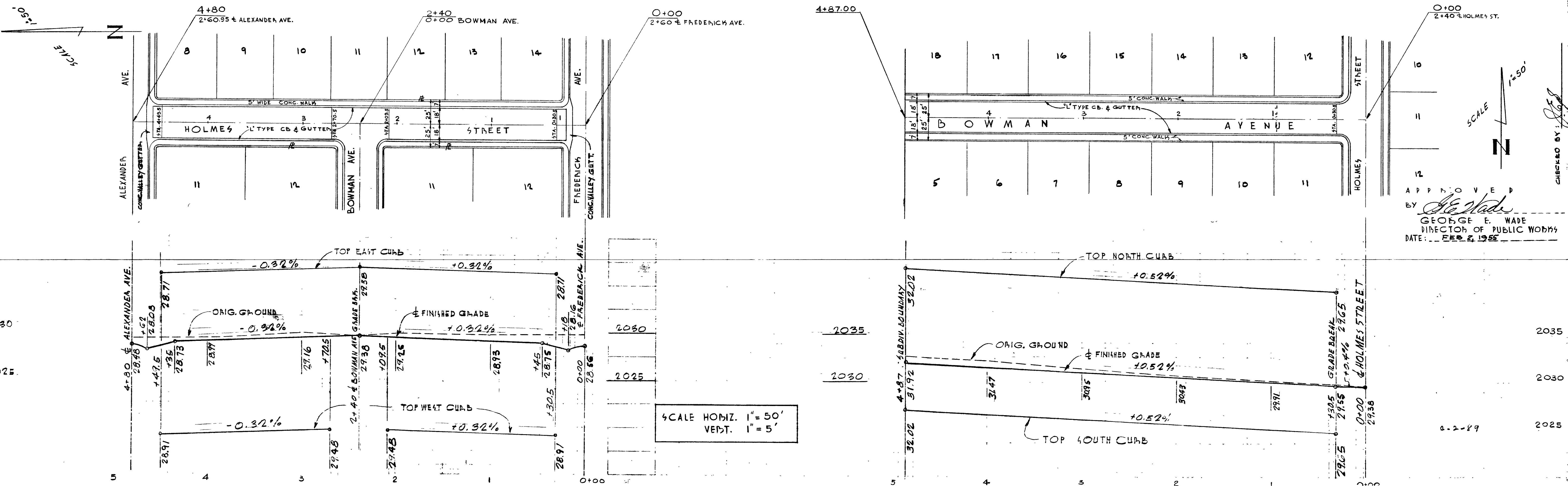


Approval of this plan by the City of Las Vegas, Nevada, does not relieve the Subdivider of responsibility for errors, in calculation, design, or planning by the Subdivider's, Engineer or Surveyor.



APPROVED BY *George E. Wade*  
 GEORGE E. WADE  
 DIRECTOR OF PUBLIC WORKS  
 DATE: FEB 2 1985

SCALE HORIZ. 1" = 50'  
 VERT. 1" = 5'

D' STREET, HOLMES STREET & BOWMAN AVENUE  
 SUNSET MANOR  
 107Y-3020-1  
 5312 21.8.76 W.O. 904

