

QUANTITY ESTIMATES (PRIVATE)

2" ASPHALTIC CONCRETE PAVEMENT	6,322 S.Y.
30" ROLL-TYPE CURB & GUTTER	2855 L.F.
ISLAND CURB	181 L.F.
6" CONCRETE	9444 S.F.
VALLEY GUTTER	1268 S.F.

GRADING NOTES

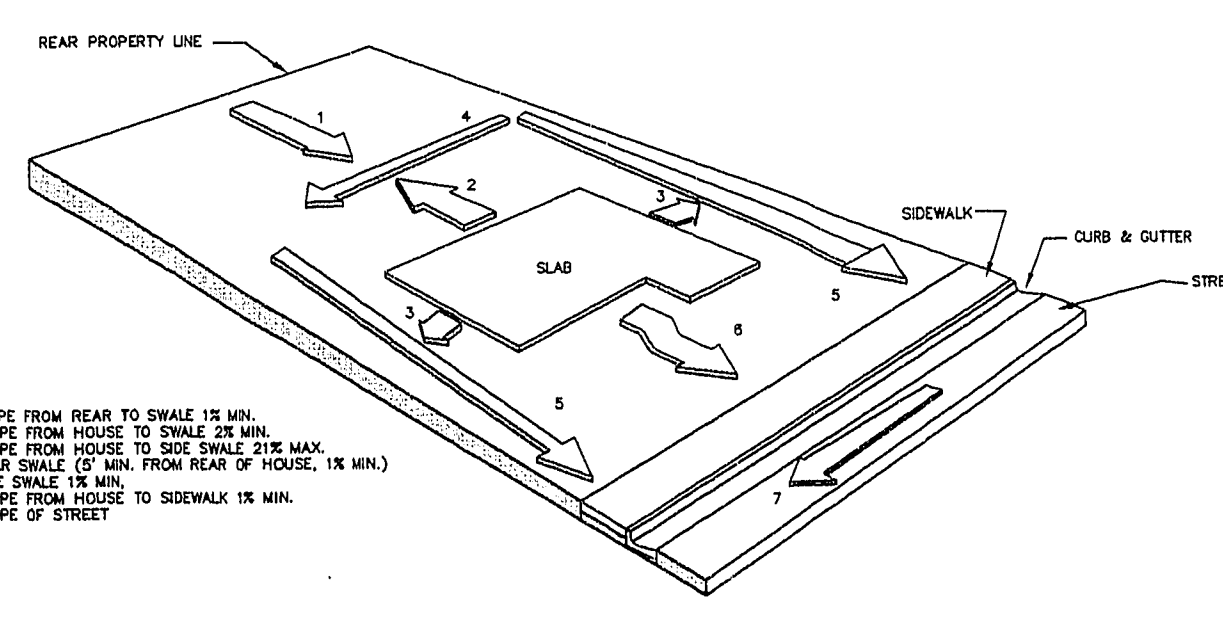
- ALL GRADES SHOWN ARE 3 FEET BELOW FINISH GRADE TO ALLOW FOR LANDSCAPING; EXCEPT TC, FL, AND FG, WHICH ARE TO FINISH GRADE.
- FINAL GRADES ADJACENT TO STRUCTURE AFTER LANDSCAPING SHALL BE 0.7 FEET BELOW FINISH GRADE.
- THE QUANTITIES SHOWN ARE ESTIMATES ONLY AND ARE NOT TO BE USED FOR BIDDING PURPOSES.
- THE CONTRACTOR SHALL VERIFY ALL CONDITIONS AND DIMENSIONS AND REPORT ALL DISCREPANCIES TO THE ENGINEER BEFORE BEGINNING WORK.
- FINISH FLOOR ELEVATION IS TO BE 1.0 FOOT ABOVE PAD GRADE.
- ALL LOTS ARE TO BE F.H.A. TYPE "A" DRAINAGE.
- ALL IMPROVEMENTS TO BE PROTECTED FROM EROSION.
- ALL SLOPES ARE TO BE TWO FEET HORIZONTAL TO ONE FOOT VERTICAL UNLESS OTHERWISE NOTED.
- SEE FINAL MAP FOR EXACT BEARINGS AND DISTANCES.
- SEE DETAIL SHEETS FOR STREET SECTIONS AND DETAILS.

BACK OF CURB DATA TABLE

No.	RADIUS	DELTA	LENGTH	TANGENT
C1	50.00'	52°31'40"	45.84'	24.87'
C2	50.00'	66°29'43"	58.03'	32.78'
C3	50.00'	33°09'38"	29.23'	15.05'
C4	50.00'	33°09'04"	28.87'	14.85'
C5	50.00'	62°24'47"	54.47'	30.29'
C6	50.00'	55°59'48"	48.87'	26.58'
C7	25.00'	84°24'27"	36.83'	22.87'
C8	20.00'	90°21'51"	31.54'	20.13'
C9	20.00'	89°38'09"	31.29'	19.87'
C10	20.00'	31°00'10"	10.82'	5.85'
C11	50.00'	51°12'08"	44.68'	23.96'
C12	50.00'	62°07'53"	54.22'	30.12'
C13	50.00'	36°18'27"	33.43'	17.37'
C14	25.00'	80°30'41"	39.48'	25.22'
C15	25.00'	89°28'19"	39.05'	24.78'
C16	20.00'	83°09'26"	29.03'	17.74'
C17	20.00'	90°00'00"	31.42'	20.00'
C18	20.00'	85°28'19"	31.24'	19.82'

LEGEND

- EXISTING IMPROVEMENTS
- PROPOSED BLOCK RETAINING WALL
- PROPOSED BLOCK WALL
- EXIST. BLOCK WALL
- INDEX CONTOUR
- INTERMEDIATE CONTOUR
- SCARP
- SWALE
- SETBACK LINE
- LOT NUMBER
- BLOCK NUMBER
- FG FINISH GRADE
- FL FLOW LINE
- TC TOP OF CURB
- PAD GRADE



F.H.A. TYPE "A" DRAINAGE PERSPECTIVE

I CERTIFY THAT THIS GRADING PLAN IS IN CONFORMANCE WITH THE APPROVED DRAINAGE STUDY ON FILE AT THE CITY OF LAS VEGAS FOR THIS PROJECT.

GRADING PLAN TO BE IN CONFORMANCE TO THE APPROVED FLOOD STUDY.

BENCHMARK

CITY OF LAS VEGAS BENCHMARK NO. 1LV00-4SE66
RIVIT & PLATE IN TOP OF CURB, SW RETURN OF HICKHAM & BUFFALO.
ELEVATION = 2345.224 (NAVD88 DATUM)

NOTE:
CONTRACTOR MUST HAVE A CLARK COUNTY PERMIT FOR ANY WORK DONE IN COUNTY R/W.

NOTICE!

EXISTING UTILITIES ARE SHOWN ON PLANS FOR THE CONVEYANCE OF THE CONTRACTOR ONLY. THE CONTRACTOR IS RESPONSIBLE FOR VERIFYING THE LOCATION OF ALL UTILITIES. THE CONTRACTOR SHALL BE RESPONSIBLE FOR UTILITIES NOT SHOWN OR SHOWN INCORRECTLY.

Call Djs BEFORE YOU

1-800-227-2800
LAS VEGAS, NV 89102

REVISIONS: 1-17-96 REV. 2-11-97 REV. 3-19-97

DATE: 1-17-96
BY: [Signature]

PROJECT: SUNSET ESTATES

TITLE: ROUGH GRADING PLAN

JOB # N5-86-05

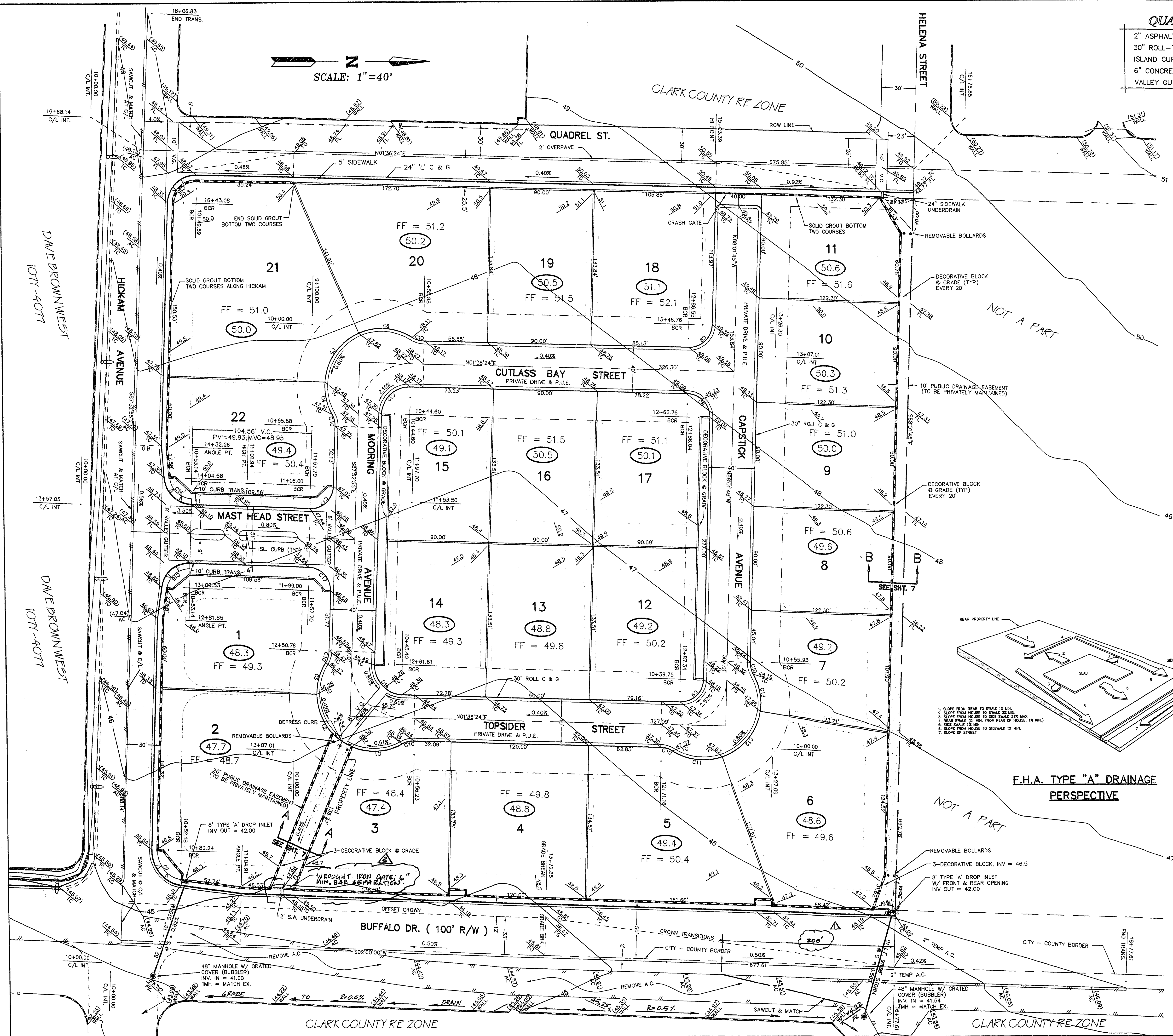
NAME: VERTREES/MRA

DATE: 9-7-95

SCALE: 1" = 40'

PAGE: 2

86050P.DWG OF 7



11-25-71 107Y-4423