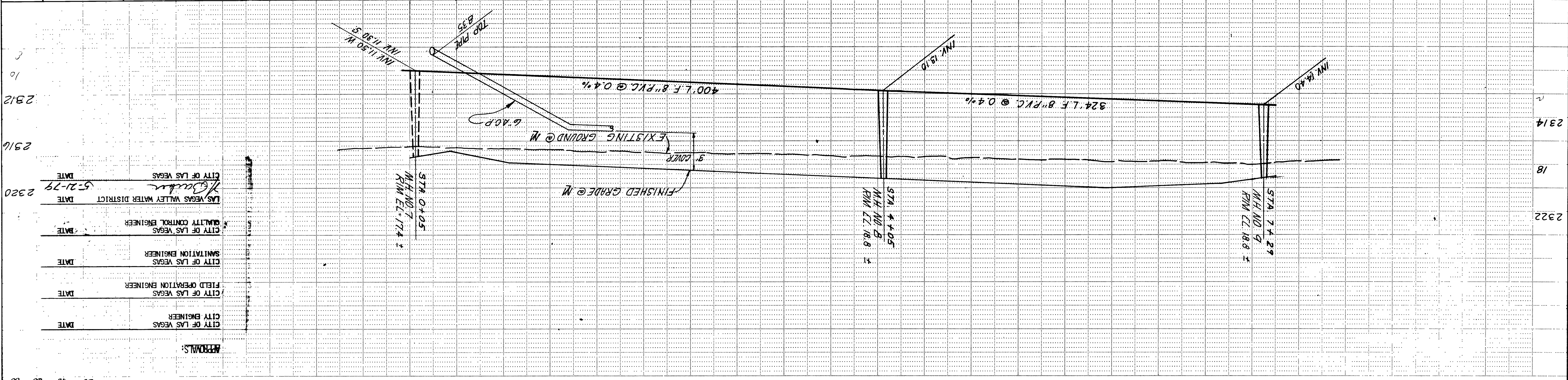


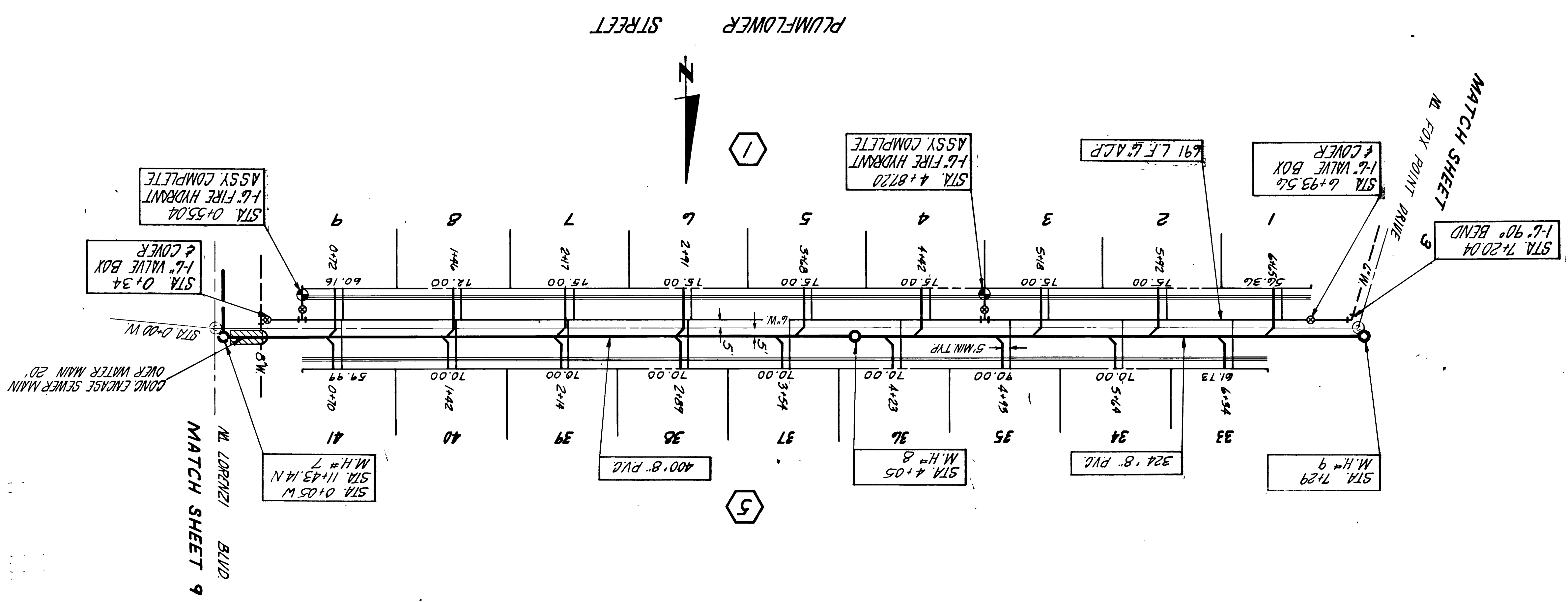
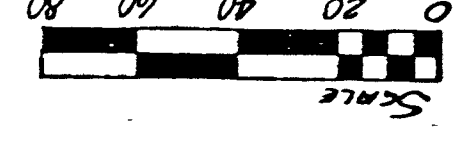
5291 1628 5291-2850

| | | | |
|---|---|--|---|
| WBC WBC Consultants Inc. Engineering, Surveying, Planning 5115 S. Industrial Rd. Suite 605 Las Vegas, Nev. 89118 702/736-2938 | Job No. 5-246-092-07 Sheet 1 of 9 SEWER & WATER PLANS SUNCREST MEADOWS | Date 3/79 Scale 1"=40' Horiz. 1"=4' Vert. | Project Mgr. Vice President PROFESSIONAL ENGINEER STATE OF NEVADA No. 46518 Name Title |
| Design By Date 10/10/79 By AZ | Revision CHANGED Date 9/17/79 By AZ | Revision CHANGED Date 5-21-79 By [Signature] | City of Las Vegas City Engineer Date Field Operation Engineer Date Sanitation Engineer Date Quality Control Engineer Date Las Vegas Valley Water District Date 5-21-79 City of Las Vegas Date |



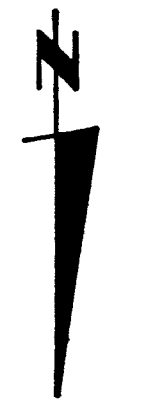
| DATE | BY | REVISION |
|------|----|----------|
| 2322 | | 18 |
| 2314 | | 12 |

| DATE | BY | REVISION |
|------|----|----------|
| | | |



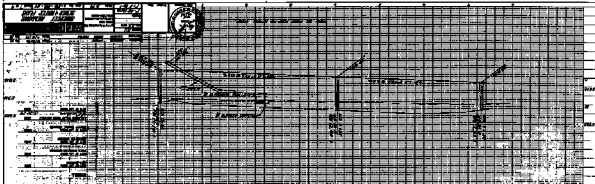
PHASE 2 IS NOT A PART OF PLAT AS APPROVED BY CITY COMMISSION
 UNIT 2

PLUMFLOWER STREET

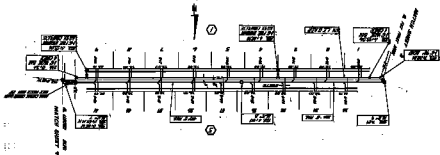


MATCH SHEET 9
 N. FOX POINT DRIVE

MATCH SHEET 9
 BLVD
 N. LORENZI



SECTION 1



PHASE 2 IS NOT A PART OF PLAT AS APPROVED BY CITY COMMISSION

