

LAS VEGAS FIRE DEPARTMENT

Fire Flow Requirements is 1000 gallons per minute at 20 pounds per square inch residual.

BASED ON:

Square footage: 22,425 Square feet

Largest area between 4-HOUR area separation walls: 22,425 SF

Building Height: 34'

Number of Stories: 1

Type of Construction: V-N

Occupancy:

Full Automatic Fire Sprinkler System: Yes

Reviewed By: *Robert Bull* Date: 1-26-02
Las Vegas Fire Dept.

LAS VEGAS FIRE DEPARTMENT
FIRE PREVENTION BUREAU 229-0399
FIRE PROTECTION ENGINEERING 229-0761

FIRE NOTE:

FIRE APPARATUS ACCESS ROAD SHALL BE PROVIDED AS REQUIRED BY SEC 902.2 OF UNIFORM FIRE CODE 1997 EDITION. ALL PARTS OF EXTERIOR BUILDING SHALL BE WITHIN 150' OF FIRE APPARATUS ACCESS ROAD.

LEGAL DESCRIPTION

APN 139-26-201-018 3.31 ACRES

A CERTAIN TRACT OR PARCEL OF LAND LYING AND BEING SITUATE IN THE CITY OF LAS VEGAS, COUNTY OF CLARK, STATE OF NEVADA, AND BEING A PORTION OF THE SOUTHEAST QUARTER (SE 1/4) OF THE NORTHWEST QUARTER (NW 1/4) OF SECTION 26, TOWNSHIP 20 SOUTH, RANGE 61 EAST, M.D.B.

BASIS OF BEARING

N 89° 55'06" E, BEING THE SOUTHLINE OF THE NW 1/4 OF SECTION 26 TOWNSHIP 20 SOUTH, RANGE 61 EAST, AND THE CENTERLINE OF WASHINGTON AVE AS SHOWN ON FILE 72 PAGE 17 OF PARCEL MAPS ON FILE IN THE OFFICE OF THE CLARK COUNTY RECORDER

BENCHMARK

BM# 2LV01-26N6
RIVET & PLATE IN TOP OF CURB, NE RETURN BRUCE AVE. AND SEARLES AVE (568 8833 METERS) (NAVD 88) (1866 41 FEET)

APPROVAL:

Bank Bower 12/19/02
LAS VEGAS VALLEY WATER DISTRICT DATE

UTILITY NOTE

UTILITY LOCATIONS SHOWN HEREON ARE APPROXIMATE ONLY. IT SHALL BE THE CONTRACTOR'S RESPONSIBILITY TO DETERMINE THE EXACT HORIZONTAL AND VERTICAL LOCATION OF ALL EXISTING UNDERGROUND UTILITIES PRIOR TO COMMENCING CONSTRUCTION. NO REPRESENTATION IS MADE THAT ALL EXISTING UTILITIES ARE SHOWN HEREON. THE ENGINEER ASSUMES NO RESPONSIBILITY FOR UTILITIES NOT SHOWN OR UTILITIES NOT SHOWN IN THEIR PROPER LOCATION.

Avoid cutting underground utility lines. It's costly.
before Call you Dig
1-800-227-2600
UNDERGROUND SERVICE (USA)

Avoid hitting overhead power lines. It's costly.
CALL BEFORE YOU DIG
CALL 1-702-593-6111

SUNBELT COMMUNICATIONS
ENGINEERING CORPORATION
1421 E. SUNSET ROAD, SUITE 17, LAS VEGAS, NEVADA 89119
PHONE: (702) 252-9208 FAX: (702) 252-9207

DESIGNED: A.P.H. CHECKED: A.J.H. SCALE: 1"=30' FILE NO.: 72282 DATE: 05/05/02

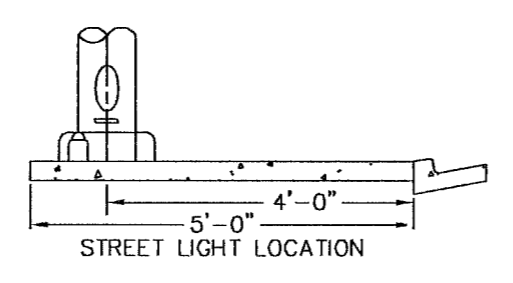
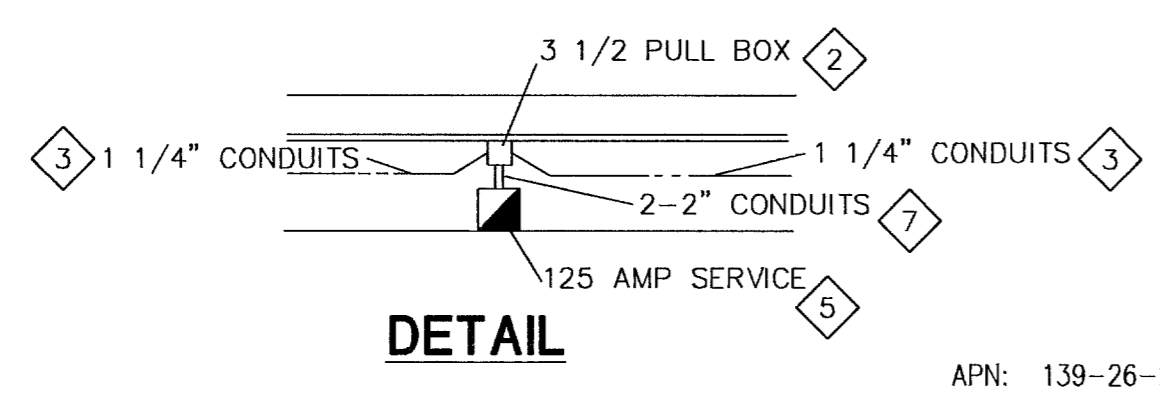
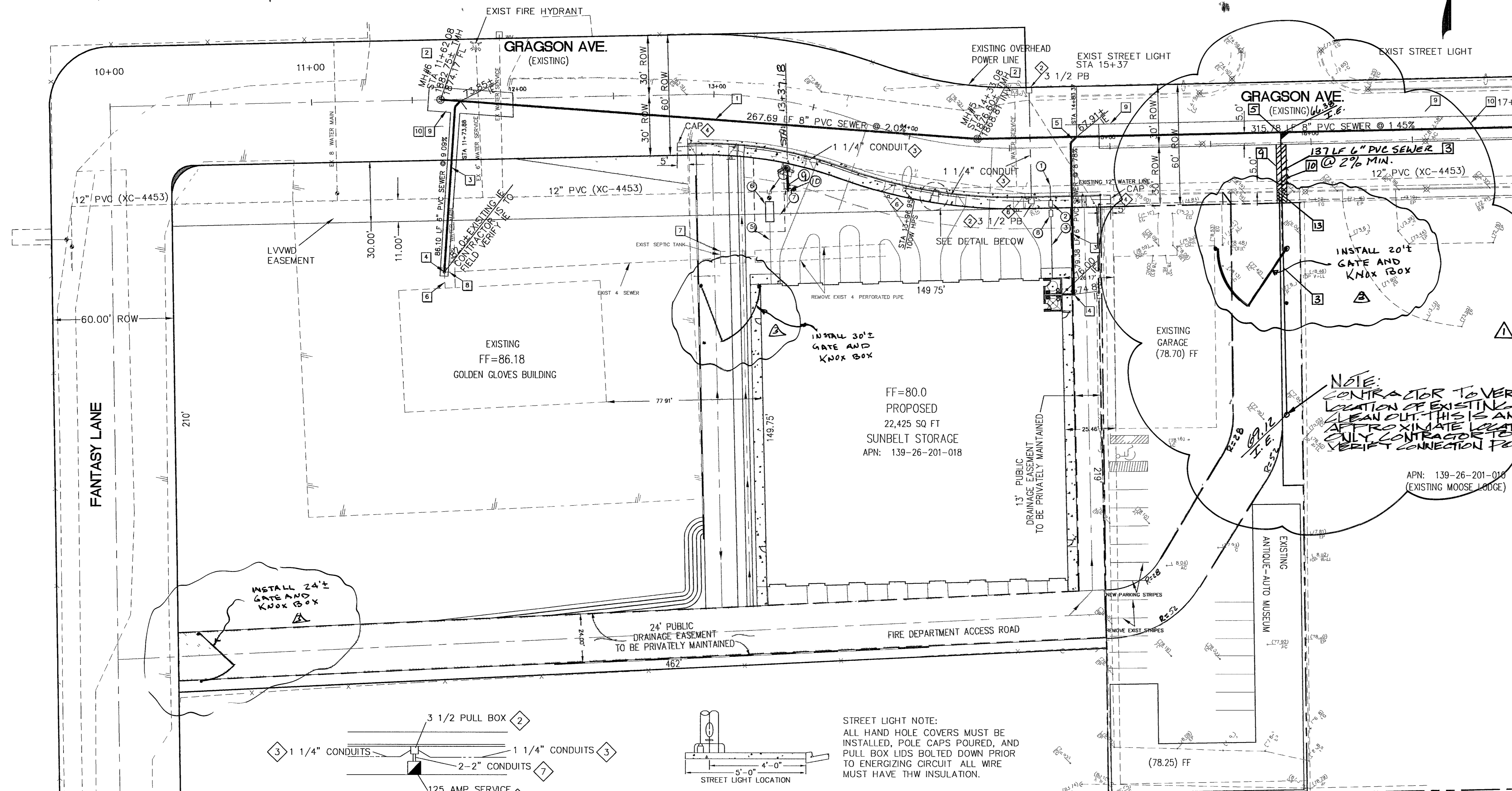
SUNBELT STORAGE UTILITY PLAN

DEVELOPER: SUNBELT COMMUNICATIONS
1608 E. GRAGSON AVE.
LAS VEGAS, NV. 89101
PHONE: (702) 857-5142 FAX: (702) 642-5083

BY APPD: [Signature] DATE: 1-26-02
APPD: [Signature] DATE: 1-26-02
REV: [Signature] DATE: 1-26-02
REV: [Signature] DATE: 1-26-02

ANDREW J. HUSTAD
CIVIL
12503 W. WASHINGTON AVE., SUITE 100
LAS VEGAS, NV 89136
PHONE: (702) 735-1100 FAX: (702) 735-1101

SHEET C4
4 OF 8 SHEETS
DRAWING NO.



STREETLIGHT NOTES

- 100W HPS STREETLIGHT
- INSTALL SIZE 3 1/2 PRECAST REINFORCED CONCRETE PULL BOX
- INSTALL 1 1/4" CONDUIT
- INSTALL 1 1/4" CAP
- INSTALL 125 AMP 240V PAD MOUNT SERVICE WITH
 - 1 EA 1 POLE 60 AMP CIRCUIT BREAKERS
 - 1 EA 1 POLE 15 AMP CIRCUIT BREAKERS
 - 1 EA 1 POLE 60 AMP CONTACTORS
 - 1 EA BY-PASS SWITCH PER CONTACTOR
- INSTALL STOP SIGN (R1-1) 30"
- INSTALL 2" CONDUIT

SEWER CONTRIBUTION

DAILY AVERAGE FLOW 0.0034 MGD
PEAK FLOW 0.0118 MGD

GENERAL NOTES

- ALL ONSITE SEWER AND WATER ARE PRIVATE
- MH & CLEANOUT RIM ELEVATIONS SHOWN HEREON ARE ± 0.5' OF FINAL PAVEMENT ELEVATIONS.

WATER NOTES

- TAP EXISTING 12" LINE WITH 12"x1" SERVICE SADDLE PER UDACS PLATE 1D.
- INSTALL 1" WATER METER PER UDS STD PLATE 1-D
- INSTALL 1" MAIN WATER LINE TO BUILDING
- INSTALL 12"x6" TAPPING SLEEVE AND 6" TAPPING VALVE
- 6" FIRE LINE AWWA C-900 CLASS 150
- INSTALL 6" DOUBLE CHECK DETECTOR ASSEMBLY PER UDACS PLATE 20 B
- 15'x35' LVVWD EASEMENT
- 1" RPPA PER UDACS PLATE 11A
- INSTALL FIRE HYDRANT AND 6" LATERAL
- INSTALL 12"x6" TAPPING SLEEVE AND 6" TAPPING VALVE.

SEWER NOTES

- INSTALL 8" PVC SEWER MAIN
- INSTALL 48" SANITARY MANHOLE PER CCSD DWG NO. SD-1
- INSTALL 6" PVC SEWER LINE
- INSTALL 6" CLEAN OUT
- INSTALL 8"x8"x6" WYE
- EXISTING 4" SEWER LATERAL
- CRUSH AND FILL EXISTING SEPTIC TANK PER HEALTH DISTRICT REQUIREMENTS
- CAP AND CONCRETE EXISTING 4" SEWER
- SAWCUT LINE
- REMOVE AND REPLACE 3" ASPHALT AND BACKFILL TRENCH PER STD DWG NO. 503
- REMOVE AND REPLACE 4" ASPHALT AND BACKFILL TRENCH PER STD DWG NO. 504
- REMOVE AND RECONSTRUCT ONE (1) SECTION OF CROSS GUTTER FROM CENTER LINE TO CONTROL JOINT PER DWG #228.
- REMOVE AND REPLACE SIDEWALK, CURB AND GUTTER. MINIMUM (1) SECTION

REMOVAL OF EXISTING LEACH FIELD

A RECEIPT WILL NEED TO BE GIVEN TO THE LOCAL HEALTH DISTRICT SHOWING THAT THE LEACH FIELD AND ANY CONTAMINATED SOIL SURROUNDING THE LEACH FIELD WAS REMOVED AND LEAGELY DUMPED. ALL MATERIAL WILL BE DUMPED AT APEX.

43183 44949 45250 48588 46756