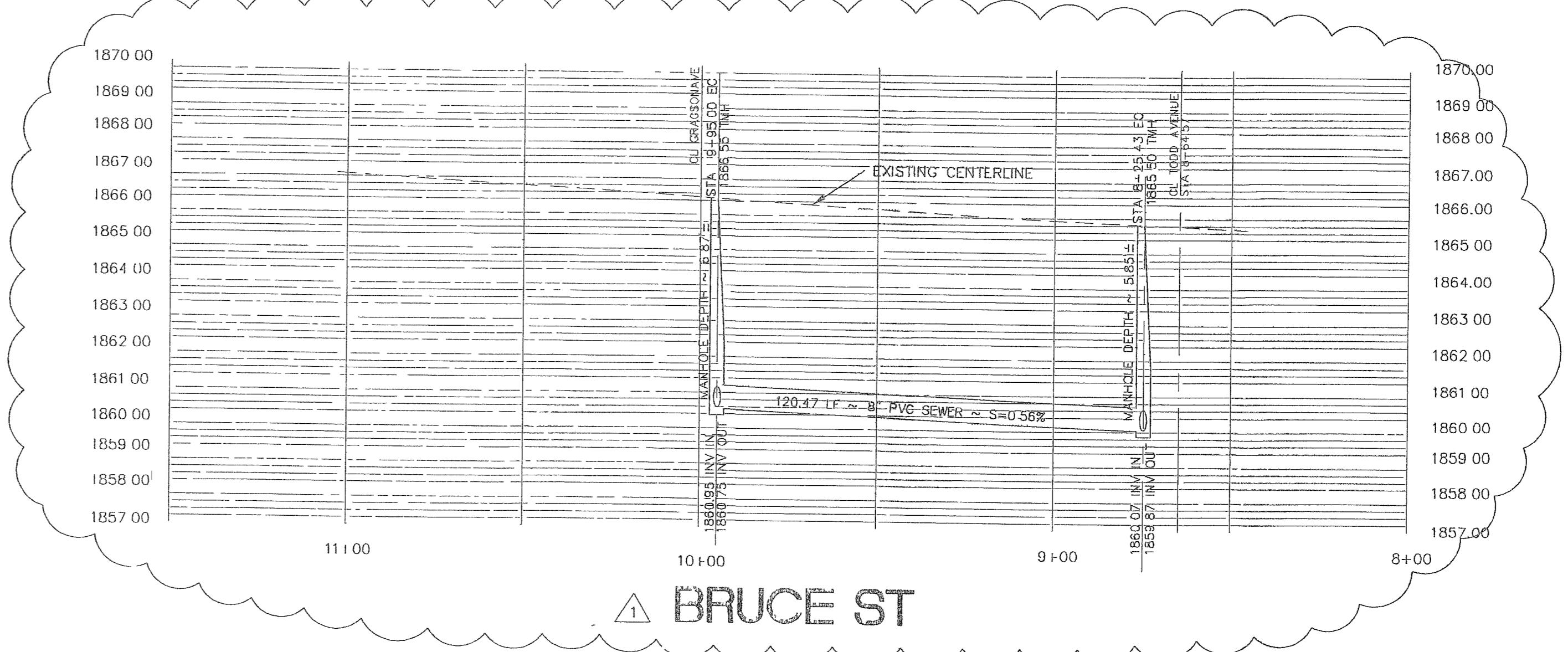
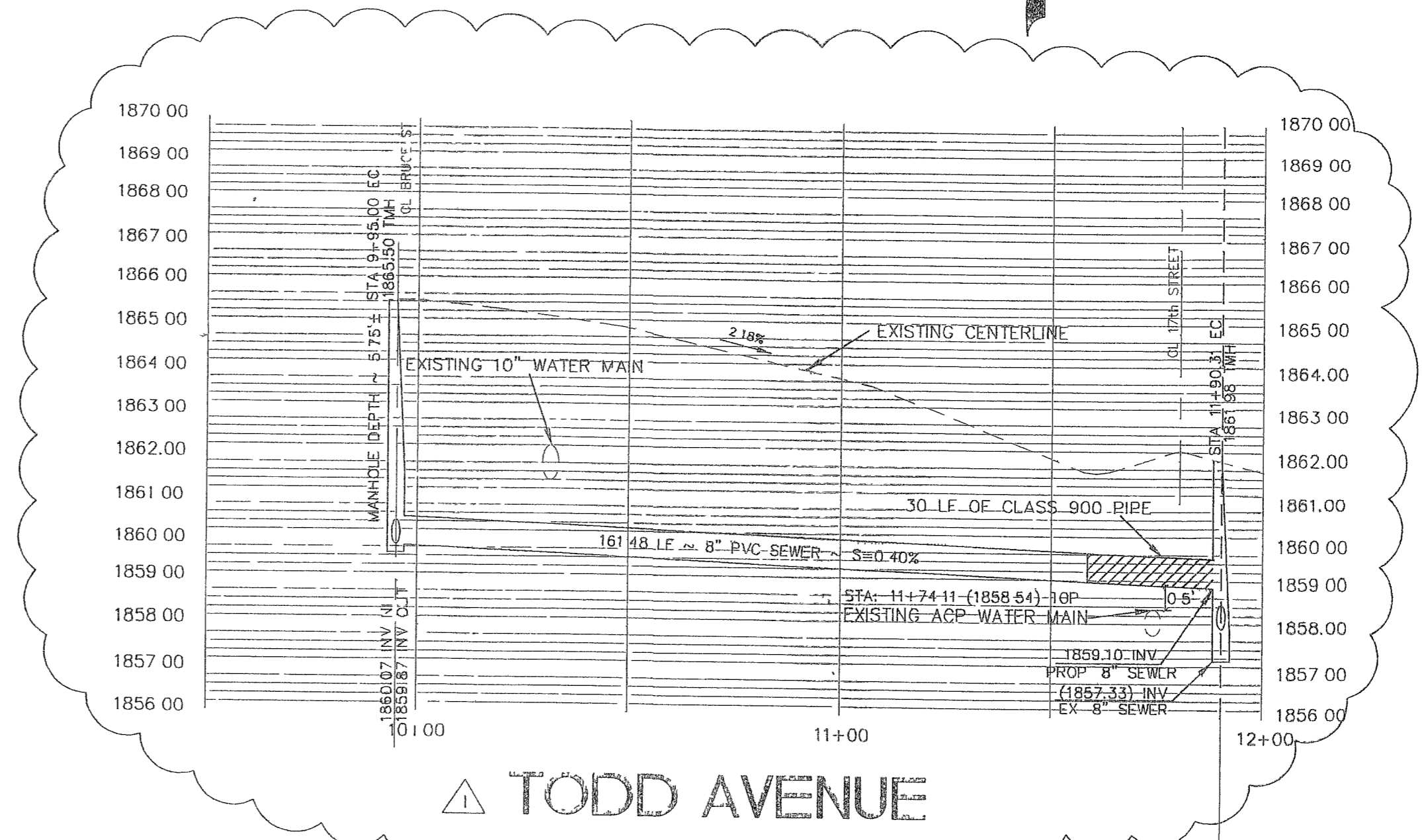
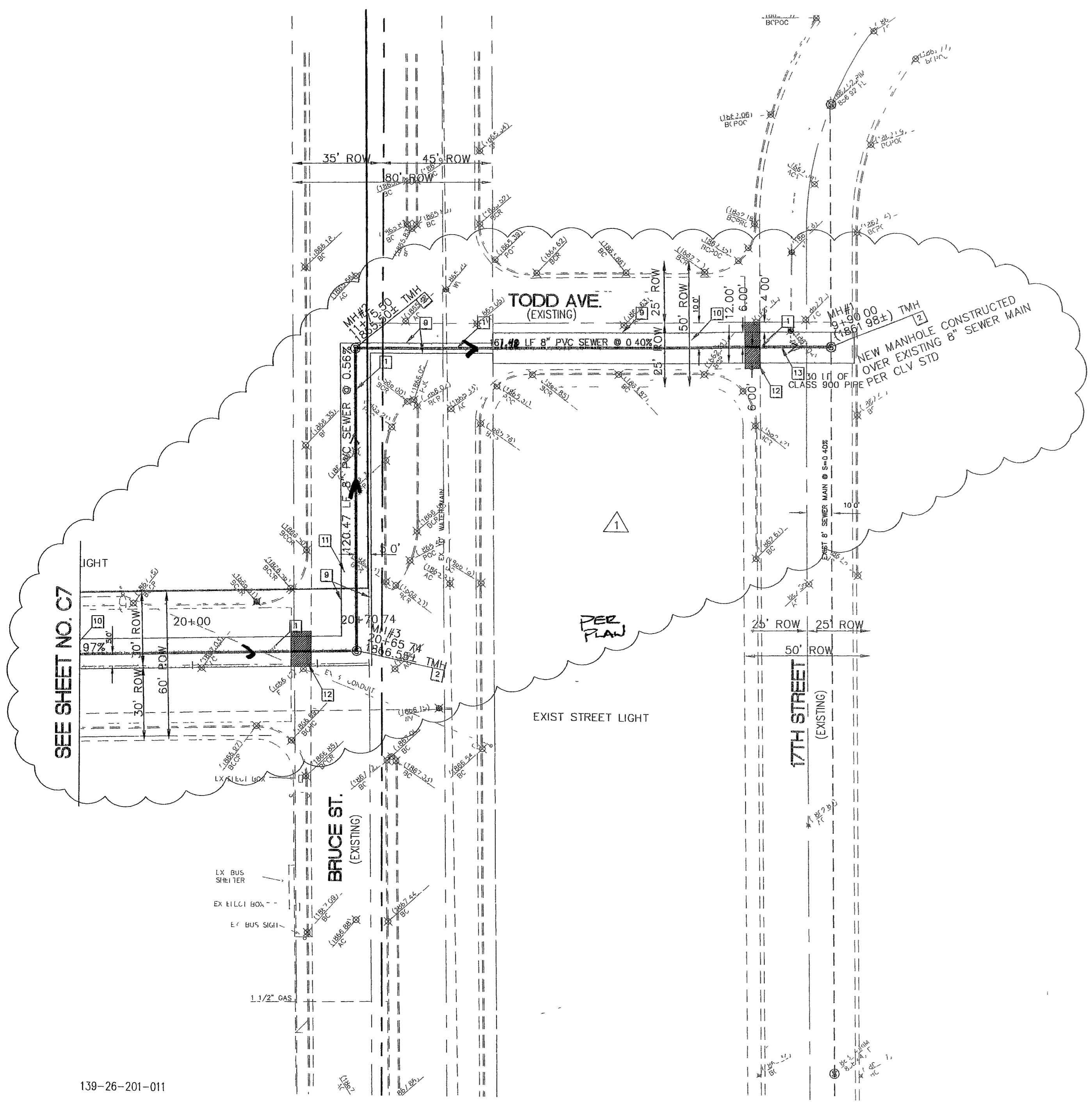
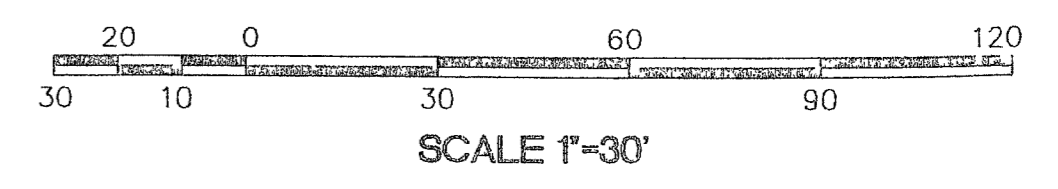


REV.	DATE	DESCRIPTION
1	8/15/02	REVISE SEWER MAIN
2		REVISE WATER MAIN



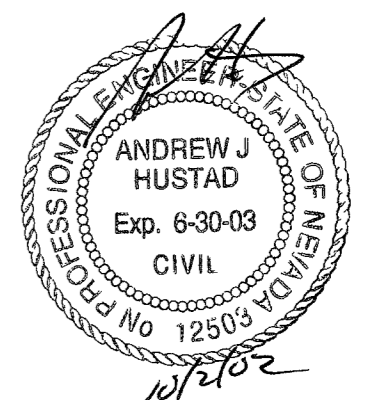
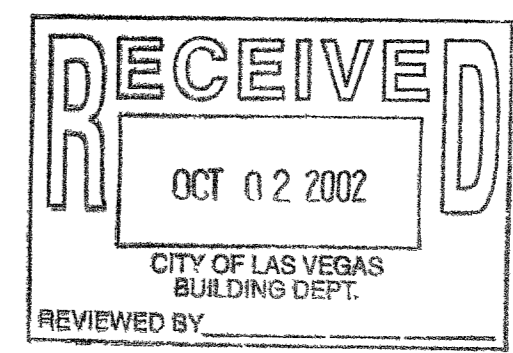
- WATER NOTES**
- 1" TAP TO BE INSTALLED BY LVWMD
 - INSTALL 1" WATER METER PER UDS STD. PLATE 1-C
 - INSTALL 1" MAIN WATER LINE TO BUILDING
 - INSTALL 12" X 12" X 6" MECH. TAPPING SLEEVE AND 6" TAPPING SLEEVE
 - 6" FIRE LINE AWWA C-900 CLASS 150
 - INSTALL 6" DOUBLE CHECK DETECTOR ASSEMBLY PER UDACS PLATE 20 B
 - 10' X 35' LVWMD EASEMENT
- SEWER NOTES**
1. INSTALL 8" PVC SEWER MAIN
 - INSTALL 48" SANITARY MANHOLE PER CCSD DWG NO. SD-1
 - INSTALL 6" PVC SEWER LINE
 - INSTALL 6" CLEAN OUT
 - INSTALL 8" X 8" X 6" WYE
 - EXISTING 4" SEWER LATERAL
 - CRUSH AND FILL EXISTING SEPTIC TANK PER HEALTH DISTRICT REQUIREMENTS
 - CAP AND CONCRETE EXISTING 4" SEWER
 - SAWCUT LINE
 - REMOVE AND REPLACE 3" ASPHALT AND BACKFILL TRENCH PER STD DWG NO. 503
 - REMOVE AND REPLACE 4" ASPHALT AND BACKFILL TRENCH PER STD DWG NO. 504
 - REMOVE AND RECONSTRUCT ONE (1) SECTION OF CROSS-CUTTER FROM CENTERLINE TO CONTROL JOINT PER DWG # 228
 - INSTALL 8" CLASS 900 SEWER MAIN

QUANTITIES

	PRIVATE	PUBLIC
1" TAP	0 LF	1 EA
1" WATER METER	0 EA	1 CA
1" MAIN WATER LINE	35 LF	11 LF
12" X 12" X 6" MECH. TAPPING SLEEVE	0 EA	1 EA
6" FIRE LINE	35 LF	0 EA
6" DOUBLE CHECK DETECTOR ASSEMBLY	0 EA	1 EA
10' X 35' LVWMD EASEMENT	0 EA	0 EA

QUANTITIES

	PRIVATE	PUBLIC
8" PVC SEWER MAIN	N/A	1,210.00 LF
48" SANITARY MANHOLE	N/A	6 EA
6" PVC SEWER LINE	145 LF	N/A
6" CLEAN OUT	2 CA	N/A
8" X 8" X 6" WYE	N/A	2 EA
EXISTING 4" SEWER LATERAL	N/A	2 EA
CRUSH AND FILL EXISTING SEPTIC TANK	137.52 LF	N/A
CAP AND CONCRETE EXISTING 4" SEWER	-	1 EA
SAWCUT LINE	-	1 EA
REMOVE AND REPLACE 3" ASPHALT AND BACKFILL TRENCH	-	918 SY
REMOVE AND REPLACE 4" ASPHALT AND BACKFILL TRENCH	-	209 SY
REMOVE AND RECONSTRUCT ONE (1) SECTION OF CROSS-CUTTER	-	25 SY
INSTALL 8" CLASS 900 SEWER MAIN	-	30 LF



UTILITY NOTE

UTILITY LOCATIONS SHOWN HEREON ARE APPROXIMATE ONLY. IT SHALL BE THE CONTRACTOR'S RESPONSIBILITY TO DETERMINE THE EXACT HORIZONTAL AND VERTICAL LOCATION OF ALL EXISTING UNDERGROUND UTILITIES PRIOR TO COMMENCING CONSTRUCTION. NO REPRESENTATION IS MADE THAT ALL EXISTING UTILITIES ARE SHOWN HEREON. THE ENGINEER ASSUMES NO RESPONSIBILITY FOR UTILITIES NOT SHOWN OR UTILITIES NOT SHOWN IN THEIR PROPER LOCATION.

Avoid cutting underground utility lines. It's costly.
Call before you dig
1-800-227-2600
UNDERGROUND SERVICE (USA)

Avoid hitting overhead power lines. It's costly.
CALL BEFORE YOU DIG OVERHEAD
CALL 1-702-593-8111

139-26-201-011

LEGAL DESCRIPTION
APN 139-26-201-018 3.31 ACRES
A CERTAIN TRACT OR PARCEL OF LAND LYING AND BEING SITUATE IN THE CITY OF LAS VEGAS, COUNTY OF CLARK, STATE OF NEVADA, AND BEING A PORTION OF THE SOUTHEAST QUARTER (SE 1/4) OF THE NORTHWEST QUARTER (NW 1/4) OF SECTION 26, TOWNSHIP 20 SOUTH, RANGE 61 EAST, M D B

BASIS OF BEARING
N 89° 55' 06" E, BEING THE SOUTHLINE OF THE NW 1/4 OF SECTION 26 TOWNSHIP 20 SOUTH, RANGE 61 EAST, AND THE CENTERLINE OF WASHINGTON AVE. AS SHOWN ON FILE 72 PAGE 17 OF PARCEL MAPS ON FILE IN THE OFFICE OF THE CLARK COUNTY RECORDER

BENCHMARK
BM# 21.V01-26N6
RIVET & PLATE IN 10P OF CURB, NE RETURN
BRUCE AVE AND SEARLES AVE
(568.8833 METERS)
(NAVD 88)
(1866.41 FEET)

"As Built"