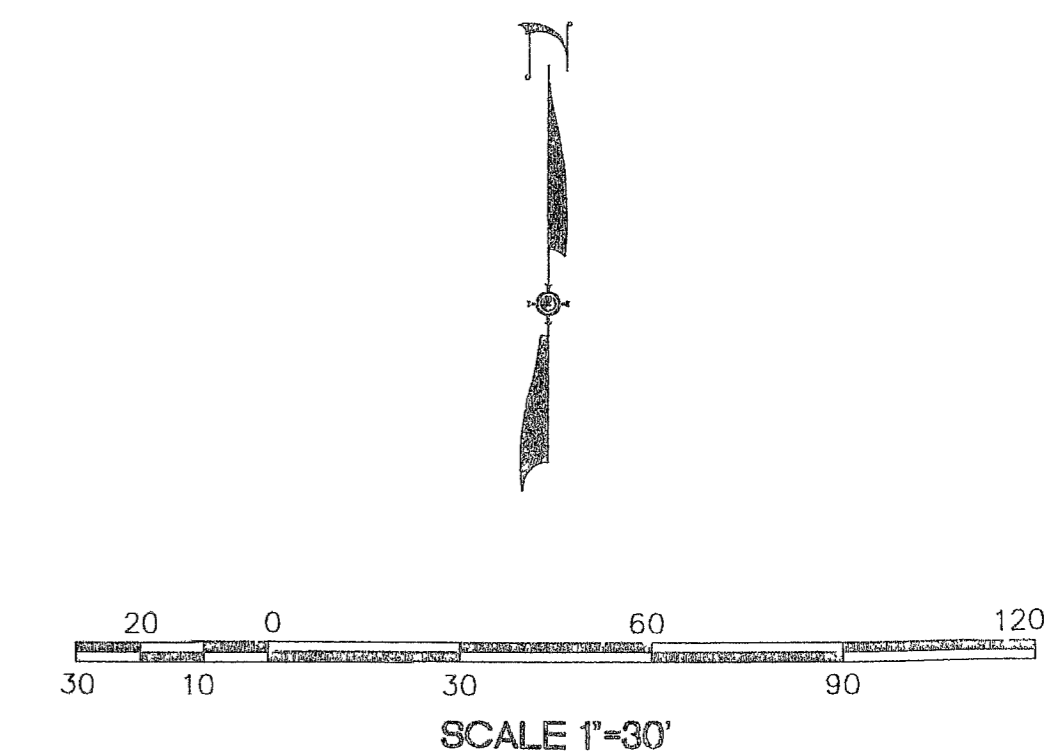
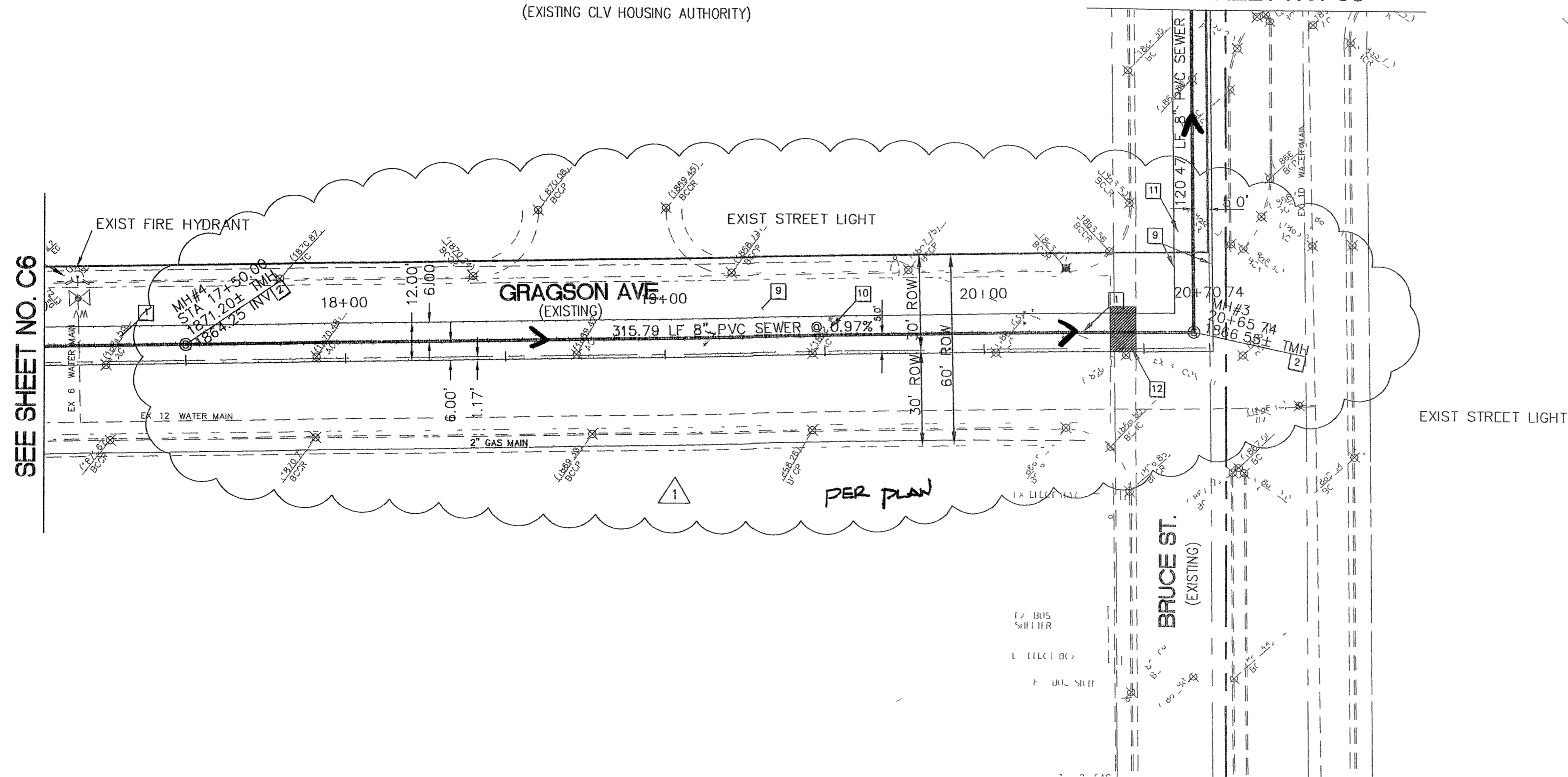


(EXISTING CLV HOUSING AUTHORITY)

SEE SHEET NO. C8



LEGAL DESCRIPTION

APN 139-26-201-018 3.31 ACRES

A CERTAIN TRACT OR PARCEL OF LAND LYING AND BEING SITUATE IN THE CITY OF LAS VEGAS, COUNTY OF CLARK, STATE OF NEVADA, AND BEING A PORTION OF THE SOUTHEAST QUARTER (SE 1/4) OF THE NORTHWEST QUARTER (NW 1/4) OF SECTION 26, TOWNSHIP 20 SOUTH, RANGE 61 EAST, M.D.B.

BASIS OF BEARING

N 89° 55'06" E, BEING THE SOUTHLINE OF THE NW 1/4 OF SECTION 26 TOWNSHIP 20 SOUTH, RANGE 61 EAST, AND THE CENTERLINE OF WASHINGTON AVE. AS SHOWN ON FILE 72 PAGE 17 OF PARCEL MAPS ON FILE IN THE OFFICE OF THE CLARK COUNTY RECORDER

BENCHMARK

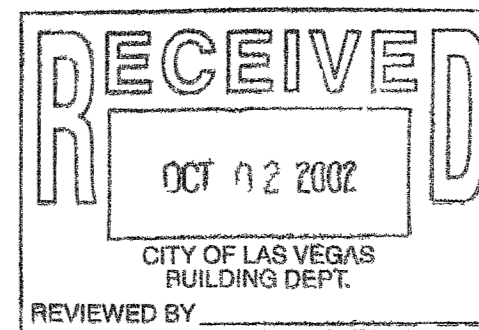
BM# 2LV01-26N6
RIVET & PLATE IN TOP OF CURB, NE RETURN
BRUCE AVE AND SEARLES AVE
(568 8833 METERS)
(NAVD 88)
(1866 41 FEET)

WATER NOTES

- 1" TAP TO BE INSTALLED BY LVVWD
- INSTALL 1" WATER METER PER UDCS STD. PLATE 1-C
- INSTALL 1" MAIN WATER LINE TO BUILDING
- INSTALL 12"X12"X6" MECH TAPPING SLEEVE AND 6" TAPPING SLEEVE
- 6" FIRE LINE AWWA C-900 CLASS 150
- INSTALL 6" DOUBLE CHECK DETECTOR ASSEMBLY PER UDCS PLATE 20 B
- 10'X35' LVVWD EASEMENT

QUANTITIES

	PRIVATE	PUBLIC
0 LF	1 EA	
0 EA	1 EA	
35 LF	11 LF	
0 CA	1 CA	
35 LF	0 EA	
0 EA	1 EA	
0 CA	0 EA	



SEWER NOTES

- INSTALL 8" PVC SEWER MAIN
- INSTALL 48" SANITARY MANHOLE PER CCSD DWG NO SD-1
- INSTALL 6" PVC SEWER LINE
- INSTALL 6" CLEAN OUT
- INSTALL 8" X 8" X 6" NYE
- EXISTING 4" SEWER LATERAL
- CRUSH AND FILL EXISTING SEPTIC TANK PER HEALTH DISTRICT REQUIREMENTS
- CAP AND CONCRETE EXISTING 4" SEWER
- SAWCUT LINE
- REMOVE AND REPLACE 3" ASPHALT AND BACKFILL TRENCH PER STD DWG NO 503
- REMOVE AND REPLACE 4" ASPHALT AND BACKFILL TRENCH PER STD DWG NO 504
- REMOVE AND RECONSTRUCT ONE (1) SECTION OF CROSS CULVERT FROM CENTER LINE TO CONTROL JOINT PER DWG # 228
- INSTALL 8" CLASS 900 SEWER MAIN

QUANTITIES

	PRIVATE	PUBLIC
N/A	1,210.00 LF	
N/A	6 EA	
145 LF	N/A	
2 EA	N/A	
N/A	2 EA	
137.52 LF	N/A	
-	1 EA	
-	1 EA	
-	-	
-	918 SY	
-	209 SY	
-	25 SY	
-	30 LF	

UTILITY NOTE

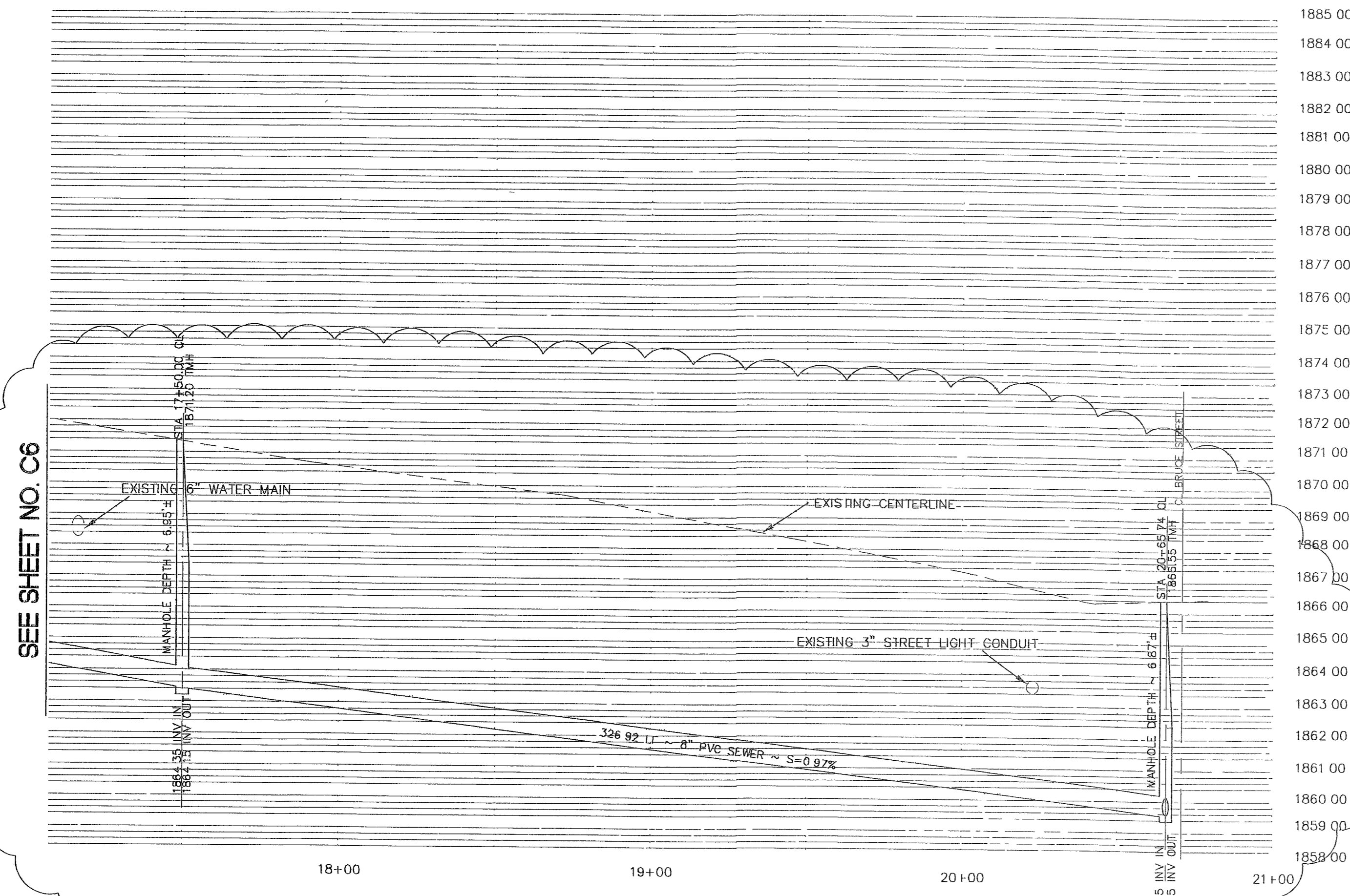
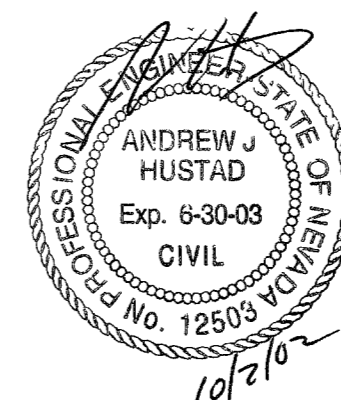
UTILITY LOCATIONS SHOWN HEREON ARE APPROXIMATE ONLY. IT SHALL BE THE CONTRACTOR'S RESPONSIBILITY TO DETERMINE THE EXACT HORIZONTAL AND VERTICAL LOCATION OF ALL EXISTING UNDERGROUND UTILITIES PRIOR TO COMMENCING CONSTRUCTION. NO REPRESENTATION IS MADE THAT ALL EXISTING UTILITIES ARE SHOWN HEREON. THE ENGINEER ASSUMES NO RESPONSIBILITY FOR UTILITIES NOT SHOWN OR UTILITIES NOT SHOWN IN THEIR PROPER LOCATION.

Avoid cutting underground utility lines. It's costly.

CALL BEFORE YOU DIG
1-800-227-2600
UNDERGROUND SERVICE (USA)

Avoid hitting overhead power lines. It's costly.

CALL BEFORE YOU DIG
CALL 1-702-593-8111



SEE SHEET NO. C6

SEE SHEET NO. C6

DEVELOPPER
SUNBELT COMMUNICATIONS

1608 E. GRAGSON AVE.
LAS VEGAS, NV 89101
PHONE (702) 657-5142
FAX (702) 642-5093

DESIGNED: A.P.H.
CHECKED: A.J.H.
SCALE: HOR. 1"=30'
VER. 1"=5'
DATE: 10/2/02

SUNBELT STORAGE
PLAN AND PROFILE
GRAGSON AVENUE

CLARK COUNTY
NEVADA
LAS VEGAS

REV.	DATE	DESCRIPTION	BY	APP'D
1	8/15/02	REVISE SEWER MAIN	APL	JL
2	10/2/02	REVISE WATER LINE TO 1"	APL	JL

STATE OF NEVADA
ANDREW J. HUSTAD
Professional Engineer
No. 12505
SHEET
7 OF 8 SHEETS
DRAWING NO.
5447