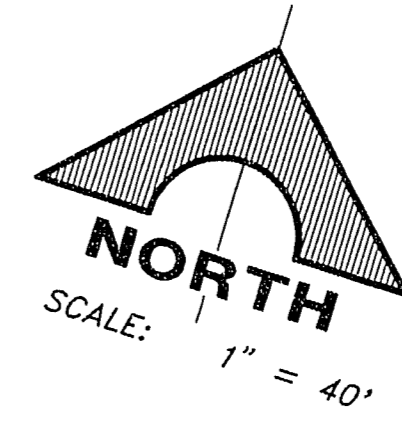
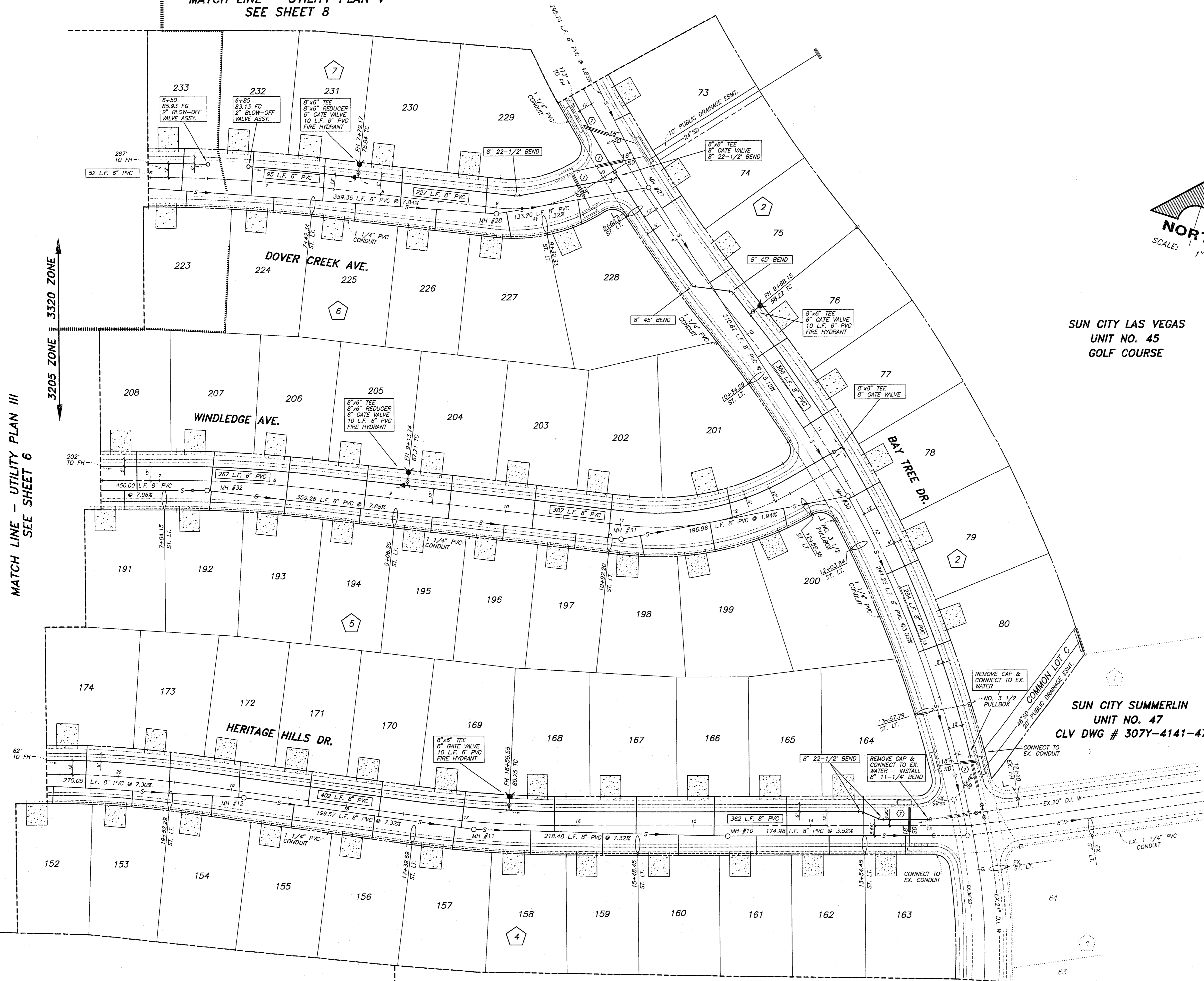


JOB NO. 701.244 PLOTTED: 12/19/95 12:24 am DRAWING: C:\49\UTL\701.244-7.dwg BY: ssp

MATCH LINE - UTILITY PLAN III SEE SHEET 6

3320 ZONE 3205 ZONE

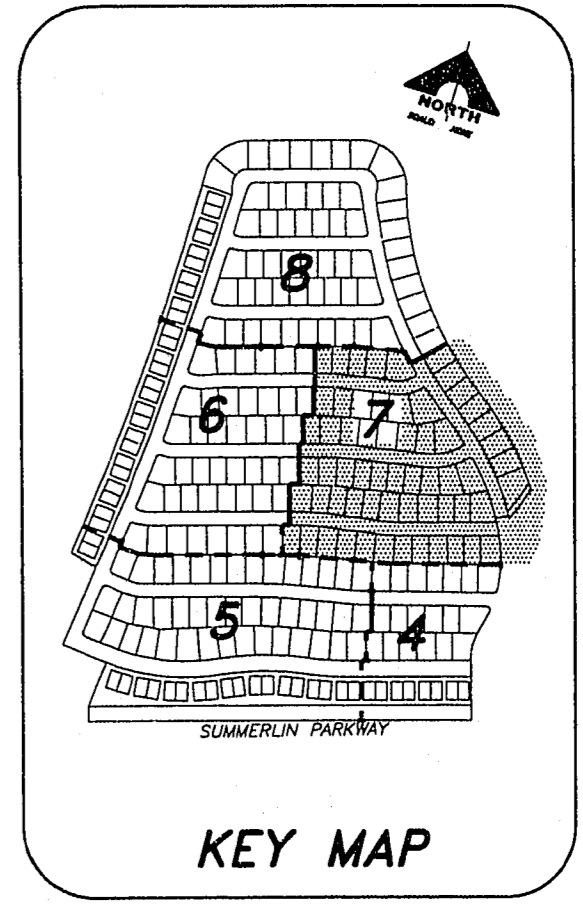
MATCH LINE - UTILITY PLAN V SEE SHEET 8



SUN CITY LAS VEGAS  
UNIT NO. 45  
GOLF COURSE

**PROPERTY IN 3320 ZONE**  
THIS PROPERTY MAY HAVE STATIC WATER PRESSURE IN EXCESS OF 80 PSI. THE UNIFORM PLUMBING CODE REQUIRES THAT INDIVIDUAL, ON-SITE (PRIVATE) PRESSURE REDUCING VALVES BE INSTALLED WHENEVER THE PRESSURE EXCEEDS 80 PSI. PVC'S ARE THE DEVELOPER'S RESPONSIBILITY AND WILL NOT BE INSPECTED OR INCLUDED IN THE ACCEPTANCE OF LIVED FACILITIES.

SUN CITY SUMMERLIN  
UNIT NO. 47  
CLV DWG # 307Y-4141-47



APPROVED FOR CONSTRUCTION  
1ST APP - 12/10/95  
12/10/95  
LAS VEGAS VALLEY WATER DISTRICT DATE

NOTE:  
ALL SEWERS SHOWN ON THIS SHEET  
ARE PUBLIC SEWERS.

MATCH LINE - UTILITY PLAN I  
SEE SHEET 4

REV	DATE	DESCRIPTION

RECOMMENDED BY: [Signature]  
G. C. WALLACE, INC.  
Engineering/Architecture  
1535 SOUTH RAINBOW BLVD./LAS VEGAS, NEVADA 89102

DEL WEBB COMMUNITIES, INC.  
SUN CITY SUMMERLIN - UNIT NO. 49  
UTILITY PLAN IV

SHEET  
7  
OF 32 SHEETS

19-12-46 307Y-4141-49