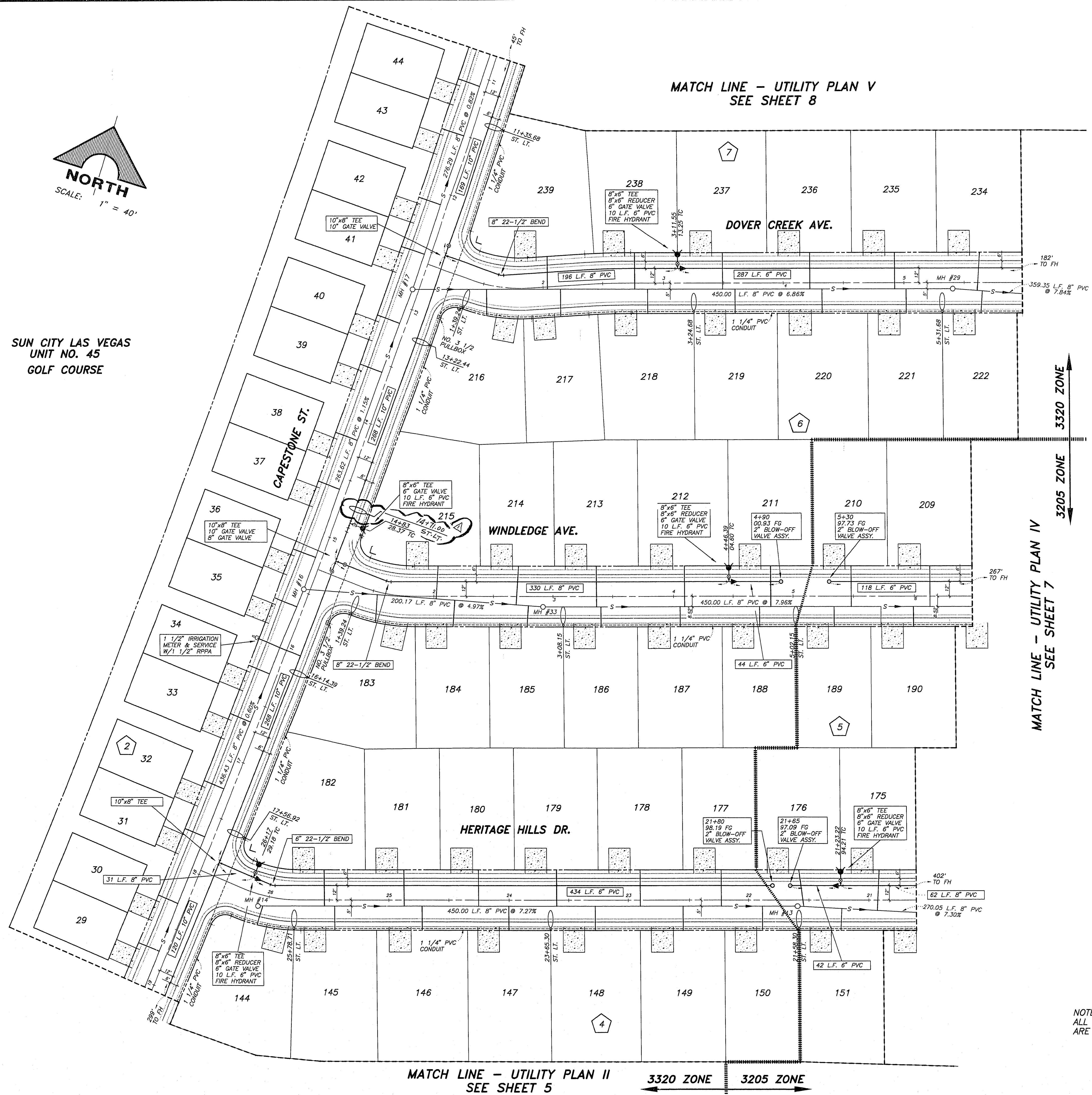


SUN CITY LAS VEGAS
UNIT NO. 45
GOLF COURSE



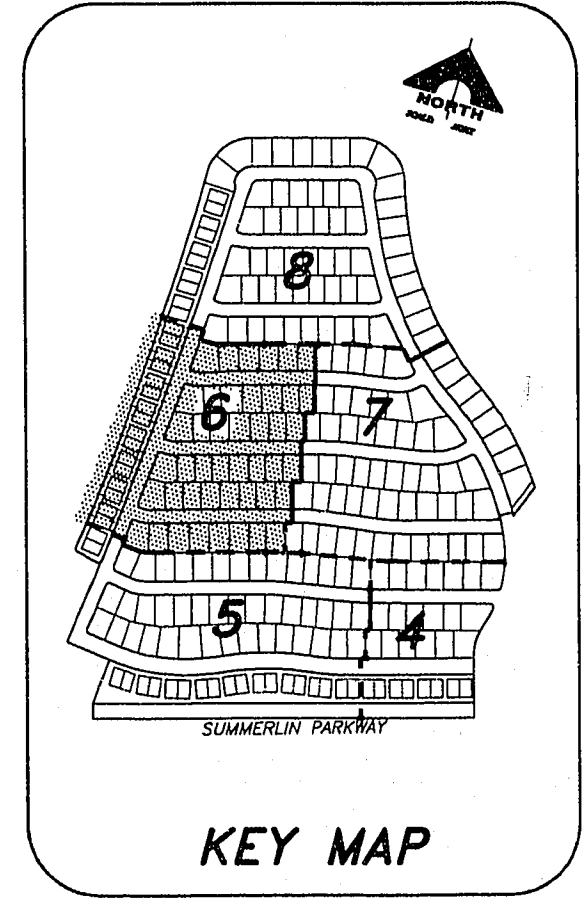
MATCH LINE - UTILITY PLAN V
SEE SHEET 8

MATCH LINE - UTILITY PLAN IV
SEE SHEET 7

MATCH LINE - UTILITY PLAN II
SEE SHEET 5

PROPERTY IN 3320 ZONE

THIS PROPERTY MAY HAVE STATIC WATER PRESSURE IN EXCESS OF 80 PSI. THE UNIFORM PLUMBING CODE REQUIRES THAT INDIVIDUAL, ON-SITE (PRIVATE) PRESSURE REDUCING VALVES BE INSTALLED WHENEVER THE PRESSURE EXCEEDS 80 PSI. PVC'S ARE THE DEVELOPER'S RESPONSIBILITY AND WILL NOT BE INSPECTED OR INCLUDED IN THE ACCEPTANCE OF LVWD FACILITIES.



KEY MAP

NOTE:
ALL SEWERS SHOWN ON THIS SHEET
ARE PUBLIC SEWERS.

APPROVED FOR CONSTRUCTION
15T AP 12/11/95
12/10/94
LAS VEGAS VALLEY WATER DISTRICT
DATE

| REV | DATE | DESCRIPTION | CL. NO. | DATE |
|-----|----------|-------------------------|---------|----------|
| 1 | 12/11/95 | ISSUED FOR CONSTRUCTION | 15T | 12/11/95 |

RECOMMENDED BY:
SONNY WALLACE, INC.
ENGINEERING/ARCHITECTURE
1555 SOUTH RAINBOW BLVD./LAS VEGAS, NEVADA 89102

DEL WEBB COMMUNITIES, INC.
SUN CITY SUMMERLIN - UNIT NO. 49
UTILITY PLAN III

SHEET
6
OF 32 SHEETS

JOB NO. 701.244 PLOTTED: 12/10/95 11:54 am DRAWING: C:\49\UTIL\PL\049-6 BR: 049

10-12-45 307Y-4141-49