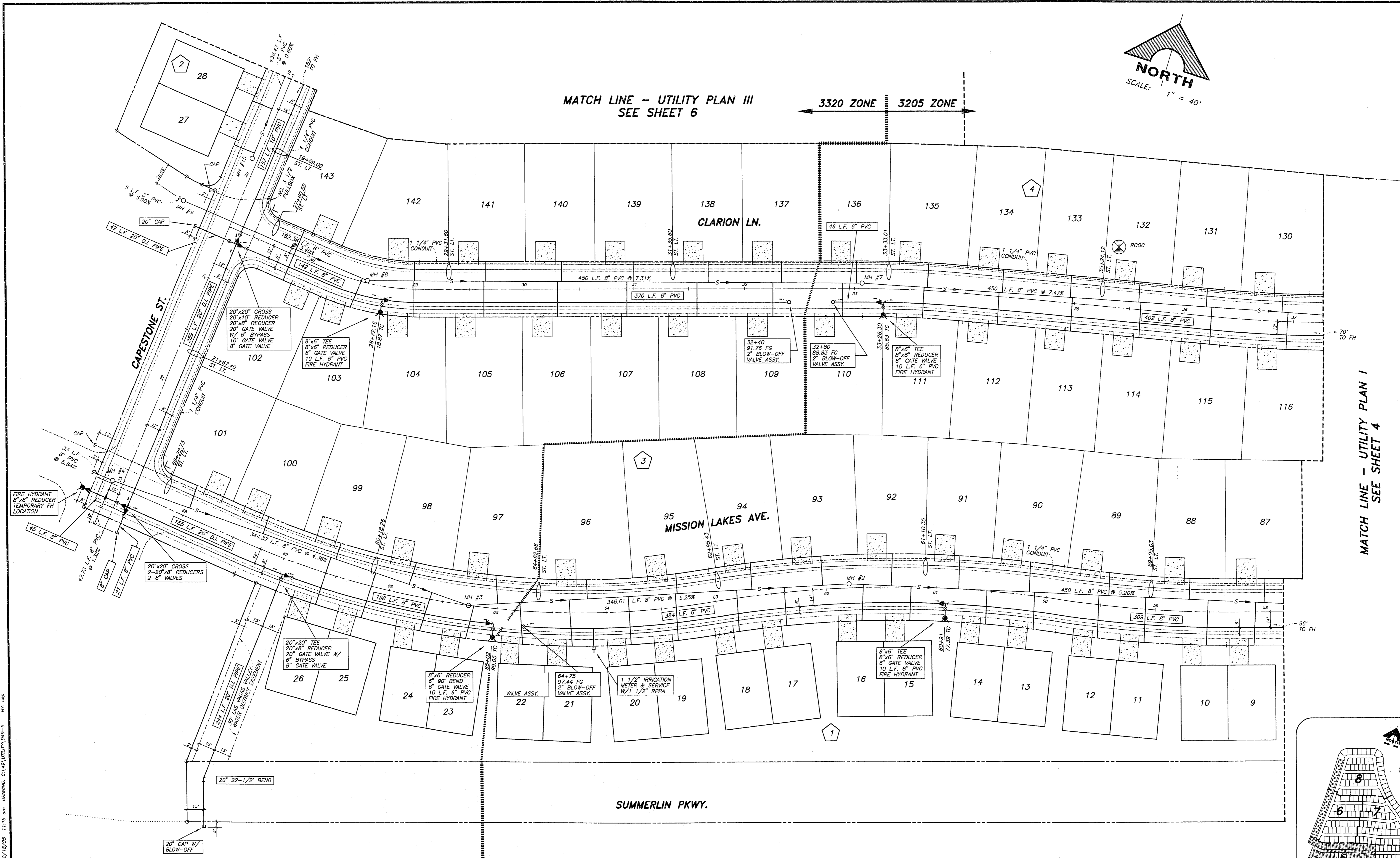
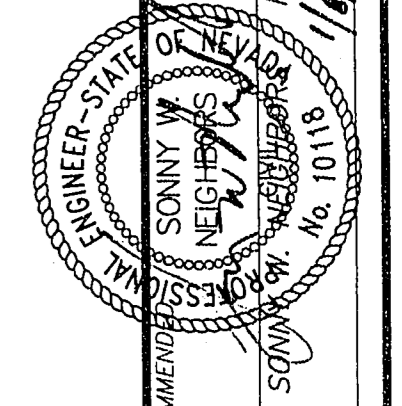


MATCH LINE - UTILITY PLAN III
SEE SHEET 6

3320 ZONE 3205 ZONE

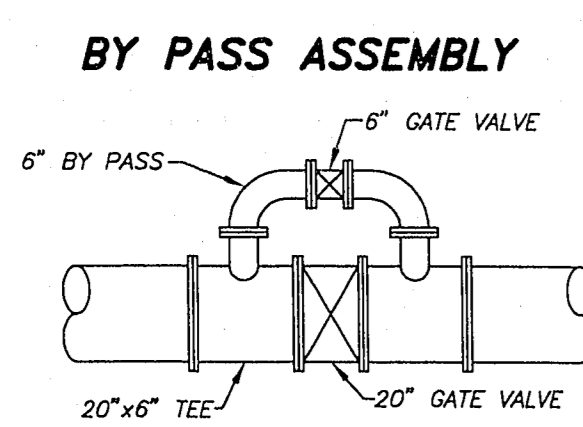
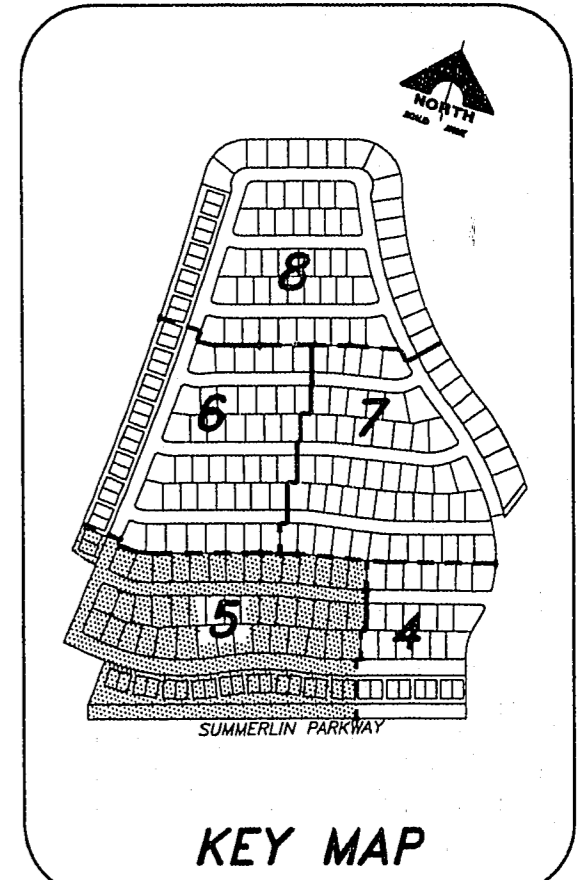


MATCH LINE - UTILITY PLAN I
SEE SHEET 4



G.C. WALLACE, INC.
Engineering/Architecture
1555 SOUTH RAINBOW BLVD./LAS VEGAS, NEVADA 89102

DEL WEBB COMMUNITIES, INC.
SUN CITY SUMMERLIN - UNIT NO. 49
UTILITY PLAN II



PROPERTY IN 3320 ZONE
THIS PROPERTY MAY HAVE STATIC WATER PRESSURE IN EXCESS OF 80 PSI. THE UNIFORM PLUMBING CODE REQUIRES THAT INDIVIDUAL, ON-SITE (PRIVATE) PRESSURE REDUCING VALVES BE INSTALLED WHENEVER THE PRESSURE EXCEEDS 80 PSI. PRVs ARE THE DEVELOPER'S RESPONSIBILITY AND WILL NOT BE INSPECTED OR INCLUDED IN THE ACCEPTANCE OF LIVING FACILITIES.

NOTE:
ALL SEWERS SHOWN ON THIS SHEET
ARE PUBLIC SEWERS.

APPROVED FOR CONSTRUCTION
15T *[Signature]* 12/01/95
LAS VEGAS VALLEY WATER DISTRICT DATE

SHEET
5

JOB NO. 701.244
PLOTTED: 12/10/95 11:15 am DRAWING: CIVIL/UTILITY/049-5 BY: cwp

10-12-44 307Y-4141-49