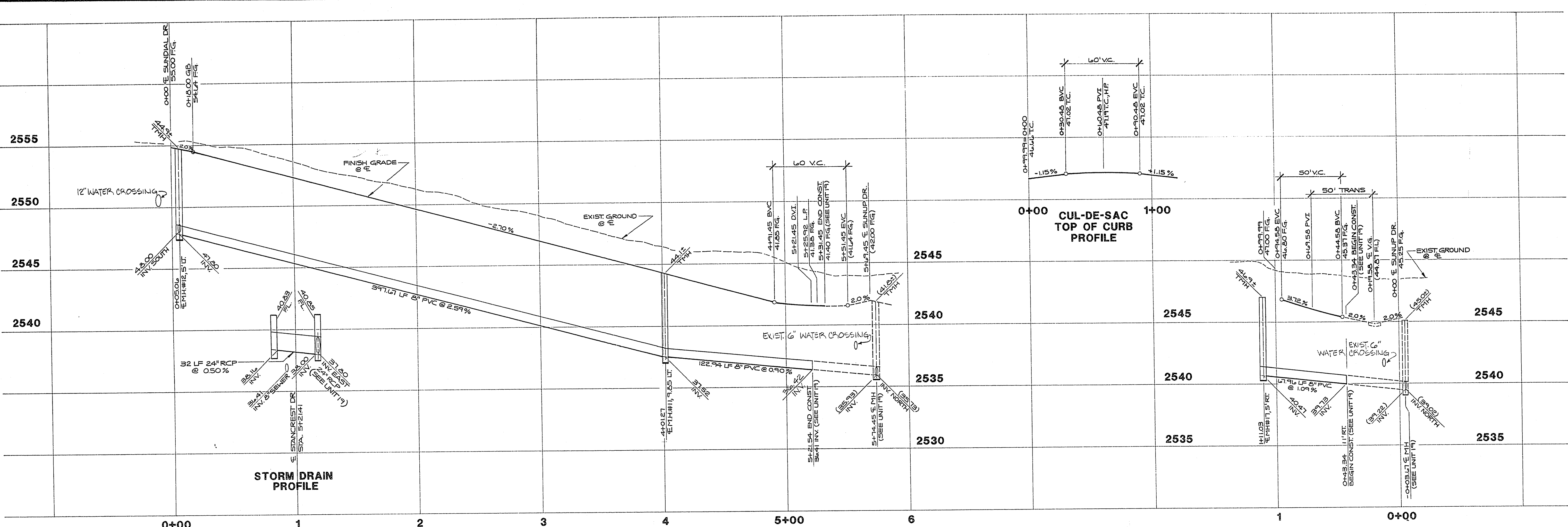
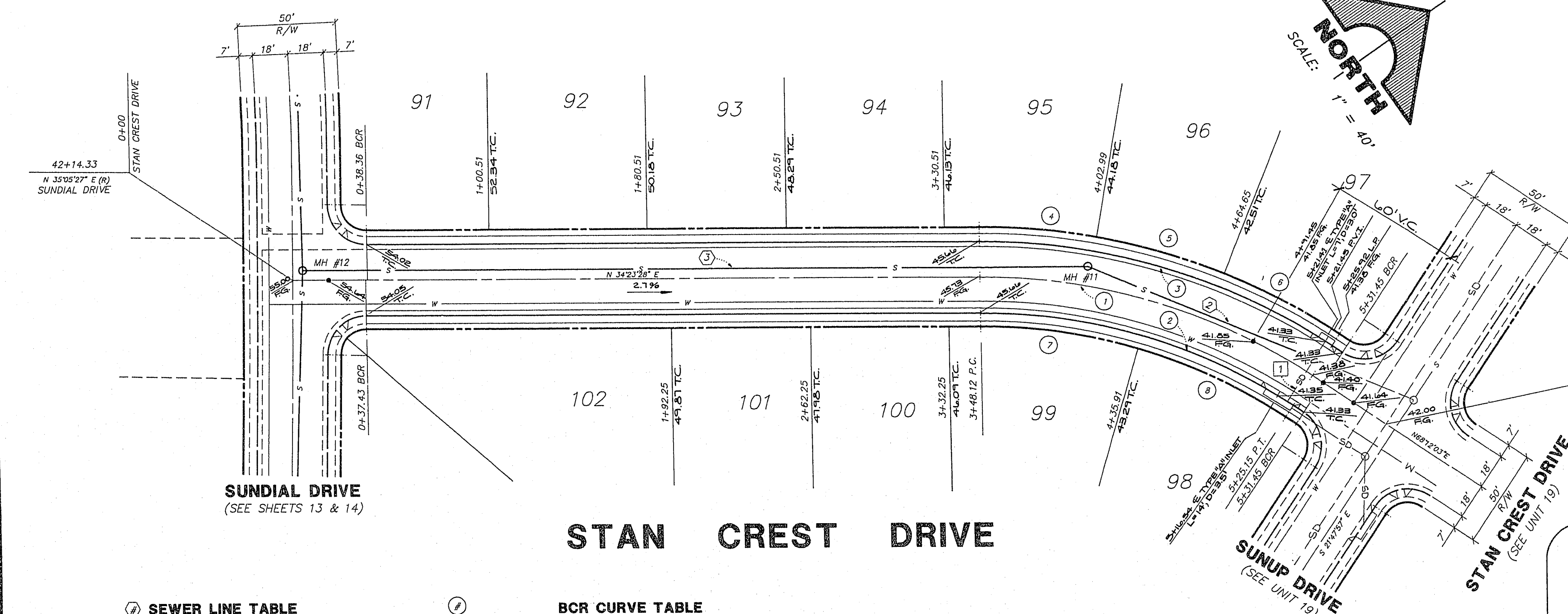
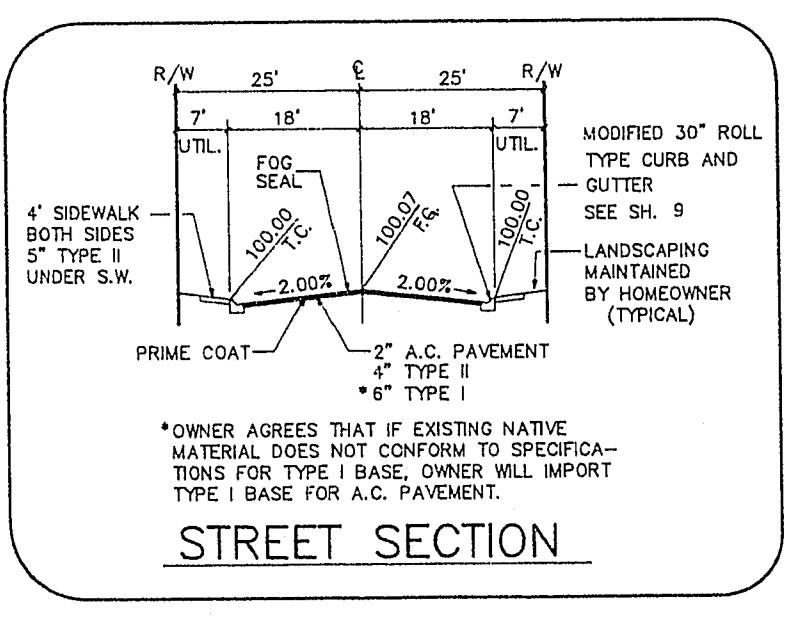


JOB NO. 701.079



PROFILE
SCALE: HORIZ. 1" = 40'
VERT. 1" = 4'



STAN CREST DRIVE

SEWER LINE TABLE

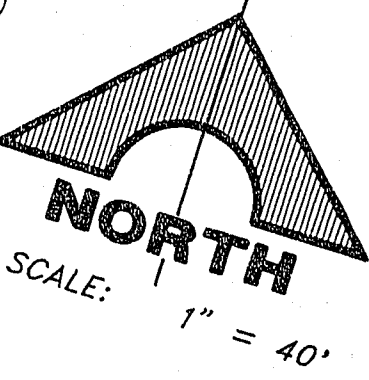
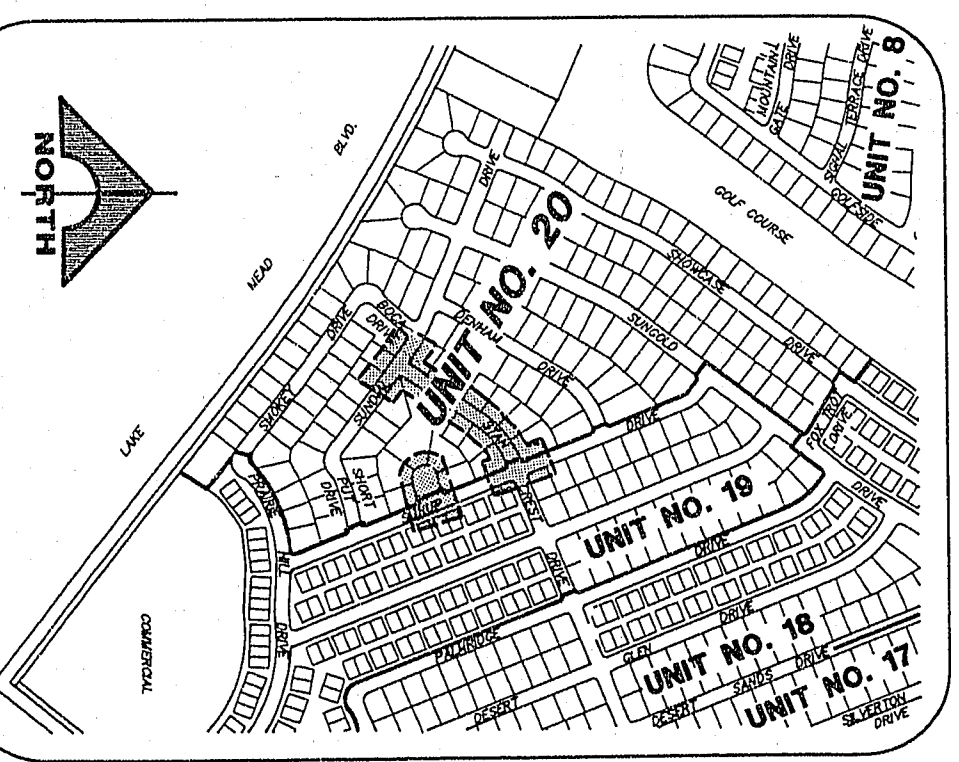
LINE	BEARING	DISTANCE
1	S 68°12'03" W	67.96'
2	N 57°06'14" E	122.94'
3	S 34°23'28" W	397.67'

BCR CURVE TABLE

CURVE	DELTA	RADIUS	LENGTH	TANGENT
1	33°48'35"	300.00'	177.03'	91.17'
2	33°48'35"	282.00'	166.41'	85.70'
3	33°48'35"	318.00'	181.65'	96.65'
4	10°28'47"	318.00'	58.16'	29.16'
5	11°46'33"	318.00'	65.36'	32.79'
6	17°33'19"	318.00'	64.13'	32.17'
7	16°45'55"	282.00'	82.52'	41.56'
8	17°02'39"	282.00'	63.89'	42.26'
9	180°00'00"	38.50'	120.95'	3.64'
10	05°28'17"	38.50'	3.64'	1.82'
11	57°43'32"	38.50'	38.79'	21.22'
12	62°18'08"	38.50'	41.88'	23.22'
13	54°33'04"	38.50'	36.68'	19.85'

STORM DRAIN LINE TABLE

LINE	BEARING	DISTANCE
1	N 22°30'47" W	36.00'



REV	DATE	DESCRIPTION

RECOMMENDED BY:
MICHAEL D. ROSS
REGISTERED PROFESSIONAL CIVIL ENGINEER
NO. 43181
STATE OF NEVADA

G.C. WALLACE, INC.
Engineering/Architecture

1555 SOUTH RAINBOW BOULEVARD, LAS VEGAS, NEVADA 89102

DEL E. WEBB COMMUNITIES, INC.
SUN CITY SUMMERLIN UNIT NO. 20
STAN CREST DRIVE
& SUNUP DRIVE

SHEET
12
OF 20 SHEETS

12-9-46

107Y-4003-20