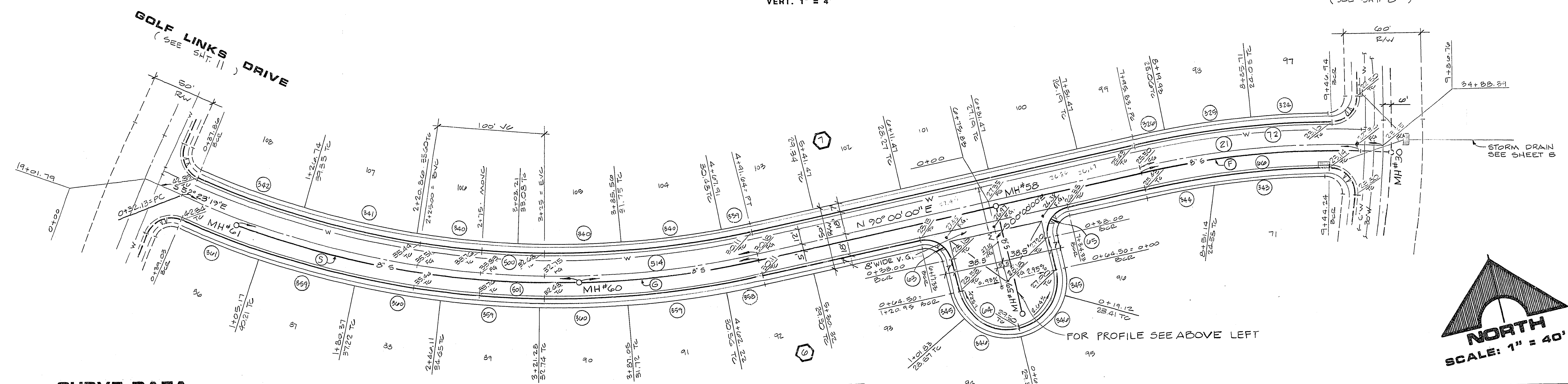


PROFILE
SCALE: HORIZ. 1" = 40'
VERT. 1" = 4'

CROWN RIDGE DR.
(SEE SHT. 8)



NORTH
SCALE: 1" = 40'

CURVE DATA

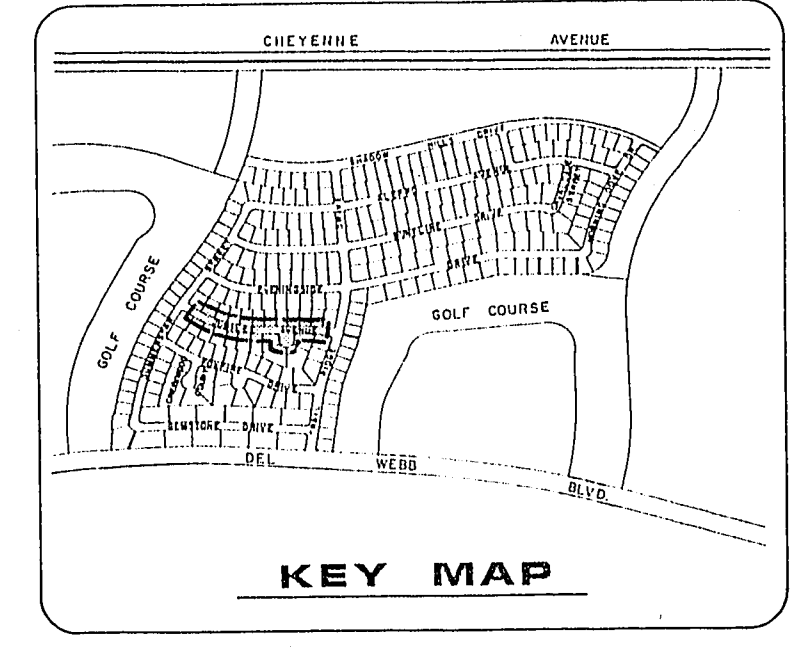
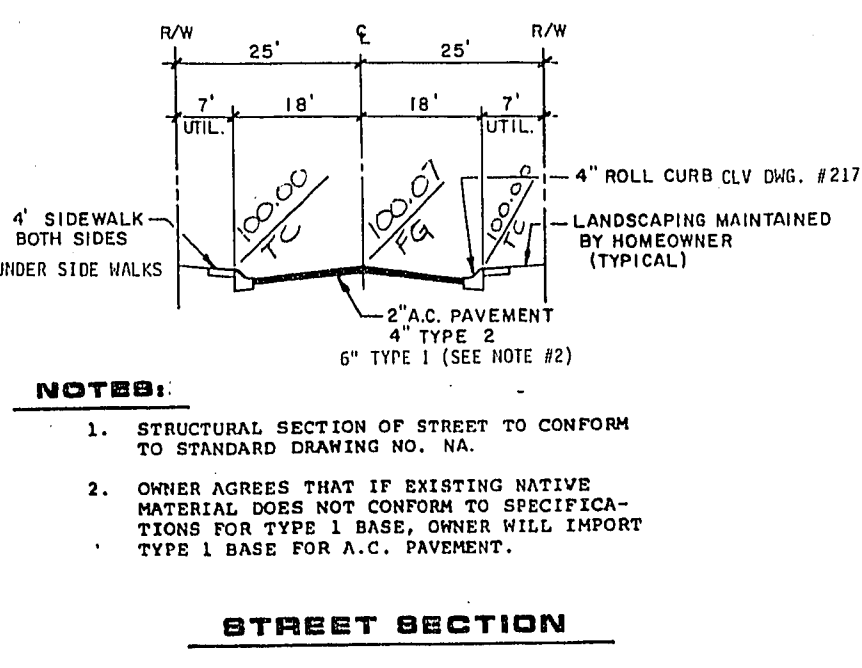
No	Δ	R	L	T
21	15° 37' 41"	700.00'	190.93'	90.06'
43	90° 00' 00"	20.00'	21.42'	20.00'
64	180° 00' 00"	38.50'	120.93'	0
65	90° 00' 00"	20.00'	31.42'	20.00'
66	12° 05' 53"	682.00'	144.60'	72.57'
72	12° 22' 03"	718.00'	153.00'	77.80'
324	05° 00' 43"	718.00'	02.81'	31.42'
325	05° 23' 01"	718.00'	07.46'	33.76'
326	01° 58' 24"	718.00'	24.73'	12.37'
329	01° 56' 32"	682.00'	23.12'	11.50'
340	04° 44' 26"	682.00'	80.23'	40.16'
341	07° 42' 13"	682.00'	91.70'	43.92'
342	07° 16' 30"	682.00'	80.60'	43.36'

CURVE DATA GRAYLING DRIVE

No.	Δ	R	L	T
343	07° 37' 13"	682.00'	90.71'	43.42'
344	04° 31' 40"	682.00'	53.89'	26.96'
345	28° 27' 26"	38.50'	19.12'	9.76'
346	61° 52' 34"	38.50'	41.34'	22.92'
358	02° 24' 31"	718.00'	30.18'	15.09'
359	04° 09' 09"	718.00'	77.10'	33.59'
360	05° 23' 01"	718.00'	07.46'	33.76'
361	05° 24' 48"	718.00'	07.84'	33.94'
500	37° 08' 33"	682.00'	442.11'	229.14'
501	37° 02' 48"	718.00'	464.25'	240.57'
514	37° 36' 41"	700.00'	459.51'	233.38'

SEWER CURVE DATA

NO.	Δ	R	L	T
F	14° 09' 15"	673.00'	171.69'	86.28'
G	11° 25' 48"	705.00'	140.64'	70.55'
S	22° 15' 48"	705.00'	273.94'	138.72'



RECOMMENDED	DATE	DESCRIPTION
MICHAEL D. ROSS	10/14/14	
REVISION	DATE	DESCRIPTION
DEL. E. WEBB COMMUNITIES, INC. SUN CITY SUMMERLIN UNIT NO. 4 GRAYLING DRIVE		
SHEET 13 OF 26 SHEETS		

G.C. WALLACE, INC.
Engineering/Architecture
1555 SOUTH RAINBOW BLVD. LAS VEGAS, NEVADA 89102

9.9.15 1074-4003-4