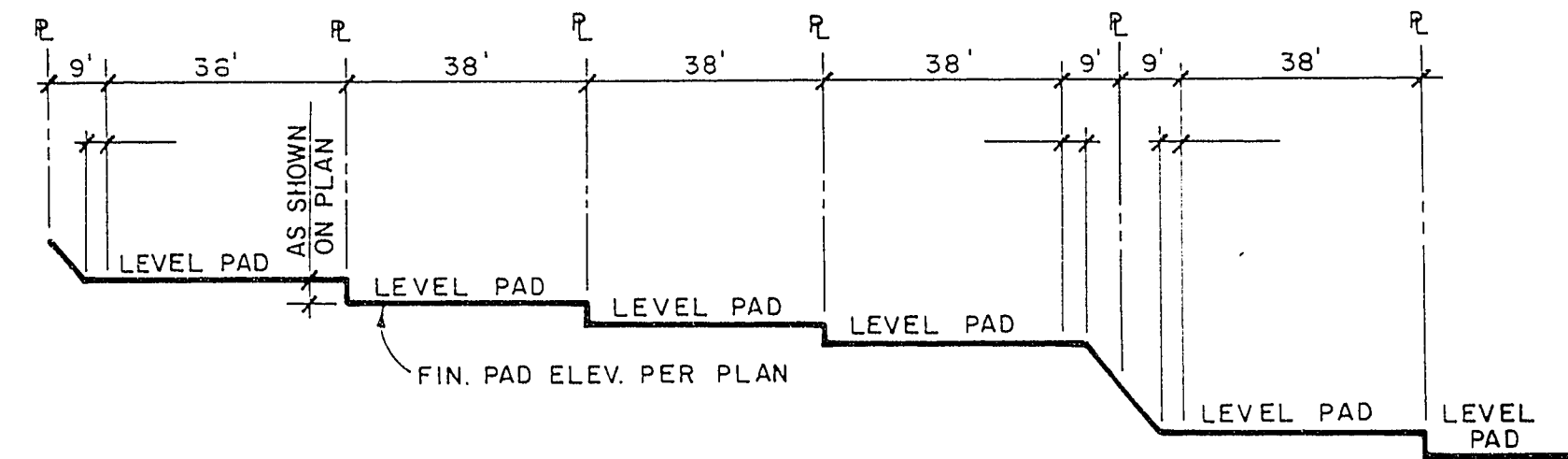
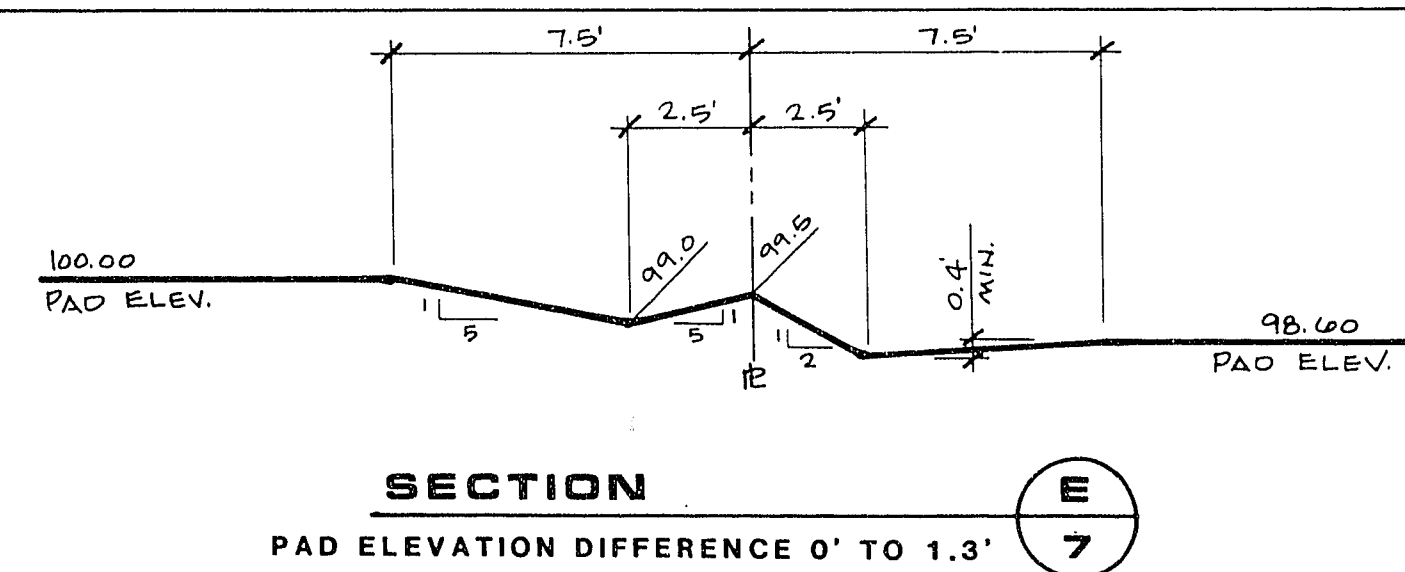


**TYPICAL "A" TYPE DRAINAGE**



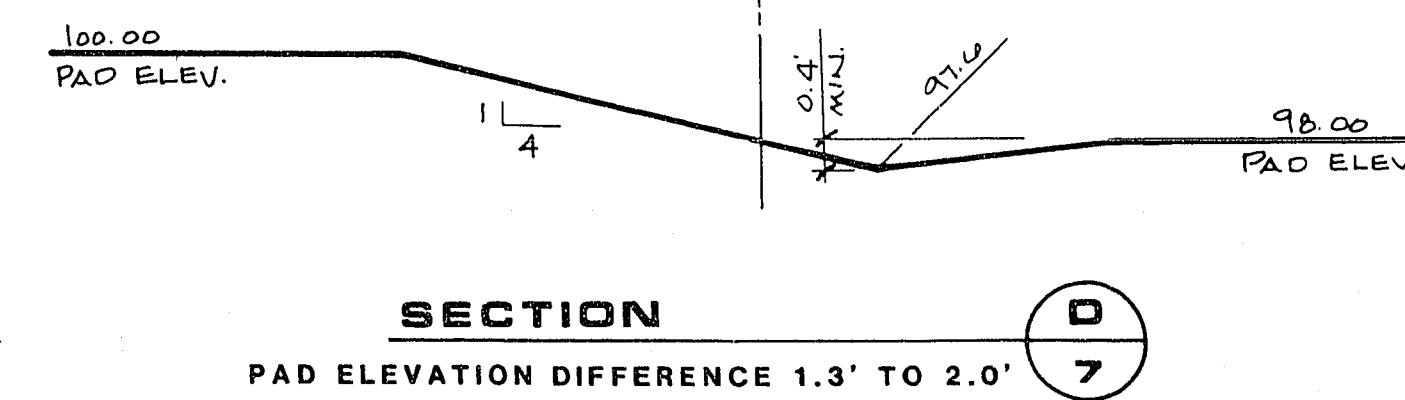
**TYPICAL SECTION**

PAD ROUGH GRADING PARALLEL WITH STREETS



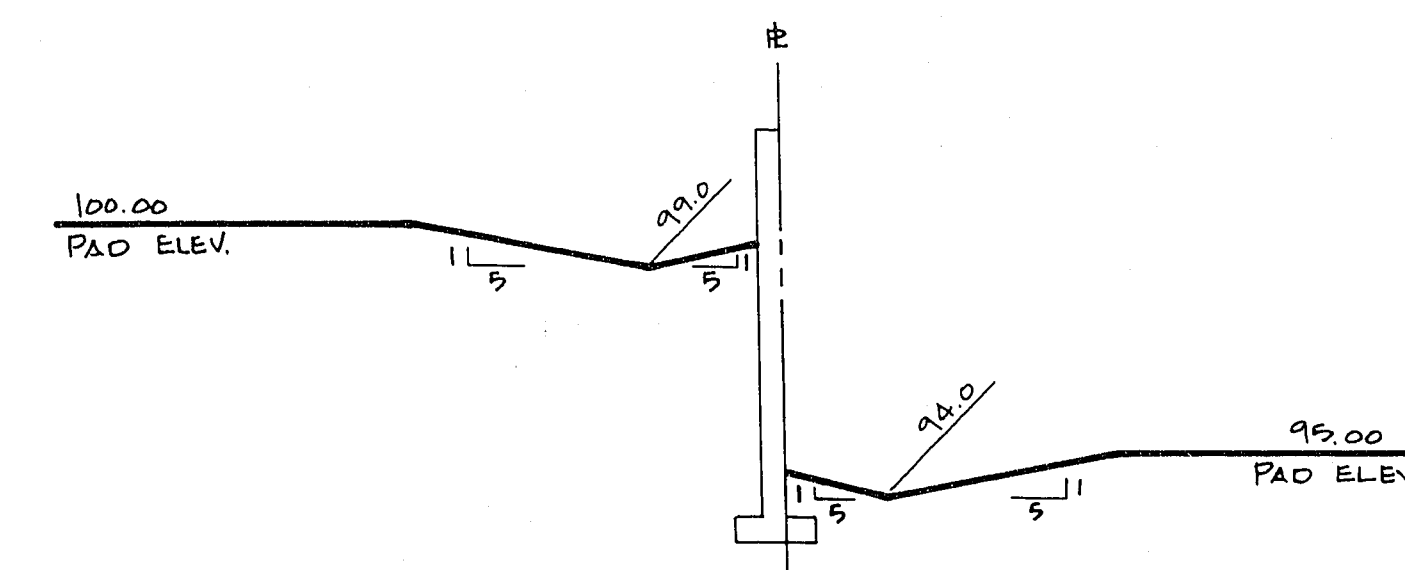
**SECTION E**

PAD ELEVATION DIFFERENCE 0' TO 1.3'



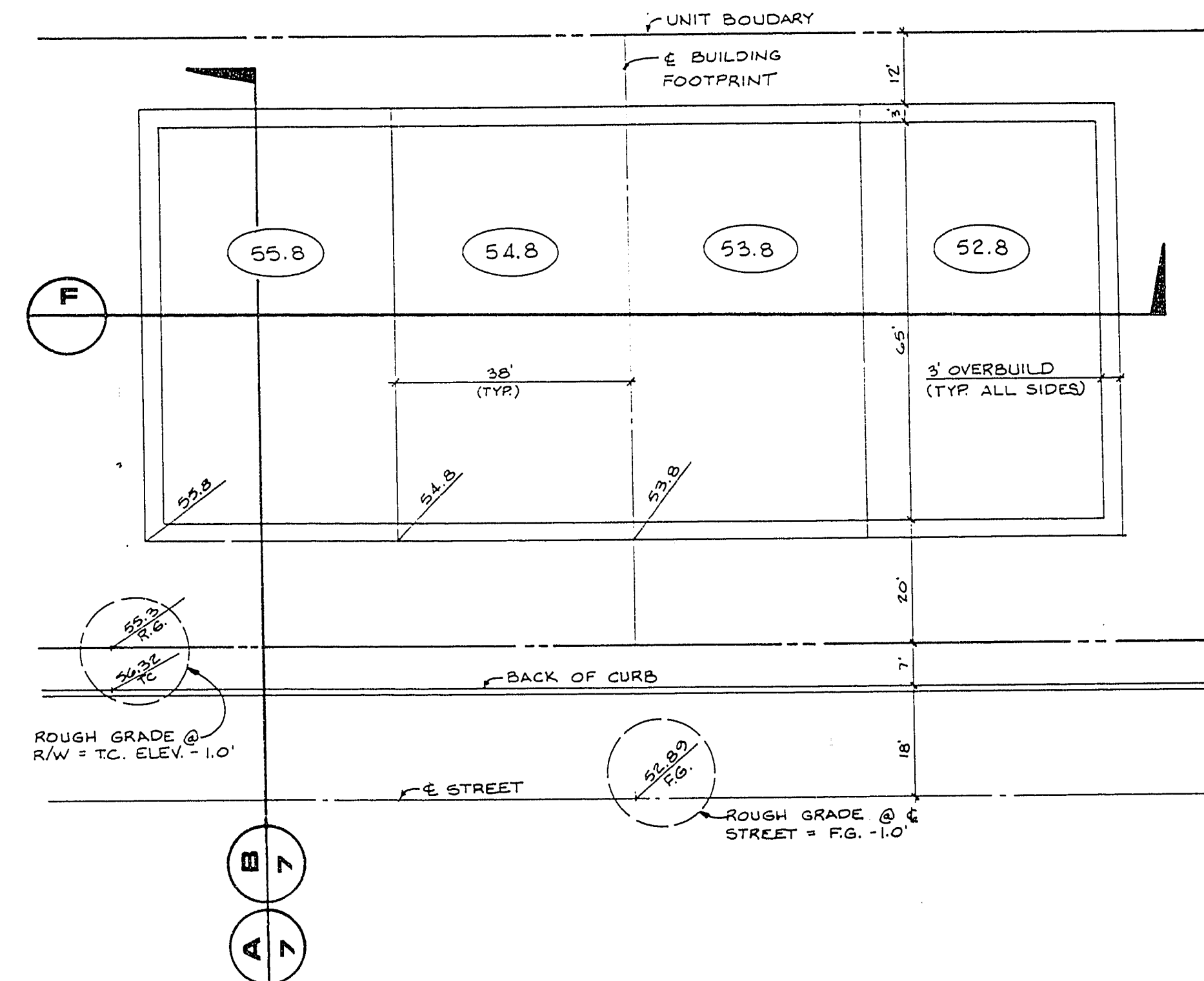
**SECTION D**

PAD ELEVATION DIFFERENCE 1.3' TO 2.0'

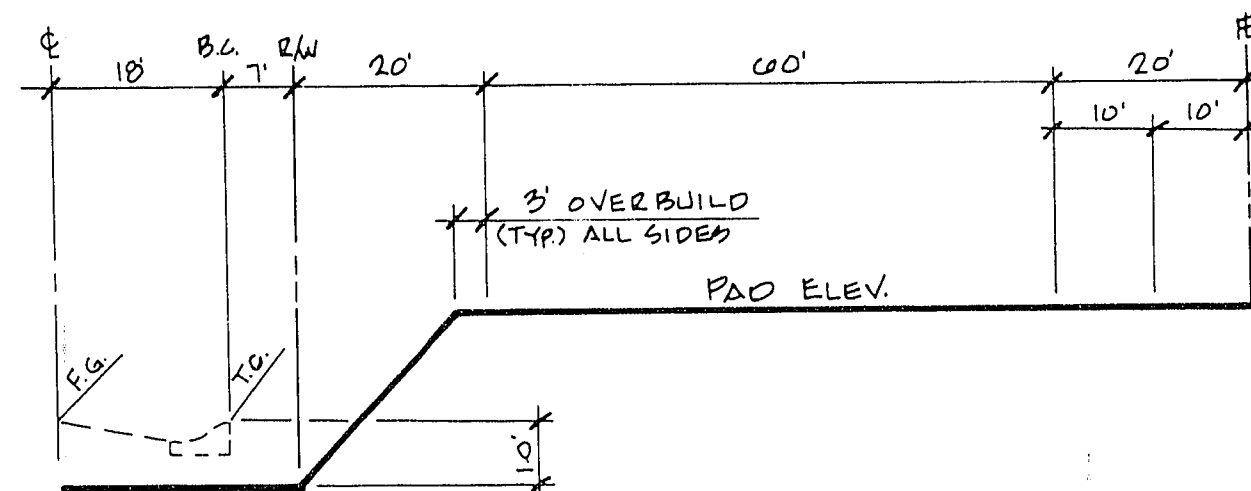


**SECTION C**

PAD ELEVATION DIFFERENCE GREATER THAN 2.0'  
**FINISHED GRADING SIDE YARD SECTIONS**



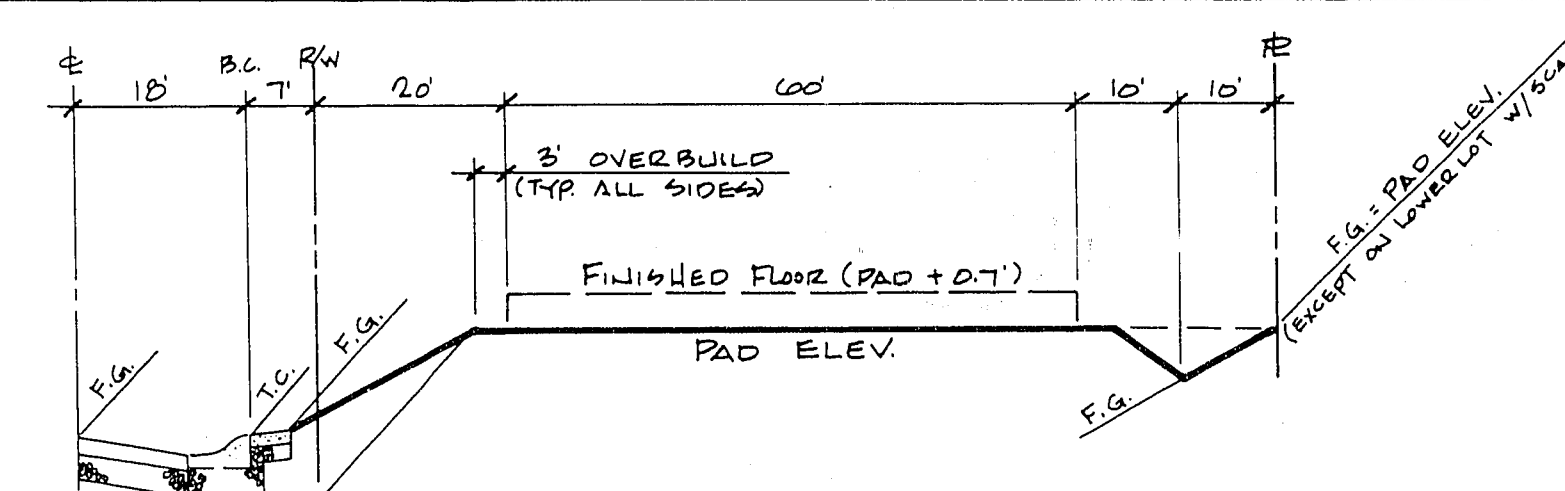
**ROUGH GRADING PLAN**



**NOTES:**

- ROUGH GRADE STREET 1.0' BELOW C OR T.C. TO R/W
- STRAIGHT GRADE FROM PAD OVERBUILD TO R/W LINE

**ROUGH GRADING SECTION**



**FINISHED GRADING SECTION**

**GRADING NOTES**

- INDICATED GRADES ARE FINISHED GRADES.
- THE ROUGH GRADING PLANS SHALL BE ON THE JOB SITE AT ALL TIMES. THE ROUGH GRADING SHALL BE FINISHED IN CONFORMANCE WITH THE LINES AND GRADES SHOWN ON THE PLANS. THE GRADING QUANTITIES ARE BASED ON THE ELEVATION AND ROUGH GRADING DETAILS SHOWN ON THE PLANS. ANY DEVIATIONS FROM THE PLANS WILL RESULT IN QUANTITY CHANGES.
- CARE SHALL BE EXERCISED IN GRADING CORNER LOTS.
- ROUGH PAD ELEVATIONS SHALL BE GRADED TO WITHIN 0.1' OF THE PAD ELEVATIONS SHOWN ON THE PLANS. WHEN GRADING IS COMPLETE PER THE PLANS, THE CONTRACTOR SHALL NOTIFY THE ENGINEER SO THAT THE LOTS CAN BE INSPECTED. AT THAT TIME THE ENGINEER SHALL ALSO DECIDE IF ANY ADDITIONAL DITCHES OR BERMS ARE REQUIRED. THE CONTRACTOR IS REQUESTED NOT TO REMOVE ANY OF HIS ROUGH GRADING EQUIPMENT UNTIL HE RECEIVES GRADING APPROVAL FROM THE ENGINEER.
- SOILS REPORT PREPARED BY WESTERN TECHNOLOGIES, INC. PROJECT NO. 4127J192 DATED SEPTEMBER 29, 1987.  
  
CLEARING AND GRUBBING OPERATIONS WILL RESULT IN SOME LOSS OF MATERIAL. EXCAVATION AND RECOMPACTION OF THE ONSITE SOILS WILL RESULT IN SHRINKAGE LOSSES. A SHRINKAGE FACTOR OF ABOUT 25 PERCENT IS ESTIMATED TO BE APPLICABLE FOR THE UPPER SOFT AND LOOSE TO MEDIUM DENSE DEPOSITS. A SHRINKAGE FACTOR OF ABOUT 5 TO 10 PERCENT SHOULD BE APPLICABLE FOR DENSE TO VERY DENSE DEPOSITS. THE CEMENTED DEPOSITS WILL HAVE A BULKAGE FACTOR WHEN EXCAVATED AND RECOMPACTION. AS AN EXAMPLE, A SHRINKAGE FACTOR OF 10 PERCENT WOULD MEAN IT WOULD REQUIRE 1.10 CUBIC YARDS OF EXCAVATED MATERIAL TO EQUAL 1.0 CUBIC YARD OF PROPERLY COMPACTED FILL. SUBSIDENCE OF THE SUBGRADE WHERE SOILS ARE SCARIFIED, WETTED AND RECOMPACTION WILL BE ON THE ORDER OF 0.1 FOOT OR LESS DEPENDING ON MATERIALS EXPOSED.  
  
THE ABOVE QUANTIFICATION IS FROM PAGE 13 OF THE REPORT UNDER MATERIAL VOLUME CHANGES.
- EARTH QUANTITIES:  
EXCAVATION 57,930  
FILL 46,680  
  
A) THE ABOVE QUANTITIES DO NOT REFLECT LOSSES DUE TO SUBSIDENCE OR SHRINKAGE.  
B) THE ABOVE QUANTITIES DO REFLECT USING TYPE 1 GRAVEL BASE MATERIAL FOR STREET SECTIONS.  
C) THE ABOVE QUANTITIES DO NOT REFLECT ANY EARTHWORK WHICH MAY BE REQUIRED BY THE ENGINEER TO CONSTRUCT ADDITIONAL PROTECTIVE DITCHES OR BERMS NOT SHOWN ON THESE DRAWINGS.

**ENGINEER'S EVALUATION OF GRADING QUANTITIES**

USING A SHRINKAGE FACTOR OF \_\_\_\_\_ AND SUBSIDENCE OF 0.1', AN ESTIMATE FOR THE GRADING IS SHOWN BELOW. PLEASE NOTE THAT THESE QUANTITIES ARE ONLY AN ESTIMATE. ACTUAL QUANTITIES MAY DIFFER FROM THE ESTIMATE DUE TO SOIL VARIATIONS IN THE FIELD. QUANTITIES FOR ADDITIONAL DITCHES & BERMS THAT MAY BE REQUIRED BY THE ENGINEER ARE NOT INCLUDED (SEE NOTE A-C ABOVE).

|                     | CUT | FILL |
|---------------------|-----|------|
| COMPUTED VOL.       |     |      |
| SUBSIDENCE (0.1')   |     |      |
| SUB-TOTAL SHRINKAGE |     |      |
| TOTAL IMPORT        |     |      |

**LEGEND**

- ① LOT NUMBER
- ① BLOCK NUMBER
- 60.0 PAD ELEVATION
- 60.0 EXISTING PAD ELEVATION
- 60.0 FUTURE PAD ELEVATION
- 60.0 FINISHED GRADE
- 60.0 EXISTING ELEVATION
- 10.0 FUTURE ELEVATION
- 9.1 FINISHED GRADE ELEVATION
- 10.0 GRADE BREAK
- 2:1 SCRAP
- DITCH OR SWALE
- EXISTING CONTOUR

**BENCHMARK**

CLV BENCH MARK: TOP OF CURB AT END OF CURB, WEST SIDE OF DURANGO DRIVE, 250' SOUTH OF WESTCLIFF BOULEVARD. ELEVATION: 2610.16

PROJECT BENCHMARK: BRASS CAP IN TOP OF 6" DIA. CONCRETE CYLINDER 490' WEST OF DEL WEBB BLVD. AT FUTURE B ST. N. 532105.5031 E. 584121.2223 ELEV. 2599.855

Call before you Dig.  
1-800-227-2600