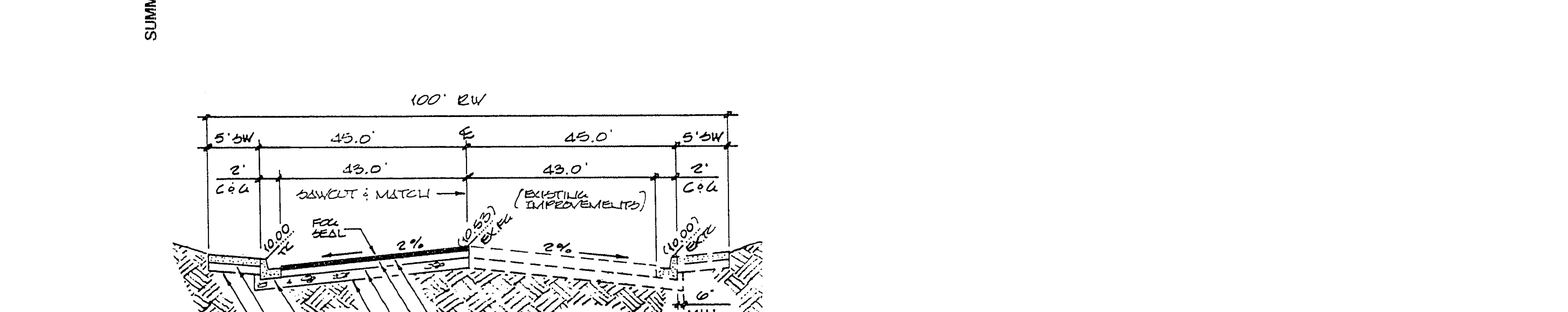
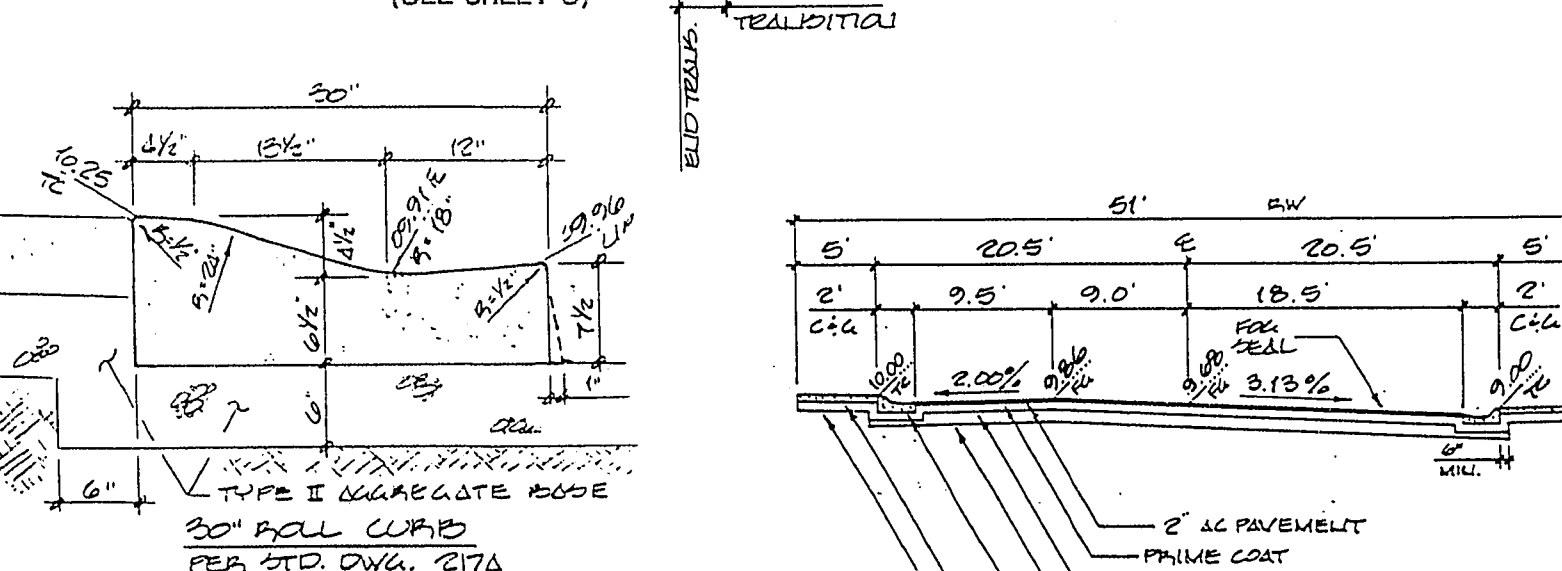
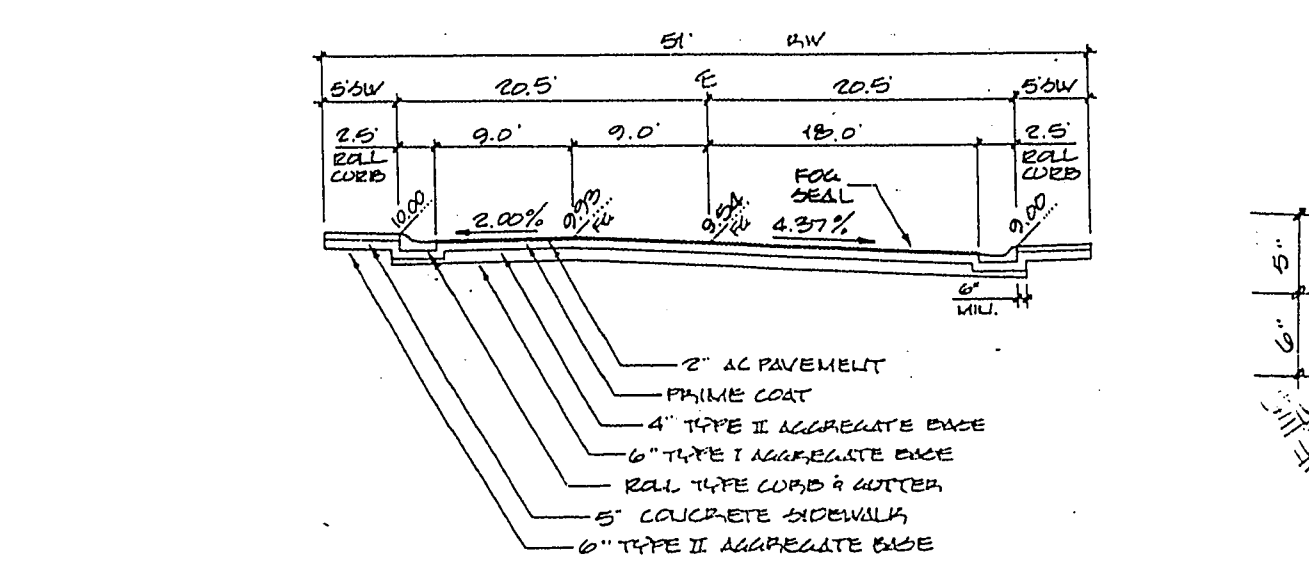
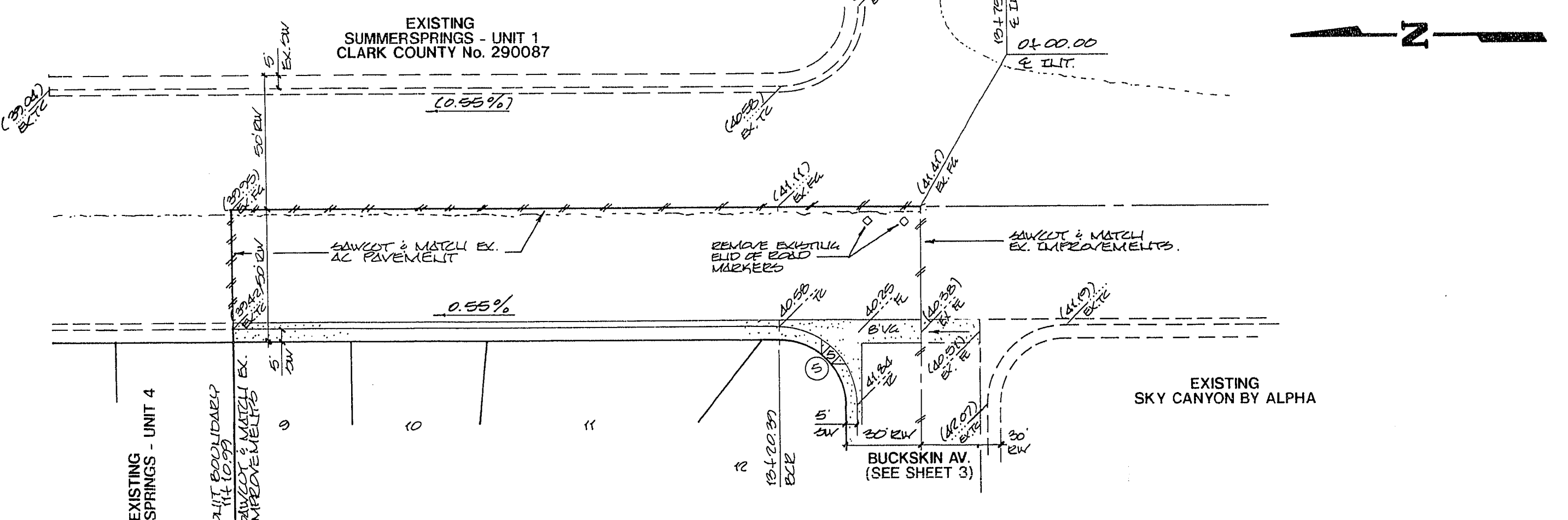
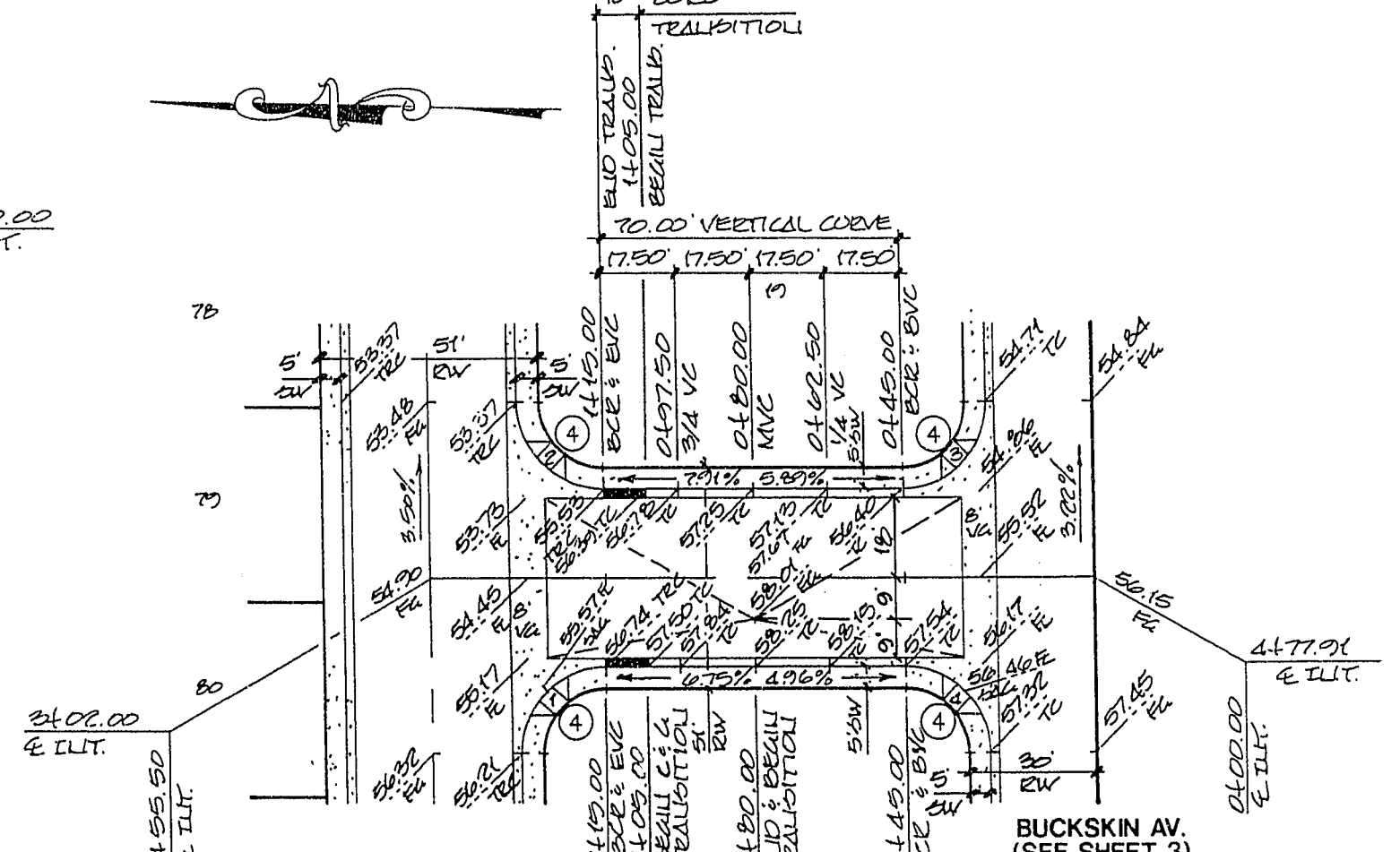
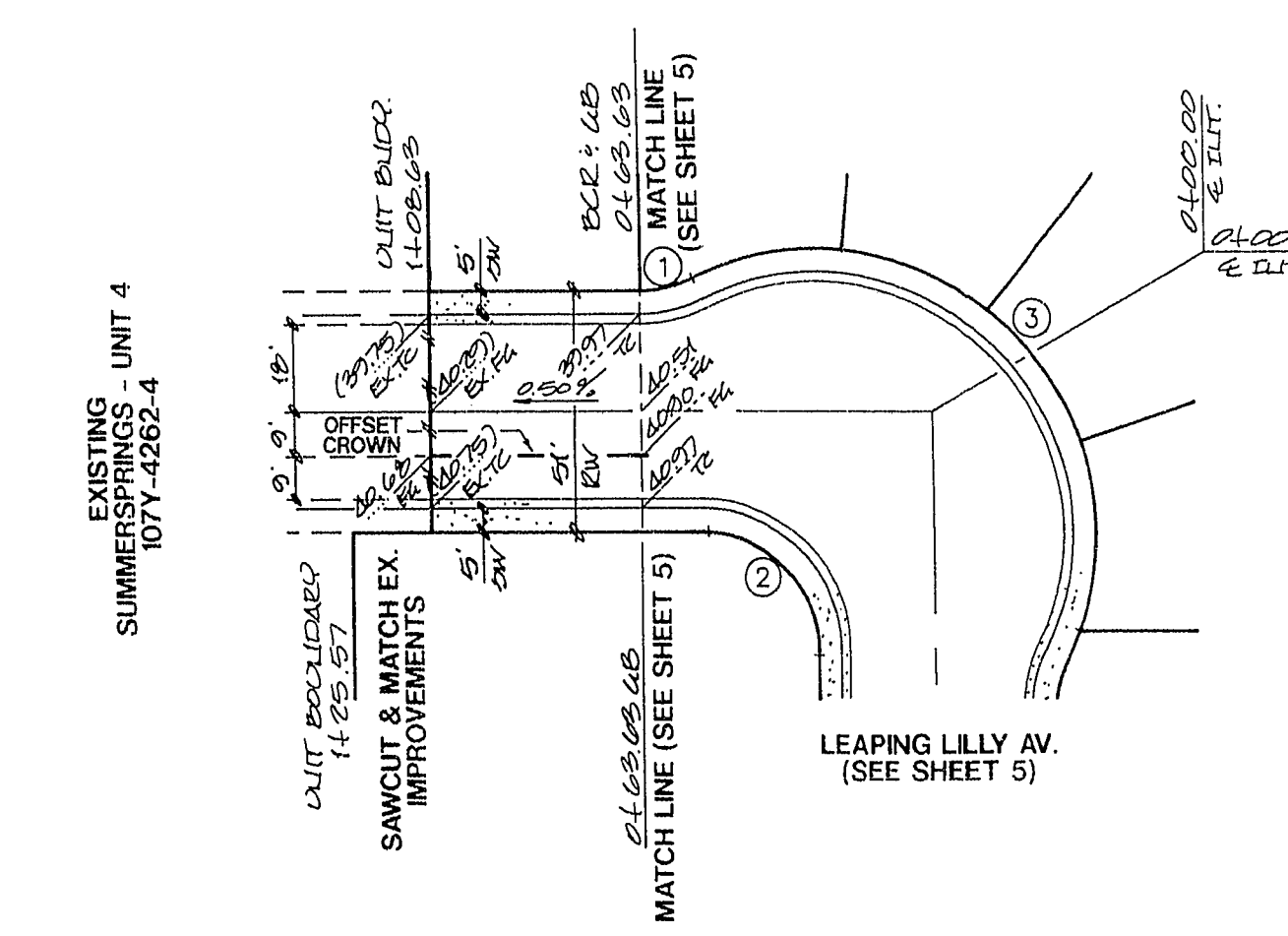


**GOLDEN PEDAL STREET**

**GOLDEN MEADOW STREET**

**FORT APACHE ROAD**



**BACK OF CURB CURVE DATA**

CURVE	RADIUS	LENGTH	TANGENT	DELTA
1	30.00'	43.83'	7.09'	26°36'17"
2	30.00'	47.20'	30.08'	90°09'06"
3	55.00'	137.62'	166.12'	143°21'40"
4	20.00'	31.42'	20.00'	90°00'00"
5	30.00'	47.20'	30.08'	90°09'06"

**SIDEWALK RAMP**  
CASE #1 - PER STD. DWG. NO. 235

NO.	A'	B'
1	2.0'	2.0'
2	4.5'	21.5'
3	21.5'	4.5'
4	2.0'	2.0'
5	2.5'	4.5'

**BENCHMARK**  
RIVET AND PLATE IN TOP OF CURB, SOUTHWEST  
RETURN OF CHEYENNE AVENUE AND RAMPART BLVD.  
CLV BM # 01V0017015  
ELEVATION = 2448.333

2 working days  
**Call before you Dig**

1-800-227-2800

CONSULTING ENGINEERS • LAND SURVEYORS  
2727 SOUTH RAINBOW BOULEVARD  
LAS VEGAS, NEVADA 89102-5148 PHONE (702) 873-7550 FAX (702) 362-2597

vtm nevada

**STREET PLAN - PROFILE**  
GOLDEN PEDAL STREET, GOLDEN MEADOW STREET, & FORT APACHE ROAD

**SUMMERSPRINGS UNIT 6**

NO. 4428-6  
BY **RJR**  
DATE **AUG, 1994**  
SCALE **HORIZ: 1"=40'**  
**VERT: 1"=4'**  
SHEET **4** OF 7 SHEETS

10-30-73 1074-4262-6