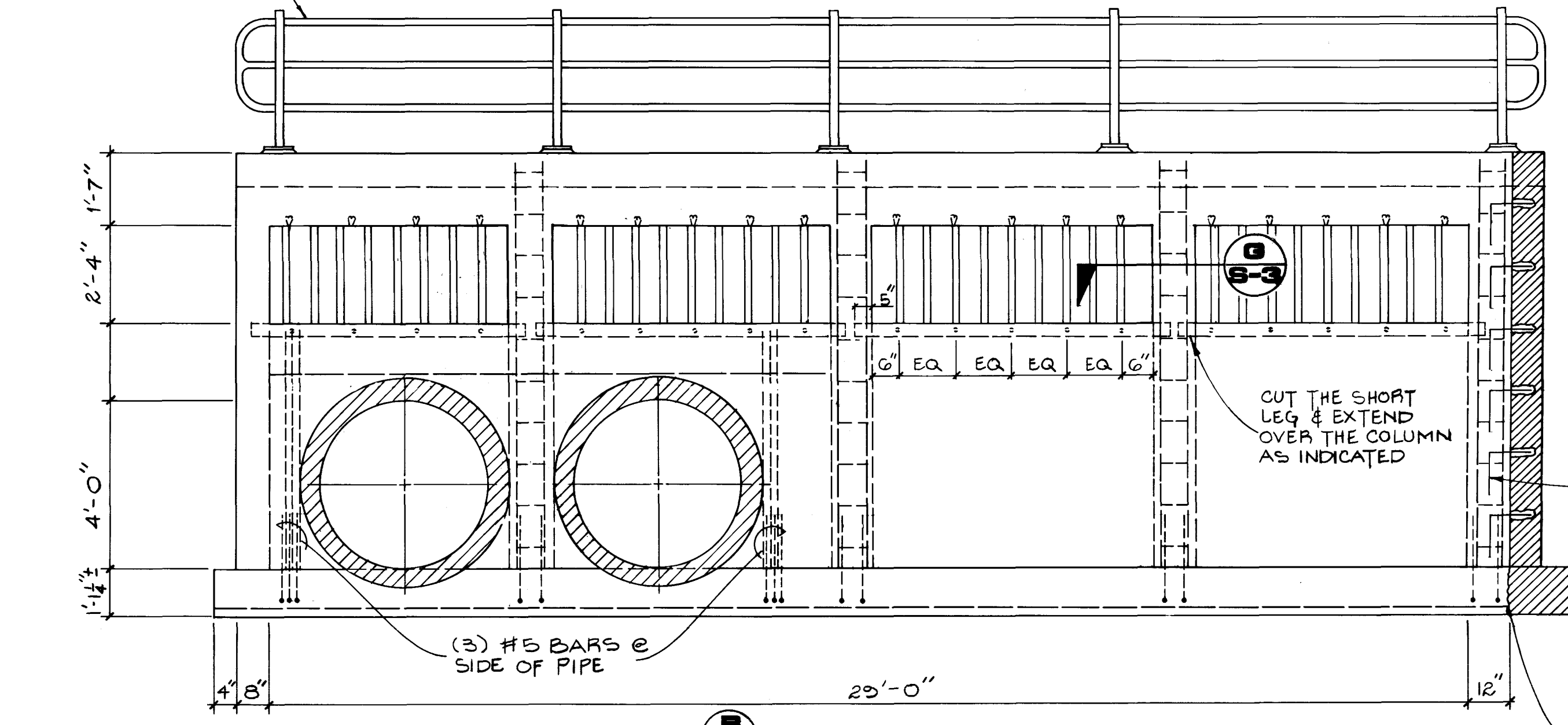
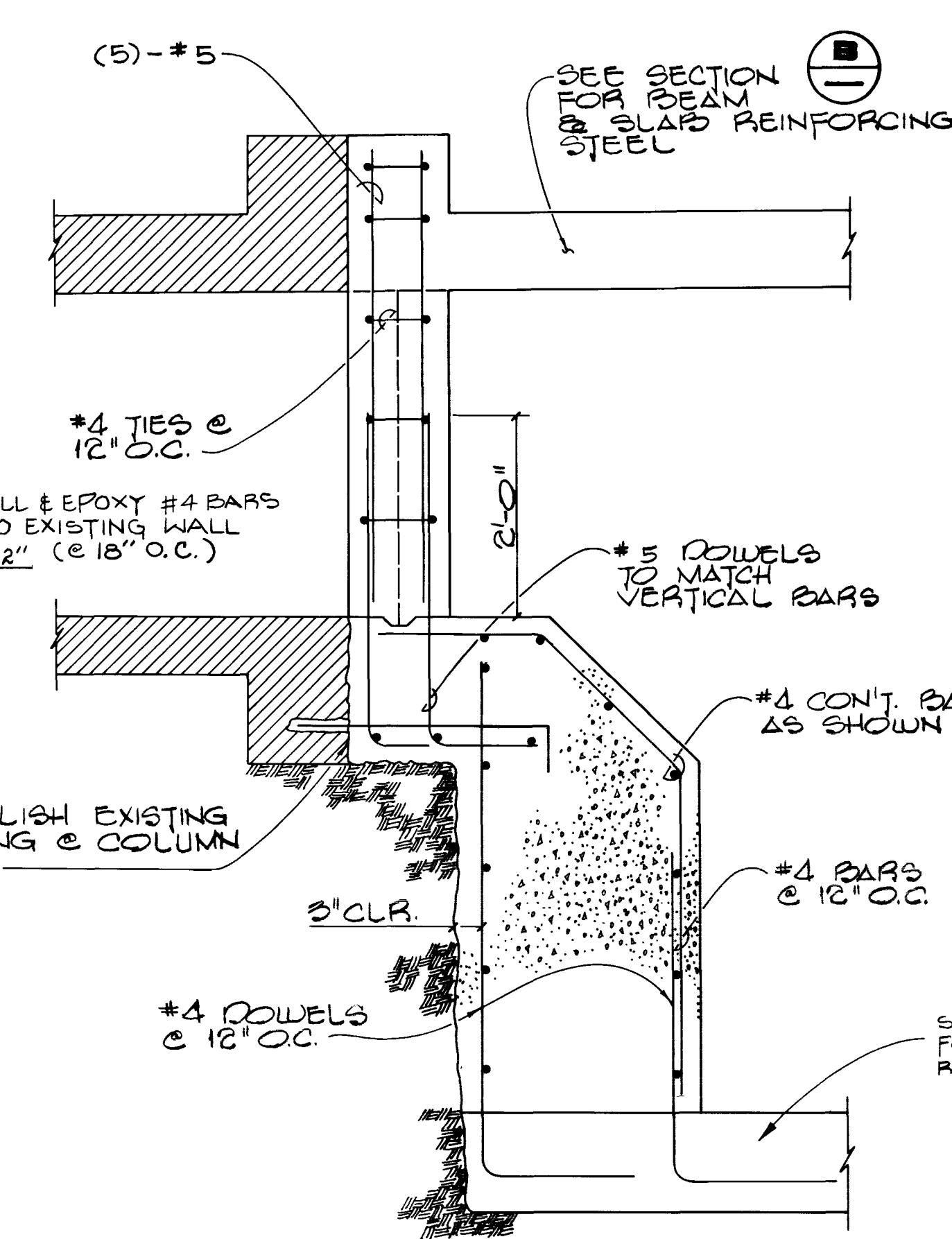


**PLAN**  
3/8" : 1'-0"

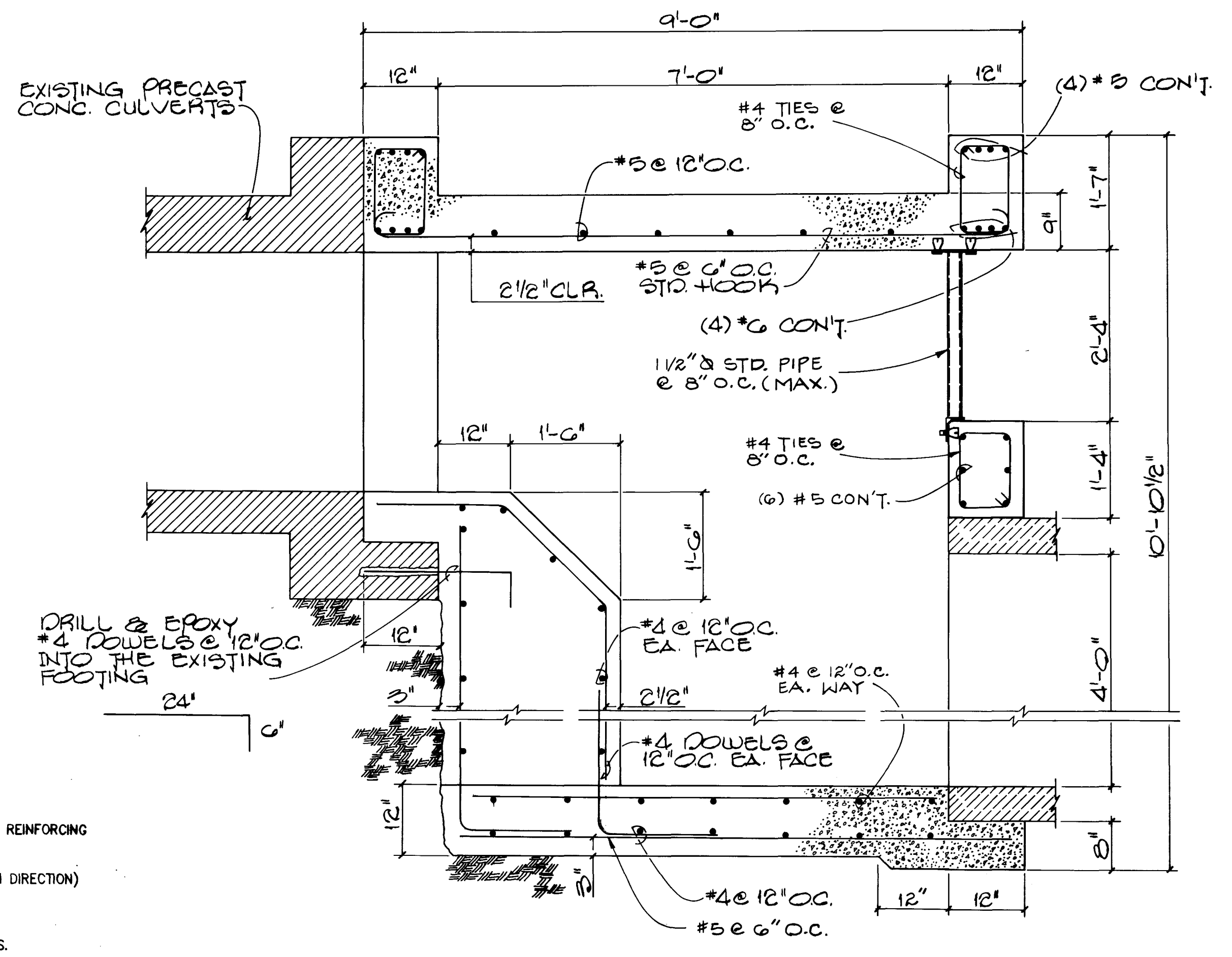
7'-0" O.T. STD. PEDESTRIAN  
GRIP (STEEL) TYPE "A"  
0-2'-0" O.T. STD. DWG.  
0-25.1.3



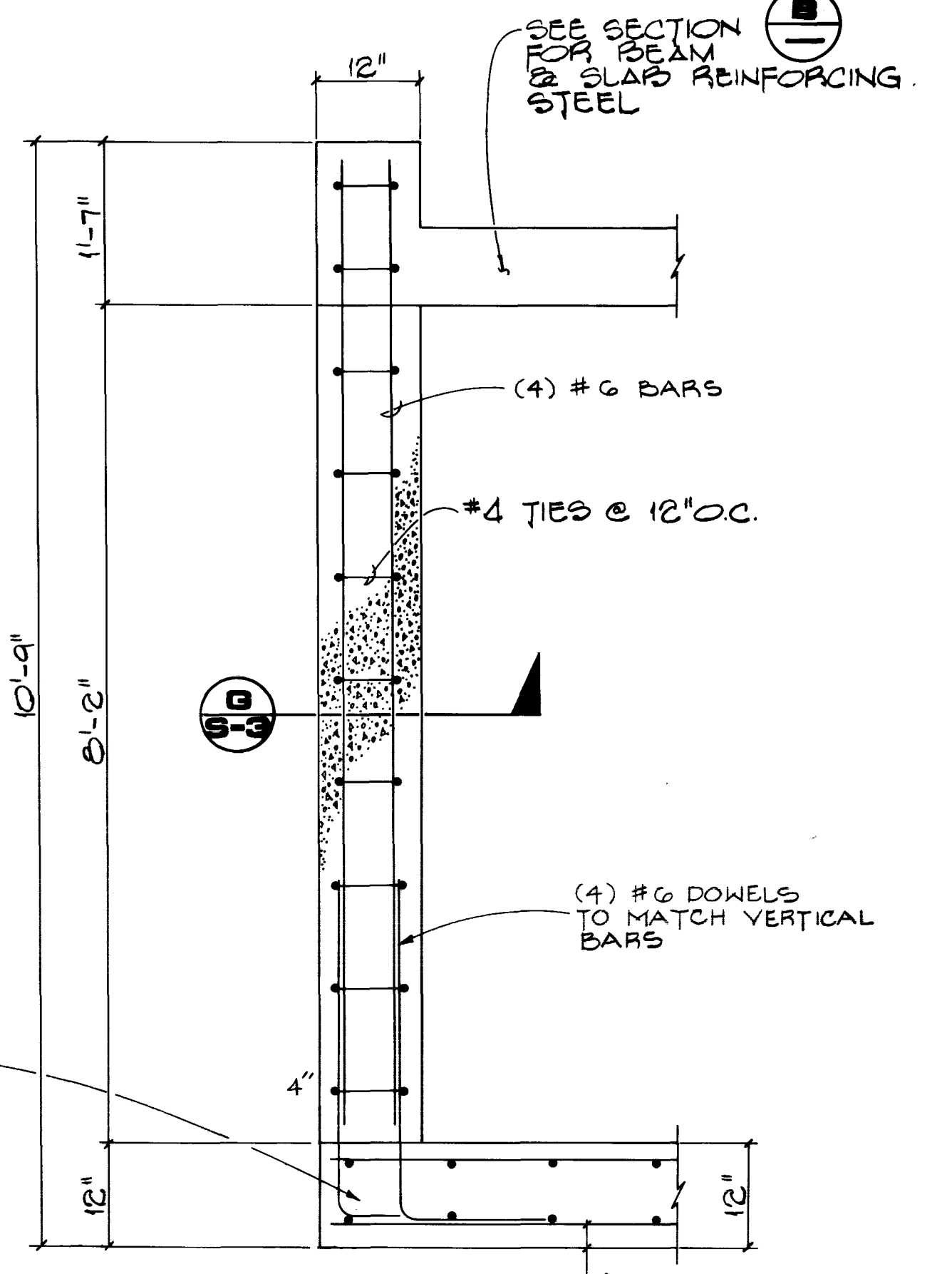
**SECTION A-A**  
3/8" : 1'-0"



**SECTION B-B**  
3/4" : 1'-0"



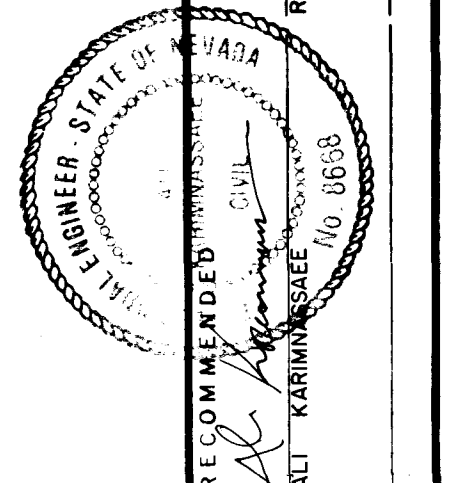
**SECTION C-C**  
3/4" : 1'-0"



**SECTION D-D**  
3/4" : 1'-0"

**NOTES:**

- UNLESS OTHERWISE SHOWN, CLEARANCE FOR ALL REINFORCING SHALL BE 2".
- ALL EXPOSED EDGES SHALL HAVE 1" (3/4" EACH DIRECTION) CHAMFERS.
- STEEL IS ASTM A615, GRADE 60 CONCRETE SHALL DEVELOP 3000 PSI AT 28 DAYS.
- DESIGN IS FOR HS20 LOADING.
- REFERENCE TO "STANDARD DRAWINGS" REFERS TO "SUMMERLIN IMPROVEMENT STANDARDS".
- ALL STEEL SHALL BE "HOT DIPPED" GALVANIZED AFTER FABRICATION.



**G.C. WALLACE, INC.**  
Engineering/Architecture  
1555 SOUTH RAINBOW BLVD., LAS VEGAS, NEVADA 89102

**HOWARD HUGHES PROPERTIES**  
**SUMMERLIN-VILLAGE 1 NORTH**  
DRAINAGE CHANNEL BETWEEN PARCEL H & PARCEL I  
OUTLET STRUCTURE @ GLENDSIDE DRIVE

SHEET  
**S-1**  
OF 8 SHEETS

JOB NO. 620.3149D

