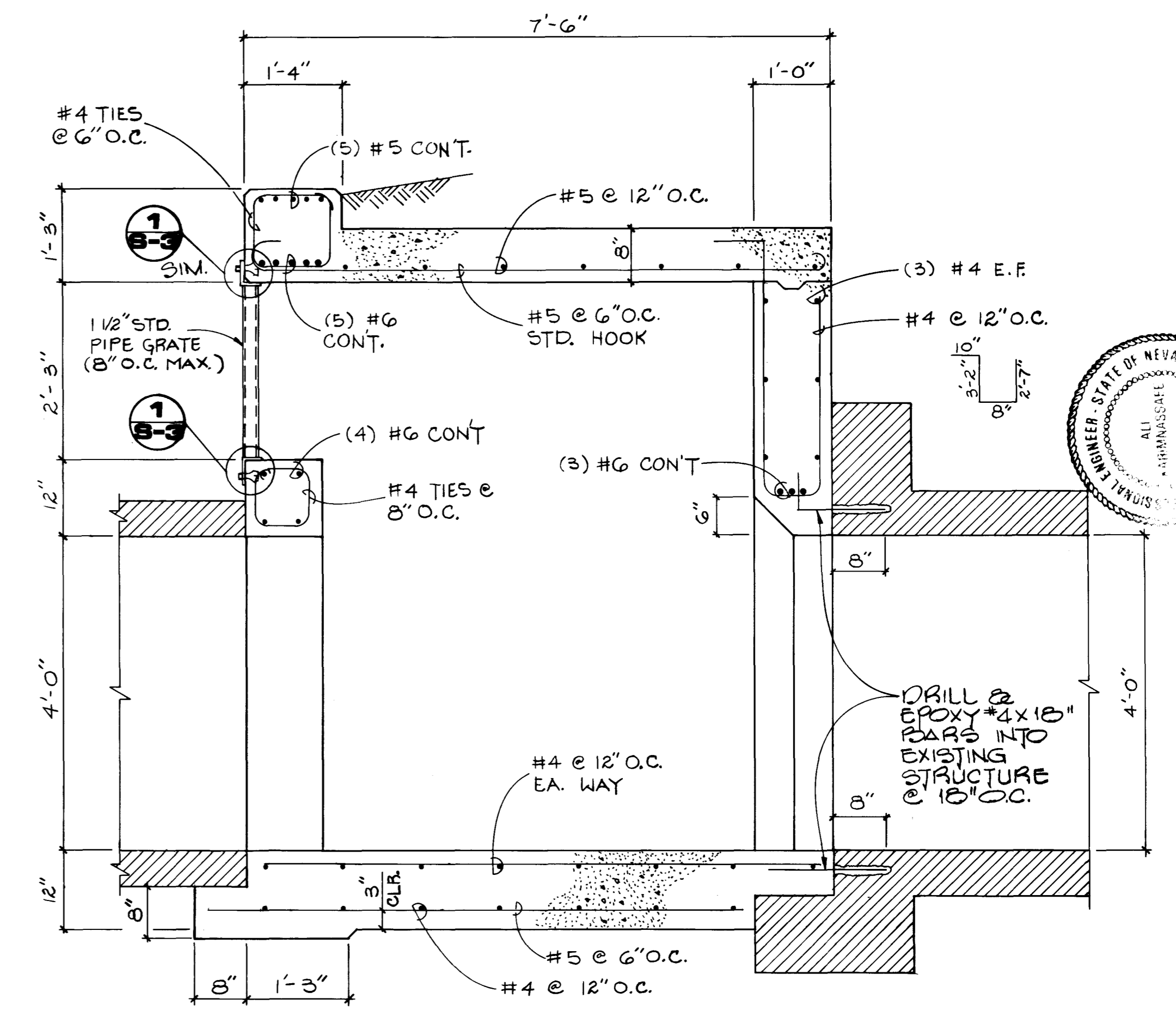


PLAN
3/8":1'-0"

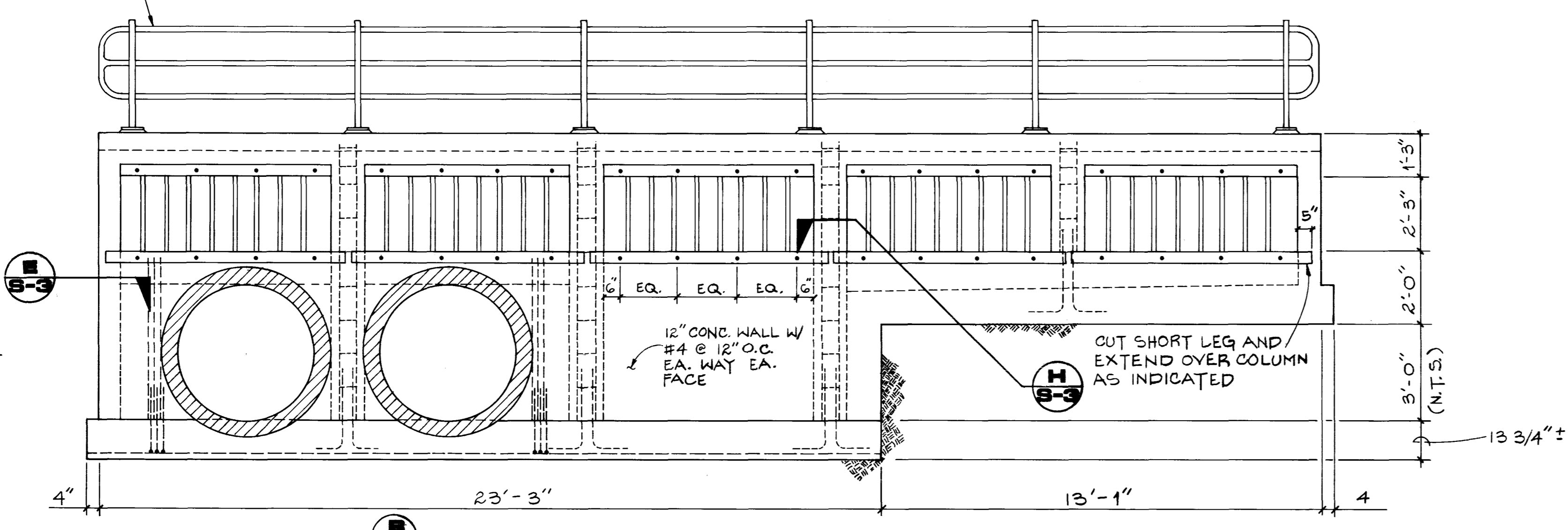
NOTES:

- UNLESS OTHERWISE SHOWN, CLEARANCE FOR ALL REINFORCING SHALL BE 2".
- ALL EXPOSED EDGES SHALL HAVE 1" (3/4" EACH DIRECTION) CHAMFERS.
- STEEL IS ASTM A615, GRADE 60 CONCRETE SHALL DEVELOP 3000 PSI AT 28 DAYS.
- DESIGN IS FOR HS20 LOADING.
- REFERENCE TO "STANDARD DRAWINGS" REFERS TO "SUMMERLIN IMPROVEMENT STANDARDS"
- ALL STEEL SHALL BE "HOT DIPPED" GALVANIZED AFTER FABRICATION.

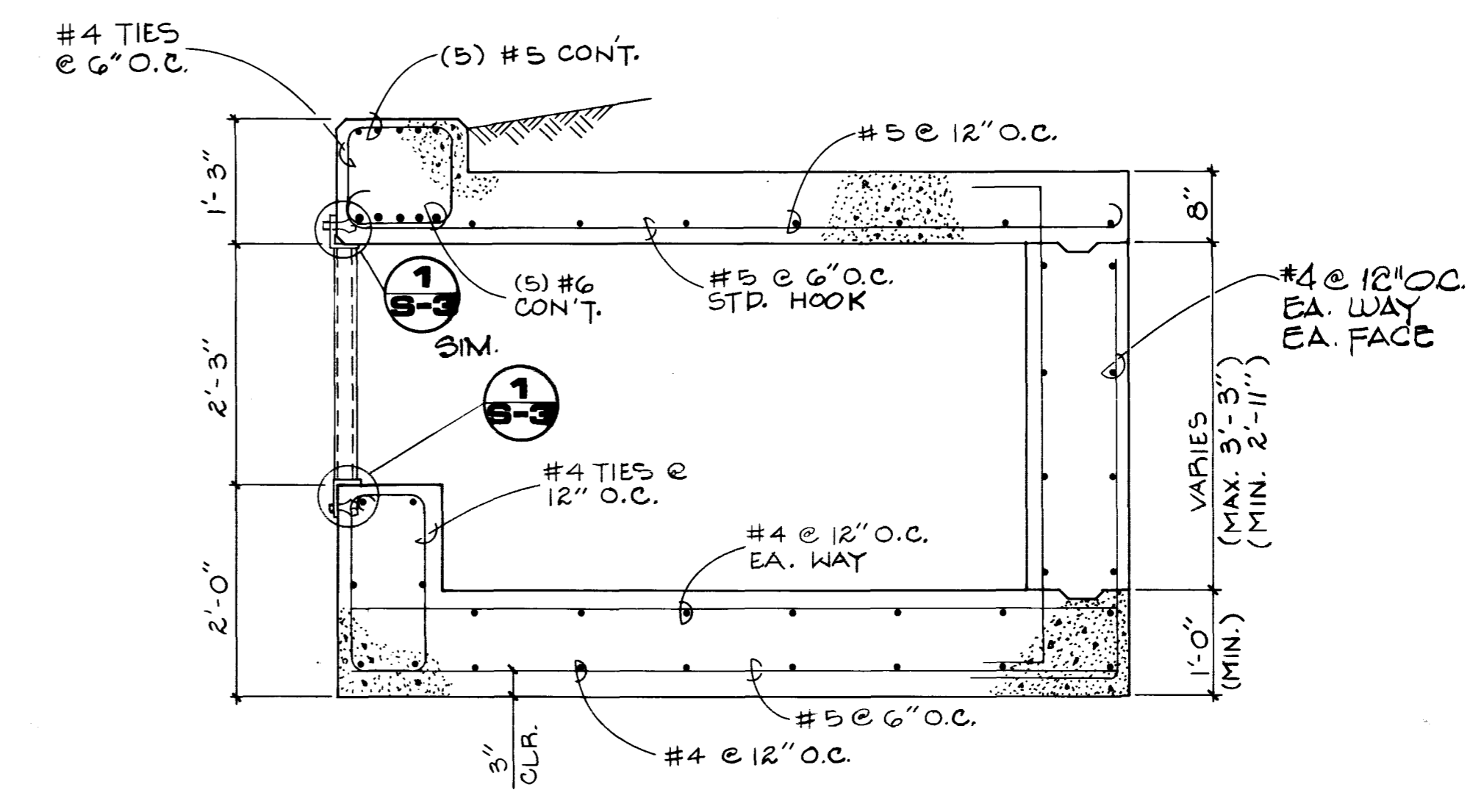


SECTION
3/4":1'-0"

N.D.O.T. STD. PEDESTRIAN RAIL (STEEL) TYPE "R" SEE N.D.O.T. STD. DWG. NO. B-25.1.5



SECTION
3/8":1'-0"



SECTION
3/4":1'-0"

REV	DATE	DESCRIPTION
1	11/8/10	ISSUED TO CONSTRUCT
2	8/8/10	REVISION
3		

RECORDED & INDEXED
ALI KARIMASSA
REGISTERED PROFESSIONAL ENGINEER
STATE OF NEVADA
ALI KARIMASSA
8888
R.E. NO. DATE

1555 SOUTH RAINBOW BLVD., LAS VEGAS, NEVADA 89102

G.C. WALLACE, INC.
Engineering/Architecture

HOWARD HUGHES PROPERTIES
SUMMERLIN-VILLAGE 1 NORTH
DRAINAGE CHANNEL BETWEEN PARCEL H & PARCEL I
INLET STRUCTURE @ LAKE MEAD BLVD.

SHEET
S-2
OF 8 SHEETS

JOB NO. 620.3148D

3688

