

CURVE DATA			
NO.	DELTA	RADIUS	LENGTH
1	180°00'00"	6.33'	19.89'

CONSTRUCTION NOTES

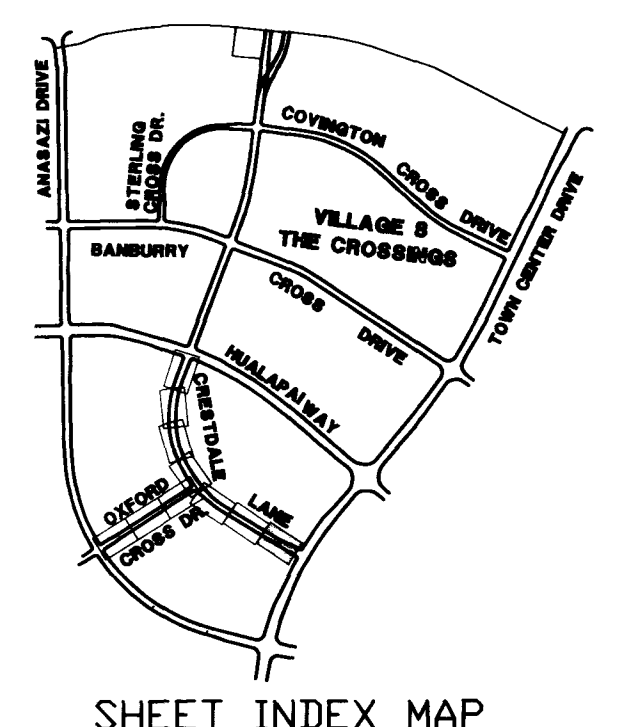
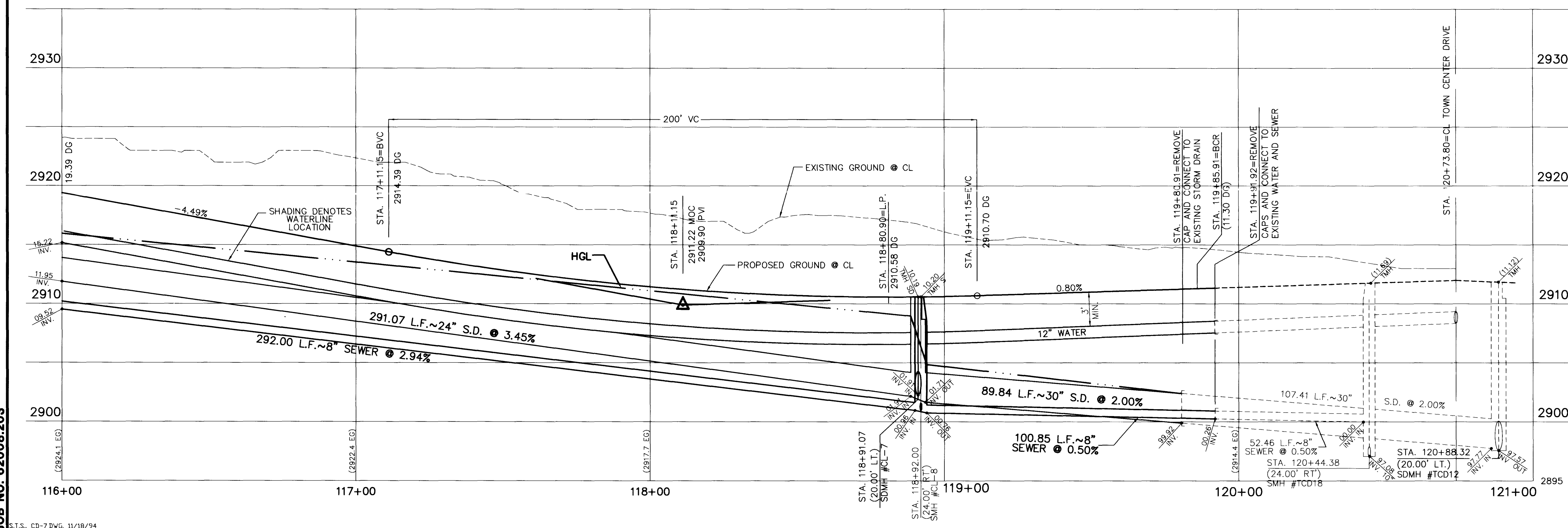
- IMPROVEMENTS**
- 1 INSTALL "L" TYPE CURB & GUTTER (S-47)
 - 2 INSTALL AC PAVEMENT PER STREET SECTIONS SHEET NO. 18
- SEWER**
- 1 INSTALL 8" SEWER PIPE (U-20)
 - 2 INSTALL SEWER MANHOLE (SD1-8)
- WATER**
- 1 INSTALL 12" WATER PIPE (U-20)
 - 2 INSTALL 8" WATER PIPE (U-20)
 - 3 INSTALL CONC. ENCASEMENT (11)
 - 4 INSTALL 6" FIRE HYDRANT AND ASSEMBLY (19)
 - 5 INSTALL 8" GATE VALVE (U-34)
 - 6 INSTALL TEMP. 2" BLOWOFF ASSEMBLY (S)
 - 7 INSTALL 2" TAP AND FUTURE METER (S)
 - 8 INSTALL 12" X 12" X 8" TEE (S)
 - 9 INSTALL 12" GATE VALVE (U-34)
- STORM DRAIN**
- 1 INSTALL 30" STORM DRAIN PIPE (1350-D) (U-20)
 - 2 INSTALL 24" STORM DRAIN PIPE (1350-D) (U-20)
 - 3 INSTALL TYPE II STORM DRAIN MANHOLE (B2.3A) (S)
 - 4 INSTALL TYPE "A" DROP INLET (S)
- STREET LIGHTING**
- 1 STREET LIGHT OR COMMON TRENCH, SEE ELECTRICAL PLANS
 - 2 INSTALL STREET LIGHT, SEE ELECTRICAL PLANS (E-2)
- IRRIGATION**
- 1 BANK "B", 2-4" SDR35 PVC
 - 2 BANK "C", 1-6" AND 3-4" SDR35 PVC

APPROVAL: _____ DATE: _____

REVISION: _____ DATE: _____

REGISTERED PROFESSIONAL ENGINEER - STATE OF NEVADA
 BERT A. HUGHES
 CIVIL
 10255 W. LAS VEGAS BLVD., SUITE 100, LAS VEGAS, NEVADA 89135

G.C. WALLACE, INC.
 Engineering/Architecture
 1955 SOUTH RAINBOW BLVD., LAS VEGAS, NEVADA 89102



JOB NO. 62008.203

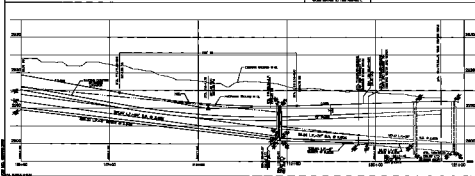
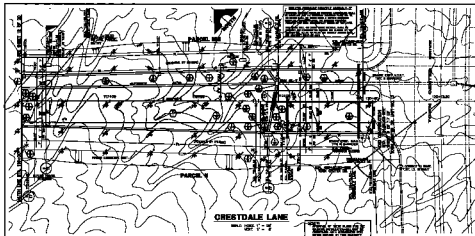
S.T.S., CD-2 DWG, 11/18/94

APPROVAL: _____

LAS VEGAS VALLEY WATER DISTRICT

SUMMERLIN
VILLAGE 8 UNIT 3 IMPROVEMENTS
CRESTDALE LANE
PLAN & PROFILE
STA. 116+00 TO STA. 119+96.92
 THESE PLANS ISSUED FOR GRADING ONLY 11-09-94

21-2-137 107-22289



CONSTRUCTION NOTES

1. INSTALL 12" DIA. R/W CURB
2. INSTALL 12" DIA. R/W CURB
3. INSTALL 12" DIA. R/W CURB
4. INSTALL 12" DIA. R/W CURB
5. INSTALL 12" DIA. R/W CURB
6. INSTALL 12" DIA. R/W CURB
7. INSTALL 12" DIA. R/W CURB
8. INSTALL 12" DIA. R/W CURB
9. INSTALL 12" DIA. R/W CURB
10. INSTALL 12" DIA. R/W CURB
11. INSTALL 12" DIA. R/W CURB
12. INSTALL 12" DIA. R/W CURB
13. INSTALL 12" DIA. R/W CURB
14. INSTALL 12" DIA. R/W CURB
15. INSTALL 12" DIA. R/W CURB
16. INSTALL 12" DIA. R/W CURB
17. INSTALL 12" DIA. R/W CURB
18. INSTALL 12" DIA. R/W CURB
19. INSTALL 12" DIA. R/W CURB
20. INSTALL 12" DIA. R/W CURB
21. INSTALL 12" DIA. R/W CURB
22. INSTALL 12" DIA. R/W CURB
23. INSTALL 12" DIA. R/W CURB
24. INSTALL 12" DIA. R/W CURB
25. INSTALL 12" DIA. R/W CURB
26. INSTALL 12" DIA. R/W CURB
27. INSTALL 12" DIA. R/W CURB
28. INSTALL 12" DIA. R/W CURB
29. INSTALL 12" DIA. R/W CURB
30. INSTALL 12" DIA. R/W CURB
31. INSTALL 12" DIA. R/W CURB
32. INSTALL 12" DIA. R/W CURB
33. INSTALL 12" DIA. R/W CURB
34. INSTALL 12" DIA. R/W CURB
35. INSTALL 12" DIA. R/W CURB
36. INSTALL 12" DIA. R/W CURB
37. INSTALL 12" DIA. R/W CURB
38. INSTALL 12" DIA. R/W CURB
39. INSTALL 12" DIA. R/W CURB
40. INSTALL 12" DIA. R/W CURB
41. INSTALL 12" DIA. R/W CURB
42. INSTALL 12" DIA. R/W CURB
43. INSTALL 12" DIA. R/W CURB
44. INSTALL 12" DIA. R/W CURB
45. INSTALL 12" DIA. R/W CURB
46. INSTALL 12" DIA. R/W CURB
47. INSTALL 12" DIA. R/W CURB
48. INSTALL 12" DIA. R/W CURB
49. INSTALL 12" DIA. R/W CURB
50. INSTALL 12" DIA. R/W CURB

APPROVAL:

DATE: 10-1-1978

13