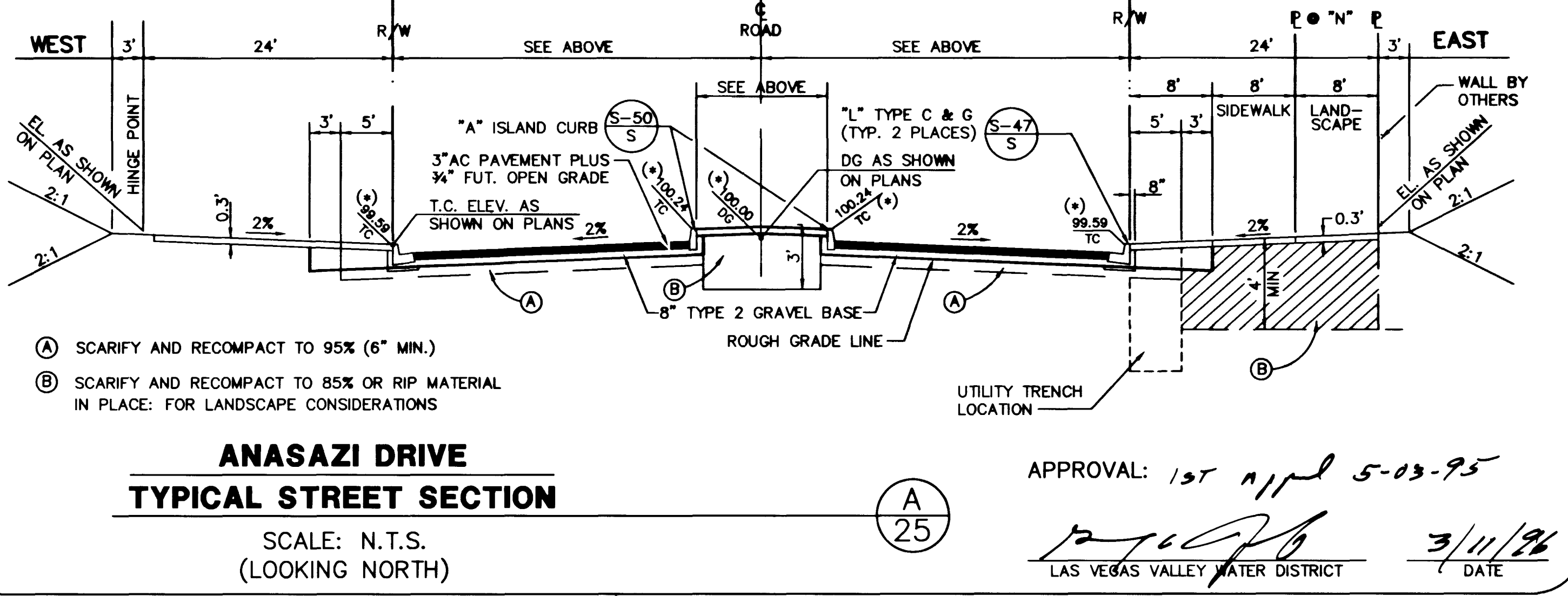


STA. 160+08.16 TO 176+79.16	39.00'	39.00'
STA. 159+16.78 TO 160+08.16	TRANSITION 46.00' TO 39.00'	39.00'
STA. 156+53.03 TO 159+16.78	46.00'	39.00'
STA. 154+72.53 TO 156+03.53	TRANSITION 39.00' TO 46.00'	TRANSITION 46.00' TO 39.00'
STA. 151+94.78 TO 154+72.53	39.00'	46.00'
STA. 151+03.40 TO 151+94.78	39.00'	TRANSITION 39.00' TO 46.00'
STA. 150+72.71 TO 151+03.40	39.00'	39.00'
STA. 148+09.71 TO 150+72.71	TRANSITION 51.50' TO 39.00'	TRANSITION 44.50' TO 39.00'
STA. 145+26.54 TO 148+09.71	51.50'	44.50'
STA. 143+50.54 TO 145+26.54	TRANSITION 44.50' TO 51.50'	TRANSITION 51.50' TO 44.50'
STA. 140+54.88 TO 143+50.54	44.50'	51.50'
STA. 137+91.88 TO 140+54.88	TRANSITION 39.00' TO 44.50'	TRANSITION 39.00' TO 51.50'
STA. 120+35.32 TO 137+91.88	39.00'	39.00'
STA. 116+27.51 TO 120+35.32	39.00'	46.00'
STA. 105+00.00 TO 116+27.51	39.00'	39.00'

ISLAND STA.		
STA. 160+08.16 TO 176+79.16	8.33'	8.33'
STA. 158+87.15 TO 160+08.16	TRANSITION -4.00' TO 8.33'	8.33'
STA. 155+91.65 TO 158+87.15	-4.00'	8.33'
STA. 152+24.41 TO 154+74.41	8.33'	-4.00'
STA. 151+03.40 TO 152+24.41	8.33'	TRANSITION 8.33' TO -4.00'
STA. 149+69.46 TO 151+03.40	TRANSITION 10.48' TO 8.33'	8.33'
STA. 148+09.39 TO 149+69.46	TRANSITION -9.50' TO 10.48'	8.33'
STA. 145+09.39 TO 148+09.39	-9.50'	13.83'
STA. 140+55.20 TO 143+55.20	13.83'	-9.50'
STA. 138+93.96 TO 140+55.20	TRANSITION 10.45' TO 13.83'	TRANSITION 10.81' TO -9.50'
STA. 137+92.20 TO 138+93.96	TRANSITION 8.33' TO 10.45'	TRANSITION 8.33' TO 10.81'
STA. 133+31.67 TO 137+92.20	8.33'	8.33'
STA. 132+10.66 TO 133+31.67	TRANSITION -4.00' TO 8.33'	8.33'
STA. 129+70.18 TO 132+10.66	-4.00'	8.33'
STA. 127+26.38 TO 128+86.06	8.33'	-4.00'
STA. 126+03.88 TO 127+26.38	8.33'	TRANSITION 8.33' TO -4.00'
STA. 125+72.60 TO 126+03.88	8.33'	8.33'
STA. 124+50.38 TO 125+72.60	TRANSITION -4.00' TO 8.33'	8.33'
STA. 121+50.13 TO 124+50.38	-4.00'	8.33'
STA. 120+02.18 TO 120+48.73	TRANSITION 8.33' TO 1.46'	8.33'
STA. 13+98.98 TO 120+02.18	8.33'	8.33'
STA. 113+57.04 TO 113+98.98	8.33'	TRANSITION 1.92 TO 8.33'
STA. 109+52.49 TO 112+67.04	8.33'	TRANSITION 8.33' TO -4.00'
STA. 105+00.00 TO 109+52.49	8.33'	8.33'

RECORD DRAWINGS
THESE PLANS SHOW RECORD INFORMATION RECEIVED FROM:
CONTRACTOR: WELLS CARGO INC. 02/25/97
THIS DATA MAY OR MAY NOT REFLECT THE ACTUAL FIELD LOCATIONS. ALL DATA SHOULD BE CONFIRMED PRIOR TO USE ON DEVELOPMENT OR ENGINEERING PLANS.



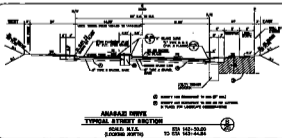
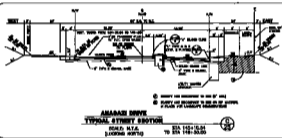
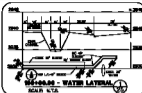
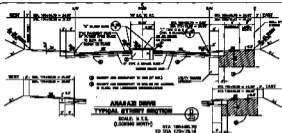
APPROVAL: 1st April 5-03-95
LAS VEGAS VALLEY WATER DISTRICT
DATE: 3/11/96

G.C. WALLACE, INC.
Engineering/Architecture
1555 SOUTH RAINBOW BLVD./LAS VEGAS, NEVADA 89102

**SUMMERLIN
ANASAZI DRIVE
TYPICAL STREET SECTIONS & DETAILS**

SHEET **25**
SHT 25 OF 29

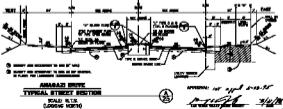
JOB NO. 62008.205



NO.	DESCRIPTION	QUANTITY	UNIT	AMOUNT	REMARKS
1	CONCRETE	100	YD	100	
2	GRAVEL	200	YD	200	
3	PIPE	100	FT	100	
4	MANHOLE	10	NO.	10	
5	SEWER	100	FT	100	
6	WATER	100	FT	100	
7	ELECTRIC	100	FT	100	
8	ASPHALT	100	YD	100	
9	PAVEMENT	100	YD	100	
10	LANDSCAPE	100	YD	100	

NO.	DESCRIPTION	QUANTITY	UNIT	AMOUNT	REMARKS
11	CONCRETE	100	YD	100	
12	GRAVEL	200	YD	200	
13	PIPE	100	FT	100	
14	MANHOLE	10	NO.	10	
15	SEWER	100	FT	100	
16	WATER	100	FT	100	
17	ELECTRIC	100	FT	100	
18	ASPHALT	100	YD	100	
19	PAVEMENT	100	YD	100	
20	LANDSCAPE	100	YD	100	

ALL WORK SHALL BE DONE IN ACCORDANCE WITH THE STANDARD SPECIFICATIONS FOR HIGHWAY CONSTRUCTION, 1988 EDITION, AS AMENDED, AND THE STANDARD SPECIFICATIONS FOR WATER SUPPLY SYSTEMS, 1988 EDITION, AS AMENDED.



P.C. WALLACE, INC.

AMASAZI DRIVE IMPROVEMENTS
TYPICAL STREET SECTION