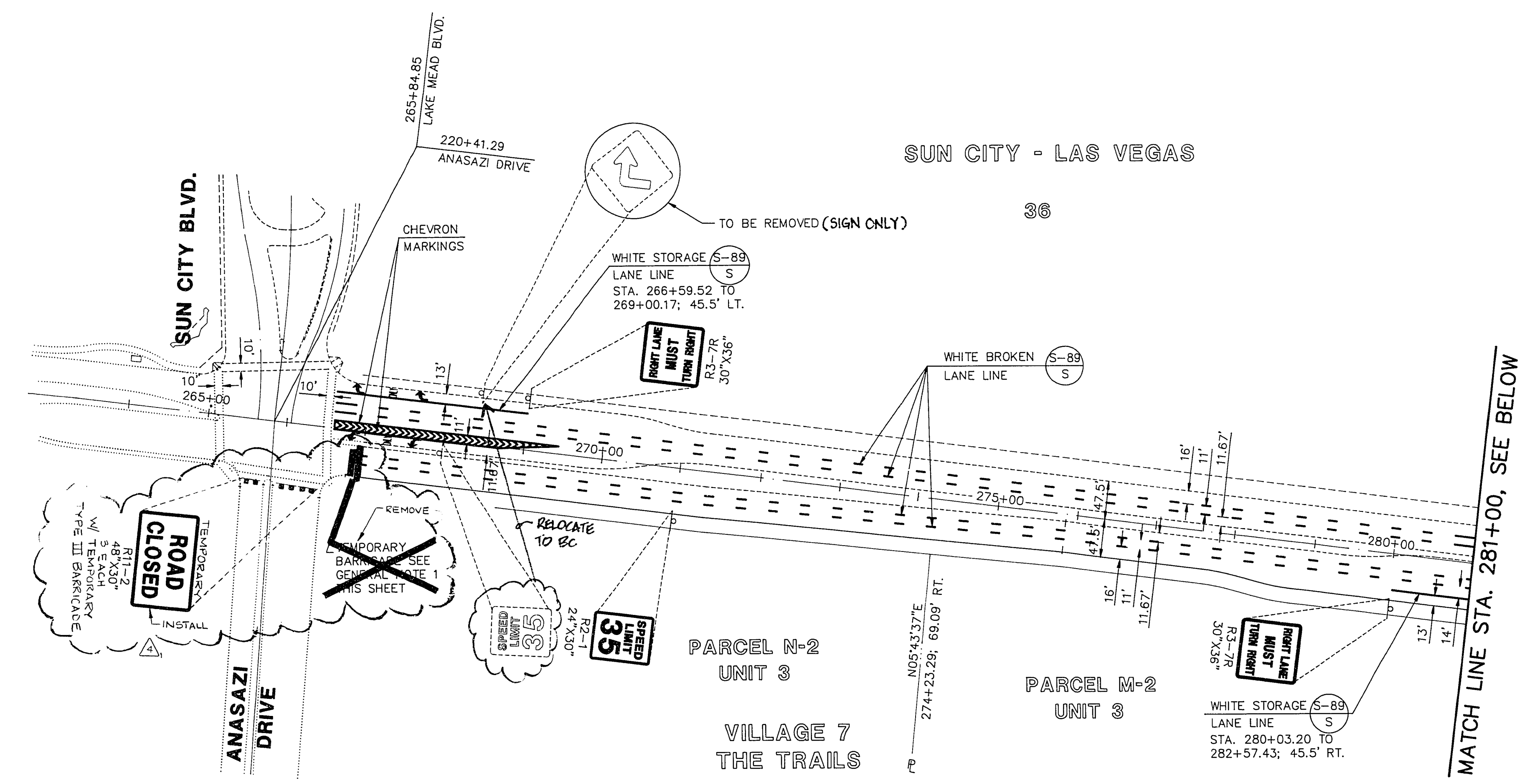


SUN CITY - LAS VEGAS

36

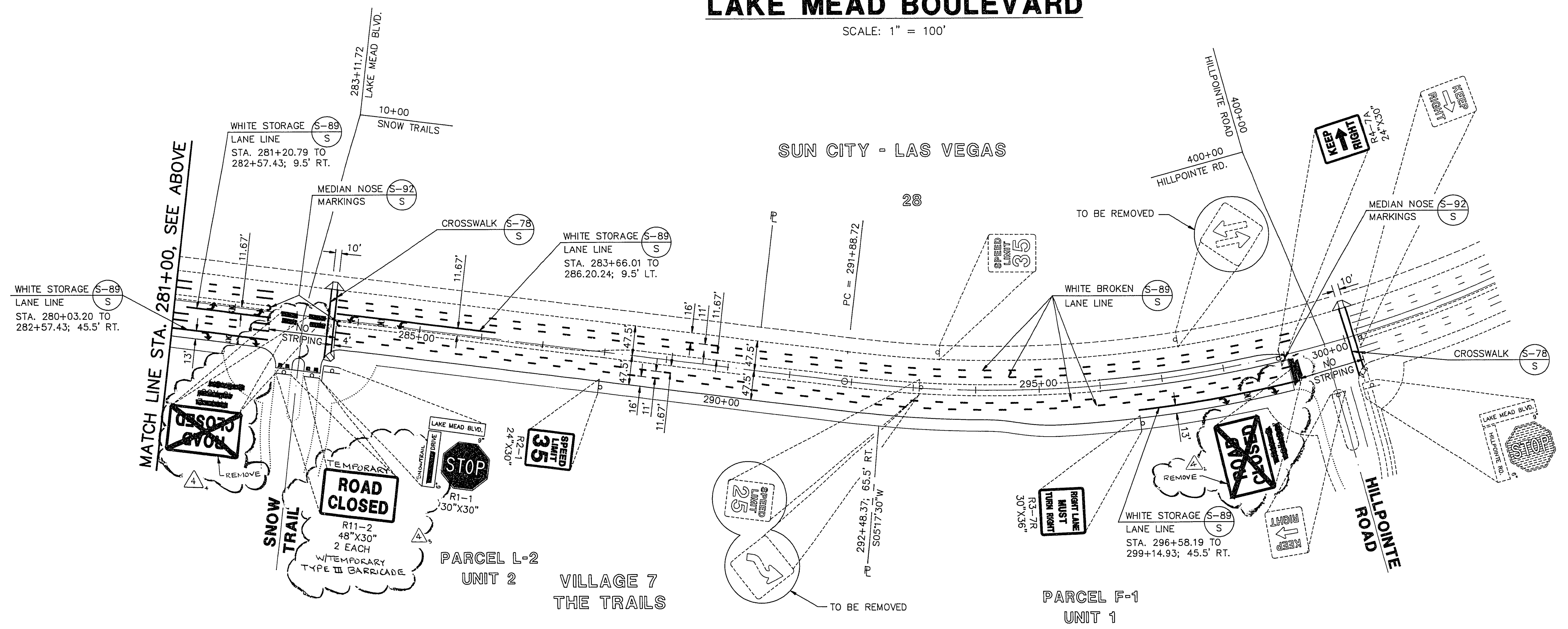


LAKE MEAD BOULEVARD

SCALE: 1" = 100'

SUN CITY - LAS VEGAS

28



LAKE MEAD BOULEVARD

SCALE: 1" = 100'

GENERAL NOTES

1. STRIPING OR SIGNAGE PER THESE PLANS SHALL NOT BE INITIATED UNTIL LAKE MEAD BLVD. IMPROVEMENTS STA. 226+33.95 TO 265+84.85 AND ANASAZI DR. IMPROVEMENTS ARE COMPLETE IN ORDER TO OPEN THE SOUTH HALF OF LAKE MEAD BLVD. ALONG VILLAGE 7 TO PUBLIC TRAFFIC.
2. THE INITIAL 3" LIFT OF ASPHALT ON LAKE MEAD BLVD. IS TO BE COMPLETED, AND THEN STRIPED WITH TEMPORARY STRIPING.
3. TEMPORARY STRIPING SHALL BE DEFINED AS 4" WIDE WHITE PAINTED STRIPING IN THE SAME CONFIGURATION AS THE FINAL STRIPING INDICATED ON THIS PLAN.
4. THE FINAL 1" LIFT OF ASPHALT IS TO BE COMPLETED AFTER THE LANDSCAPING ON THE SOUTH SIDE OF THE STREET IS FINISHED. WITH THE COMPLETION OF THE 1" LIFT OF ASPHALT, THE FINAL STRIPING SHALL BE INSTALLED PER THIS PLAN AND AS DESIGNATED.
5. SIGNAGE SHALL BE INSTALLED CONCURRENTLY WITH THE 3" LIFT OF ASPHALT ON THE ROADWAY. ALL SIGNAGE TO BE INSTALLED PER SUMMERLIN STANDARDS.

CONSTRUCTION NOTE

THIS PLAN DELINIATES THE TEMPORARY STRIPING, PERMANENT STRIPING, AND ULTIMATE SIGNAGE FOR BOTH THE NORTH AND SOUTH SIDES OF LAKE MEAD BLVD. IT IS THE INTENT OF THESE DRAWINGS TO PROVIDE THE IMPROVEMENTS ONLY ON THE SOUTH SIDE OF THE STREET. ALL TEMPORARY, BLACK-OUT, AND PERMANENT STRIPING; AS WELL AS SIGNAGE SHOWN ON THE NORTH SIDE OF THIS DRAWING SHALL BE COMPLETED BY OTHERS.

RECOMMENDED	5071	DATE	APPROVAL
CHRISTOPHER W. ANDERSON	R.P.E. NO.	DATE	APPROVAL
3/23/95	ADJUST SIGNS & STREET NAME CHANGE	DATE	APPROVAL
REV. DATE	DESCRIPTION	DATE	APPROVAL
G.C. WALLACE, INC. Engineering/Architecture			
SUMMERLIN VILLAGE 7 - LAKE MEAD BOULEVARD SIGNAGE, STRIPING & FINAL PAVEMENT			
SHEET 16 SHT 16 OF 16			

JOB NO. 62007.209

LD LASTRIPE 6-02-94

20-2-15 107-V2280