

CURVE DATA ① INDICATES CURVE NUMBER

CURVE	DELTA	RADIUS	LENGTH	TANGENT
1	180°00'00"	2.00'	6.28'	---
2	90°00'00"	30.00'	47.12'	30.00'
3	162°33'31"	5.00'	14.19'	32.60'
4	172°28'29"	150.00'	45.66'	23.01'
5	03°27'03"	1100.00'	66.25'	33.14'
6	09°46'47"	300.00'	51.21'	25.67'
7	03°27'03"	1061.00'	63.90'	31.96'
8	03°27'03"	1139.00'	68.60'	34.31'
9	03°27'03"	1091.67'	65.75'	32.88'

NOTE: CURVE DATA REPRESENTS PARTIAL CURVE, THIS SHEET ONLY.

CONSTRUCTION NOTES

- IMPROVEMENTS**
- ① INSTALL A.C. PAVEMENT PER STREET SECTIONS, SHEET NO. 14
 - ② INSTALL "L" TYPE CURB AND GUTTER (S-47 S)
 - ③ INSTALL "A" TYPE ISLAND CURB (S-50 S)
 - ④ ADJUST EXISTING MANHOLE TO GRADE

- STREET LIGHTING**
- ⑤ STREET LIGHT OR COMMON TRENCH, SEE ELECTRICAL PLANS
 - ⑥ STREET LIGHT, SEE ELECTRICAL PLANS (E-2 S)

- IRRIGATION**
- ⑦ BANK "A", 1-6" & 2-4" SDR35 PVC (U-18 S)

RECOMMENDED BY: [Signature]

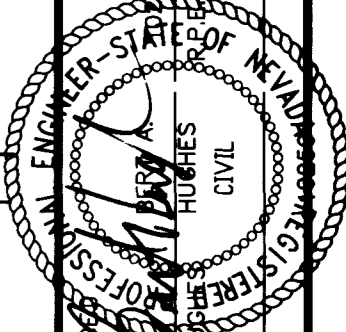
DATE: 10/10/96

DESIGNED BY: [Signature]

CHECKED BY: [Signature]

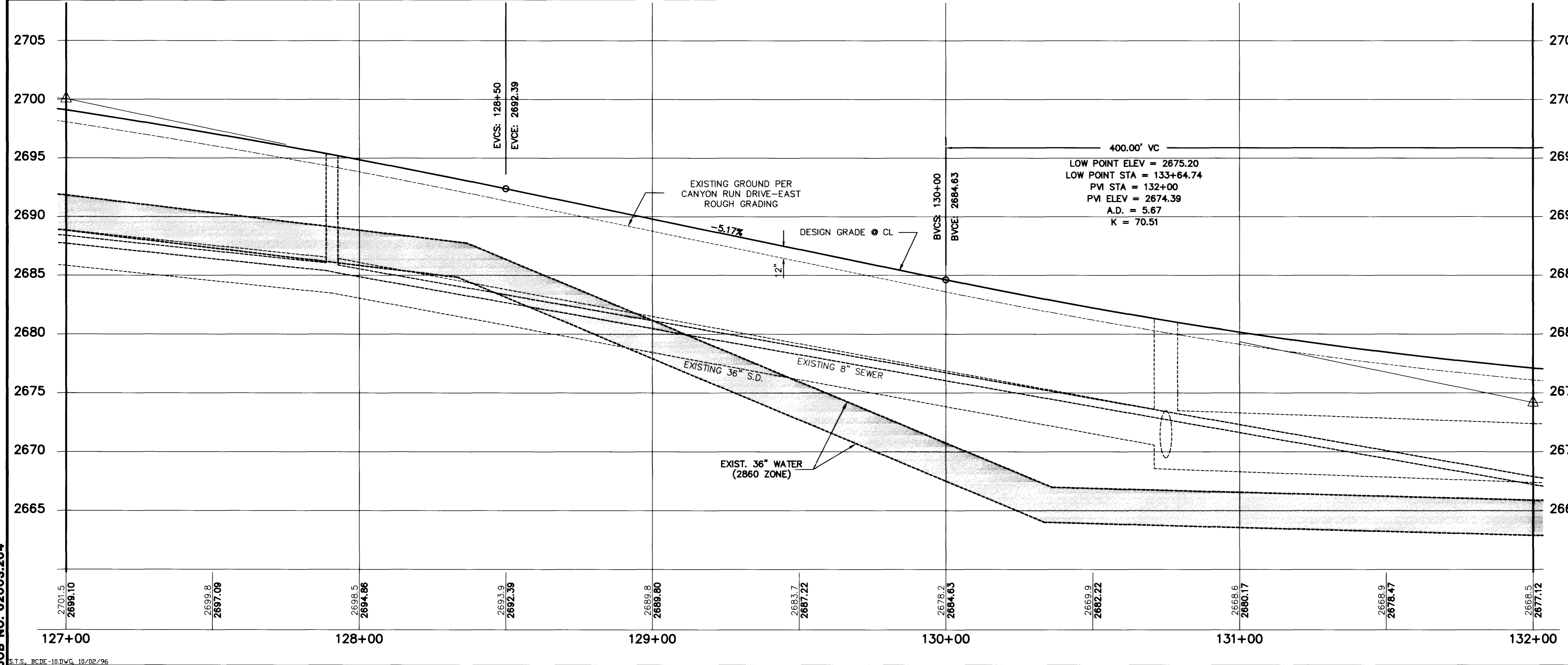
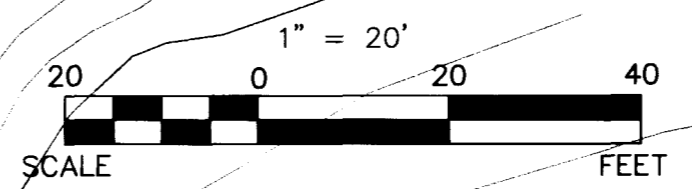
APPROVED BY: [Signature]

DATE: 10/10/96



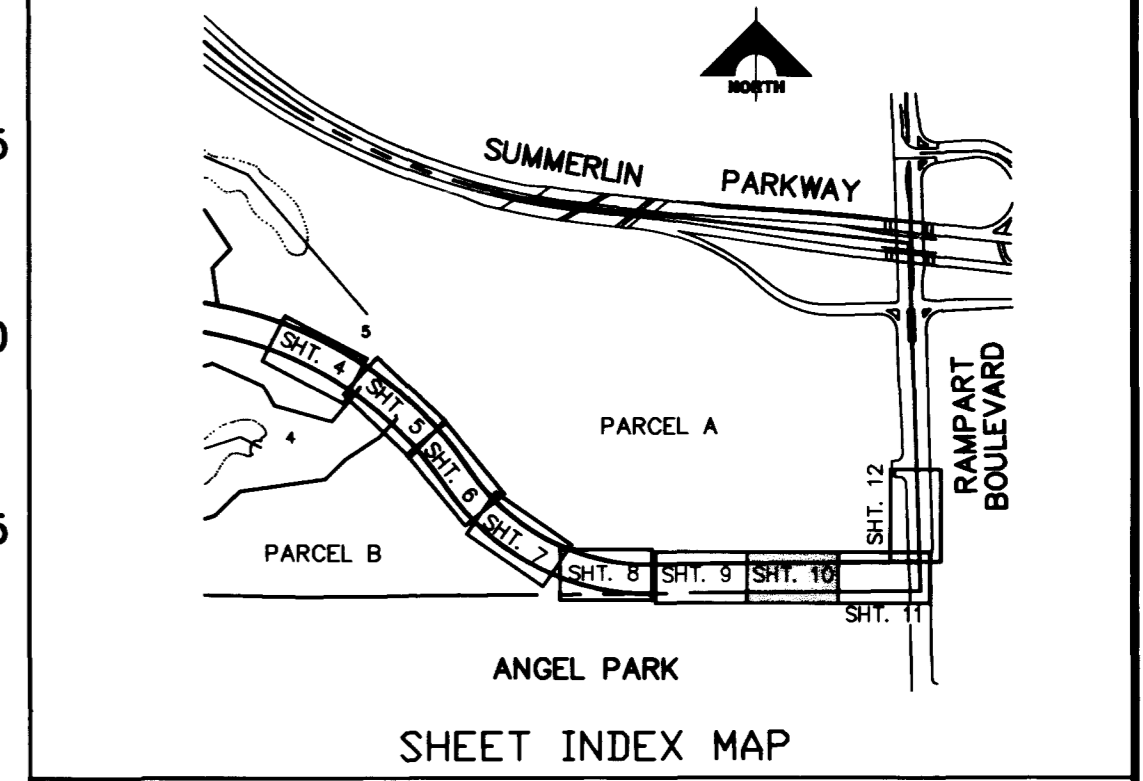
CANYON RUN DRIVE - EAST

SCALE: HORIZ. 1" = 20'
VERT. 1" = 5'



NOTE: ALL COMMON LOTS AS SHOWN HEREIN TO BE PRIVATELY MAINTAINED BY THE H.O.A.

NOTE TO CONTRACTOR
TOPOGRAPHY SHOWN HEREIN REFLECTS ORIGINAL EXISTING TOPOGRAPHY. ACTUAL FIELD CONDITIONS INCLUDE SITE ROUGH GRADING.



APPROVAL: [Signature] 5/10/96

LAS VEGAS VALLEY WATER DISTRICT

10/10/96

G. C. WALLACE, INC.
Engineering/Architecture

SUMMERLIN VILLAGE 3
CANYON RUN DRIVE - EAST
PLAN AND PROFILE
STA. 127+25.00 TO STA. 132+00.00

SHEET 10
SHT 10 OF 15

