

**REDUCED PRESSURE PRINCIPLE ASSEMBLY-3/4"**  
 APPROVED REDUCED PRESSURE PRINCIPLE ASSEMBLY(S) SHALL BE INSTALLED PER THE DISTRICT'S STANDARD PLATE NO. 11A. NO WATER SHALL BE TAKEN FROM A SERVICE REQUIRING BACKFLOW PREVENTION UNTIL THE REDUCED PRESSURE PRINCIPLE HAS BEEN SUCCESSFULLY TESTED BY THE LVWMD. ANY BLOCK WALL OR OTHER FENCE MATERIAL SHALL BE DESIGNED AND CONSTRUCTED AROUND THE OUTSIDE OF THE EASEMENT(S), SO AS TO ALLOW THE DISTRICT ACCESS FROM THE ADJACENT RIGHT-OF-WAY.

**CURVE DATA** (1) INDICATES CURVE NUMBER

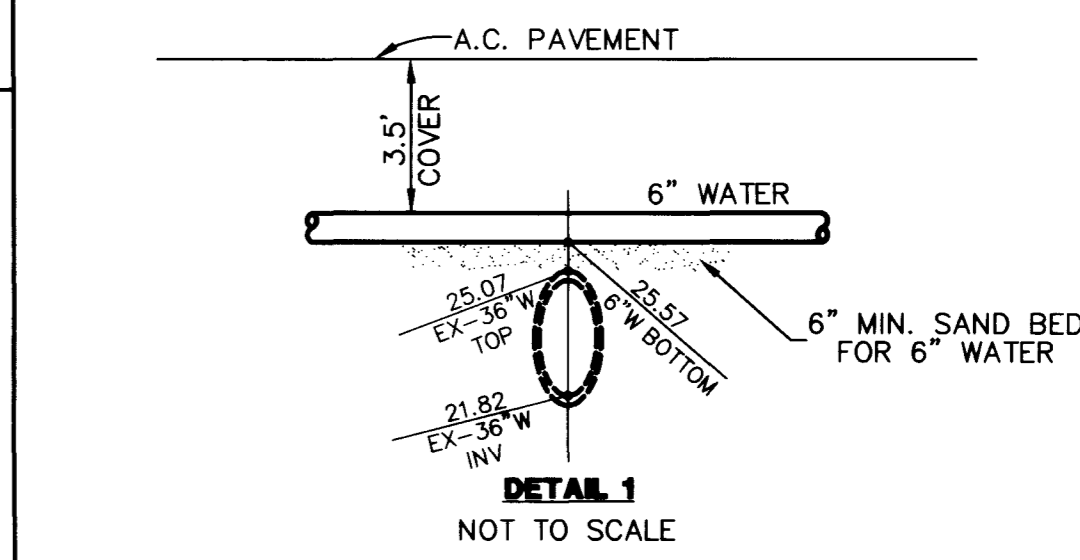
CURVE	DELTA	RADIUS	LENGTH	TANGENT
1	07°02'33"	300.00'	36.87'	18.46'
2	14°02'27"	300.00'	73.52'	36.94'
3	15°13'09"	1561.00'	414.64'	208.53'
4	15°13'09"	1591.87'	422.79'	212.65'
5	15°13'09"	1600.00'	425.00'	213.76'
6	15°13'09"	1639.00'	435.36'	218.97'
7	11°16'14"	1808.33'	317.30'	158.13'

NOTE: CURVE DATA REPRESENTS PARTIAL CURVE, THIS SHEET ONLY.

- CONSTRUCTION NOTES**
- INSTALL A.C. PAVEMENT PER STREET SECTIONS, SHEET NO. 14
  - INSTALL "L" TYPE CURB AND GUTTER (S-47)
  - INSTALL "A" TYPE ISLAND CURB (S-90)
  - ADJUST EXISTING MANHOLE TO GRADE

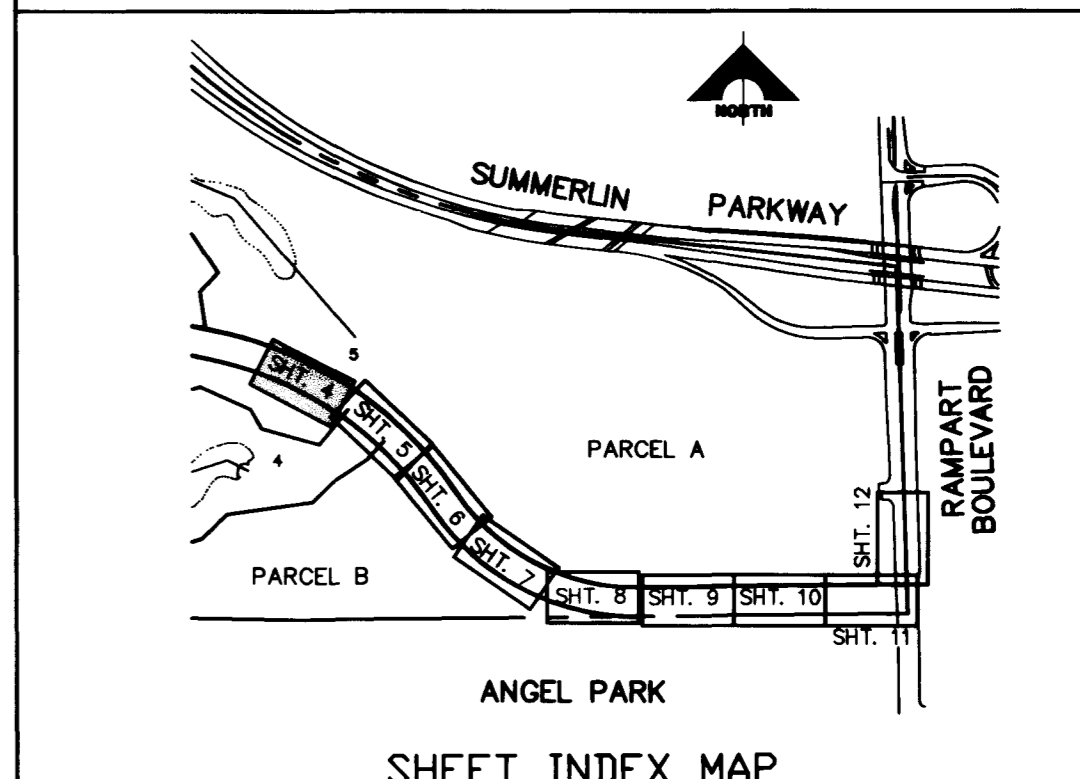
- WATER**
- INSTALL 6" WATER PIPE (U-20)
  - INSTALL 12" X 6" REDUCER
  - INSTALL FIRE HYDRANT ASSEMBLY (U-33)
  - INSTALL 1" SERVICE PER LVWMD STD. PLATE NO. 1A
  - INSTALL 5/8" METER PER LVWMD STD. PLATE NO. 1A
  - INSTALL 3/4" R.P.P.A. PER LVWMD STD. PLATE NO. 11A

- STREET LIGHTING**
- STREET LIGHT OR COMMON TRENCH, SEE ELECTRICAL PLANS
  - STREET LIGHT, SEE ELECTRICAL PLANS (E-2)

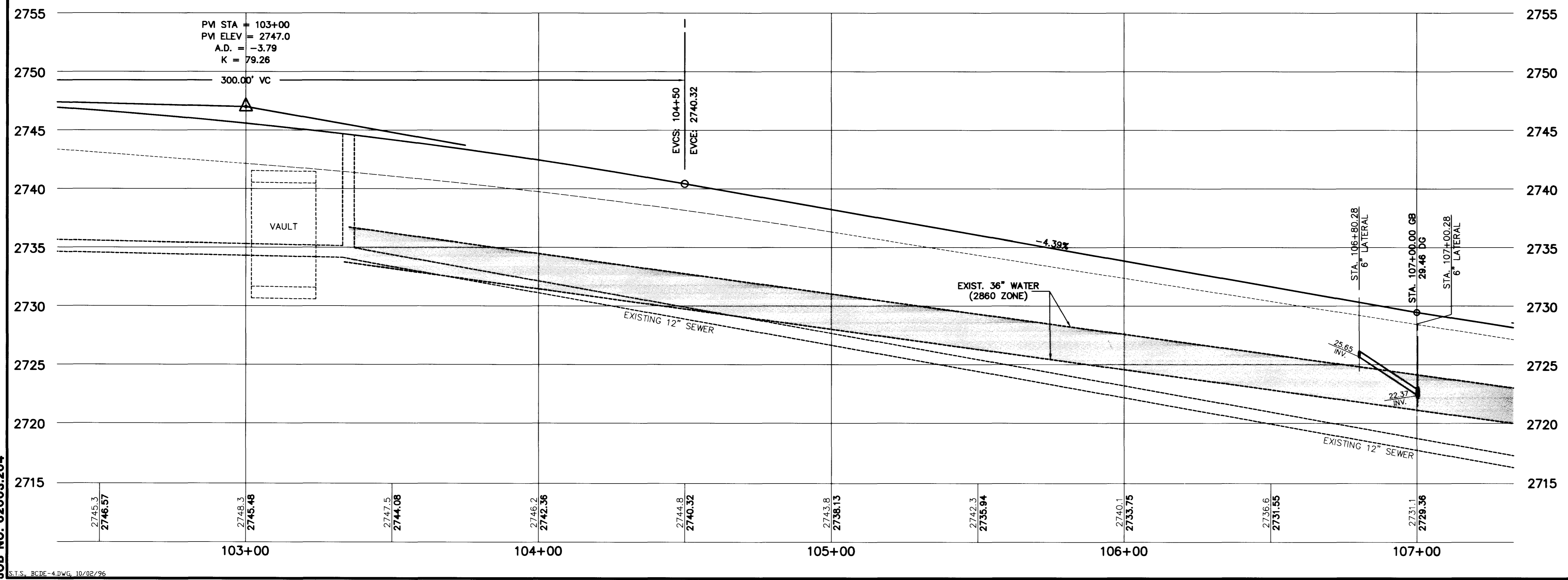


NOTE: ALL COMMON LOTS AS SHOWN HEREIN TO BE PRIVATELY MAINTAINED BY THE H.O.A.

**NOTE TO CONTRACTOR**  
 TOPOGRAPHY SHOWN HEREIN REFLECTS ORIGINAL EXISTING TOPOGRAPHY. ACTUAL FIELD CONDITIONS INCLUDE SITE ROUGH GRADING.



APPROVAL:  
 1st APP - 5/11/14  
 12/15/14  
 LAS VEGAS VALLEY WATER DISTRICT



RECOMMENDED BY: [Signature] ENGINEER, STATE OF NEVADA  
 BERT A. HUGHES, CIVIL  
 155 SOUTH RAINBOW BLVD., LAS VEGAS, NEVADA 89108

**G.C. WALLACE, INC.**  
 Engineering/Architecture

**SUMMERLIN VILLAGE 3**  
**CANYON RUN DRIVE - EAST**  
**PLAN AND PROFILE**  
**STA. 103+00.00 TO STA. 107+25.00**

SHEET **4** OF 15

