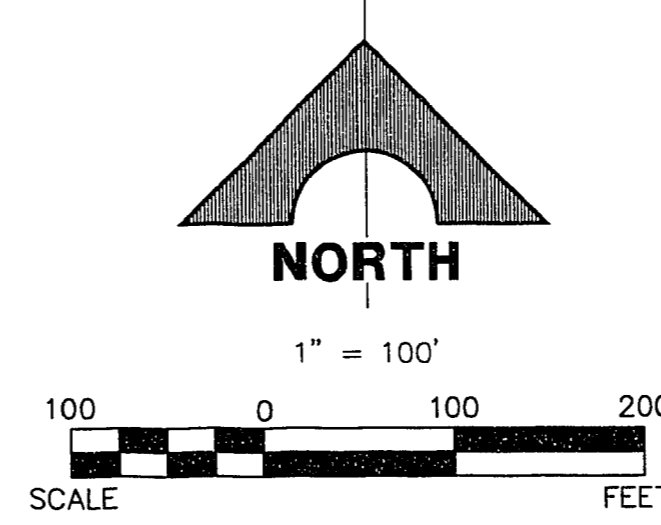
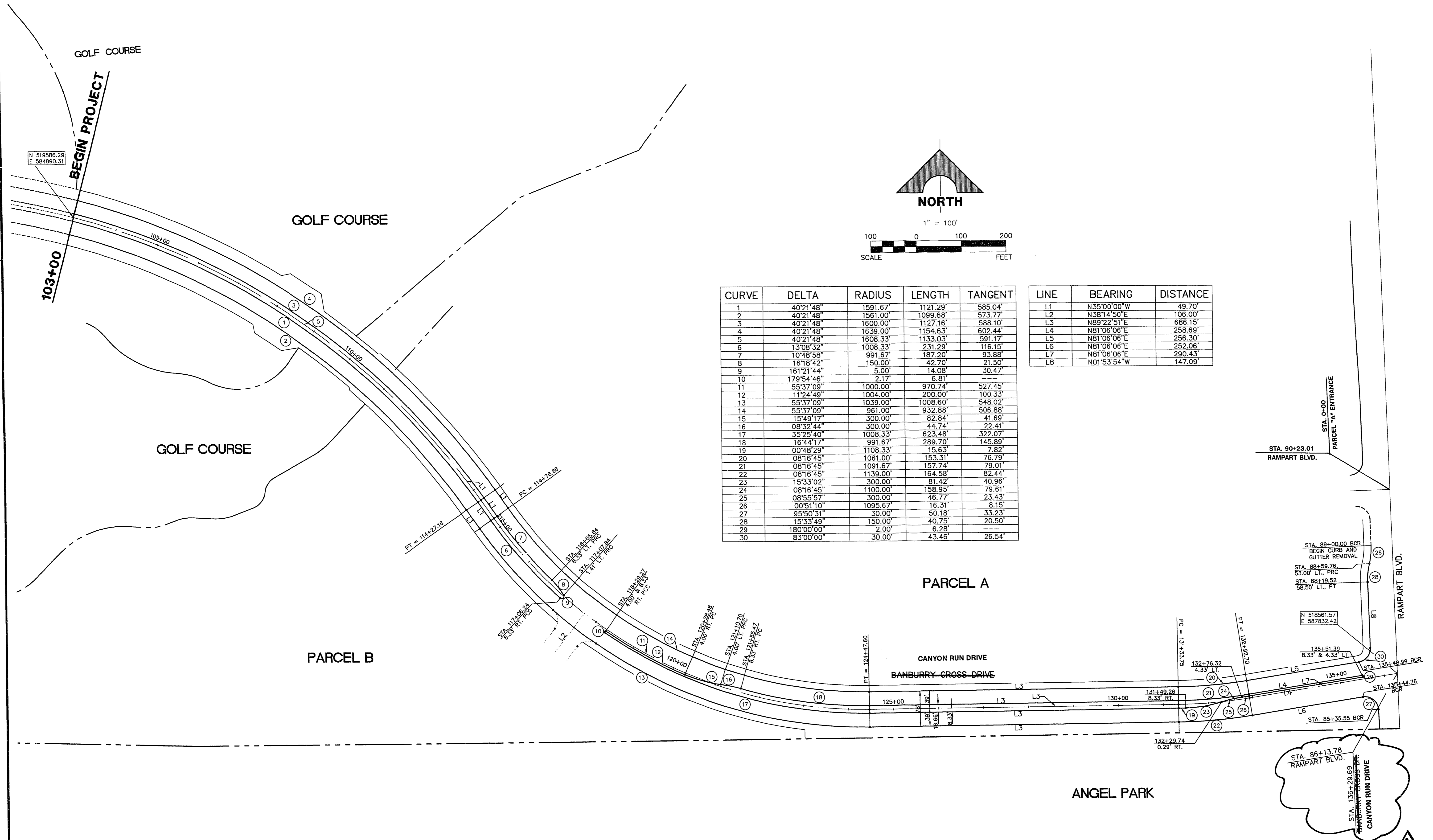


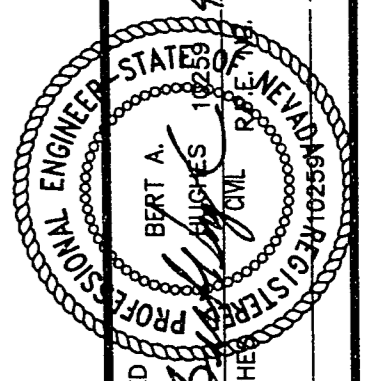
JOB NO. 62003.204

15.T.S., BCDE-NCP.DWG, 03/29/96



CURVE	DELTA	RADIUS	LENGTH	TANGENT
1	40°21'48"	1591.67'	1121.29'	585.04'
2	40°21'48"	1561.00'	1099.68'	573.77'
3	40°21'48"	1600.00'	1127.16'	588.10'
4	40°21'48"	1639.00'	1154.63'	602.44'
5	40°21'48"	1608.33'	1133.03'	591.17'
6	13°08'32"	1008.33'	231.29'	116.15'
7	10°48'58"	991.67'	187.20'	93.88'
8	16°18'42"	150.00'	42.70'	21.50'
9	161°21'44"	5.00'	14.08'	30.47'
10	179°54'46"	2.17'	6.81'	---
11	55°37'09"	1000.00'	970.74'	527.45'
12	11°24'49"	1004.00'	200.00'	100.33'
13	55°37'09"	1039.00'	1008.60'	548.02'
14	55°37'09"	951.00'	932.88'	506.88'
15	15°49'17"	300.00'	82.84'	41.69'
16	08°32'44"	300.00'	44.74'	22.41'
17	35°25'40"	1008.33'	623.48'	322.07'
18	16°44'17"	991.67'	289.70'	145.89'
19	00°48'29"	1108.33'	15.63'	7.82'
20	08°16'45"	1061.00'	153.31'	76.79'
21	08°16'45"	1091.67'	157.74'	79.01'
22	08°16'45"	1139.00'	164.58'	82.44'
23	15°33'02"	300.00'	81.42'	40.96'
24	08°16'45"	1100.00'	158.95'	79.61'
25	08°55'57"	300.00'	46.77'	23.43'
26	00°51'10"	1095.67'	16.31'	8.15'
27	95°50'31"	30.00'	50.18'	33.23'
28	15°33'49"	150.00'	40.75'	20.50'
29	180°00'00"	2.00'	6.28'	---
30	83°00'00"	30.00'	43.46'	26.54'

LINE	BEARING	DISTANCE
L1	N35°00'00"W	49.70'
L2	N38°14'50"E	106.00'
L3	N89°22'51"E	686.15'
L4	N81°06'06"E	258.69'
L5	N81°06'06"E	256.30'
L6	N81°06'06"E	252.06'
L7	N81°06'06"E	290.43'
L8	N01°53'54"W	147.09'



REV	DATE	DESCRIPTION
1	08/15/96	STREET NAME CHANGE
2	03/22/96	APPROVAL

RECOMMENDED BY  
 BERT A. WALLACE, INC.  
 Engineering/Architecture  
 1555 SOUTH RAINBOW BLVD., LAS VEGAS, NEVADA 89102

**SUMMERLIN VILLAGE 3**  
**BANBURY CROSS DRIVE - EAST**  
 CANYON RUN DRIVE - EAST  
**HORIZONTAL CONTROL PLAN**

SHEET  
**3**  
 SHT 3 OF 15

24-2-61

107-V2464-2