

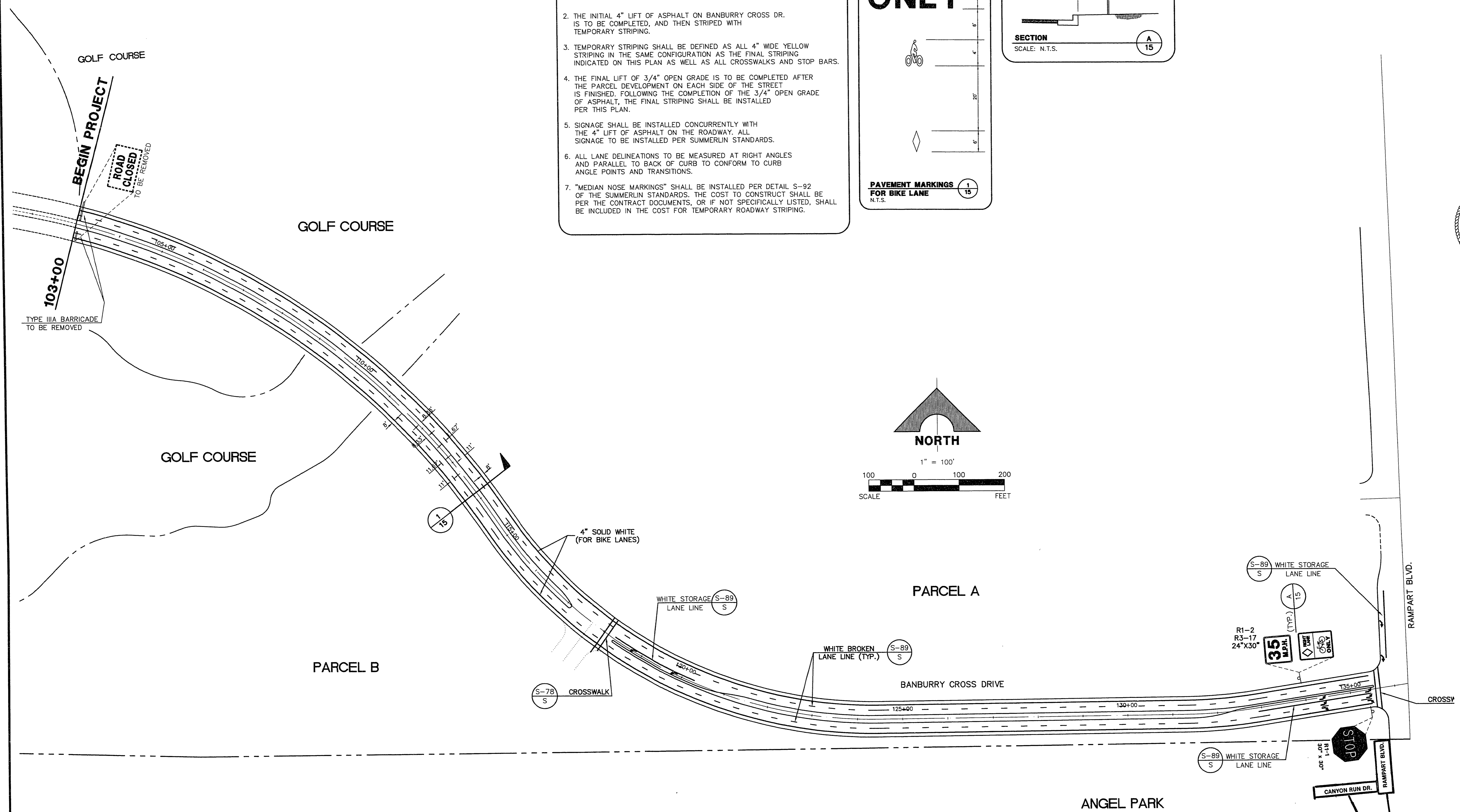
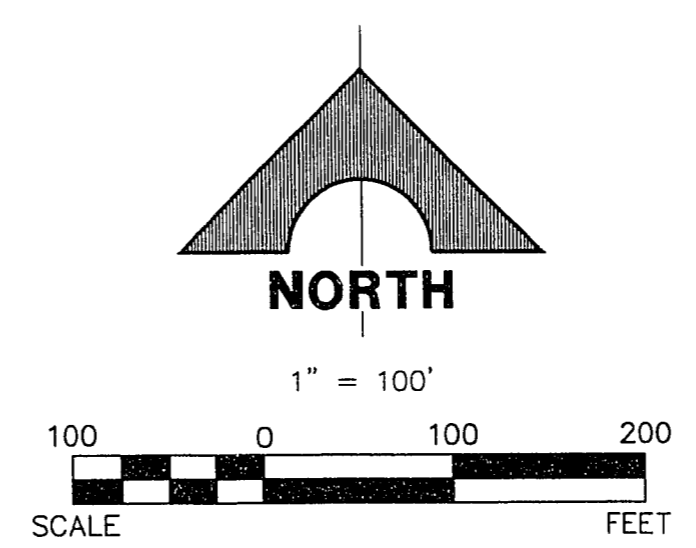
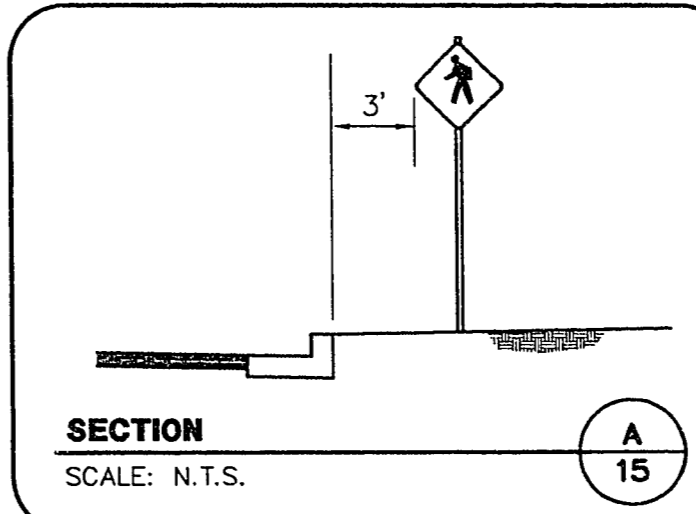
GENERAL NOTES

1. ALL TRAFFIC SIGNS (IE SPEED LIMIT & OTHER REGULATORY SIGNS) ALONG BANBURY CROSS DR. ARE SHOWN FOR GENERAL LOCATION REQUIREMENTS ONLY. ACTUAL LOCATION TO BE FIELD COORDINATED WITH OWNER AND LANDSCAPE DESIGN.
2. THE INITIAL 4" LIFT OF ASPHALT ON BANBURY CROSS DR. IS TO BE COMPLETED, AND THEN STRIPED WITH TEMPORARY STRIPING.
3. TEMPORARY STRIPING SHALL BE DEFINED AS ALL 4" WIDE YELLOW STRIPING IN THE SAME CONFIGURATION AS THE FINAL STRIPING INDICATED ON THIS PLAN AS WELL AS ALL CROSSWALKS AND STOP BARS.
4. THE FINAL LIFT OF 3/4" OPEN GRADE IS TO BE COMPLETED AFTER THE PARCEL DEVELOPMENT ON EACH SIDE OF THE STREET IS FINISHED. FOLLOWING THE COMPLETION OF THE 3/4" OPEN GRADE OF ASPHALT, THE FINAL STRIPING SHALL BE INSTALLED PER THIS PLAN.
5. SIGNAGE SHALL BE INSTALLED CONCURRENTLY WITH THE 4" LIFT OF ASPHALT ON THE ROADWAY. ALL SIGNAGE TO BE INSTALLED PER SUMMERLIN STANDARDS.
6. ALL LANE DELINEATIONS TO BE MEASURED AT RIGHT ANGLES AND PARALLEL TO BACK OF CURB TO CONFORM TO CURB ANGLE POINTS AND TRANSITIONS.
7. "MEDIAN NOSE MARKINGS" SHALL BE INSTALLED PER DETAIL S-92 OF THE SUMMERLIN STANDARDS. THE COST TO CONSTRUCT SHALL BE PER THE CONTRACT DOCUMENTS, OR IF NOT SPECIFICALLY LISTED, SHALL BE INCLUDED IN THE COST FOR TEMPORARY ROADWAY STRIPING.

ONLY



PAVEMENT MARKINGS
FOR BIKE LANE
N.T.S.



2 - METRO 9" SIGNS
PER CLARK CO. STDS.
DWG NO. 250

RECOMMENDED	DATE
BERT A. WALLACE	8/23/06
REVISION	DATE
1	8/23/06
2	8/23/06
3	8/23/06
4	8/23/06
5	8/23/06
6	8/23/06
7	8/23/06
8	8/23/06
9	8/23/06
10	8/23/06
11	8/23/06
12	8/23/06
13	8/23/06
14	8/23/06
15	8/23/06
16	8/23/06
17	8/23/06
18	8/23/06
19	8/23/06
20	8/23/06
21	8/23/06
22	8/23/06
23	8/23/06
24	8/23/06
25	8/23/06
26	8/23/06
27	8/23/06
28	8/23/06
29	8/23/06
30	8/23/06
31	8/23/06
32	8/23/06
33	8/23/06
34	8/23/06
35	8/23/06
36	8/23/06
37	8/23/06
38	8/23/06
39	8/23/06
40	8/23/06
41	8/23/06
42	8/23/06
43	8/23/06
44	8/23/06
45	8/23/06
46	8/23/06
47	8/23/06
48	8/23/06
49	8/23/06
50	8/23/06
51	8/23/06
52	8/23/06
53	8/23/06
54	8/23/06
55	8/23/06
56	8/23/06
57	8/23/06
58	8/23/06
59	8/23/06
60	8/23/06
61	8/23/06
62	8/23/06
63	8/23/06
64	8/23/06
65	8/23/06
66	8/23/06
67	8/23/06
68	8/23/06
69	8/23/06
70	8/23/06
71	8/23/06
72	8/23/06
73	8/23/06
74	8/23/06
75	8/23/06
76	8/23/06
77	8/23/06
78	8/23/06
79	8/23/06
80	8/23/06
81	8/23/06
82	8/23/06
83	8/23/06
84	8/23/06
85	8/23/06
86	8/23/06
87	8/23/06
88	8/23/06
89	8/23/06
90	8/23/06
91	8/23/06
92	8/23/06
93	8/23/06
94	8/23/06
95	8/23/06
96	8/23/06
97	8/23/06
98	8/23/06
99	8/23/06
100	8/23/06
101	8/23/06
102	8/23/06
103	8/23/06
104	8/23/06
105	8/23/06
106	8/23/06
107	8/23/06
108	8/23/06
109	8/23/06
110	8/23/06
111	8/23/06
112	8/23/06
113	8/23/06
114	8/23/06
115	8/23/06
116	8/23/06
117	8/23/06
118	8/23/06
119	8/23/06
120	8/23/06
121	8/23/06
122	8/23/06
123	8/23/06
124	8/23/06
125	8/23/06
126	8/23/06
127	8/23/06
128	8/23/06
129	8/23/06
130	8/23/06
131	8/23/06
132	8/23/06
133	8/23/06
134	8/23/06
135	8/23/06
136	8/23/06
137	8/23/06
138	8/23/06
139	8/23/06
140	8/23/06
141	8/23/06
142	8/23/06
143	8/23/06
144	8/23/06
145	8/23/06
146	8/23/06
147	8/23/06
148	8/23/06
149	8/23/06
150	8/23/06
151	8/23/06
152	8/23/06
153	8/23/06
154	8/23/06
155	8/23/06
156	8/23/06
157	8/23/06
158	8/23/06
159	8/23/06
160	8/23/06
161	8/23/06
162	8/23/06
163	8/23/06
164	8/23/06
165	8/23/06
166	8/23/06
167	8/23/06
168	8/23/06
169	8/23/06
170	8/23/06
171	8/23/06
172	8/23/06
173	8/23/06
174	8/23/06
175	8/23/06
176	8/23/06
177	8/23/06
178	8/23/06
179	8/23/06
180	8/23/06
181	8/23/06
182	8/23/06
183	8/23/06
184	8/23/06
185	8/23/06
186	8/23/06
187	8/23/06
188	8/23/06
189	8/23/06
190	8/23/06
191	8/23/06
192	8/23/06
193	8/23/06
194	8/23/06
195	8/23/06
196	8/23/06
197	8/23/06
198	8/23/06
199	8/23/06
200	8/23/06

JOB NO. 62003.204

S.T.S., RCDE-SS.DWG, 02/20/96

SUMMERLIN
VILLAGE 3
BANBURY CROSS DRIVE - EAST
CANYON RUN DRIVE
STRIPING AND SIGNAGE PLAN

SHEET
15
SHT 15 OF 15

28-2-73 107-V2464-2