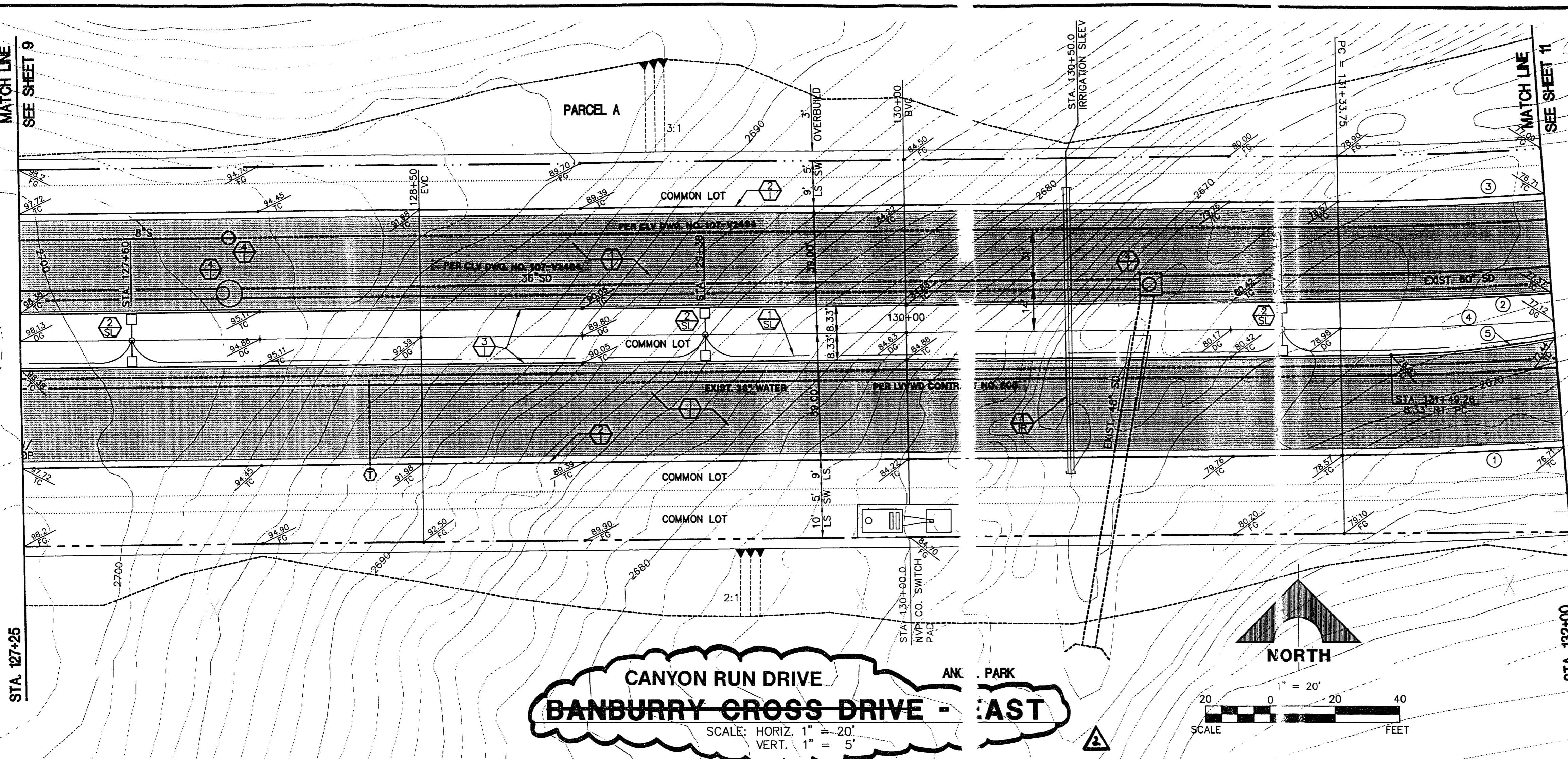


MATCH LINE
SEE SHEET 9

MATCH LINE
SEE SHEET 11



CANYON RUN DRIVE - EAST
SCALE: HORIZ. 1" = 20'
VERT. 1" = 5'

CURVE DATA ① INDICATES CURVE NUMBER

CURVE	DELTA	RADIUS	LENGTH	TANGENT
1	03°27'03"	1138.00'	88.60'	34.31'
2	03°27'03"	1081.87'	88.73'	32.88'
3	03°27'03"	1061.00'	63.90'	31.96'
4	03°27'03"	1100.00'	66.25'	33.14'
5	08°46'47"	300.00'	51.21'	25.67'

NOTE: CURVE DATA REPRESENTS PARTIAL CURVE, THIS SHEET ONLY.

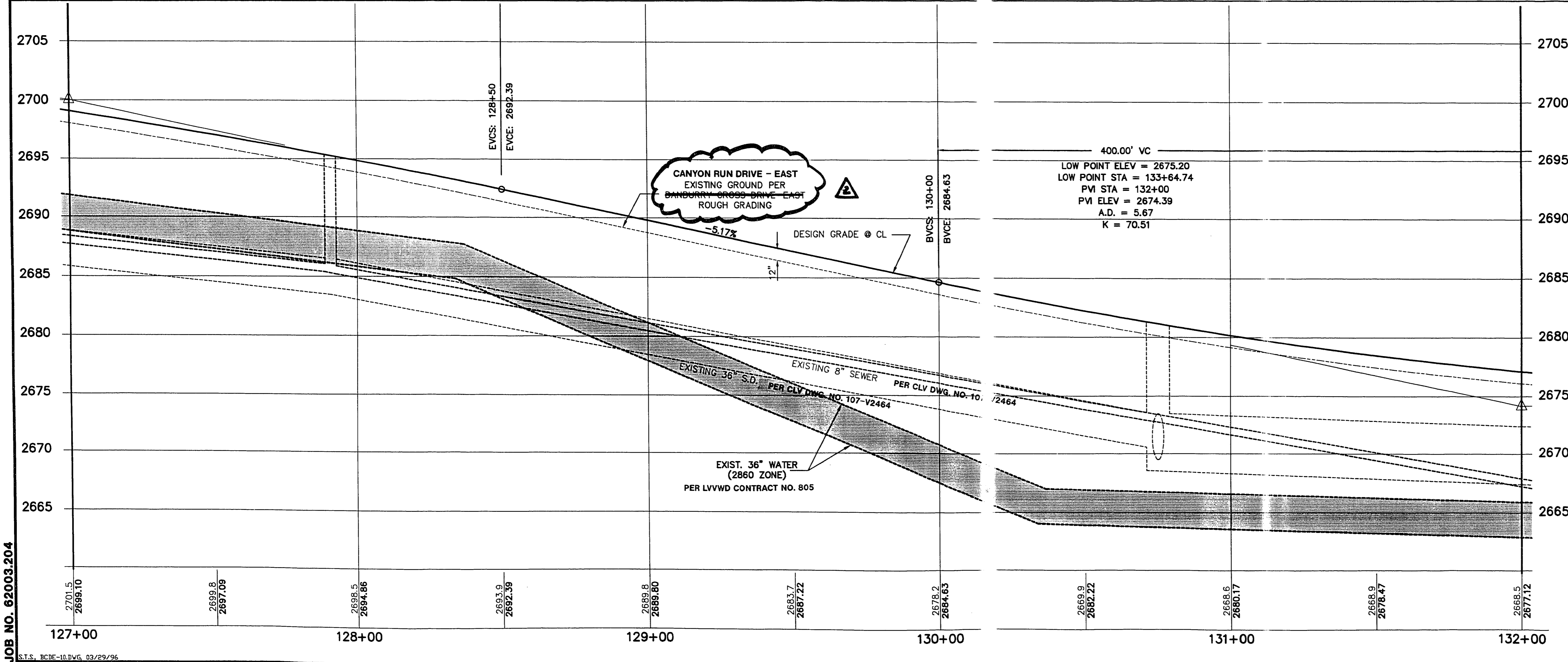
CONSTRUCTION NOTES

- IMPROVEMENTS**
- ① INSTALL A.C. PAVEMENT PER STREET SECTIONS, SHEET NO. 14
 - ② INSTALL "L" TYPE CURB AND GUTTER (S-47)
 - ③ INSTALL "A" TYPE ISLAND CURB (S-80)
 - ④ ADJUST EXISTING MANHOLE TO GRADE

- STREET LIGHTING**
- ① STREET LIGHT OR COMMON TRENCH, SEE ELECTRICAL PLANS
 - ② STREET LIGHT, SEE ELECTRICAL PLANS (E-2)

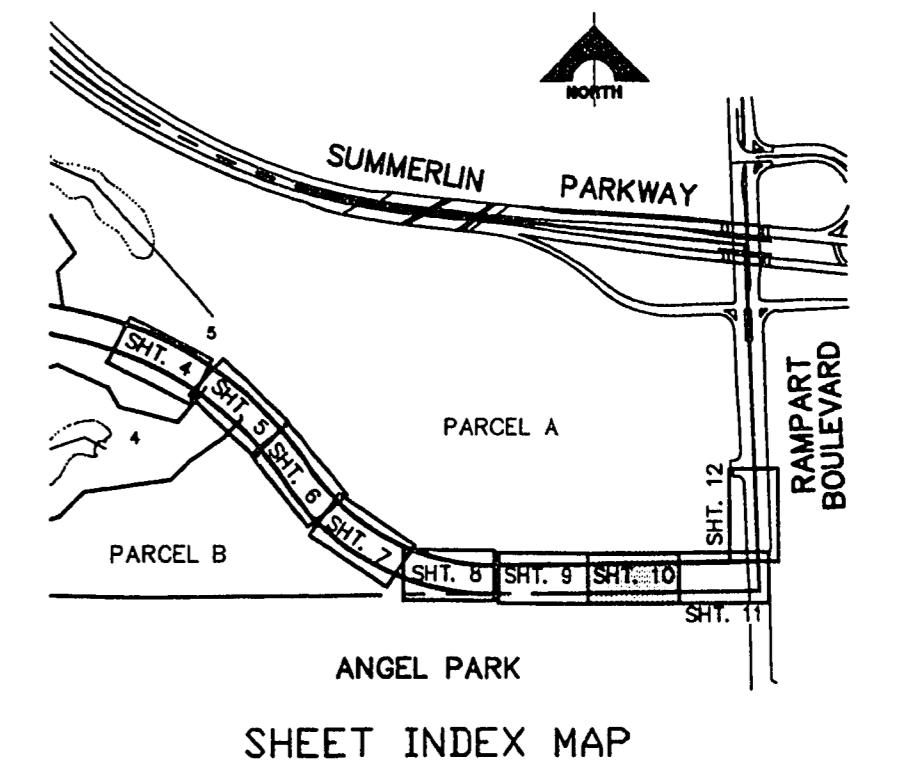
- IRRIGATION**
- ① BANK "A", 1-6" & 2-4" SDR35 PVC (U-18)

RECORDING ENGINEER
BERT A. WALLACE, INC.
G.C. WALLACE, INC.
Engineering/Architecture
1855 SOUTH HANBURY BLVD./LAS VEGAS, NEVADA 89106
DATE: 5/10/96
SHEET NO. 10 OF 15



NOTE: ALL COMMON LOTS AS SHOWN HEREIN TO BE PRIVATELY MAINTAINED BY THE H.O.A.

NOTE TO CONTRACTOR
TOPOGRAPHY SHOWN HEREIN REFLECTS ORIGINAL EXISTING TOPOGRAPHY. ACTUAL FIELD CONDITIONS INCLUDE SITE ROUGH GRADING.



APPROVAL:
LAS VEGAS VALLEY WATER DISTRICT
5/10/96

SHEET
10
SHT 10 OF 15

JOB NO. 62003.204

107-V2464-2