

**CANYON RUN DRIVE  
BANBURY CROSS DRIVE - EAST**

SCALE: HORIZ. 1" = 20'  
VERT. 1" = 5'

**REDUCED PRESSURE PRINCIPLE ASSEMBLY-2**  
 APPROVED REDUCED PRESSURE PRINCIPLE ASSEMBLY(S) SHALL BE INSTALLED PER THE DISTRICT'S STANDARD PLATE N. 11A. NO WATER SHALL BE TAKEN FROM A SERVICE REQUIRING BACKFLOW PREVENTION UNTIL THE REDUCED PRESSURE PRINCIPLE HAS BEEN SUCCESSFULLY TESTED BY THE LVVWD.  
 ANY BLOCK WALL OR OTHER FENCE MATERIAL SHALL BE DESIGNED AND CONSTRUCTED AROUND THE OUTSIDE OF THE EASEMENT(S), SO AS TO ALLOW THE DISTRICT ACCESS FROM THE ADJACENT RIGHT-OF-WAY.

**CURVE DATA** ① INDICATES CURVE NUMBER

CURVE	DELTA	RADIUS	LENGTH	TANGENT
1	08°27'18"	1039.00'	153.32'	76.80'
2	08°27'18"	961.00'	141.81'	71.04'
3	08°27'18"	1008.00'	147.53'	73.92'
4	08°27'18"	1008.33'	148.80'	74.53'
5	08°27'18"	991.67'	146.34'	73.30'

NOTE: CURVE DATA REPRESENTS PARTIAL CURVE, THIS SHEET ONLY.

**CONSTRUCTION NOTES**

- IMPROVEMENTS**
- ① INSTALL A.C. PAVEMENT PER STREET SECTIONS, SHEET NO. 14
  - ② INSTALL "L" TYPE CURB AND GUTTER (S-47/S)
  - ③ INSTALL "A" TYPE ISLAND CURB (S-50/S)
  - ④ ADJUST EXISTING MANHOLE TO GRADE

**WATER**

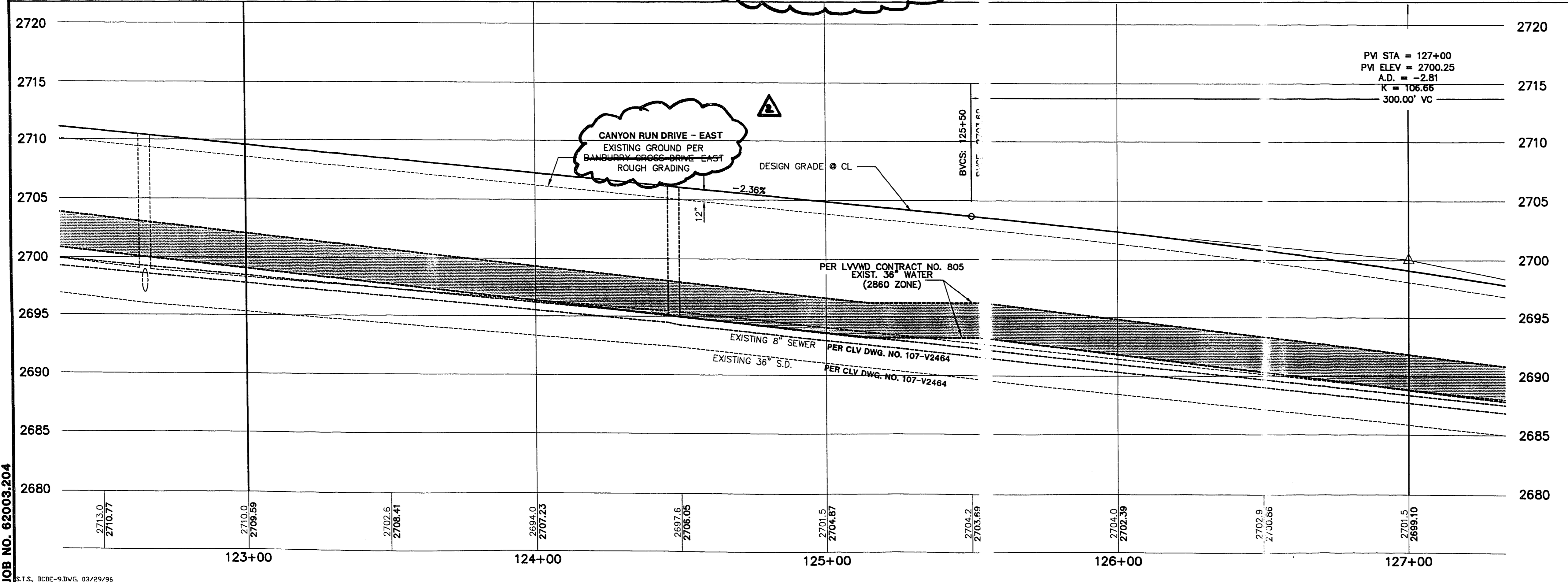
- ① W INSTALL 12" WATER PIPE (U-20/S)
- ② W INSTALL TEMPORARY 2" BLOW-OFF VALVE
- ③ W INSTALL FIRE HYDRANT ASSEMBLY (U-33/S)
- ④ W INSTALL 12" X 12" X 6" TEE
- ⑤ W INSTALL 12" X 8" REDUCER
- ⑥ W INSTALL 8" WATER PIPE (U-20/S)

**STREET LIGHTING**

- ① SL STREET LIGHT OR COMMON TRENCH, SEE ELECTRICAL PLANS
- ② SL STREET LIGHT, SEE ELECTRICAL PLANS (E-2/S)

**IRRIGATION**

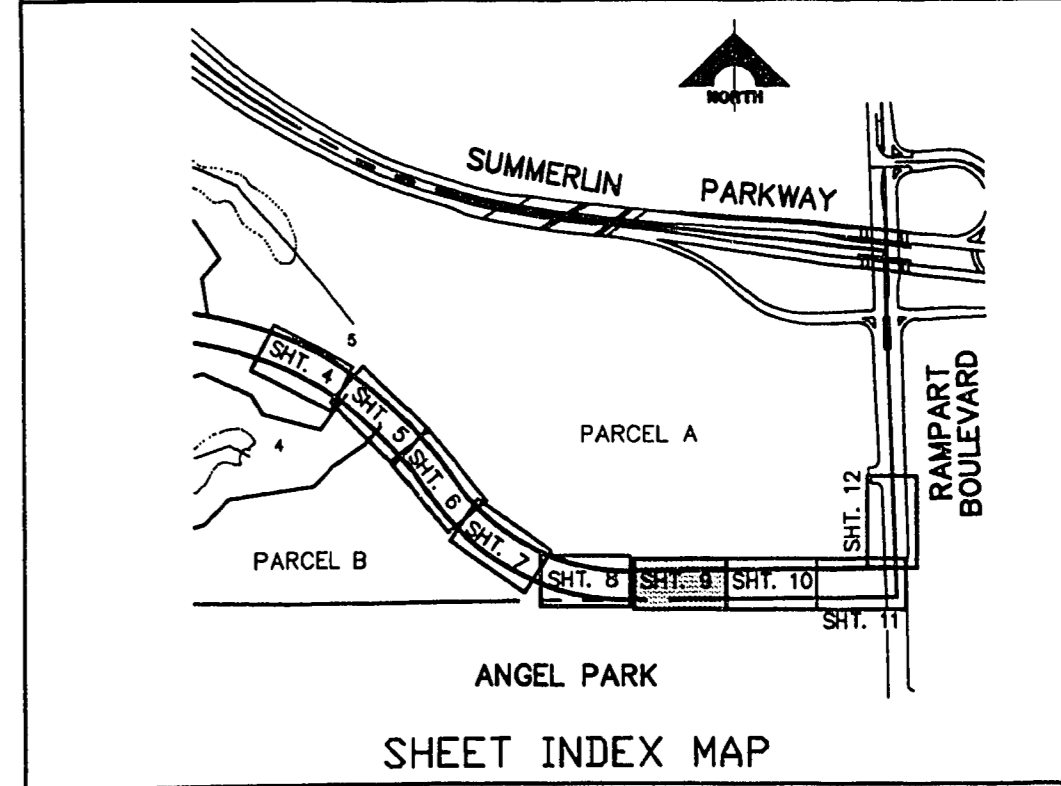
- ① IR BANK "A", 1-6" & 2-4" SDR35 PVC (U-18/S)



PVI STA = 127+00  
 PVI ELEV = 2700.25  
 A.D. = 2.81  
 K = 106.66  
 300.00' VC

NOTE: ALL COMMON LOTS AS SHOWN HEREIN TO BE PRIVATELY MAINTAINED BY THE H.O.A.

**NOTE TO CONTRACTOR**  
 TOPOGRAPHY SHOWN HEREIN REFLECTS ORIGINAL EXISTING TOPOGRAPHY. ACTUAL FIELD CONDITIONS INCLUDE SITE ROUGH GRADING.



APPROVAL:  
 [Signature] 5/1/96  
 LAS VEGAS VALLEY WATER DISTRICT

RECOMMENDED BY: [Signature] DATE: 5/1/96  
 G.C. WALLACE, INC.  
 Engineering/Architecture  
 1855 SOUTH RAINBOW BLVD., LAS VEGAS, NEVADA 89108  
 SHEET 9 OF 15

JOB NO. 62003.204

78-5-07 107-V2464-2