

NOTES

ACREAGE: 28.11 ACRES ±
 TOTAL LOTS: 84 (RESIDENTIAL)
 AND 20 COMMON ELEMENTS
 REFERENCES:
 PLAT - BOOK 91, PAGE 07
 PLAT - BOOK 71, PAGE 13
 PM - FILE 82, PAGE 64

NOTE:
 ALL COMMON ELEMENTS ARE "PUBLIC SEWER, DRAINAGE AND
 INGRESS/EGRESS EASEMENTS TO BE PRIVATELY MAINTAINED."

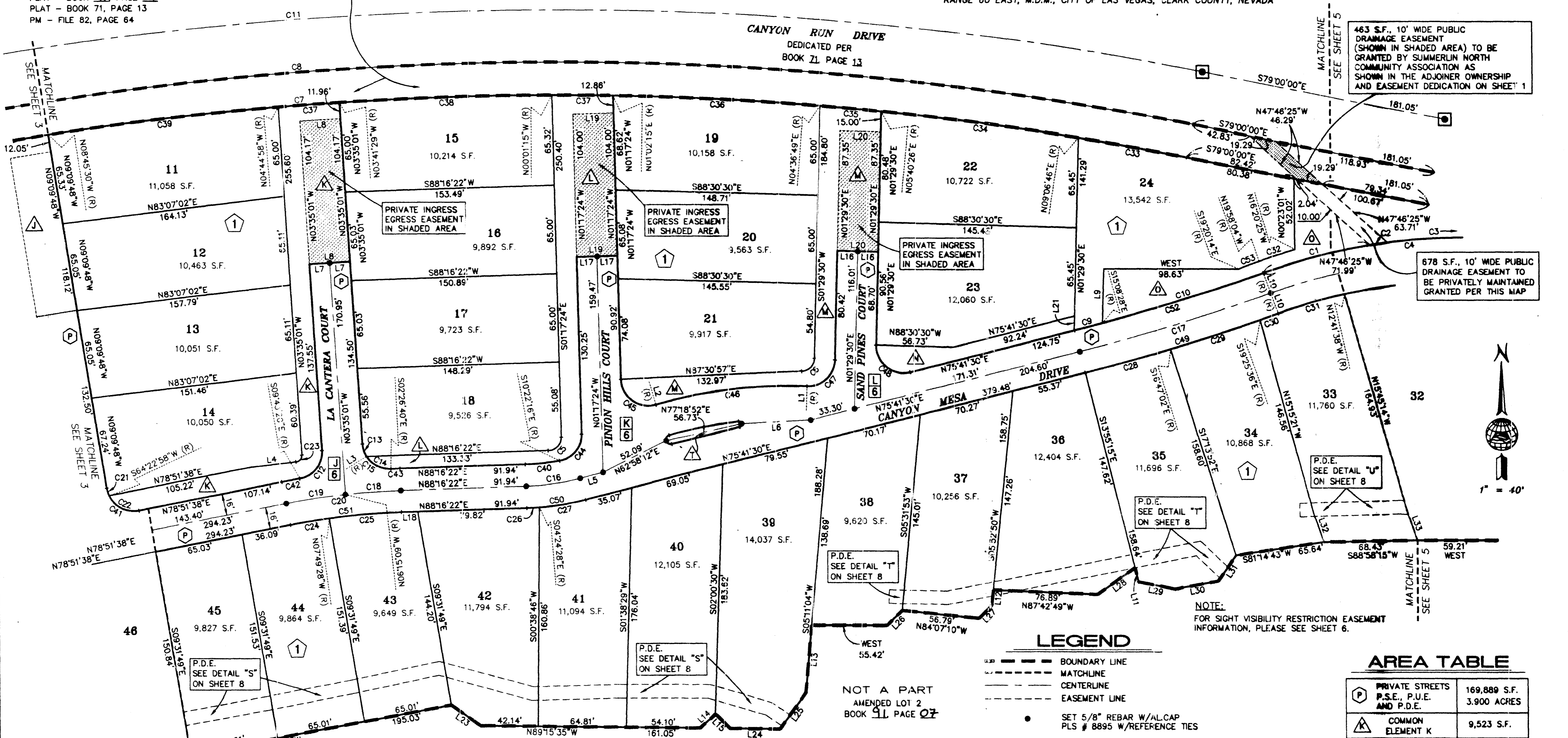
NOTE:
 DIRECT VEHICULAR ACCESS TO CANYON RUN DRIVE THROUGH
 COMMON AREA FROM ABUTTING LOTS IS PROHIBITED.

NOTE:
 ALL REAR CORNERS SHALL BE SET WITH A NAIL AND
 TAG P.L.S. 8895 ON BLOCK WALLS AND ALL FRONT OR
 SIDE CORNERS ADJOINING PUBLIC RIGHT OF WAY SHALL
 BE MARKED BY THE SAWCUTTING OF THE BACK OF CURBS
 ON THE PROLONGATION OF PROPERTY LINES.

**FINAL MAP OF
 SUMMERLIN VILLAGE 3 - UNIT No. 1B
 CANYON TERRACE**

A COMMON INTEREST COMMUNITY
 ALL OF AMENDED LOT 2 OF THE THIRD AMENDED FINAL MAP OF A PORTION OF
 SUMMERLIN VILLAGE 3 - UNIT No. 1B
 BOOK 91 OF PLATS, PAGE 07

SITUATED IN A PORTION OF THE SOUTH HALF (S 1/2) OF SECTION 30
 AND THE SOUTHWEST QUARTER (SW 1/4) OF SECTION 29, TOWNSHIP 20 SOUTH,
 RANGE 60 EAST, M.D.M., CITY OF LAS VEGAS, CLARK COUNTY, NEVADA



463 S.F., 10' WIDE PUBLIC
 DRAINAGE EASEMENT
 (SHOWN IN SHADED AREA) TO BE
 GRANTED BY SUMMERLIN NORTH
 COMMUNITY ASSOCIATION AS
 SHOWN IN THE ADJOINER OWNERSHIP
 AND EASEMENT DEDICATION ON SHEET 1

678 S.F., 10' WIDE PUBLIC
 DRAINAGE EASEMENT TO
 BE PRIVATELY MAINTAINED
 GRANTED PER THIS MAP

P.D.E.
 SEE DETAIL "U"
 ON SHEET 8

P.D.E.
 SEE DETAIL "T"
 ON SHEET 8

P.D.E.
 SEE DETAIL "S"
 ON SHEET 8

P.D.E.
 SEE DETAIL "S"
 ON SHEET 8

NOT A PART
 AMENDED LOT 2
 BOOK 91, PAGE 07

NOT A PART
 AMENDED LOT 2
 BOOK 91, PAGE 07

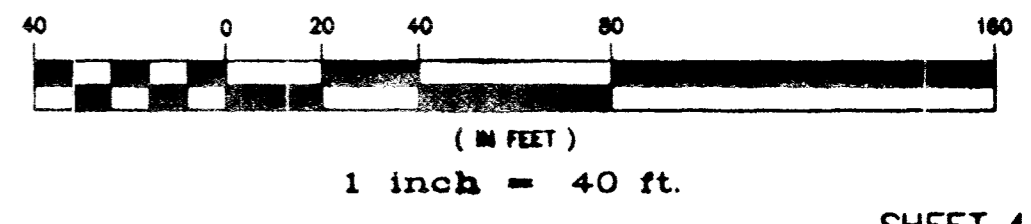
LEGEND

- BOUNDARY LINE
- - - MATCHLINE
- CENTERLINE
- - - EASEMENT LINE
- SET 5/8" REBAR W/ALCAP
 PLS # 8895 W/REFERENCE TIES
- ◻ 5/8" REBAR AND ALCAP STAMPED
 PLS # 9390 W/ALUMINUM REFERENCE TIES
 TO BE SET PER BOOK 21, PAGE 13
- (R) RADIAL BEARING
- 1 LOT NUMBER
- C1 CURVE NUMBER
- L1 LINE NUMBER
- S.F. SQUARE FEET
- APN ASSESSORS PARCEL NUMBER
- P.D.E. PUBLIC DRAINAGE EASEMENT
 TO BE PRIVATELY MAINTAINED
- P.S.E. PUBLIC SEWER EASEMENT
- P.U.E. PUBLIC UTILITY EASEMENT
- 1 BLOCK NUMBER
- SEE DETAIL "K" FOR SIGHT VISIBILITY
 RESTRICTION EASEMENT AND COMMON
 ELEMENT INFORMATION
- ON SHEET 6

AREA TABLE

(P)	PRIVATE STREETS P.S.E., P.U.E. AND P.D.E.	169,889 S.F. 3,900 ACRES
(K)	COMMON ELEMENT K	9,523 S.F.
(L)	COMMON ELEMENT L	8,825 S.F.
(M)	COMMON ELEMENT M	7,992 S.F.
(N)	COMMON ELEMENT N	1,808 S.F.
(O)	COMMON ELEMENT O	10,146 S.F.
(T)	COMMON ELEMENT T	342 S.F.

GRAPHIC SCALE



LINE TABLE

No.	BEARING	DISTANCE	No.	BEARING	DISTANCE
L1	N02°03'48"E	(R)	L18	S88°16'22"W	12.11
L2	N15°59'03"W	(R)	L19	N88°42'36"E	30.00
L3	S57°54'04"W	(R)	L20	S88°30'30"E	30.00
L4	N83°07'02"E	34.34	L21	N01°29'30"E	10.39
L5	N75°41'30"E	17.36	L22	S49°48'24"W	12.75
L6	S86°51'01"W	50.97	L23	N54°31'14"W	26.16
L7	N86°24'59"E	15.00	L24	N89°15'35"W	36.67
L8	N86°24'59"E	30.00	L25	S35°52'59"W	32.88
L9	N01°29'30"E	40.36	L26	S45°00'00"W	15.73
L10	N19°58'04"W	16.00	L27	S44°05'49"W	13.38
L11	N13°55'15"W	11.02	L28	S53°57'24"W	33.92
L12	S05°52'50"W	11.49	L29	N79°04'59"W	26.93
L13	S05°11'04"W	49.59	L30	S79°35'05"W	32.18
L14	S48°11'06"W	15.33	L31	N34°30'05"E	23.23
L15	N45°10'30"W	14.90	L32	N19°14'46"W	22.87
L16	S88°30'30"E	15.00	L33	N19°14'46"W	23.37
L17	N88°42'36"E	15.00			

CURVE TABLE

No.	RADIUS	DELTA	LENGTH	TANGENT	No.	RADIUS	DELTA	LENGTH	TANGENT
C1	432.00'	10°45'40"	81.14'	40.69'	C28	1500.00'	0°22'32"	64.81'	32.41'
C2	432.00'	01°43'01"	12.95'	6.47'	C29	1500.00'	0°23'34"	69.19'	34.60'
C3	432.00'	24°20'27"	183.53'	93.17'	C30	1500.00'	00°32'28"	14.17'	7.08'
C4	432.00'	36°49'09"	277.61'	143.79'	C31	400.00'	07°16'26"	50.78'	25.43'
C5	10.00'	89°33'46"	15.63'	9.92'	C32	441.00'	03°37'39"	27.92'	13.96'
C6	10.00'	86°01'27"	15.01'	9.33'	C33	2437.00'	01°53'14"	80.27'	40.14'
C7	2437.00'	30°45'00"	1307.91'	670.12'	C34	2437.00'	03°26'21"	146.27'	73.16'
C8	246.00'	30°45'00"	1320.79'	676.72'	C35	2437.00'	01°03'37"	45.09'	22.55'
C9	1468.00'	00°49'58"	21.34'	10.67'	C36	2437.00'	03°34'34"	152.10'	76.08'
C10	1468.00'	04°49'37"	123.67'	61.87'	C37	2437.00'	01°03'31"	45.02'	22.51'
C11	2500.00'	30°45'00"	1341.72'	687.44'	C38	2437.00'	03°40'14"	156.12'	78.09'
C12	20.00'	83°51'41"	29.27'	17.96'	C39	2437.00'	04°00'31"	170.51'	85.29'
C13	20.00'	28°30'55"	9.95'	5.08'	C40	168.00'	08°38'38"	25.34'	12.70'
C14	20.00'	60°20'45"	21.06'	11.63'	C41	20.00'	91°58'35"	32.11'	20.70'
C15	20.00'	88°51'40"	31.02'	19.61'	C42	532.00'	01°25'03"	13.16'	6.58'
C16	184.00'	12°34'52"	40.40'	20.28'	C43	532.00'	00°43'03"	6.66'	3.33'
C17	1484.00'	05°39'34"	146.59'	73.35'	C44	20.00'	80°55'08"	28.25'	17.06'
C18	515.00'	04°31'31"	40.75'	20.39'	C45	20.00'	104°41'40"	36.55'	25.92'
C19	515.00'	04°53'14"	44.01'	22.02'	C46	357.00'	18°02'52"	112.45'	56.70'
C20	515.00'	09°24'45"	84.77'	42.48'	C47	20.00'	90°34'18"	31.62'	20.20'
C21	20.00'	16°27'14"	5.74'	2.89'	C48	20.00'	105°48'00"	36.93'	26.44'
C22	20.00'	75°31'21"	26.36'	15.49'	C49	1500.00'	05°39'34"	148.17'	74.14'
C23	5.00'	86°42'03"	7.57'	4.72'	C50	200.00'	12°34'52"	43.92'	22.05'
C24	500.00'	03°18'54"	28.93'	14.47'	C51	500.00'	09°24'45"	82.14'	41.16'
C25	500.00'	06°05'50"	53.21'	26.63'	C52	1468.00'	05°39'34"	145.01'	72.56'
C26	200.00'	02°40'50"	9.36'	4.68'	C53	1459.00'	00°37'50"	16.06'	8.03'
C27	200.00'	09°54'02"	34.56'	17.32'					

POST, BUCKLEY, SCHUH & JERNIGAN
 901 North Green Valley Parkway
 Suite 100
 Henderson, Nevada 89014
 Telephone: 702/263-7275
 Fax: 702/263-7200
 ENGINEERING • PLANNING • SURVEYING • CONSTRUCTION SERVICES

4444-1 B 7/27/14
 R 1 91 Plan 20

