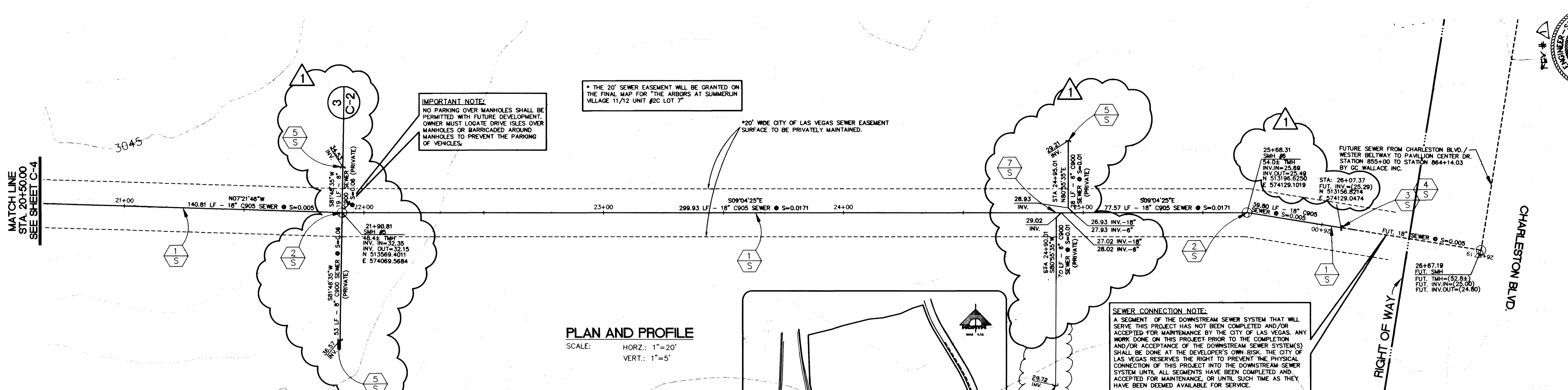


DATE: 12/07/2006



IMPORTANT NOTE:
NO PARKING OVER MANHOLES SHALL BE PERMITTED WITH FUTURE DEVELOPMENT. OWNER MUST LOCATE DRIVE ISLES OVER MANHOLES OR BARRICADED AROUND MANHOLES TO PREVENT THE PARKING OF VEHICLES.

* THE 20' SEWER EASEMENT WILL BE GRANTED ON THE FINAL MAP FOR "THE ARBORS AT SUMMERLIN VILLAGE 11/12 UNIT #2C LOT 7"

*20' WIDE CITY OF LAS VEGAS SEWER EASEMENT SURFACE TO BE PRIVATELY MAINTAINED.

SEWER CONNECTION NOTE:
A SEGMENT OF THE DOWNSTREAM SEWER SYSTEM THAT WILL SERVE THIS PROJECT HAS NOT BEEN COMPLETED AND/OR ACCEPTED FOR MAINTENANCE BY THE CITY OF LAS VEGAS. ANY WORK DONE ON THIS PROJECT PRIOR TO THE COMPLETION AND/OR ACCEPTANCE OF THE DOWNSTREAM SEWER SYSTEM(S) SHALL BE DONE AT THE DEVELOPER'S OWN RISK. THE CITY OF LAS VEGAS RESERVES THE RIGHT TO PREVENT THE PHYSICAL CONNECTION OF THIS PROJECT INTO THE DOWNSTREAM SEWER SYSTEM UNTIL ALL SEGMENTS HAVE BEEN COMPLETED AND ACCEPTED FOR MAINTENANCE, OR UNTIL SUCH TIME AS THEY HAVE BEEN DEEMED AVAILABLE FOR SERVICE.

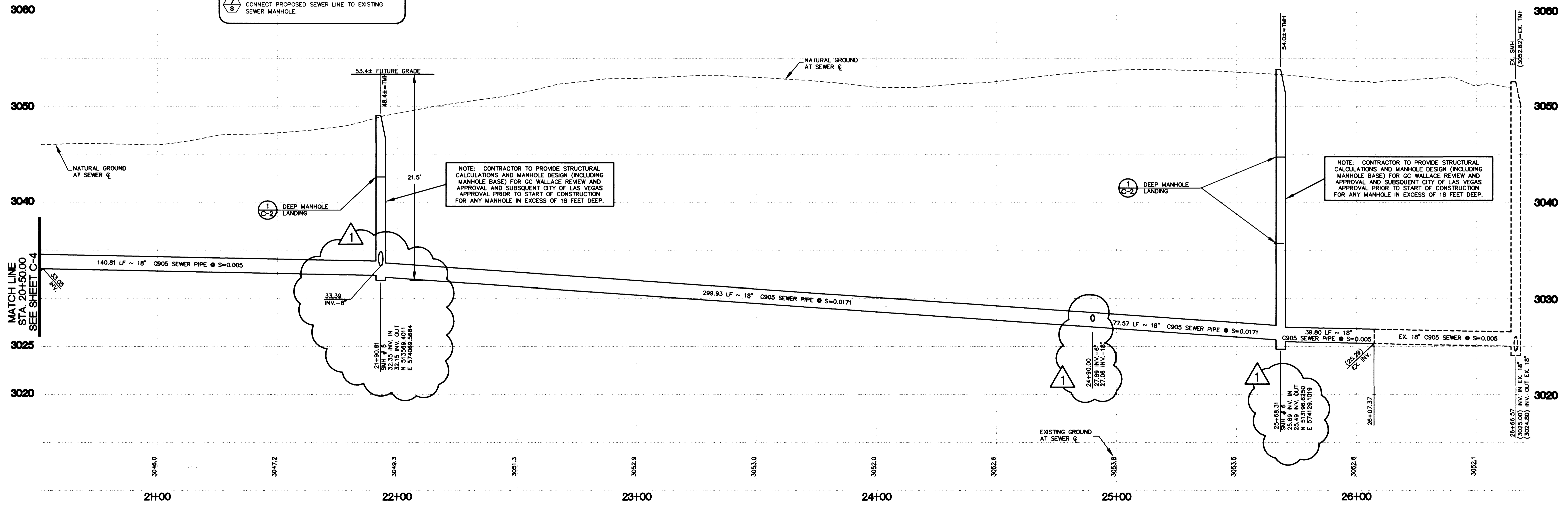
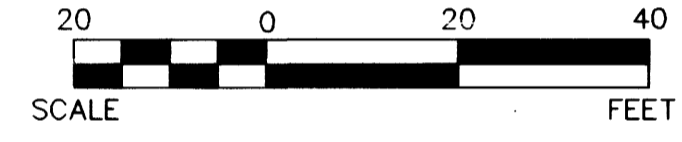
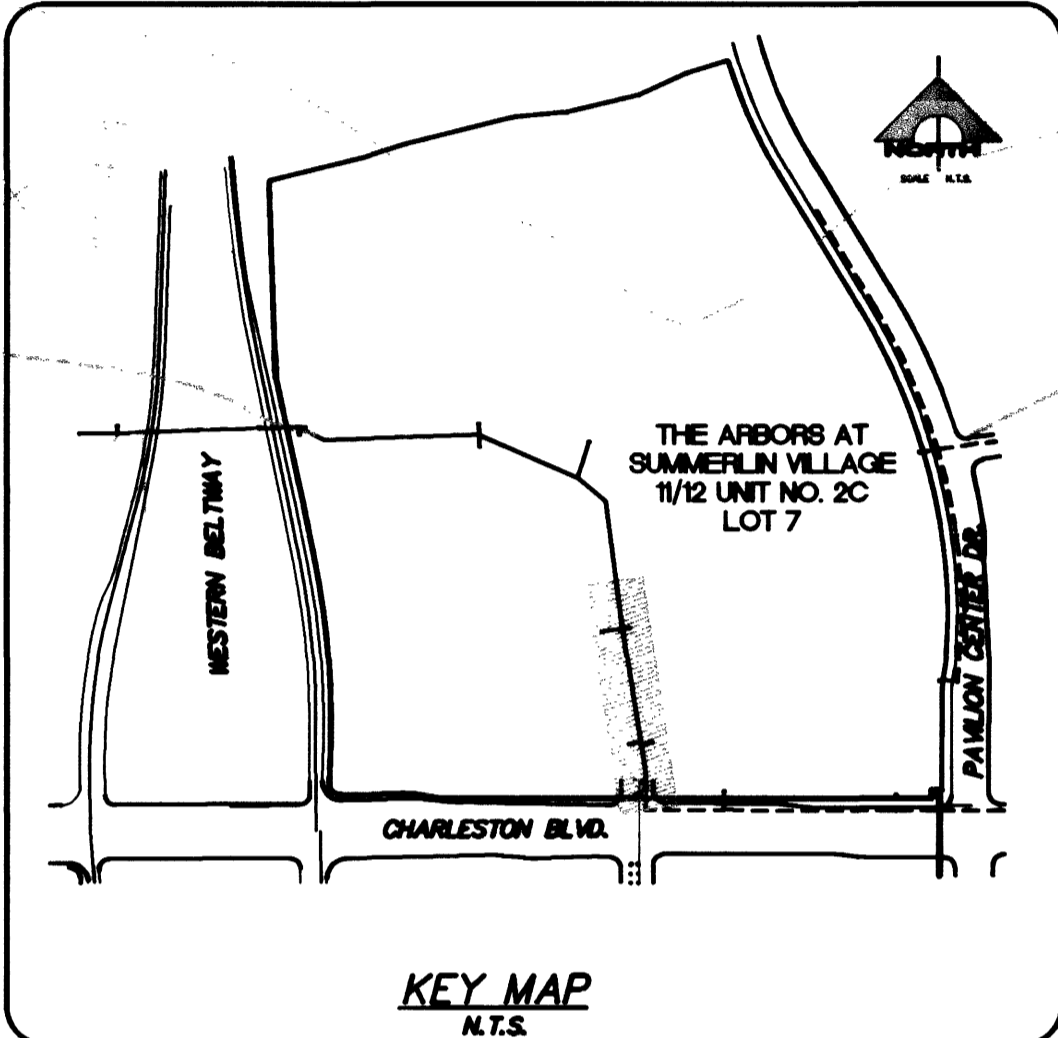
Call before you Dig.
1-800-227-2600
UNDERGROUND SERVICE (USA)

CALL BEFORE YOU DIG OVERHEAD
1-702-593-6111

- CONSTRUCTION NOTES**
- INSTALL 18" C905 SEWER PIPE.
 - INSTALL DEEP SEWER MANHOLE (C-2)
 - EXISTING SEWER LATERAL TO BE REMOVED.
 - CONTRACTOR TO VERIFY EXISTING INVERTS AND LOCATION PRIOR TO CONSTRUCTION. ANY WORK DONE PRIOR TO THIS VERIFICATION SHALL BE THE CONTRACTOR'S RESPONSIBILITY AND COST.
 - INSTALL 8" SEWER PLUG.
 - SEWER PLUG PER SANITATION DISTRICT STANDARDS.
 - CONNECT PROPOSED SEWER LINE TO EXISTING SEWER MANHOLE.

BASIS OF BEARINGS
SOUTH 06°05'51" EAST, BEING THE BEARING OF THE EAST LINE OF SECTION 36, TOWNSHIP 20 SOUTH, RANGE 59 EAST, M.D.M., AS SHOWN BY MAP THEREON ON FILE IN BOOK 74, PAGE 71 OF PLATS, OFFICIAL RECORDS OF CLARK COUNTY, NEVADA.

BENCHMARK
CITY OF LAS VEGAS BENCHMARK 0LV09 36SSW6
SUMMERLIN DATUM ELEVATION = 3014.06 FT.
NAVD 88 ELEVATION = 919.3496 METERS, 3016.23 FT.



NOTE: CONTRACTOR TO PROVIDE STRUCTURAL CALCULATIONS AND MANHOLE DESIGN (INCLUDING MANHOLE BASE) FOR GC WALLACE REVIEW AND APPROVAL AND SUBSEQUENT CITY OF LAS VEGAS APPROVAL PRIOR TO START OF CONSTRUCTION FOR ANY MANHOLE IN EXCESS OF 18 FEET DEEP.

NOTE: CONTRACTOR TO PROVIDE STRUCTURAL CALCULATIONS AND MANHOLE DESIGN (INCLUDING MANHOLE BASE) FOR GC WALLACE REVIEW AND APPROVAL AND SUBSEQUENT CITY OF LAS VEGAS APPROVAL PRIOR TO START OF CONSTRUCTION FOR ANY MANHOLE IN EXCESS OF 18 FEET DEEP.

| NO. | DATE | DESCRIPTION |
|-----|----------|-------------|
| 1 | 12/07/06 | ISSUE DATE |
| 2 | 12/07/06 | REVISION |

DESIGN: [Signature]
CHECK: [Signature]
ISSUE DATE: 12-07-06
PLOT DATE: 12-07-06
PLOT TIME: 11:36:01

G. C. WALLACE, INC.
Engineers/Planners/Surveyors
1655 SOUTH RAINBOW BLVD. LAS VEGAS, NEVADA 89146
TELEPHONE: (702) 804-2000 • FAX: (702) 804-2299
F:\202-1792.dwg\Umpirova\SEWER\CSMR-005.dwg

SUMMERLIN
VILLAGE 20 SEWER INTERCONNECT
SEWER - PLAN AND PROFILE

SHEET
C-5
5 OF 5 SHTS

28871 RS 29614