

**IMPORTANT NOTE:**  
 NO PARKING OVER MANHOLES SHALL BE PERMITTED WITH FUTURE DEVELOPMENT. OWNER MUST LOCATE DRIVE WHEELS OVER MANHOLES OR BARRICADED AROUND MANHOLES TO PREVENT THE PARKING OF VEHICLES.

\* THE 20' SEWER EASEMENT WILL BE GRANTED ON THE FINAL MAP FOR "THE ARBORS AT SUMMERLIN VILLAGE 11/12 UNIT #2C LOT 7"

20' WIDE CITY OF LAS VEGAS SEWER EASEMENT SURFACE TO BE PRIVATELY MAINTAINED.

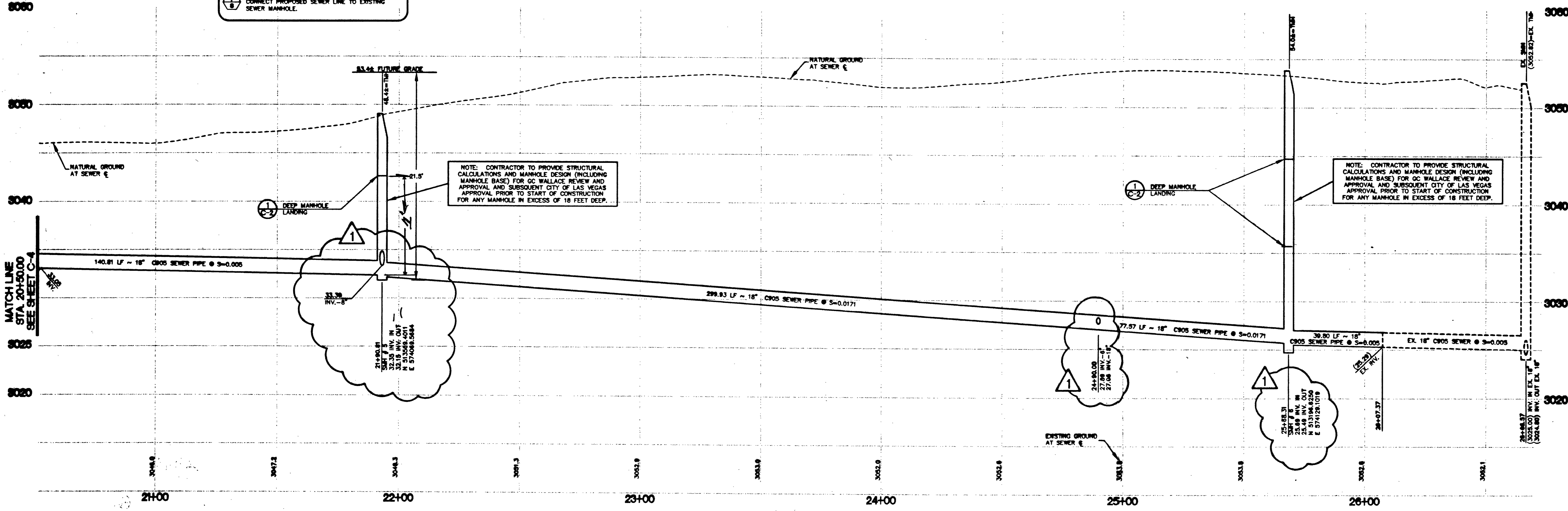
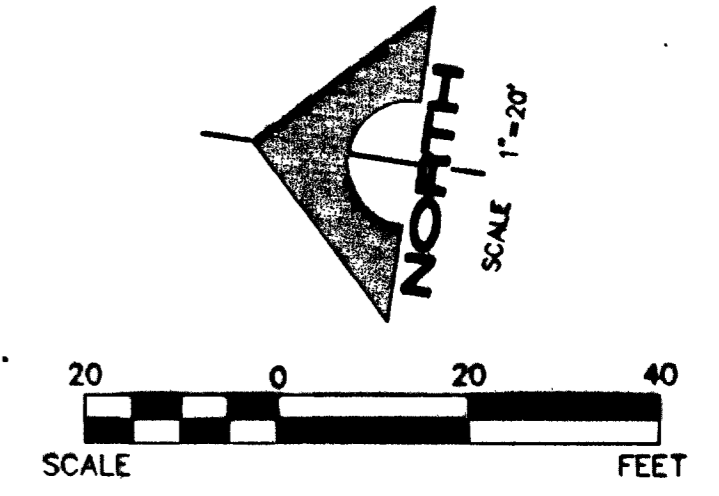
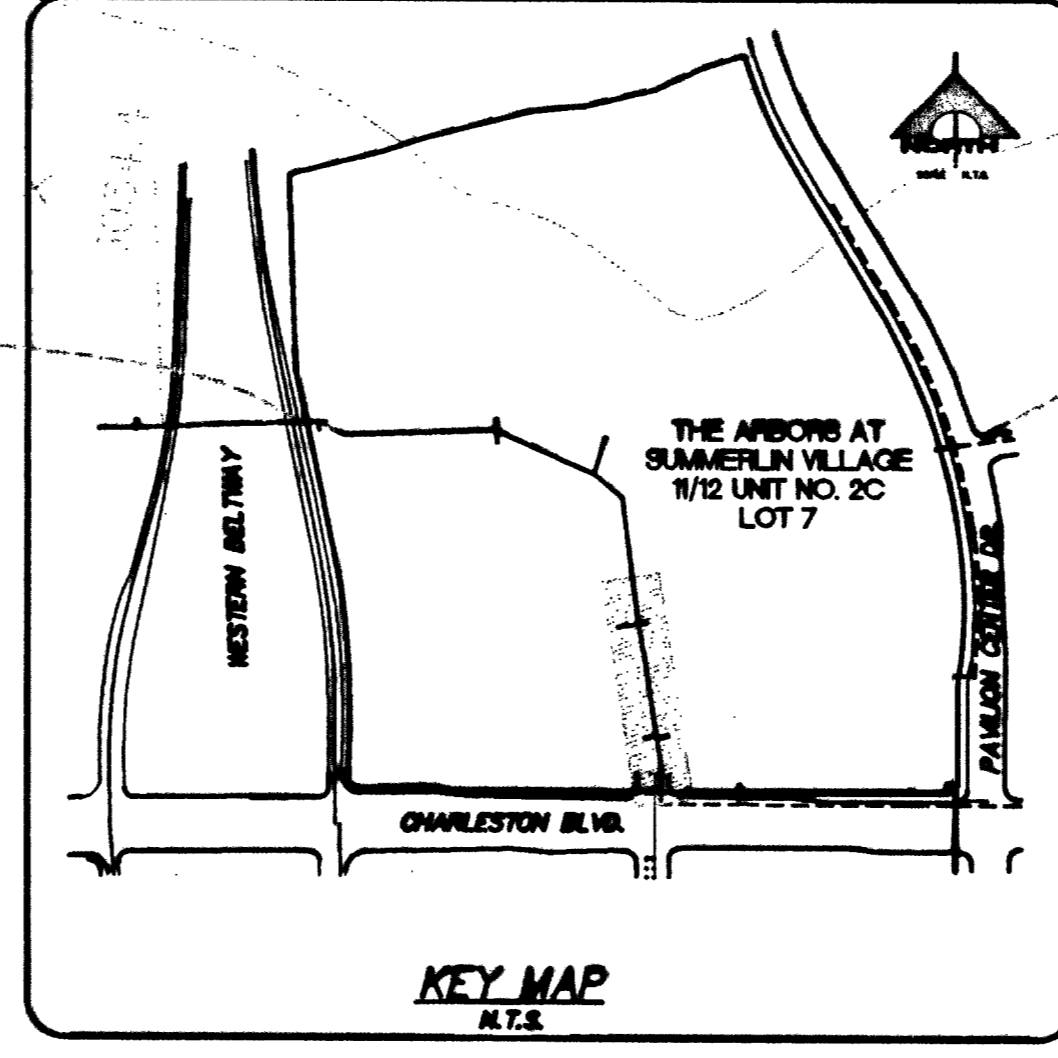
**SEWER CONNECTION NOTE:**  
 A SEGMENT OF THE DOWNSTREAM SEWER SYSTEM THAT WILL SERVE THIS PROJECT HAS NOT BEEN COMPLETED AND/OR ACCEPTED FOR MAINTENANCE BY THE CITY OF LAS VEGAS. ANY WORK DONE ON THIS PROJECT PRIOR TO THE COMPLETION AND/OR ACCEPTANCE OF THE DOWNSTREAM SEWER SYSTEM(S) SHALL BE DONE AT THE DEVELOPER'S OWN RISK. THE CITY OF LAS VEGAS RESERVES THE RIGHT TO PREVENT THE PHYSICAL CONNECTION OF THIS PROJECT INTO THE DOWNSTREAM SEWER SYSTEM UNTIL ALL SEGMENTS HAVE BEEN COMPLETED AND ACCEPTED FOR MAINTENANCE, OR UNTIL SUCH TIME AS THEY HAVE BEEN DEEMED AVAILABLE FOR SERVICE.

**Call before you Dig.**  
 1-800-227-2800  
 1-702-593-6111

- CONSTRUCTION NOTES**
- 1. INSTALL 18" C905 SEWER PIPE.
  - 2. INSTALL DEEP SEWER MANHOLE.
  - 3. EXISTING SEWER LATERAL TO BE REMOVED.
  - 4. CONTRACTOR TO VERIFY EXISTING INVERTS AND LOCATION PRIOR TO CONSTRUCTION. ANY WORK DONE PRIOR TO THIS VERIFICATION SHALL BE THE CONTRACTOR'S RESPONSIBILITY AND COST.
  - 5. INSTALL 6" SEWER PLUG.
  - 6. SEWER PLUG PER SANITATION DISTRICT STANDARDS.
  - 7. CONNECT PROPOSED SEWER LINE TO EXISTING SEWER MANHOLE.

**BASIS OF BEARINGS**  
 SOUTH 00°05'51" EAST, BEING THE BEARING OF THE EAST LINE OF SECTION 36, TOWNSHIP 20 SOUTH, RANGE 59 EAST, M.D.M., AS SHOWN BY MAP THEREOF ON FILE IN BOOK 74, PAGE 71 OF PLATS, OFFICIAL RECORDS OF CLARK COUNTY, NEVADA.

**BENCHMARK**  
 CITY OF LAS VEGAS BENCHMARK QLV09 36SSW6  
 SUMMERLIN DATUM ELEVATION = 3014.06 FT.  
 NAVD 88 ELEVATION = 919.3498 METERS, 3016.23 FT.



**NOTE:** CONTRACTOR TO PROVIDE STRUCTURAL CALCULATIONS AND MANHOLE DESIGN (INCLUDING MANHOLE BASE) FOR GC WALLACE REVIEW AND APPROVAL AND SUBSEQUENT CITY OF LAS VEGAS APPROVAL PRIOR TO START OF CONSTRUCTION FOR ANY MANHOLE IN EXCESS OF 18 FEET DEEP.

**NOTE:** CONTRACTOR TO PROVIDE STRUCTURAL CALCULATIONS AND MANHOLE DESIGN (INCLUDING MANHOLE BASE) FOR GC WALLACE REVIEW AND APPROVAL AND SUBSEQUENT CITY OF LAS VEGAS APPROVAL PRIOR TO START OF CONSTRUCTION FOR ANY MANHOLE IN EXCESS OF 18 FEET DEEP.

28671 RS 29614 RS 59862

**G. C. WALLACE, INC.**  
 Engineers/Planners/Surveyors  
 1244 S. UNIVERSITY BLVD., SUITE 100, LAS VEGAS, NV 89102  
 TELEPHONE: (702) 804-2600 FAX: (702) 804-2248  
 E-MAIL: gwallace@wallaceinc.com

**SUMMERLIN**  
 WALLACE 20 SEWER INTERCONNECT  
 SEWER - PLAN AND PROFILE

SHEET  
**C-5**  
 5 OF 5 SHEETS

DESIGN: \_\_\_\_\_  
 DRAWN: \_\_\_\_\_  
 CHECK: \_\_\_\_\_  
 ISSUE DATE: \_\_\_\_\_  
 PLOT DATE: 12-07-00  
 PLOT TIME: 11:36:01

ISSUE DATE: \_\_\_\_\_