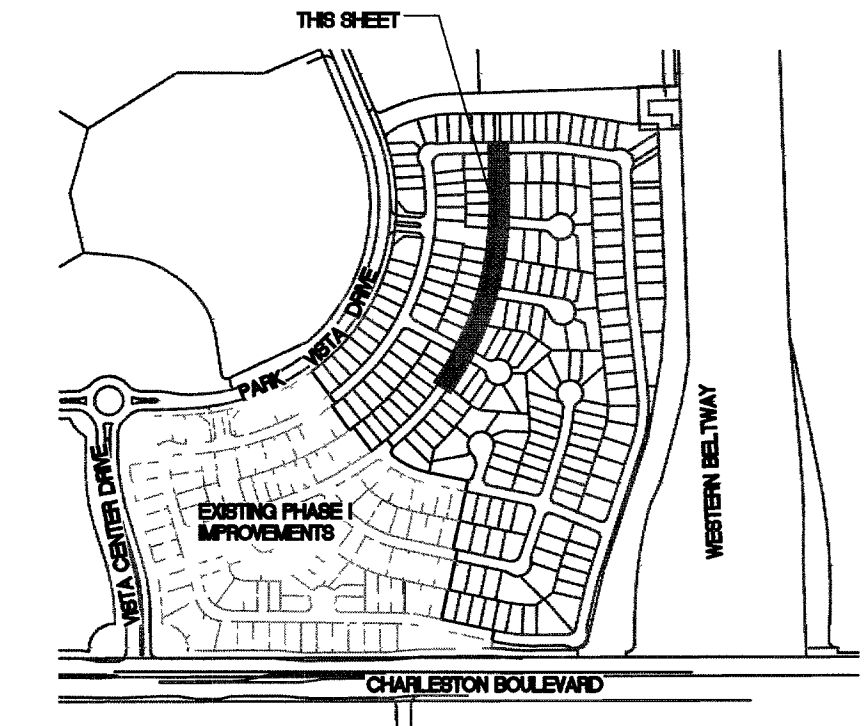


ALL SEWER/STORM DRAINS CROSSING WATER LINES MUST CONFORM TO SECTION 2.19 OF THE UNIFORM DESIGN AND CONSTRUCTION STANDARDS FOR POTABLE WATER SYSTEMS (UDACS) FOR WATER AND STORM MAIN CROSSINGS AND CLEARANCES. ESN.064 REVISED 06/01/04



**CENTERLINE CURVE DATA TABLE**

DELTA	RADIUS	LENGTH	TANGENT	
J	31°29'46"	1084.50'	596.16'	305.82'

**CL TANGENT DATA TABLE**

BEARING	LENGTH
I	N00°30'16"W 189.27'

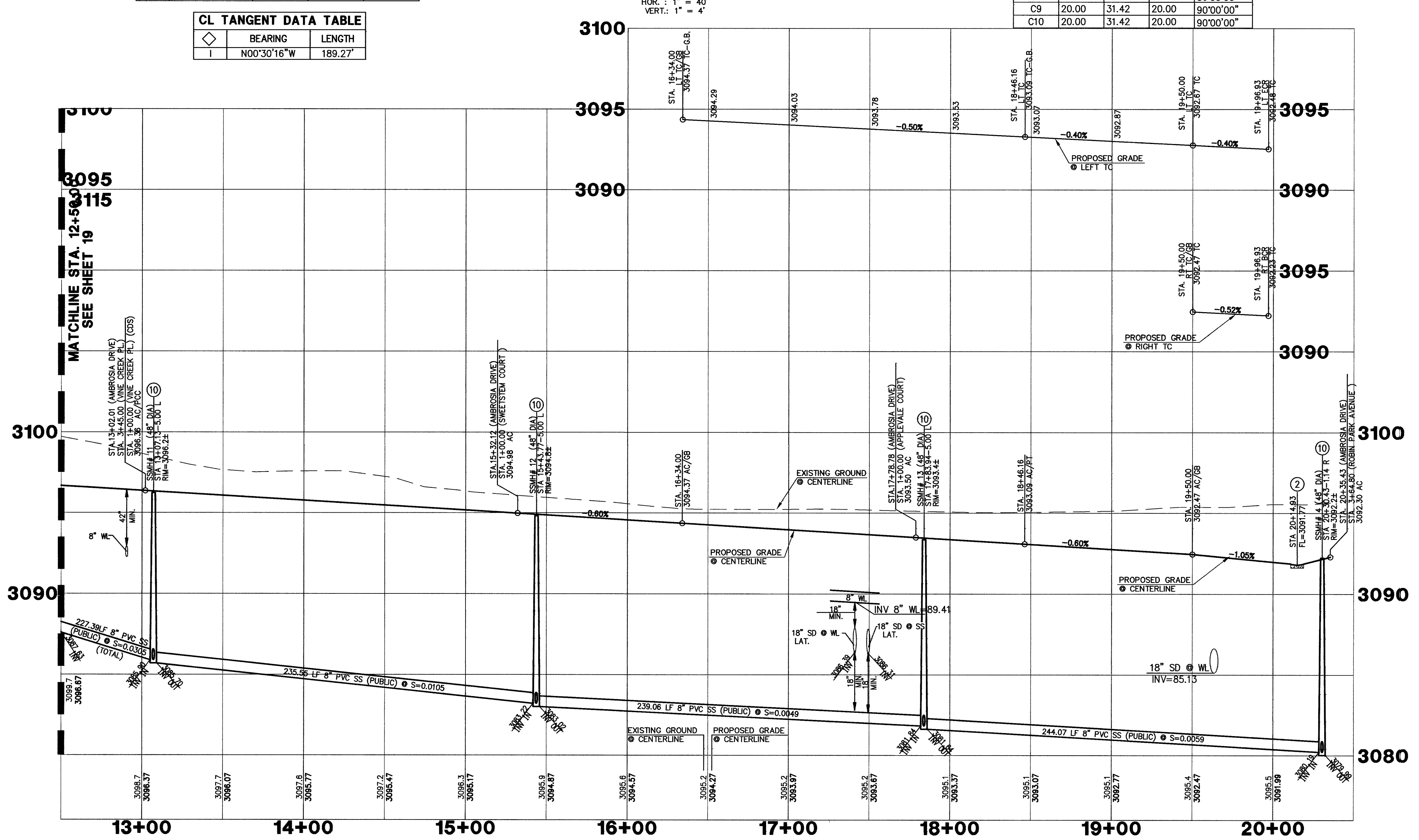
**CURB RETURN DATA TABLE**

CURVE	RADIUS	LENGTH	TANGENT	DELTA
C1	20.00	31.09	19.68	89°03'47"
C2	20.00	32.15	20.75	92°06'34"
C3	20.00	32.15	20.75	92°06'34"
C4	20.00	30.37	18.98	87°00'25"
C5	20.00	28.54	17.31	81°45'26"
C6	20.00	32.91	21.56	94°17'23"
C7	20.00	31.24	19.83	89°30'15"
C8	20.00	30.22	18.84	86°33'55"
C9	20.00	31.42	20.00	90°00'00"
C10	20.00	31.42	20.00	90°00'00"

**SEWER DATA TABLE**

DELTA	RADIUS	LENGTH	TANGENT	
E	03°01'06"	1079.50'	56.87'	28.44'
F	12°30'08"	1079.50'	235.55'	118.25'
G	12°41'18"	1079.50'	239.06'	120.02'
H	03°17'14"	1079.50'	61.93'	30.98'

**AMBROSIA DRIVE (PUBLIC)  
STA. 12+500.00 - STA. 20+35.43**



**KEY MAP**  
NOT TO SCALE

**BENCHMARK**  
RIVET AND PLATE IN TOP OF CURB AT NW CORNER OF PAVILION CENTER AND PALO BREA DR (NO. 0LV09 36W4)  
3030.95 NAVD 1988 DATUM (923.834 M)

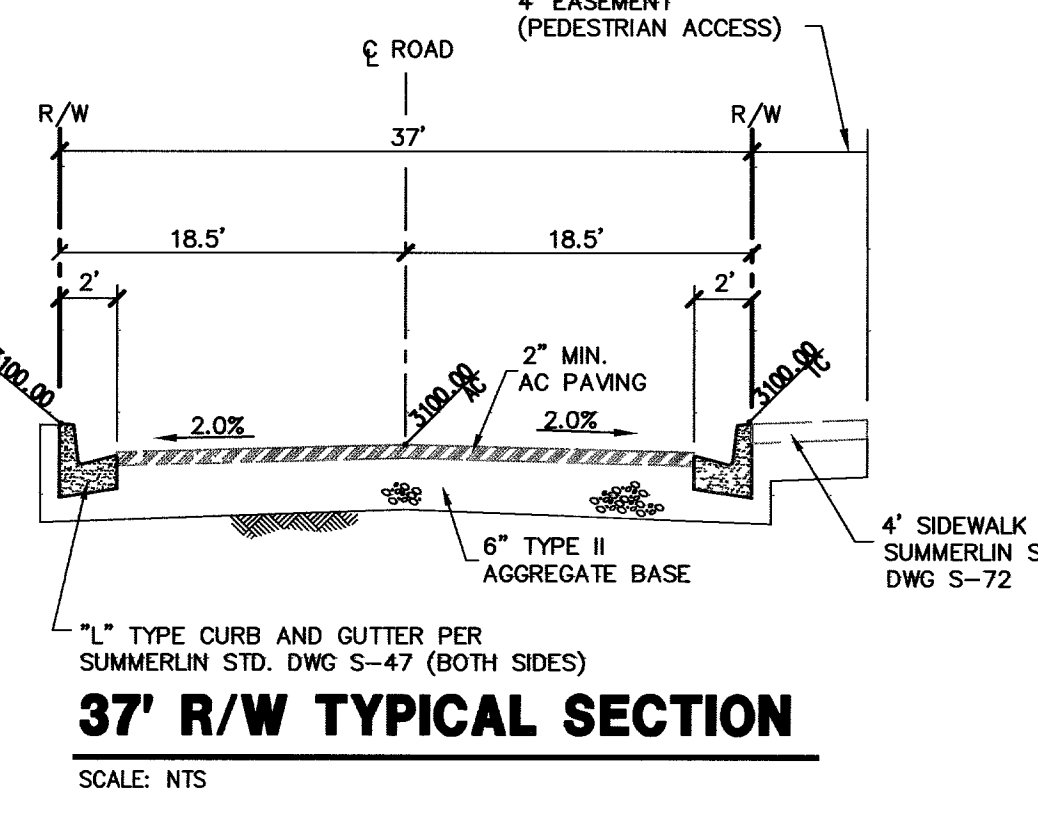
**BASIS OF BEARINGS**  
NORTH 89°45'05" EAST BEING THE SOUTH LINE OF THE SOUTHWEST QUARTER (SW 1/4) OF SECTION 35, TOWNSHIP 20, RANGE 59 EAST, M.D.M. AS SHOWN BY MAP ON FILE IN FILE 91, PAGE 28 OF PARCEL MAPS IN THE CLARK COUNTY RECORDER'S OFFICE, CLARK COUNTY, NEVADA.

**GENERAL NOTES**

1. ALL STATIONING IS CENTERLINE STATION UNLESS OTHERWISE NOTED.
2. SEWER LENGTHS ARE FROM CENTER OF MANHOLE TO CENTER OF MANHOLE
3. SEE APPROVED FINAL MAP FOR DIMENSIONS, CENTERLINE BEARINGS AND DISTANCES
4. FOR CUL-DE-SAC AND KNUCKLE CURVE DATA, REFER TO CORRESPONDING HORIZONTAL CONTROL SHEET.

**CONSTRUCTION NOTES**

1. CONSTRUCT "L" TYPE CURB AND GUTTER PER SUMMERLIN STD DWG #S-47
2. CONSTRUCT 6" GROSS GUTTER PER SUMMERLIN STD DWG #S-64
3. CONSTRUCT 4" SIDEWALK PER SUMMERLIN STD DWG #S-72 (PRIVATE)
4. CONSTRUCT SIDEWALK RAMP PER C.C.A.S.D. #235 (PRIVATE)
5. CONSTRUCT 2" AC OVER 6" AB PER TYPICAL SECTION HEREON
6. CONSTRUCT SIDEWALK DRAIN PER SUMMERLIN STD. DETAIL D-31
7. CONSTRUCT "A" TYPE ISLAND CURB PER SUMMERLIN STD. DETAIL S-50
8. NOT USED
9. NOT USED
10. INSTALL 48" DIA. STANDARD MANHOLE PER D.C.S.W.C.S. #SD-1
11. INSTALL 8" PVC SANITARY SEWER
12. ADJUST MANHOLE TO GRADE PER D.C.S.W.C.S. #SD-38



5-31-05 DATE  
LAS VEGAS VALLEY WATER DISTRICT PROJ. 110523  
107 Y 4836-2

REV.	DATE	DESCRIPTION	APPROVE

**SUMMERLIN**  
PLANNING • DESIGN • CONSTRUCTION  
8835 WEST FLAMINGO ROAD  
LAS VEGAS, NEVADA 89147-4884  
702.364.0080 • FAX 702.364.0789 • WWW.RBF.COM

**RBF**  
CONSULTING

**AMBROSIA DRIVE  
PLAN AND PROFILE  
12+50.00 - 20+35.43  
VILLAGE 20 AT SUMMERLIN  
PARCELS E,F, & G**

SHEET	DATE	TITLE	SCALE
5/13/05	5/13/05	5/13/05	1" = 40'
CTC	TLK	PROJECT NO. 100450	50-100450

SEAL  
MARK W. JOHNSON  
Exp. 6/30/05  
No. 12729  
CIVIL