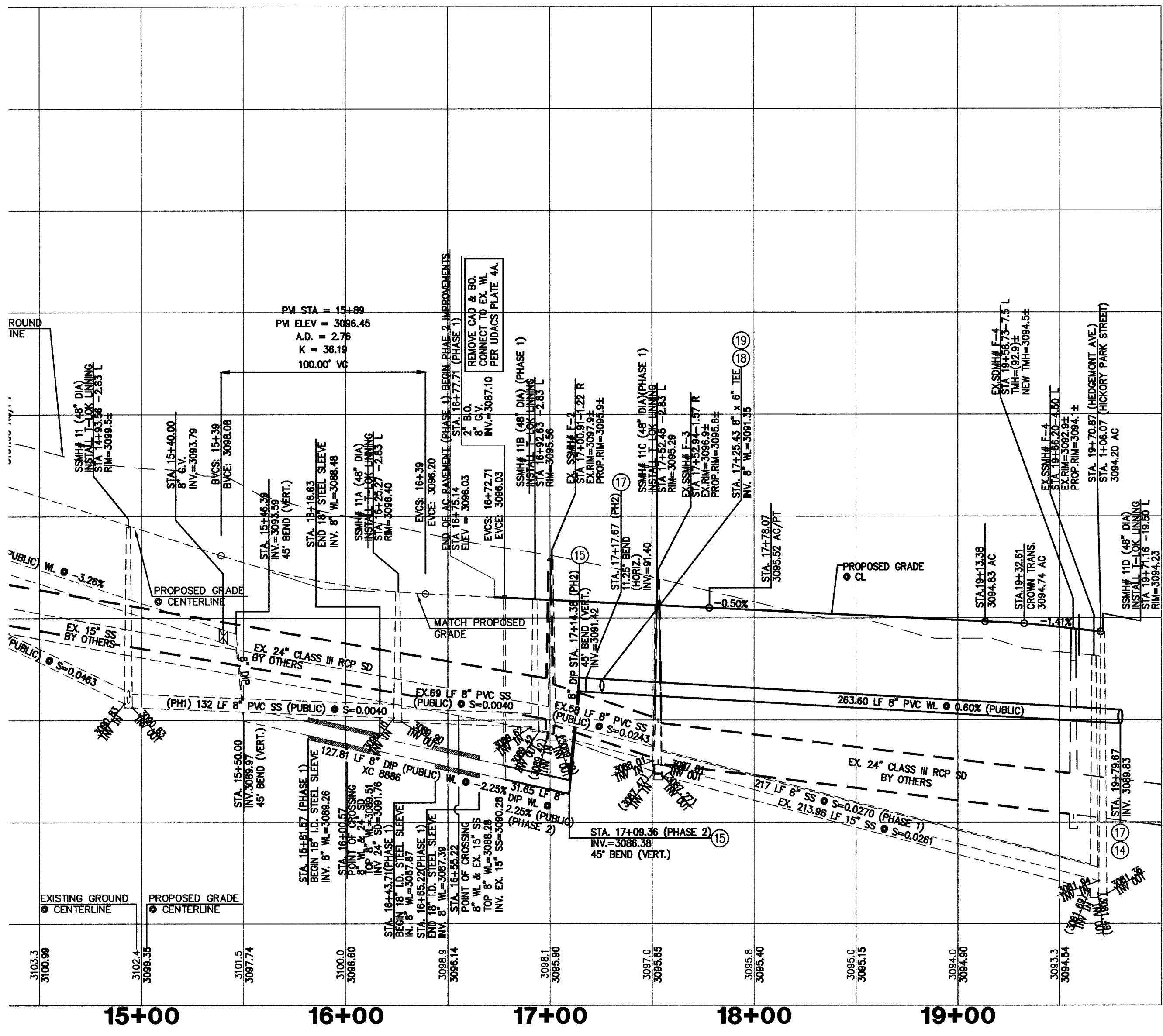
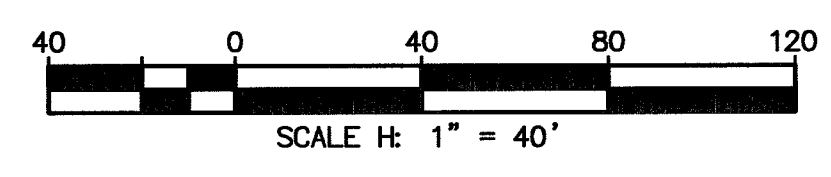


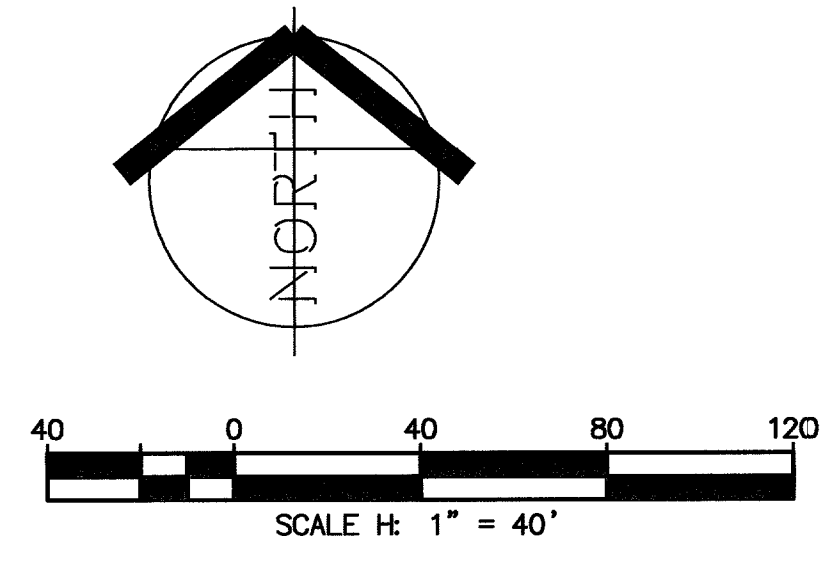
**HEDGEMONT AVENUE (PUBLIC)  
STA. 16+72.21 - STA. 19+70.09**

HOR. : 1" = 40'  
VERT.: 1" = 4'



3120  
3110  
3100  
3090

15+00 16+00 17+00 18+00 19+00



**CONSTRUCTION NOTES**

1. CONSTRUCT "L" TYPE CURB AND GUTTER PER SUMMERLIN STD DWG #S-47
2. CONSTRUCT 8" CROSS GUTTER PER SUMMERLIN STD DWG #S-64
3. CONSTRUCT 4" SIDEWALK PER SUMMERLIN STD DWG #S-72 (PRIVATE)
4. CONSTRUCT SIDEWALK RAMP PER C.C.A.S.D. #235 (PRIVATE)
5. CONSTRUCT 2" AC OVER 6" AB PER TYPICAL SECTION HEREON
6. CONSTRUCT SIDEWALK DRAIN PER SUMMERLIN STD. DETAIL D-31
7. CONSTRUCT "A" TYPE ISLAND CURB PER SUMMERLIN STD. DETAIL S-50
8. NOT USED
9. NOT USED
10. INSTALL 48" DIA. STANDARD MANHOLE PER D.C.S.W.C.S. DWG #SD-1
11. INSTALL 8" PVC SANITARY SEWER
12. ADJUST EXISTING MANHOLE TO GRADE PER D.C.S.W.C.S. #SD-38
13. INSTALL FIRE HYDRANT ASSEMBLY PER U.D.A.C.S. PLATE 7
14. INSTALL 90° BEND
15. INSTALL 45° BEND
16. INSTALL 22.5° BEND
17. INSTALL 11.25° BEND
18. 8" x 6" TEE
19. 6" GATE VALVE

**BENCHMARK**

RIVET AND PLATE IN TOP OF CURB AT NW CORNER OF PAVILION CENTER AND PALO BREA DR. (NO. OLVO9 36W4)  
3030.95 NAVD 1988 DATUM (923.8341 M)

**BASIS OF BEARINGS**

NORTH 89°45'05" EAST BEING THE SOUTH LINE OF THE SOUTHWEST QUARTER (SW 1/4) OF SECTION 35, TOWNSHIP 20, RANGE 59 EAST, M.D.M. AS SHOWN BY MAP ON FILE IN FILE 91, PAGE 28 OF PARCEL MAPS IN THE CLARK COUNTY RECORDER'S OFFICE, CLARK COUNTY, NEVADA.

**GENERAL NOTES**

1. ALL STATIONING IS CENTERLINE STATION UNLESS OTHERWISE NOTED.
2. SEWER LENGTHS ARE FROM CENTER OF MANHOLE TO CENTER OF MANHOLE
3. SEE APPROVED FINAL MAP FOR DIMENSIONS, CENTERLINE BEARINGS AND DISTANCES.

ALL SEWER/STORM DRAINS CROSSING WATER LINES MUST CONFORM TO SECTION 2.19 OF THE UNIFORM DESIGN AND CONSTRUCTION STANDARDS FOR POTABLE WATER SYSTEMS (UDACS) FOR WATER AND STORM MAIN CROSSINGS AND CLEARANCES. ESN.064 REVISED 06/01/04

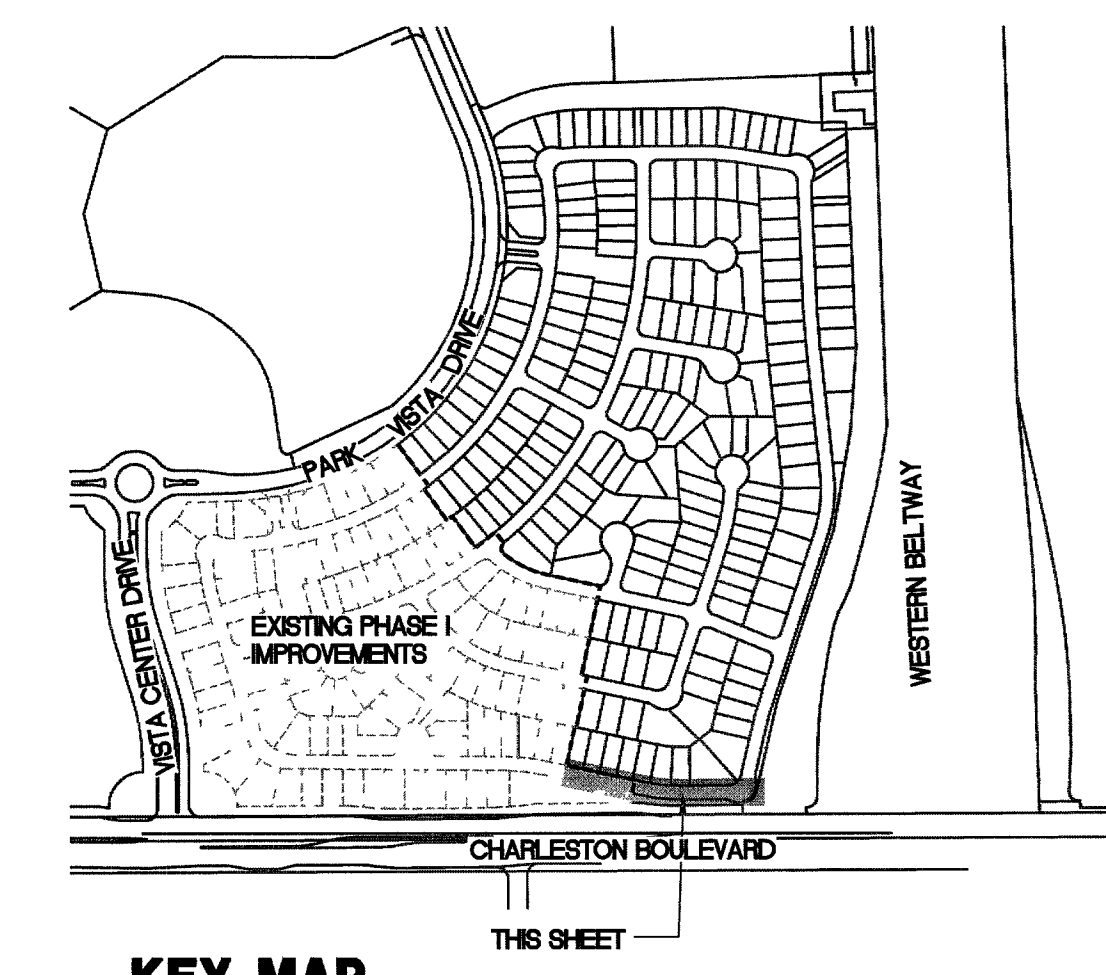
LINE DATA TABLE		
	BEARING	LENGTH
D	N89°24'28"W	78.90'
E	N78°00'10"W	241.39'
F	N08°37'27"W	163.15'

BCR CURVE TABLE				
NO.	DELTA	RADIUS	LENGTH	TANGENT
C1	91°11'35"	20.00'	31.83'	20.42'
C2	94°47'24"	20.00'	33.09'	21.75'
C3	88°00'51"	30.00'	46.08'	28.98'
C4	84°06'20"	30.00'	44.04'	27.06'

CURB RETURN DATA TABLE				
CURVE	RADIUS	LENGTH	TANGENT	DELTA
C1	30.00	40.08	23.67	76°32'45"
C2	50.00	22.90	11.66	26°14'44"
C3	47.00	105.85	98.62	129°02'13"

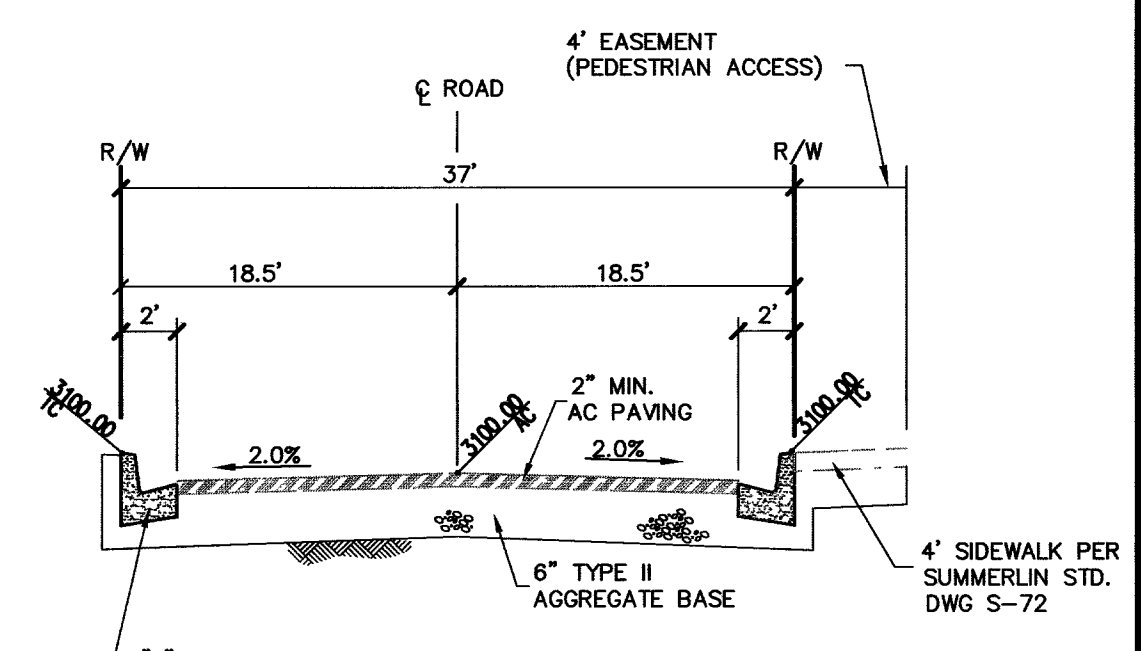
CENTERLINE CURVE DATA TABLE				
	DELTA	RADIUS	LENGTH	TANGENT
H	12°41'00"	465.00'	102.93'	51.68'

CL TANGENT DATA TABLE		
	BEARING	LENGTH
G	N78°00'10"W	2.43'
H	N89°18'50"E	192.80'



**KEY MAP**

NOT TO SCALE



**37' R/W TYPICAL SECTION**

SCALE: NTS

REV.	DATE	DESCRIPTION	APPROVE.

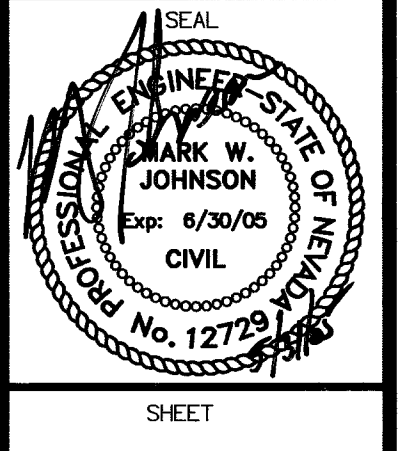
**SUMMERLIN**  
PLANNING ■ DESIGN ■ CONSTRUCTION  
6805 WEST FLAMINGO ROAD  
LAS VEGAS, NEVADA 89147-4834  
702.384.0980 • FAX 702.384.0988 • WWW.RBF.COM

**RBF**  
CONSULTING

**HEDGEMONT AVENUE  
STA. 16+72.21 - STA. 19+70.09  
PLAN AND PROFILE**

**VILLAGE 20 AT SUMMERLIN  
PARCEL E, F & G**

DRWN BY: TLK	5/13/05
DESIGNED BY: MWJ	5/13/05
CHECKED BY: MWJ	5/13/05
PROJECT NO: 50-100450	SCALE: 1" = 40'



*Mark W. Johnson*  
LAS VEGAS VALLEY WATER DISTRICT  
PROJ. 110523  
10744836-2  
DATE: 5-31-05

**21**  
21 OF 39 SHEETS