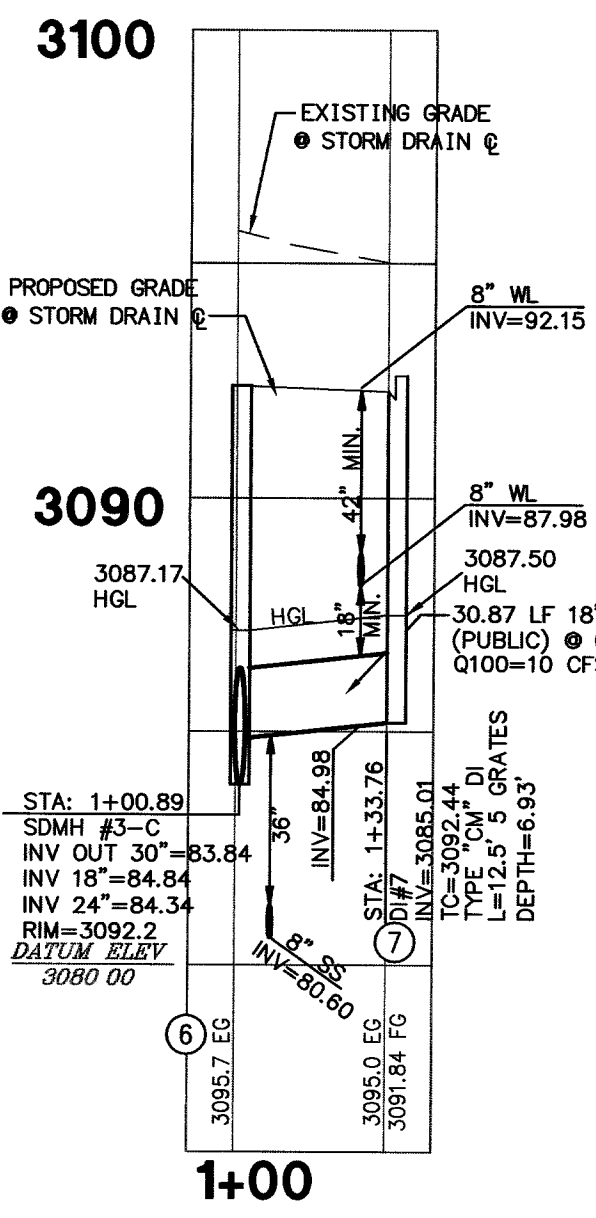
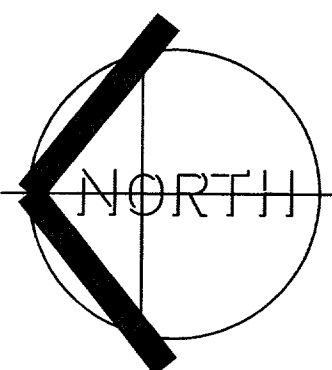


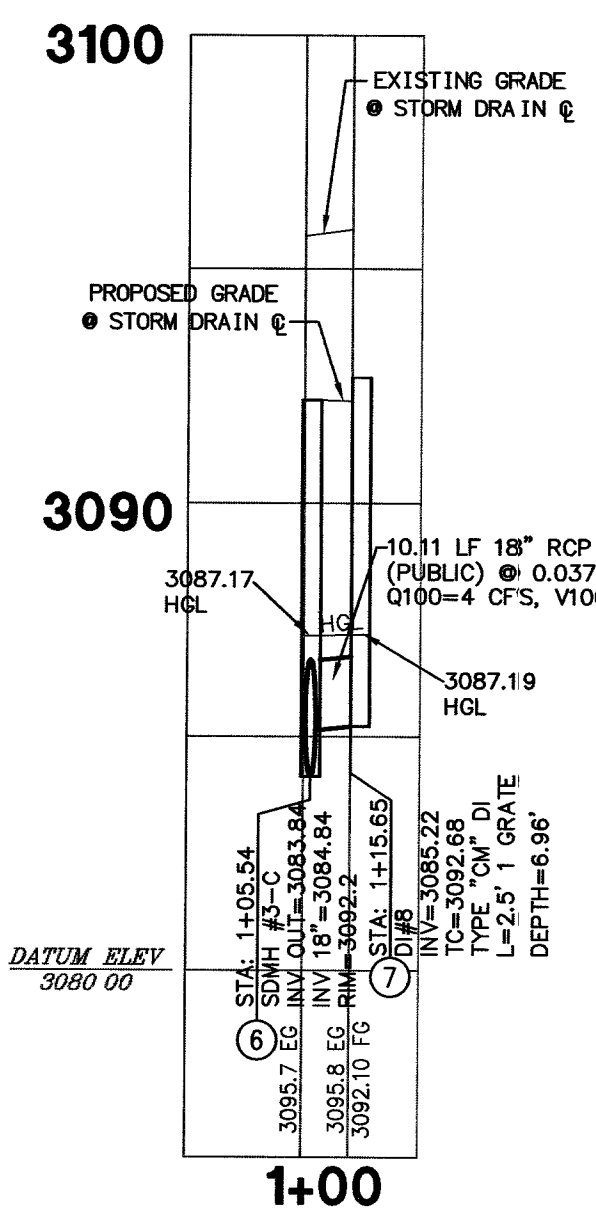
**STORM DRAIN LINE 3**

SCALE H: 1" = 40'  
SCALE V: 1" = 4'



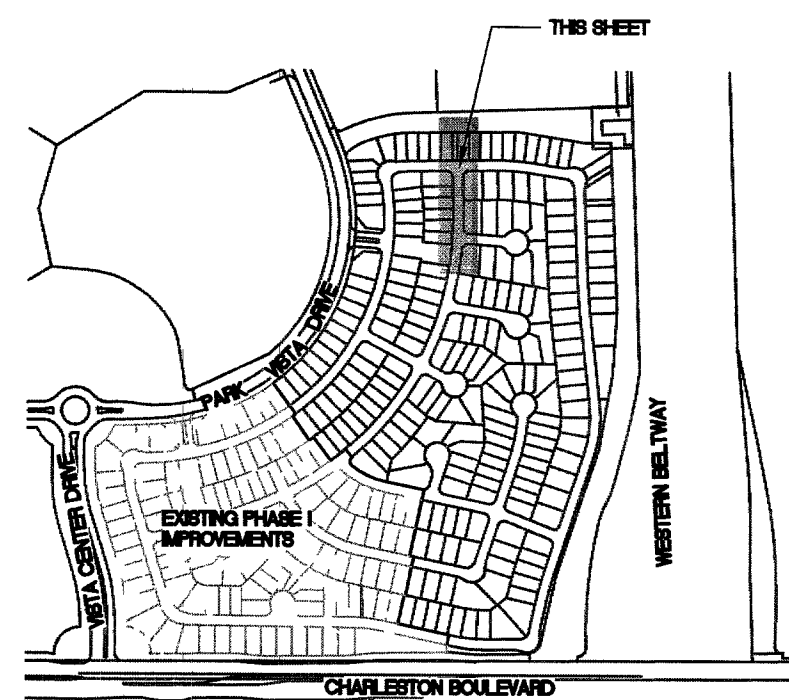
**DI-7 TO MH 3-C**

SCALE H: 1" = 40'  
SCALE V: 1" = 4'



**DI-8 TO MH 3-C**

SCALE H: 1" = 40'  
SCALE V: 1" = 4'



**KEY MAP**

NOT TO SCALE

**BENCHMARK**

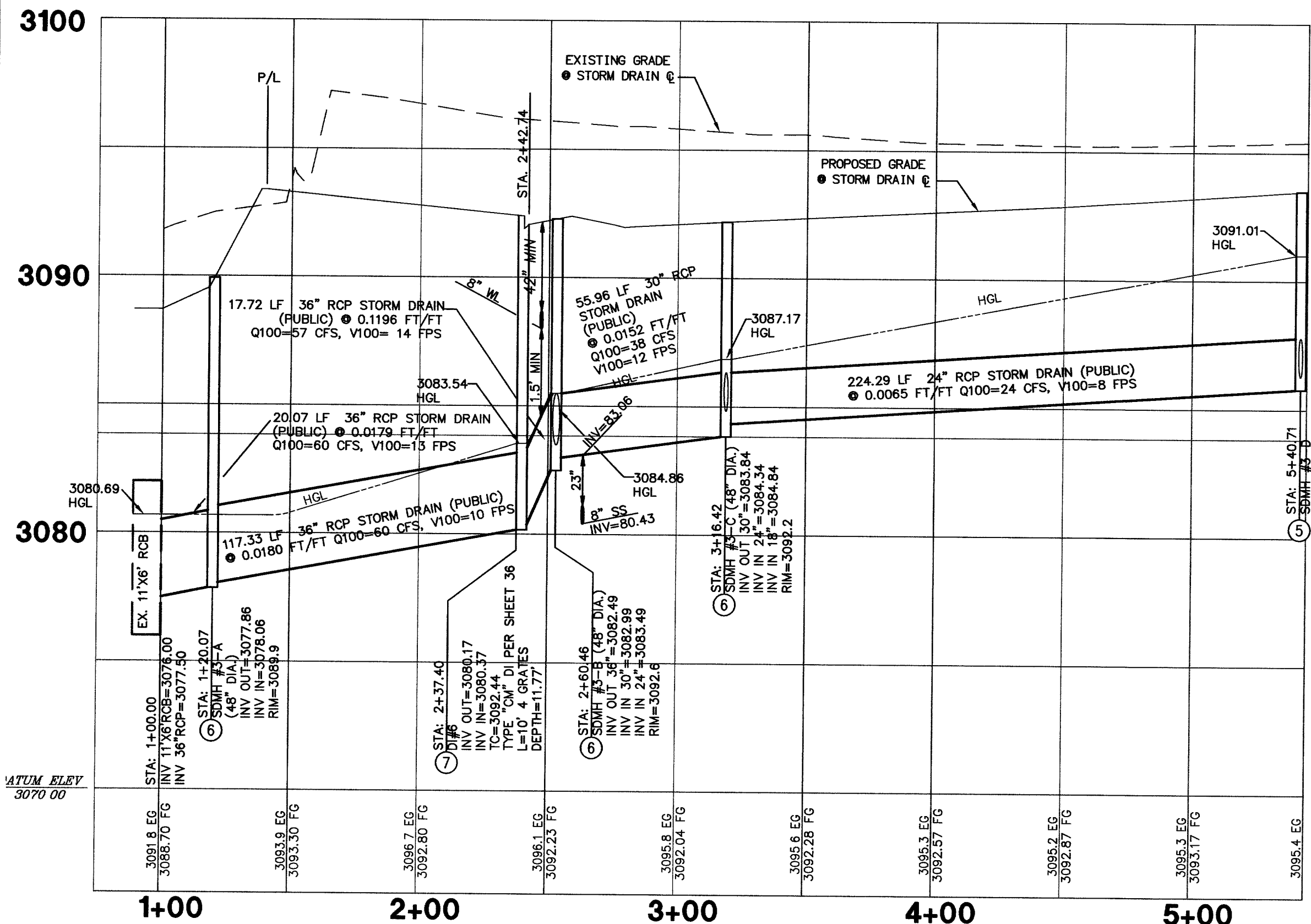
Rivet and Plate in Top of Curb at NW Corner of Pavilion Center and Palo Brea Dr (No. 01.09 36W4)  
3030.95 NAVD 1988 DATUM (923.834 M)

**BASIS OF BEARINGS**

NORTH 89°45'05" EAST BEING THE SOUTH LINE OF THE SOUTHWEST QUARTER (SW 1/4) OF SECTION 35, TOWNSHIP 20, RANGE 59 EAST, M.D.M. AS SHOWN BY MAP ON FILE IN FILE 91, PAGE 28 OF PARCEL MAPS IN THE CLARK COUNTY RECORDER'S OFFICE, CLARK COUNTY, NEVADA.

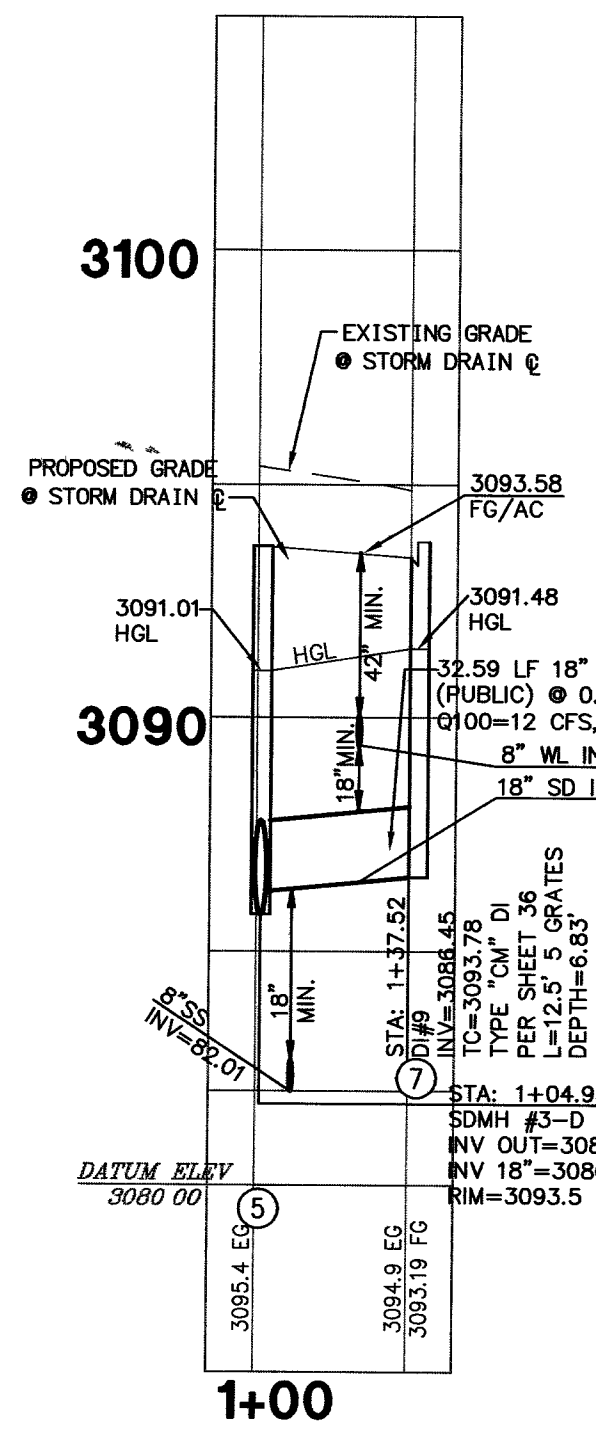
**CONSTRUCTION NOTES**

- 1) INSTALL 18" RCP STORM DRAIN
- 2) INSTALL 24" RCP STORM DRAIN
- 3) INSTALL 30" RCP STORM DRAIN
- 4) INSTALL 36" RCP STORM DRAIN
- 5) INSTALL TYPE I MANHOLE PER C.C.A.S.D. #403
- 6) INSTALL TYPE II MANHOLE PER C.C.A.S.D. #405
- 7) INSTALL TYPE "CM" DROP INLET PER DETAIL ON SHEET 38
- 8) INSTALL ALHAMBRA FOUNDRY A-1530 GRATED MANHOLE COVER



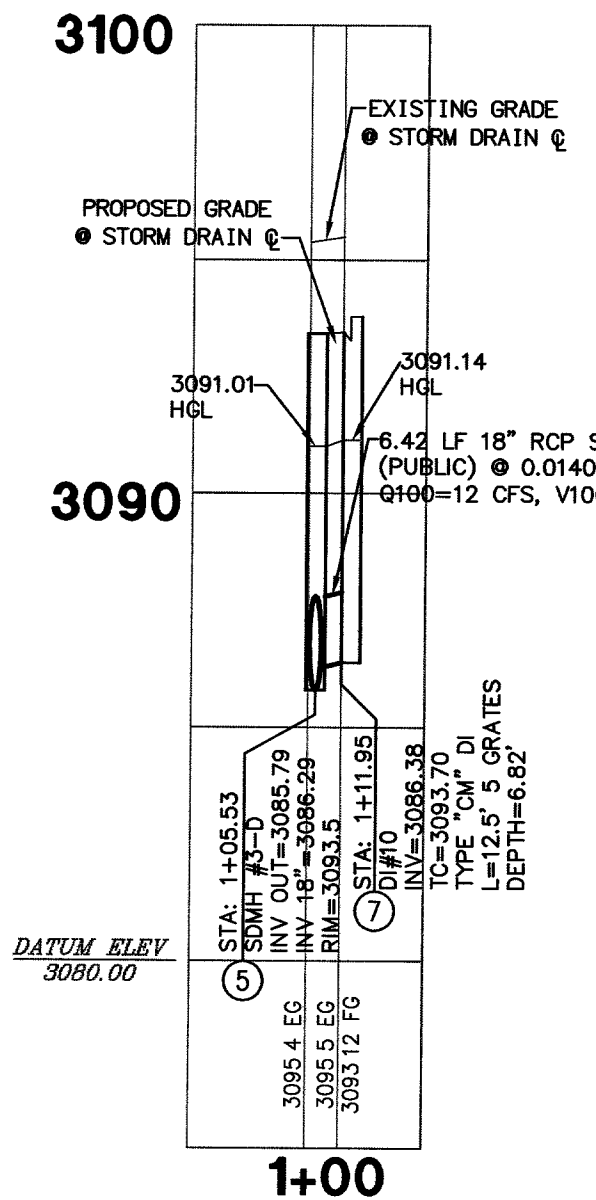
**STORM DRAIN LINE 3**

SCALE H: 1" = 40'  
SCALE V: 1" = 4'



**DI-9 TO MH 3-D**

SCALE H: 1" = 40'  
SCALE V: 1" = 4'



**DI-10 TO MH 3-D**

SCALE H: 1" = 40'  
SCALE V: 1" = 4'

**STORM DRAIN MANHOLE COORDINATE SCHEDULE**

MH#	NORTHING	EASTING
2-A	N 515009.0685	E 572155.1703
2-B	N 514868.6878	E 572156.4065
2-C	N 514812.7298	E 572156.8992
2-D	N 514588.5224	E 572154.8569

**STORM DRAIN CURVE TABLE**

DELTA	LENGTH	RADIUS	TANGENT	
A	04°57'32"	92.87'	1073.00'	46.46'

**STORM DRAIN TANGENT TABLE**

BEARING	LENGTH
1	N44°29'44"E 20.07
2	N00°30'16"W 117.33
3	N44°29'44"E 10.11
4	N58°54'34"W 32.87
5	N55°39'53"E 6.42
6	N54°15'47"W 32.59
7	N00°30'16"W 17.72
8	N00°30'16"W 55.96
9	N00°30'16"W 131.42

ALL SEWER/STORM DRAINS CROSSING WATER LINES MUST CONFORM TO SECTION 2.19 OF THE UNIFORM DESIGN AND CONSTRUCTION STANDARDS FOR POTABLE WATER SYSTEMS (UDACS) FOR WATER AND STORM MAIN CROSSINGS AND CLEARANCES. ESN.06-4 REVISED 06/01/04

APPROVED FOR CONSTRUCTION

*Mark W. Johnson* 5-21-05  
LAS VEGAS VALLEY WATER DISTRICT PROJ. 110523 DATE 1074436-2

**SUMMERLIN**  
PLANNING • DESIGN • CONSTRUCTION  
805 WEST FLANAGAN ROAD  
LAS VEGAS, NEVADA 89106  
702.364.0180 • FAX 702.364.0189 • WWW.SFB.COM

SHEET **KINGWOOD - PHASE II**  
**STORM DRAIN 3**  
PLAN AND PROFILE  
TITLE **VILLAGE 20 AT SUMMERLIN**  
PARCEL E, F & G

DRAWN BY: CTC 5/13/05  
DESIGNED BY: 5/13/05  
CHECKED BY: TLK 5/13/05  
PROJECT NO.: 50-100450  
SCALE: 1" = 40' HORZ.  
1" = 4' VERT.

SEAL  
**MARK W. JOHNSON**  
Exp. 6/30/08  
CIVIL  
No. 12729