

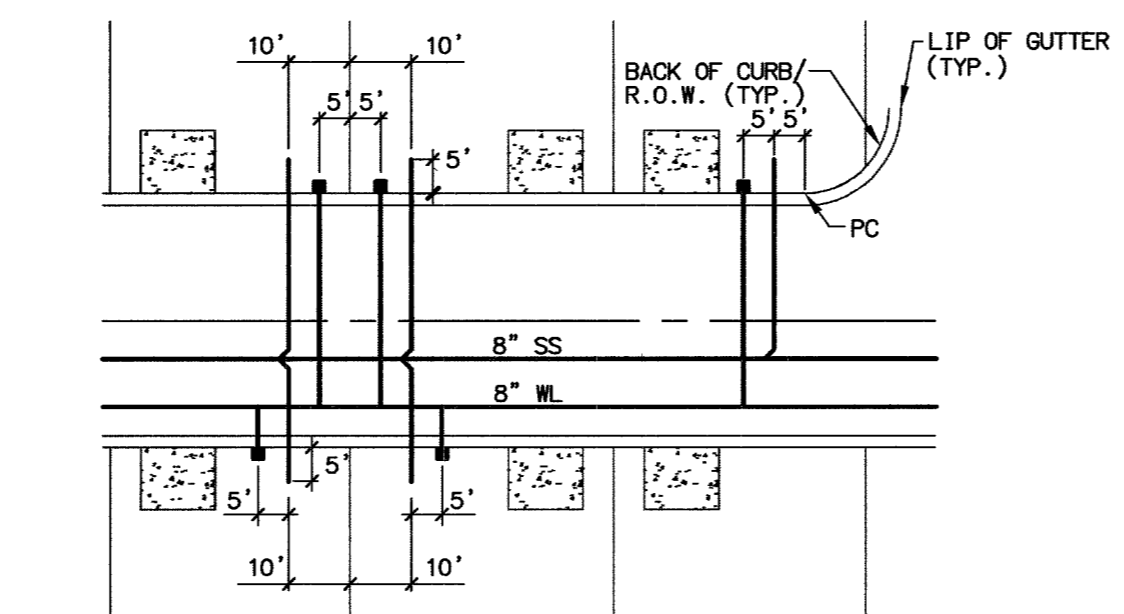
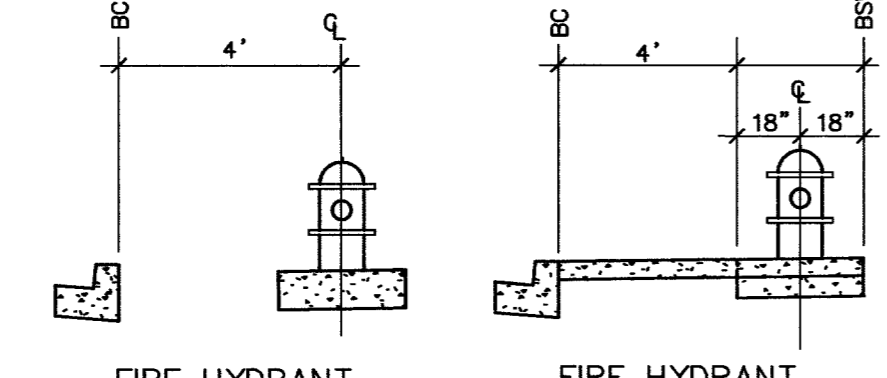
Call before you Dig
1-800-227-2800
NEVADA SERVICE (NLS)

CALL BEFORE OVERHEAD
1-702-593-6111

WATER MAIN JOINT DEFLECTION (PVC, 4"-24")
PVC PIPE SHALL BE DEFLECTED AT THE JOINT ONLY. THE MAXIMUM ALLOWABLE DEFLECTION SHALL BE ONE (1) DEGREE PER JOINT WITH A MINIMUM RADIUS OF CURVATURE OF 1,150 FEET, PER UDACS 2.06.01 AND 2.06.02
FOR CHANGES IN DIRECTION EXCEEDING THE MAXIMUM ALLOWABLE JOINT DEFLECTION, FITTINGS SHALL BE USED.

NOTE
INSTALL PIPELINE MARKER BALLS IN TRENCH ABOVE EACH HORIZONTAL ELBOW FITTING, PER UDACS PLATE NO. 27.

BEARING	LENGTH
1 N18°20'00"E	258.33
3 N22°34'04"E	80.01'
4 N67°25'56"W	209.98'



TYPICAL WATER AND SEWER SERVICE LOCATIONS

REDUCED PRESSURE PRINCIPLE ASSEMBLY (2) - 1" RPPA
APPROVED REDUCED PRESSURE PRINCIPLE ASSEMBLY(S) SHALL BE INSTALLED PER THE UDACS PLATE NO. 11A. NO WATER SHALL BE TAKEN FROM A SERVICE REQUIRING BACKFLOW PREVENTION UNTIL THE REDUCED PRESSURE PRINCIPLE ASSEMBLY HAS BEEN SUCCESSFULLY TESTED BY THE LVWD. ANY BLOCK WALL OR OTHER FENCE MATERIAL SHALL BE DESIGNED AND CONSTRUCTED AROUND THE OUTSIDE OF THE EASEMENT(S) TO ALLOW THE DISTRICT DIRECT ACCESS FROM THE ADJACENT RIGHT-OF-WAY. EASEMENT SHALL BE CLEARLY MARKED OR STAKED PRIOR TO THE START OF CONSTRUCTION.

THIS PROPERTY MAY HAVE STATIC WATER PRESSURE IN EXCESS OF 80 PSI. THE UNIFORM PLUMBING CODE REQUIRES THAT INDIVIDUAL ON-SITE (PRIVATE) PRESSURE-REDUCING VALVES BE INSTALLED WHENEVER THE PRESSURE EXCEEDS 80 PSI. PRV'S ARE THE DEVELOPER'S RESPONSIBILITY, AND WILL NOT BE INSPECTED OR INCLUDED IN THE ACCEPTANCE OF LVWD FACILITIES.

ESTIMATED SEWER CONTRIBUTION:

215 UNITS X 250 GPD/UNIT = 53,750 GPD
TOTAL AVERAGE CONTRIBUTION = 53,750 GPD = .053750 MGD
TOTAL PEAK FLOW = .053750 MGD X 3.3 (PEAK FACTOR) = 0.177375 MGD

BENCHMARK
RIVET AND PLATE IN TOP OF CURB AT NW CORNER OF PAVILION CENTER AND PALO BREA DR (NO. 0109 36W4)
3030.95 NAVD 1988 DATUM (923.834 M)

SCALE H: 1" = 40'

NOTE TO CONTRACTOR

PRIOR TO CONSTRUCTION, THE CONTRACTOR IS RESPONSIBLE FOR VERIFYING THE HORIZONTAL AND VERTICAL LOCATION OF ALL EXISTING UTILITIES. WHETHER OR NOT THEY ARE DEPICTED ON THESE PLANS, THE CONTRACTOR WILL NOTIFY THE ENGINEER OF ANY DISCREPANCIES BETWEEN THESE PLANS AND ACTUAL FIELD CONDITIONS.

CONSTRUCTION NOTES

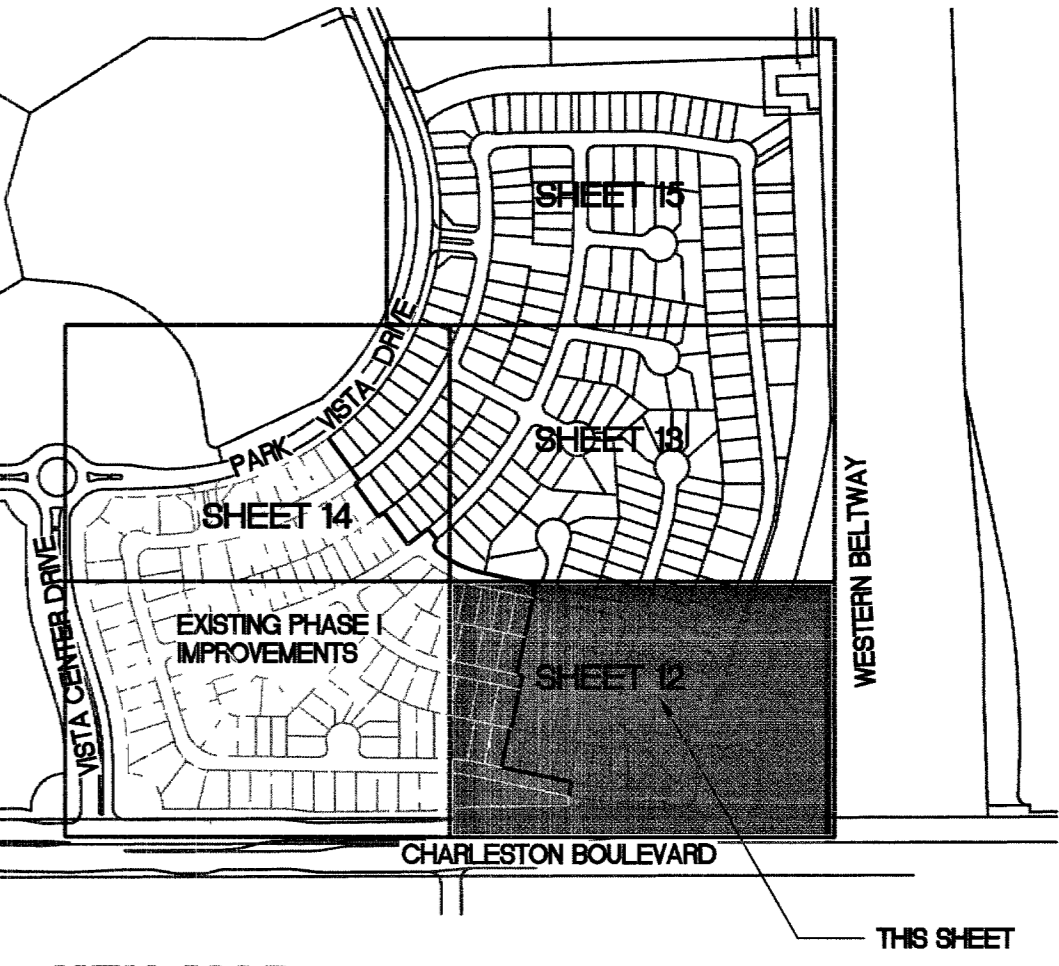
- INSTALL 12" GATE VALVE
- INSTALL CAP & 2" BLOW OFF ASSEMBLY PER U.D.A.C.S. PLATE 4A
- INSTALL 8" GATE VALVE
- INSTALL (2) 4" PVC SLEEVE FOR IRRIGATION WATERLINE
- INSTALL 12" x 8" REDUCER
- INSTALL 8" x 6" REDUCER
- INSTALL FIRE HYDRANT ASSEMBLY PER U.D.A.C.S. PLATE 7
NOTE: SEE LEGEND
- INSTALL 8" TEE
- INSTALL 90° BEND
- INSTALL 45° BEND
- INSTALL 22.5° BEND
- INSTALL 11.25° BEND
- INSTALL 5" BEND W / RESTRAINED JOINTS
- INSTALL 8" x 6" TEE
- INSTALL 6" GATE VALVE
- INSTALL 12" x 6" TEE
- INSTALL 12" x 12" TEE
- 1" WATER SERVICE WITH 1" WATER METER (IRRIGATION) & 1" RPPA (IRRIGATION) PER UDACS PLATE NO. 1D AND 11A AND POWER PEDESTAL
- INSTALL 6" GATE VALVE
- 1" WATER SERVICE WITH 3/4" WATER METER DOMESTIC PER UDACS PLATE 1B
- INSTALL PVC IRRIGATION SLEEVES QUANTITY AND SIZE ON PLANS

LEGEND

- XX LF 8" PUBLIC WL WATER LINE
- 8" PUBLIC SS SEWER LINE
- FIRE HYDRANT ASSEMBLY (INCLUDES ALL MATERIALS FROM THE MAIN TO THE HYDRANT NECESSARY FOR A COMPLETE AND OPERABLE UNIT)
- 6" SEWER LATERAL
- GATE VALVE
- CAP AND 2" BLOW OFF ASSEMBLY
- REDUCER
- SEWER MANHOLE
- 1" WATER SERVICE WITH 3/4" WATER METER (DOMESTIC) PER UDACS PLATE 1B
- (8" PUBLIC SS) EXISTING SEWER
- (12" PUBLIC WL) EXISTING WATER
- 1" WATER SERVICE WITH 1" WATER METER (IRRIGATION) & 1" RPPA (IRRIGATION) PER UDACS PLATE NO. 1D AND 11A
- BACKWATER VALVE REQUIRED
- POWER PEDESTAL

FIRE FLOW CALCULATIONS

FIRE FLOW REQUIREMENTS IS 1,750 GALLONS PER MINUTE AT 20 PSI RESIDUAL PRESSURE.
BASED ON:
SQUARE FOOTAGE: 4,000 SQUARE FEET
LARGEST AREA BETWEEN 4-HOUR AREA SEPARATION WALLS: N/A SQUARE FEET
BUILDING HEIGHT: 30 FEET
NUMBER OF STORES: 2 FEET
TYPE OF CONSTRUCTION: V-N
OCCUPANCY: SF
FULL AUTOMATIC FIRE SPRINKLER SYSTEM: YES NO
REVIEWED BY: [Signature] DATE: 12/05/05
LAS VEGAS FIRE DEPT.



KEY MAP

NOT TO SCALE

1st. App'd 5.21.05

SERVICE LATERALS FOR LOTS: 109 THRU 112
WILL BE TAPPED ON EXISTING MAIN BY OWNER'S CONTRACTOR UNDER DIRECTION OF THE LVWD.

SUMMERLIN
PLANNING • DESIGN • CONSTRUCTION
8635 WEST FLAMINGO ROAD
LAS VEGAS, NEVADA 89147-4184
702.964.0880 • FAX 702.964.0889 • WWW.RBF.COM

RBF CONSULTING

KINGWOOD - PHASE II UTILITY PLAN 1

VILLAGE 20 AT SUMMERLIN PARCEL E, F, & G

SHEET: 12 OF 39 SHEETS
SCALE: 1" = 40'
DATE: 12-05-05

DESIGNED BY: TLK
CHECKED BY: TLK
PROJECT NO.: 50-100450

PROF. ENGINEER
DANIEL J. WONDERS
Exp: 06/30/06
CIVIL