

Call before you Dig.
1-800-227-2600

CALL BEFORE YOU DO OVERHEAD
CALL 1-702-593-6111

NEVADA BOARD OF PROFESSIONAL ENGINEERS
BERT HUGHES
11111 S. MOHAWK AVENUE
LAS VEGAS, NV 89148
PH: 702-735-1111

- CONSTRUCTION NOTES**
- IMPROVEMENTS**
- INSTALL A.C. PAVEMENT PER STREET SECTIONS, SEE SHEET 42
 - INSTALL 6" L" TYPE CURB & GUTTER
 - INSTALL 8" L" TYPE CURB & GUTTER
 - INSTALL "A" TYPE ISLAND CURB
 - INSTALL 6" TO 8" CURB TRANSITION
 - INSTALL HANDICAP RAMP CURB DEPRESSION
 - ADJUST EXISTING FACILITY TO GRADE AND BACK OF CURB (IF REQUIRED)
 - INSTALL CROSS GUTTER
 - INSTALL HANDICAP RAMP CURB DEPRESSION
- WATER**
- INSTALL CAP W/ 2" BLOW-OFF ASSEMBLY
 - INSTALL FIRE HYDRANT ASSEMBLY
 - INSTALL 8" GATE VALVE & BOX
 - INSTALL 12" GATE VALVE & BOX
 - INSTALL 6" GATE VALVE & BOX
- SEWER**
- INSTALL 48" DIA. SEWER MANHOLE
 - INSTALL END PLUG AND MARKER
- STORM DRAIN**
- INSTALL TYPE "B" DROP INLET
 - INSTALL TYPE II STORM DRAIN MANHOLE
 - INSTALL TYPE III STORM DRAIN MANHOLE
 - INSTALL TEMPORARY PLUG
 - INSTALL TYPE "A" DROP INLET
 - INSTALL TYPE "C" DROP INLET
 - INSTALL MODIFIED TYPE "C" DROP INLET
- STREET LIGHTING**
- STREET LIGHT OR COMMON TRENCH, SEE STREET LIGHT PLAN
 - INSTALL SINGLE STREET LIGHT, SEE STREET LIGHT PLAN
 - INSTALL DOUBLE STREET LIGHT, SEE STREET LIGHT PLAN
 - INSTALL STREET LIGHT PULLBOX, SEE STREET LIGHT PLAN
- IRRIGATION**
- BANK "A": 1-6" & 2-4" SDR35 PVC
 - BANK "B": 2-4" SDR35 PVC
- TRAFFIC**
- INSTALL 2-3" CONDUIT FOR FUTURE TRAFFIC SIGNALS
 - INSTALL NO. 3 1/2 PULLBOX
 - INSTALL NO. 7 PULLBOX
 - INSTALL NO. 5 PULLBOX
 - INSTALL TYPE H FOUNDATION, XX POLE W/O MAST ARM, 400 W LUMINAIRE PER USD NO'S 404.208 AND 404.406
 - INSTALL 2" CONDUIT FOR TRAFFIC SIGNALS
 - INSTALL TYPE L FOUNDATION, XX-A POLE W/O MAST ARM, 400 W LUMINAIRE PER USD NO'S 404.209 AND 404.406

BASIS OF BEARING
NORTH 89°54'38" EAST, BEING THE SOUTH LINE OF THE SOUTHEAST QUARTER (SE 1/4) OF SECTION 35, TOWNSHIP 20 SOUTH, RANGE 59 EAST, M.D.M., AS SHOWN BY MAP THEREOF, ON FILE IN FILE 87, PAGE 73 OF SURVEYS, IN THE CLARK COUNTY RECORDER'S OFFICE, CLARK COUNTY, NEVADA.

BENCHMARK

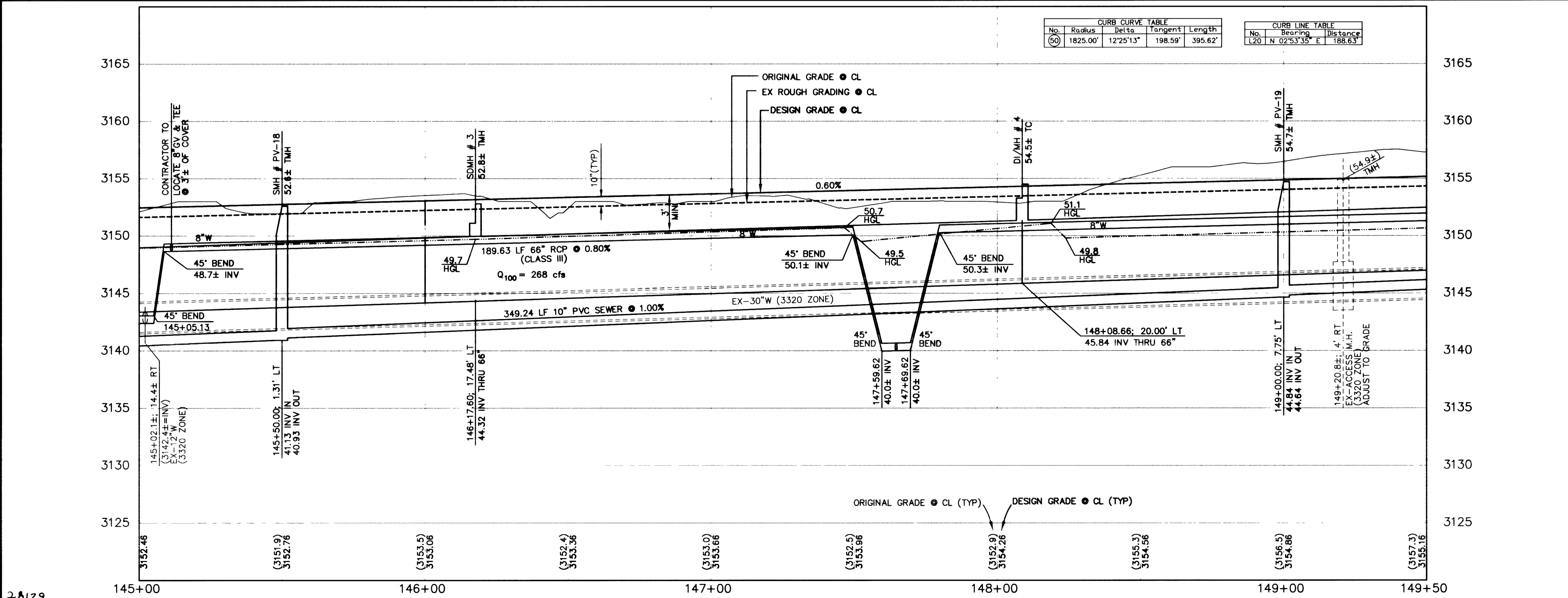
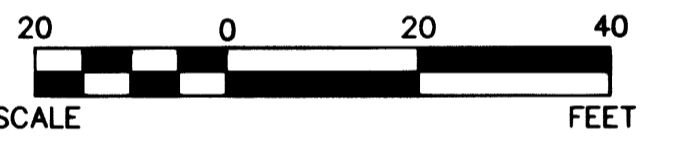
ID #	DESC.	NAVD 88 (FEET)	NAVD 88 (METERS)	SUMMERLIN DATUM
NO. 09	RIVET & PLATE IN TOP OF CURB, NE RETURN OF CHARLESTON BLVD. AND 36SES HUALAPAI WAY. (NO. 0LV09-36SES)	2912.23'	887.650	2910.05'

* THIS PROJECT BASED ON NAVD 1988 DATUM

PARK VISTA DRIVE (PUBLIC)

SCALE: HORIZ. 1" = 20'
VERT. 1" = 5'

NOTE
THIS SET OF DRAWINGS IS BASED UPON NAVD 88 DATUM. PREVIOUS DRAWINGS MAY BE BASED ON OTHER DATUM. CARE SHOULD BE OBSERVED WHEN UTILIZING THIS SET OF DRAWINGS.



NOTE TO CONTRACTOR

- ALL EXISTING UTILITY CROSSINGS MUST BE VERIFIED PRIOR TO CONSTRUCTION OF ANY MAIN LINES OR LATERALS THAT MAY BE ADVERSELY EFFECTED. ANY DISCREPANCIES IN LOCATION AND/OR ELEVATION MUST BE PROVIDED TO THE ENGINEER FOR ACCEPTANCE PRIOR TO CONSTRUCTION.
- TOPOGRAPHY SHOWN HEREIN REFLECTS ORIGINAL EXISTING TOPOGRAPHY. ACTUAL FIELD CONDITIONS INCLUDE SITE ROUGH GRADING.
- ALL COMMON LOTS AS SHOWN HEREIN TO BE PRIVATELY MAINTAINED BY THE SUMMERLIN H.O.A. A FUTURE MEANDERING SIDEWALK WILL BE INSTALLED BY SUMMERLIN AS REQUIRED TO SERVICE THE DEVELOPMENT OF EACH PARCEL.
- ALL WATER LINE GATE VALVES, SERVICE GATE VALVES, AND FIRE HYDRANT GATE VALVES ARE TO BE CONSTRUCTED UNDER A.C. PAVEMENT. IT IS THE CONTRACTOR'S RESPONSIBILITY TO VERIFY THAT ALL WATER VALVES CANS DO NOT CREATE CONFLICTS WITH THE PROPOSED CURB LINE PRIOR TO PLACEMENT OF CONCRETE. ALL WATER FACILITIES SHOWN IN THESE DRAWINGS HAVE BEEN "SCALED-UP" FOR CLARITY ONLY.

SHEET INDEX MAP

APPROVAL:
[Signature]
DATE: 11-16-00

G. C. WALLACE, INC.
Engineering/Architecture
1343 S. LAS VEGAS BLVD., SUITE 80148
LAS VEGAS, NV 89148
TELEPHONE: (702) 804-2000 • FAX: (702) 804-2299

SUMMERLIN
VILLAGE 20 - UNIT 2 IMPROVEMENTS
PLAN AND PROFILE
STA 145+00 TO 149+50

SHEET 15
15 OF 52 SHEETS

JOB NO. 62020222