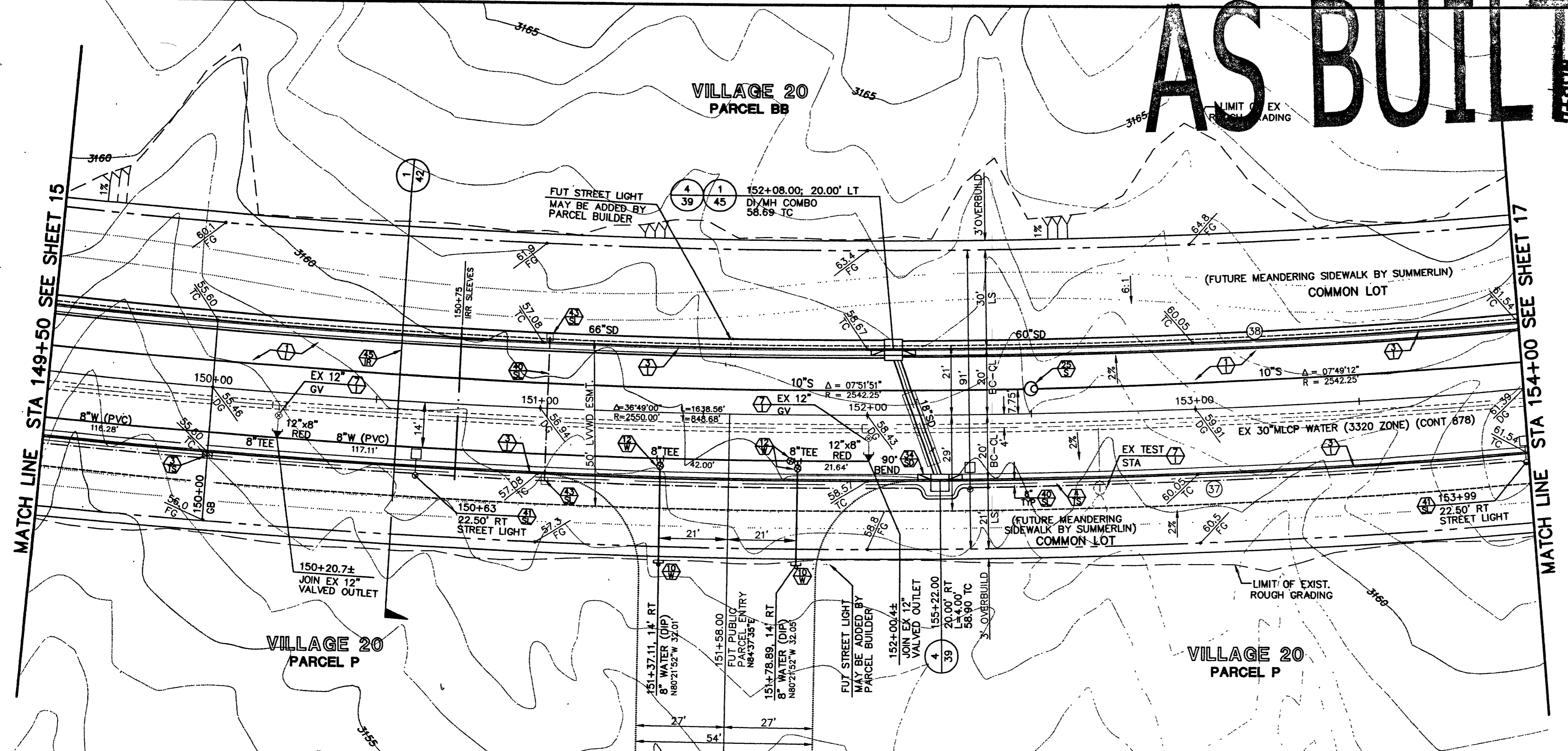
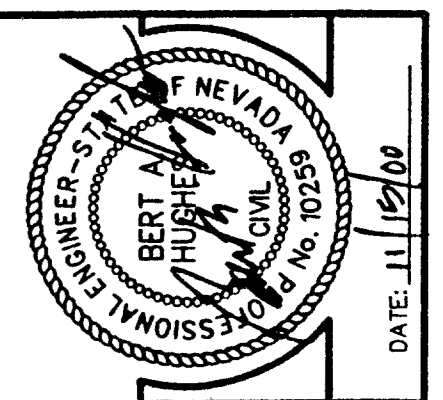
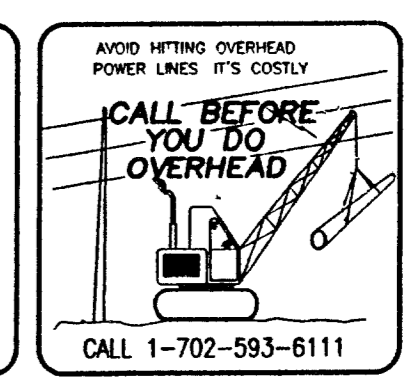


# AS BUILT

Call before you Dig.  
1-800-227-2600



**BASIS OF BEARING**  
NORTH 89°54'38" EAST, BEING THE SOUTH LINE OF THE SOUTHEAST QUARTER (SE 1/4) OF SECTION 35, TOWNSHIP 20 SOUTH, RANGE 59 EAST, M.D.M., AS SHOWN BY MAP THEREOF, ON FILE IN FILE 87, PAGE 73 OF SURVEYS, IN THE CLARK COUNTY RECORDER'S OFFICE, CLARK COUNTY, NEVADA.

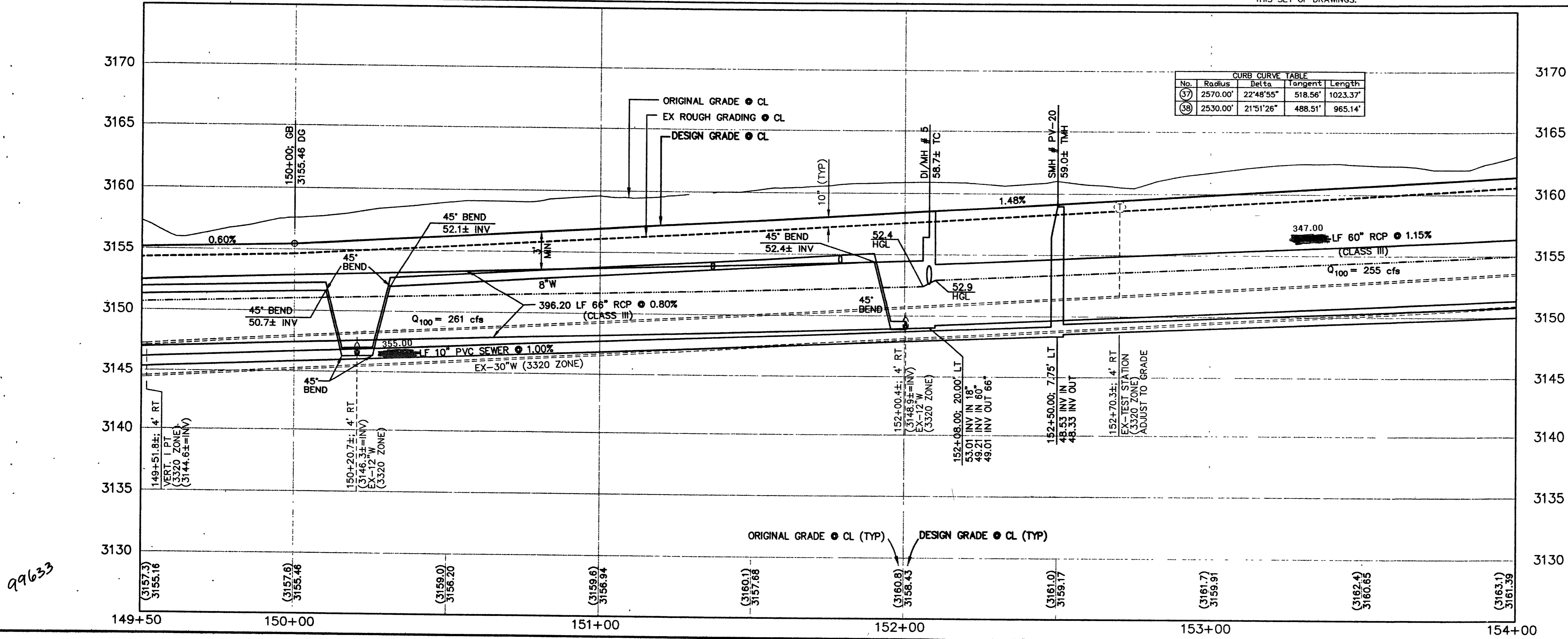
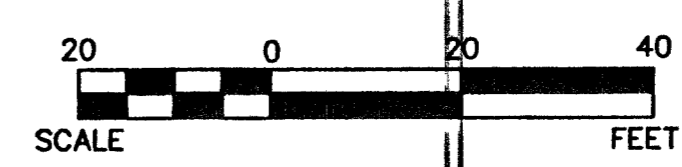
**BENCHMARK**  
\* THIS PROJECT BASED ON NAVD 1988 DATUM

ID #	DESC.	NAVD 88 (FEET)	NAVD 88 (METERS)	SUMMERLIN DATUM
NO. 01	RISET & PLATE IN TOP OF CURB, NE OLVO9-	2912.22'	887.650	2910.05'
36SES	RETURN OF CHARLESTON BLVD. AND HUALLAPAY WAY. (NO. OLVO9-36SES)			

## PARK VISTA DRIVE (PUBLIC)

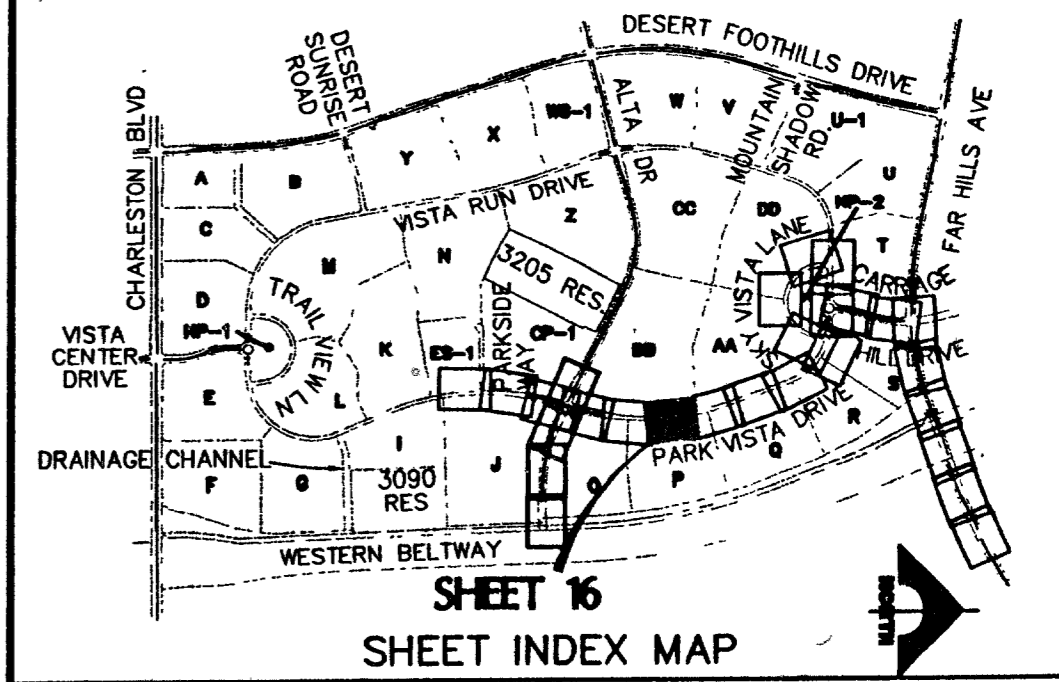
SCALE: HORIZ. 1" = 20'  
VERT. 1" = 5'

**NOTE**  
THIS SET OF DRAWINGS IS BASED UPON NAVD 88 DATUM, PREVIOUS DRAWINGS MAY BE BASED ON OTHER DATUM. CARE SHOULD BE OBSERVED WHEN UTILIZING THIS SET OF DRAWINGS.



- CONSTRUCTION NOTES**
- IMPROVEMENTS**
- INSTALL A.C. PAVEMENT PER STREET SECTIONS, SEE SHEET 42
  - INSTALL 6" "L" TYPE CURB & GUTTER
  - INSTALL 8" "L" TYPE CURB & GUTTER
  - INSTALL "A" TYPE ISLAND CURB
  - INSTALL 6" TO 8" CURB TRANSITION
  - INSTALL HANDICAP RAMP CURB DEPRESSION
  - ADJUST EXISTING FACILITY TO GRADE AND BACK OF CURB (IF REQUIRED)
  - INSTALL CROSS GUTTER
  - INSTALL HANDICAP RAMP CURB DEPRESSION
- WATER**
- INSTALL CAP W/ 2" BLOW-OFF ASSEMBLY
  - INSTALL FIRE HYDRANT ASSEMBLY
  - INSTALL 8" GATE VALVE & BOX
  - INSTALL 12" GATE VALVE & BOX
  - INSTALL 6" GATE VALVE & BOX
- SEWER**
- INSTALL 48" DIA. SEWER MANHOLE
  - INSTALL END PLUG AND MARKER
- STORM DRAIN**
- INSTALL TYP "B" DROP INLET
  - INSTALL TYPE II STORM DRAIN MANHOLE
  - INSTALL TYPE III STORM DRAIN MANHOLE
  - INSTALL TEMPORARY PLUG
  - INSTALL TYPE "A" DROP INLET
  - INSTALL TYPE "C" DROP INLET
  - INSTALL MODIFIED TYPE "C" DROP INLET
- STREET LIGHTING**
- STREET LIGHT OR COMMON TRENCH, SEE STREET LIGHT PLAN
  - INSTALL SINGLE STREET LIGHT, SEE STREET LIGHT PLAN
  - INSTALL DOUBLE STREET LIGHT, SEE STREET LIGHT PLAN
  - INSTALL STREET LIGHT PULLBOX, SEE STREET LIGHT PLAN
- IRIGATION**
- BANK "A": 1-6" & 2-4" SDR35 PVC
  - BANK "B": 2-4" SDR35 PVC
- TRAFFIC**
- INSTALL 2-3" CONDUIT FOR FUTURE TRAFFIC SIGNALS
  - INSTALL NO. 3 1/2 PULLBOX
  - INSTALL NO. 7 PULLBOX
  - INSTALL 3" PVC CONDUIT FOR TRAFFIC SIGNAL INTERCONNECT (W/ 1" INNERDUCT) AND PULLBOXES AS IDENTIFIED PER PLAN (500' MAX) WITH 30° (THIRTY DEGREE) RIGID BENDS (PVC OVER STEEL) INTO PULLBOXES FOR FUTURE FIBER OPTIC.
  - INSTALL NO. 5 PULLBOX
  - INSTALL TYPE H FOUNDATION, XX POLE W/O MAST ARM, 400 W LUMINAIRE PER USD NO'S 404.208 AND 404.406
  - INSTALL 2-2" CONDUIT FOR TRAFFIC SIGNALS
  - INSTALL TYPE L FOUNDATION, XX-A POLE W/O MAST ARM, 400 W LUMINAIRE PER USD NO'S 404.209 AND 404.406

- NOTE TO CONTRACTOR:**
- ALL EXISTING UTILITY CROSSINGS MUST BE VERIFIED PRIOR TO CONSTRUCTION OF ANY MAIN LINES OR LATERALS THAT MAY BE ADVERSELY EFFECTED. ANY DISCREPANCIES IN LOCATION AND/OR ELEVATION MUST BE PROVIDED TO THE ENGINEER FOR ACCEPTANCE PRIOR TO CONSTRUCTION.
  - TOPOGRAPHY SHOWN HEREIN REFLECTS ORIGINAL EXISTING TOPOGRAPHY. ACTUAL FIELD CONDITIONS INCLUDE SITE ROUGH GRADING.
  - ALL COMMON LOTS AS SHOWN HEREIN TO BE PRIVATELY MAINTAINED BY THE SUMMERLIN H.O.A. A FUTURE MEANDERING SIDEWALK WILL BE INSTALLED BY SUMMERLIN AS REQUIRED TO SERVICE THE DEVELOPMENT OF EACH PARCEL.
  - ALL WATER LINE GATE VALVES, SERVICE GATE VALVES, AND FIRE HYDRANT GATE VALVES ARE TO BE CONSTRUCTED UNDER A.C. PAVEMENT. IT IS THE CONTRACTORS RESPONSIBILITY TO VERIFY THAT ALL WATER VALVES CANS DO NOT CREATE CONFLICTS WITH THE PROPOSED CURB LINE PRIOR TO PLACEMENT OF CONCRETE. ALL WATER FACILITIES SHOWN IN THESE DRAWINGS HAVE BEEN "SCALED-UP" FOR CLARITY ONLY.



APPROVAL:  
*[Signature]* 1st APP. 9.22.00  
LAS VEGAS VALLEY WATER DISTRICT

**AS BUILT**

DESIGN: J.U. CHECK: JMS DRAWN: BAH ISSUE DATE: 11-14-00 PLOT DATE: 11-14-00 PLOT TIME: 08:58:13

**G. C. WALLACE, INC.**  
Engineering/Architecture  
1565 SOUTH RAINBOW BLVD., LAS VEGAS, NEVADA 89146  
TEL: 702-734-2299 FAX: 702-734-2299

**SUMMERLIN**  
VILLAGE 20 - UNIT 2 IMPROVEMENTS  
PARK VISTA DRIVE  
PLAN AND PROFILE  
STA 149+50 TO 154+00

SHEET 16 OF 52 SHEETS  
JOB NO. 62020.222