

BENCHMARK

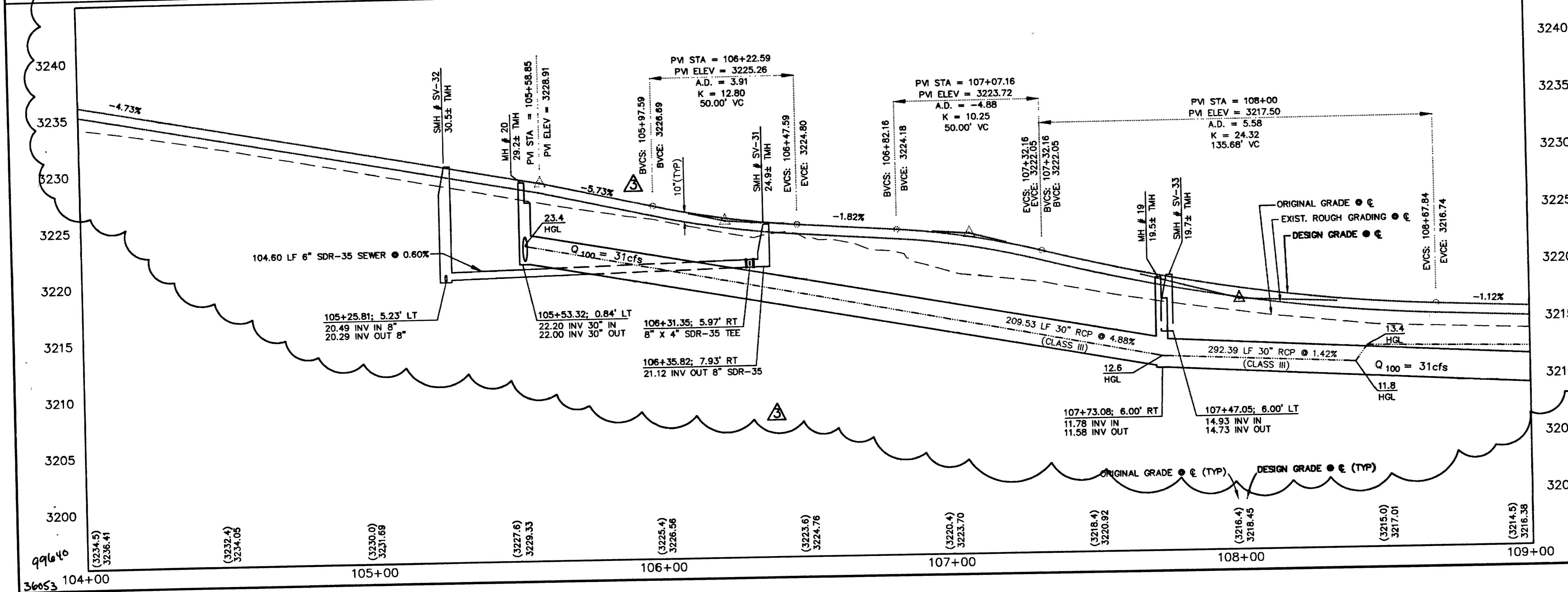
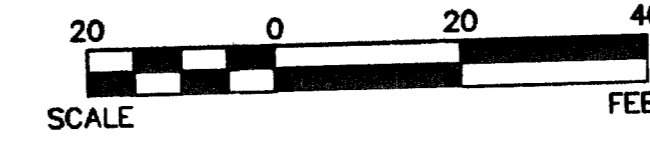
ID #	DESC.	NAVD 88 (FEET)	NAVD 88 (METERS)	SUMMERLIN DATUM
1	RIVET & PLATE IN TOP OF CURB, NE CORNER OF CHARLESTON BLVD AND HUALAPAI WAY (NO. 0LV9-36SES)	2912.23	887.650	2910.05'

THIS PROJECT BASED ON NAVD 1988 DATUM

PARK DRIVEWAY (PRIVATE)

SCALE: HORIZ. 1" = 20'
VERT. 1" = 5'

NOTE
THIS SET OF DRAWINGS IS BASED UPON NAVD 88 DATUM. PREVIOUS DRAWINGS MAY BE BASED ON OTHER DATUM. CARE SHOULD BE OBSERVED WHEN UTILIZING THIS SET OF DRAWINGS.



CONSTRUCTION NOTES

IMPROVEMENTS

- INSTALL A.C. PAVEMENT PER STREET SECTIONS. SEE SHEET 42
- INSTALL 6" "L" TYPE CURB & GUTTER
- INSTALL 8" "L" TYPE CURB & GUTTER
- INSTALL "A" TYPE ISLAND CURB
- INSTALL 6" TO 8" CURB TRANSITION
- INSTALL HANDICAP RAMP CURB DEPRESSION
- ADJUST EXISTING FACILITY TO GRADE AND BACK OF CURB (IF REQUIRED)
- INSTALL CROSS GUTTER
- INSTALL HANDICAP RAMP CURB DEPRESSION

WATER

- INSTALL CAP W/ 2" BLOW-OFF ASSEMBLY
- INSTALL FIRE HYDRANT ASSEMBLY
- INSTALL 8" GATE VALVE & BOX
- INSTALL 12" GATE VALVE & BOX
- INSTALL 6" GATE VALVE & BOX

SEWER

- INSTALL 48" DIA. SEWER MANHOLE
- INSTALL END PLUG AND MARKER

STORM DRAIN

- INSTALL TYP "B" DROP INLET
- INSTALL TYP II STORM DRAIN MANHOLE
- INSTALL TYP III STORM DRAIN MANHOLE
- INSTALL TEMPORARY PLUG
- INSTALL TYP "A" DROP INLET
- INSTALL TYP "C" DROP INLET
- INSTALL MODIFIED TYP "C" DROP INLET
- PIPE CONNECTION DETAIL #1
- PIPE CONNECTION DETAIL #2

STREET LIGHTING

- STREET LIGHT OR COMMON TRENCH, SEE STREET LIGHT PLAN
- INSTALL SINGLE STREET LIGHT, SEE STREET LIGHT PLAN
- INSTALL DOUBLE STREET LIGHT, SEE STREET LIGHT PLAN
- INSTALL STREET LIGHT PULLBOX, SEE STREET LIGHT PLAN

IRRIGATION

- BANK "A": 1-6" & 2-4" SDR35 PVC
- BANK "B": 2-4" SDR35 PVC

TRAFFIC

- INSTALL 2-3" CONDUIT FOR FUTURE TRAFFIC SIGNALS
- INSTALL NO. 3 1/2 PULLBOX
- INSTALL 3" PVC CONDUIT FOR TRAFFIC SIGNAL INTERCONNECT (W/ 1" INNERDUCT) AND PULLBOXES AS IDENTIFIED PER PLAN (500' MAX) WITH 30' (THIRTY DEGREE) RIGID BENDS (PVC OVER STEEL) INTO PULLBOXES FOR FUTURE FIBER OPTIC.
- INSTALL NO. 5 PULLBOX
- INSTALL TYP H FOUNDATION, XX POLE W/O MAST ARM, 400 W LUMINAIRE PER USD NO'S 404 208 AND 404 406
- INSTALL 2-2" CONDUIT FOR TRAFFIC SIGNALS
- INSTALL TYP L FOUNDATION, XX-A POLE W/O MAST ARM, 400 W LUMINAIRE PER USD NO'S 404 208 AND 404 406
- INSTALL 2" CONDUIT W/ PULL STRING FOR FUTURE SCHOOL FLASHER'S

NOTE TO CONTRACTOR:

- ALL EXISTING UTILITY CROSSINGS MUST BE VERIFIED PRIOR TO CONSTRUCTION OF ANY MAIN LINES OR LATERALS THAT MAY BE ADVERSELY EFFECTED. ANY DISCREPANCIES IN LOCATION AND/OR ELEVATION MUST BE PROVIDED TO THE ENGINEER FOR ACCEPTANCE PRIOR TO CONSTRUCTION.
- TOPOGRAPHY SHOWN HEREIN REFLECTS ORIGINAL EXISTING TOPOGRAPHY. ACTUAL FIELD CONDITIONS INCLUDE SITE ROUGH GRADING.
- ALL COMMON LOTS AS SHOWN HEREIN TO BE PRIVATELY MAINTAINED BY THE SUMMERLIN H.O.A. A FUTURE MEANDERING SIDEWALK WILL BE INSTALLED BY SUMMERLIN AS REQUIRED TO SERVICE THE DEVELOPMENT OF EACH PARCEL.
- ALL WATER LINE GATE VALVES, SERVICE GATE VALVES, AND FIRE HYDRANT GATE VALVES ARE TO BE CONSTRUCTED UNDER A.C. PAVEMENT. IT IS THE CONTRACTOR'S RESPONSIBILITY TO VERIFY THAT ALL WATER VALVES CANS DO NOT CREATE CONFLICTS WITH THE PROPOSED CURB LINE PRIOR TO PLACEMENT OF CONCRETE. ALL WATER FACILITIES SHOWN IN THESE DRAWINGS HAVE BEEN "SCALED-UP" FOR CLARITY ONLY.

SHEET INDEX MAP

APPROVAL:
LAS VEGAS VALLEY WATER DISTRICT
DATE: 10-18-01

G. C. WALLACE, INC.
Engineering/Architecture
1555 SOUTH RAINBOW BLVD., LAS VEGAS, NEVADA 89146
TELEPHONE: (702) 846-2000 • FAX: (702) 804-2289
E-MAIL: GWallace@GWallace.com

SUMMERLIN
VILLAGE 20 - UNIT 2 IMPROVEMENTS
SKY VISTA LANE
PLAN AND PROFILE
STA 104+00 TO 109+00
SHEET 26
26 OF 52 SHTS
JOB NO. 62020.222