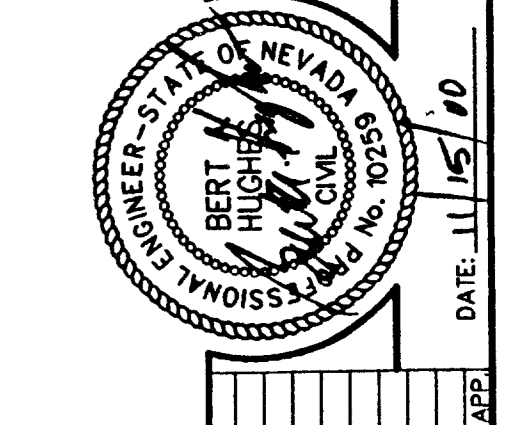


# AS BUILT

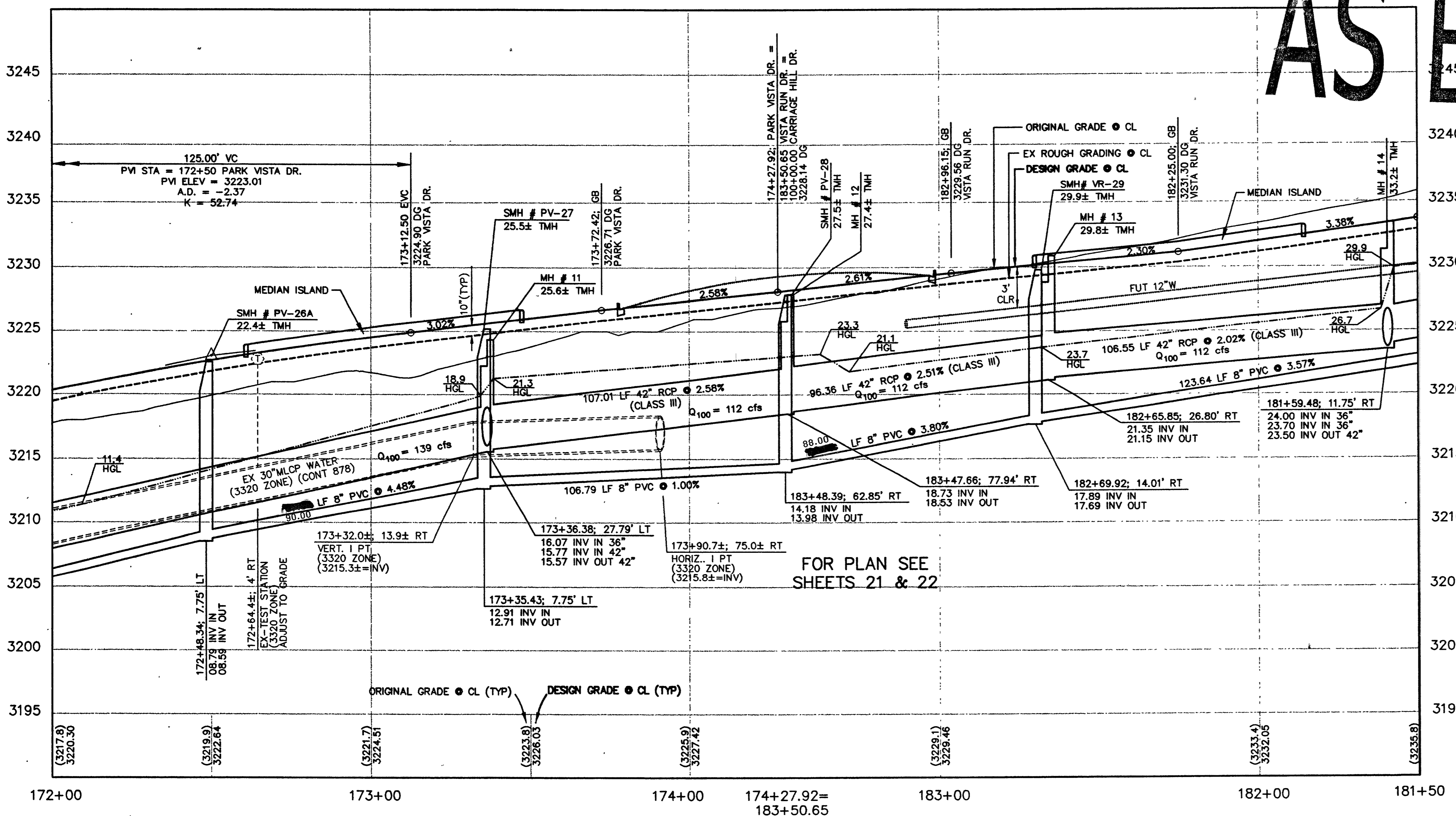
Call before you Dig.  
1-800-227-2600

CALL BEFORE YOU DIG OVERHEAD  
CALL 1-702-593-6111



MATCH LINE STA 172+00 SEE SHEET 20

MATCH LINE STA 181+50 SEE SHEET 24



FOR PLAN SEE SHEETS 21 & 22

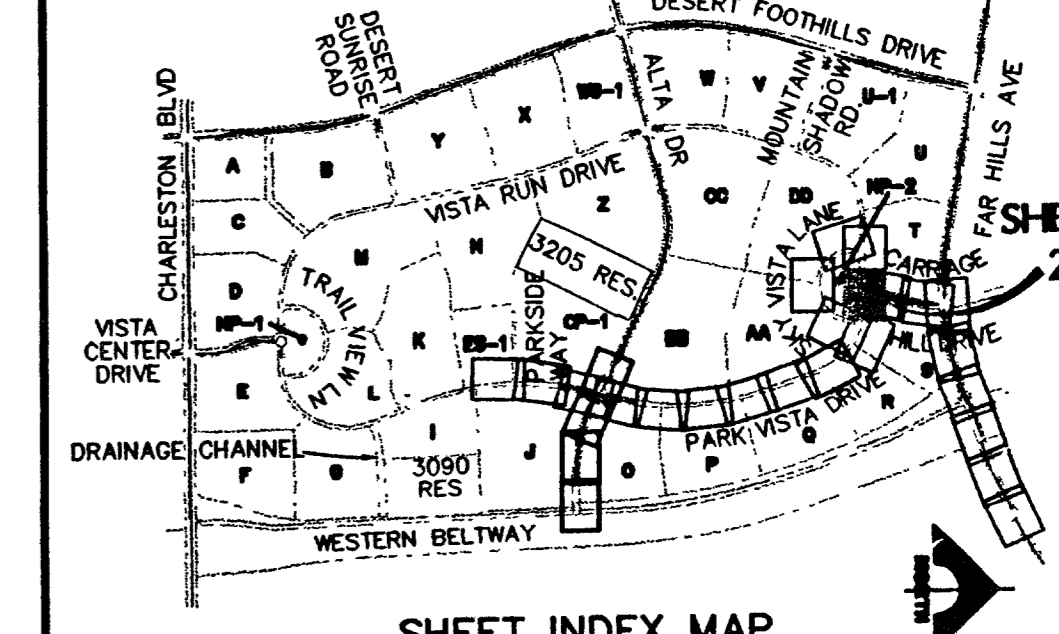
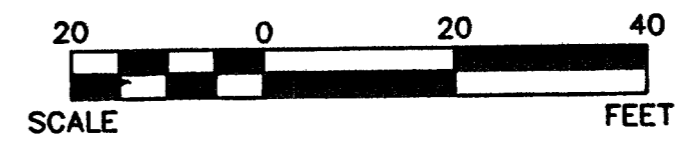
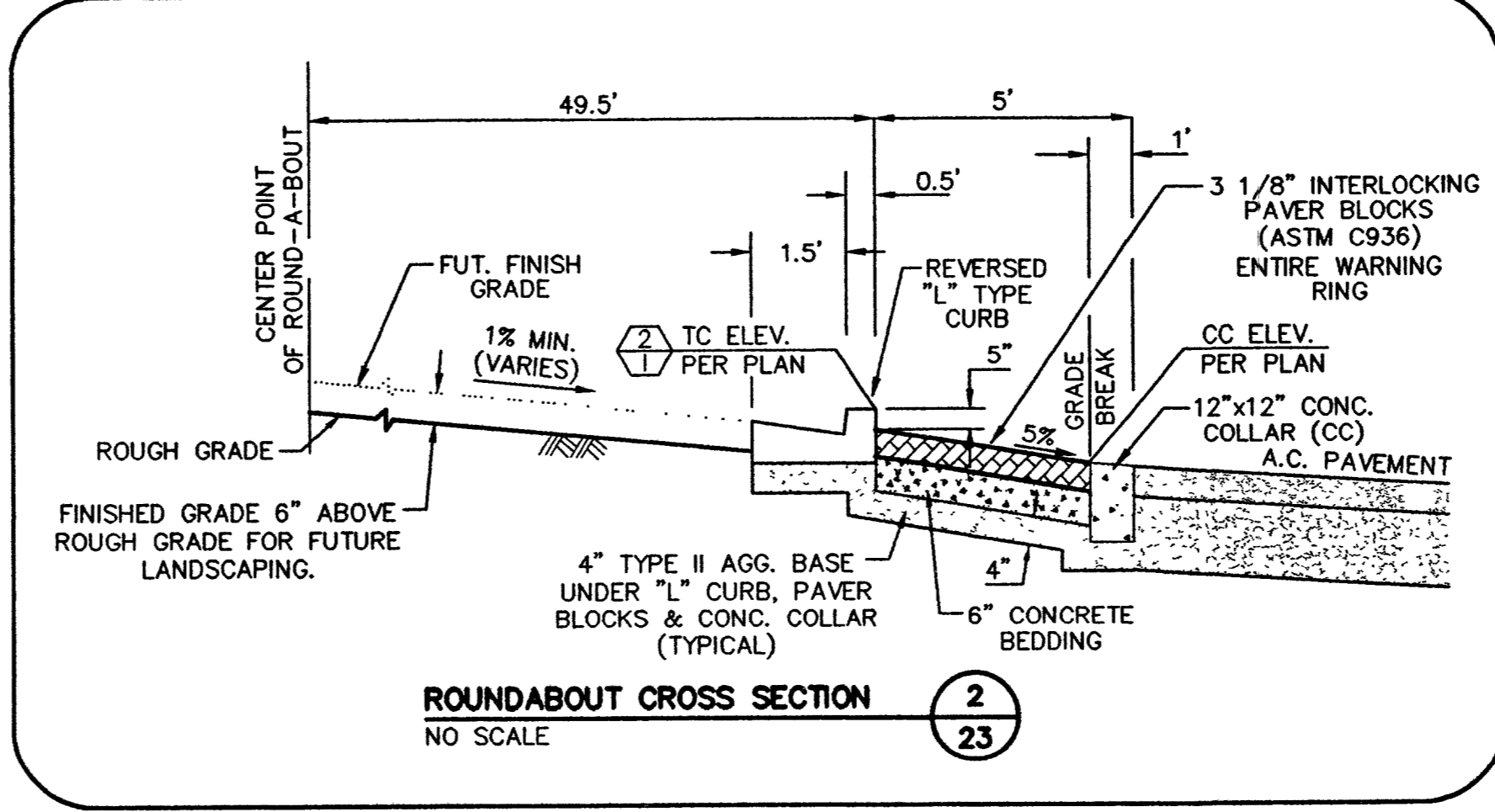
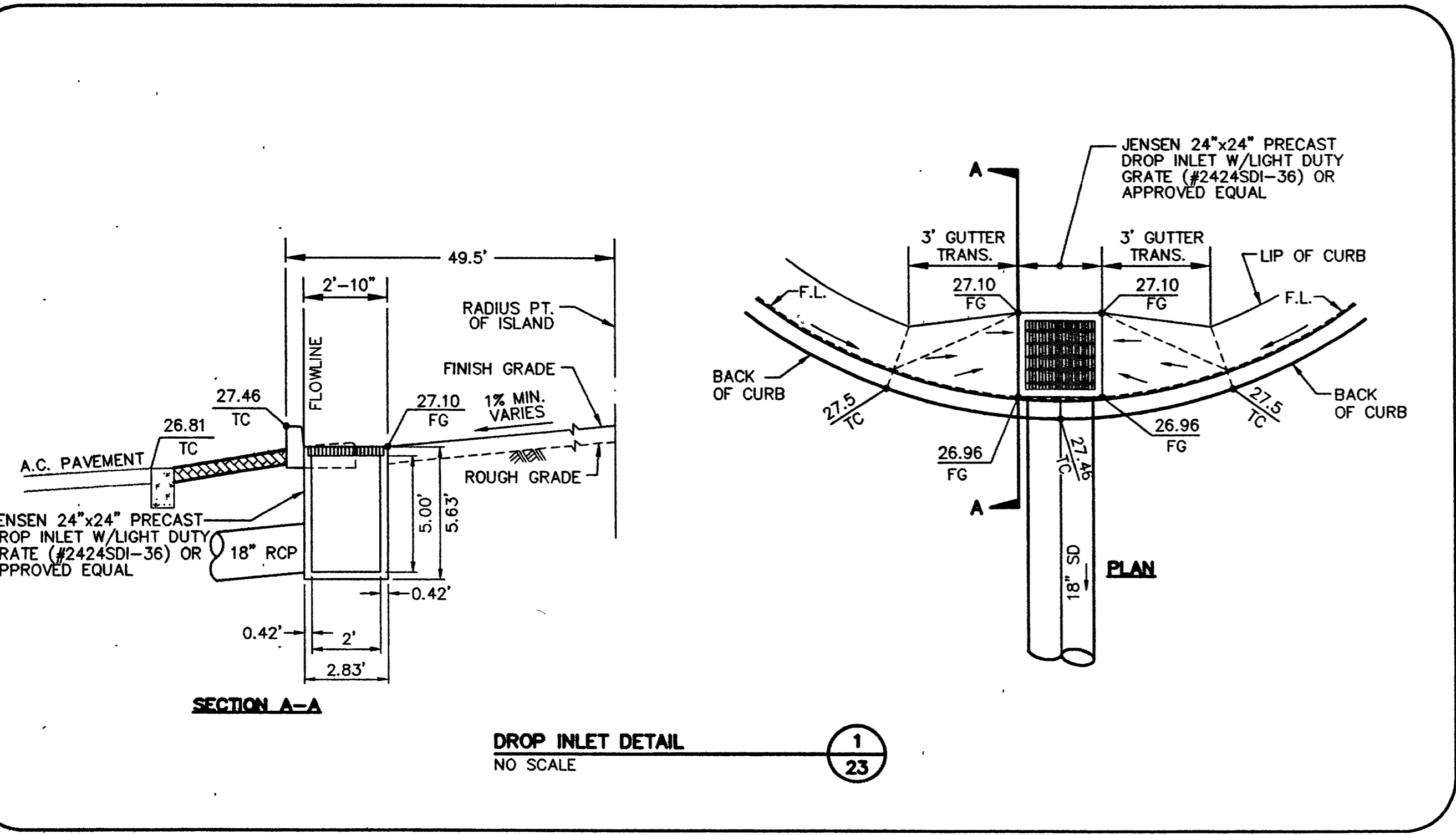
- ### CONSTRUCTION NOTES
- IMPROVEMENTS**
    - INSTALL A.C. PAVEMENT PER STREET SECTIONS, SEE SHEET 42
    - INSTALL 6" "L" TYPE CURB & GUTTER
    - INSTALL 8" "L" TYPE CURB & GUTTER
    - INSTALL "A" TYPE ISLAND CURB
    - INSTALL 6" TO 8" CURB TRANSITION
    - INSTALL HANDICAP RAMP CURB DEPRESSION
    - ADJUST EXISTING FACILITY TO GRADE AND BACK OF CURB (IF REQUIRED)
    - INSTALL CROSS GUTTER
    - INSTALL HANDICAP RAMP CURB DEPRESSION
  - WATER**
    - INSTALL CAP W/ 2" BLOW-OFF ASSEMBLY
    - INSTALL FIRE HYDRANT ASSEMBLY
    - INSTALL 8" GATE VALVE & BOX
    - INSTALL 12" GATE VALVE & BOX
    - INSTALL 6" GATE VALVE & BOX
  - SEWER**
    - INSTALL 48" DIA. SEWER MANHOLE
    - INSTALL END PLUG AND MARKER
  - STORM DRAIN**
    - INSTALL TYP "B" DROP INLET
    - INSTALL TYPE II STORM DRAIN MANHOLE
    - INSTALL TYPE III STORM DRAIN MANHOLE
    - INSTALL TEMPORARY PLUG
    - INSTALL TYPE "A" DROP INLET
    - INSTALL TYPE "C" DROP INLET
    - INSTALL MODIFIED TYPE "C" DROP INLET
  - STREET LIGHTING**
    - STREET LIGHT OR COMMON TRENCH, SEE STREET LIGHT PLAN
    - INSTALL SINGLE STREET LIGHT, SEE STREET LIGHT PLAN
    - INSTALL DOUBLE STREET LIGHT, SEE STREET LIGHT PLAN
    - INSTALL STREET LIGHT PULLBOX, SEE STREET LIGHT PLAN
  - IRRIGATION**
    - BANK "A"; 1-6" & 2-4" SDR35 PVC
    - BANK "B"; 2-4" SDR35 PVC
  - TRAFFIC**
    - INSTALL 2-3" CONDUIT FOR FUTURE TRAFFIC SIGNALS
    - INSTALL NO. 3 1/2 PULLBOX
    - INSTALL NO. 7 PULLBOX
    - INSTALL 3" PVC CONDUIT FOR TRAFFIC SIGNAL INTERCONNECT (W/ 1" INNERDUCT) AND PULLBOXES AS IDENTIFIED PER PLAN (500' MAX) WITH 30° (THIRTY DEGREE) RIGID BENDS (PVC OVER STEEL) INTO PULLBOXES FOR FUTURE FIBER OPTIC.
    - INSTALL NO. 5 PULLBOX
    - INSTALL TYPE H FOUNDATION, XX POLE W/O MAST ARM, 400 W LUMINAIRE PER USD NO'S 404.208 AND 404.406
    - INSTALL TYPE L FOUNDATION, XX-A POLE W/O MAST ARM, 400 W LUMINAIRE PER USD NO'S 404.209 AND 404.406

**AS BUILT**

DESIGN: JWS  
DRAWN: JMS  
CHECK: BAH  
ISSUE DATE:  
ISSUE EDITOR:  
PLOT DATE: 11-14-00  
PLOT TIME: 10:23:44

**G. C. WALLACE, INC.**  
Engineering/Architecture  
1555 SOUTH RAINBOW BLVD./AS VEGAS, NEVADA, 89146  
TELEPHONE: (702) 804-2000 • FAX: (702) 804-2299

- ### NOTE TO CONTRACTOR
- ALL EXISTING UTILITY CROSSINGS MUST BE VERIFIED PRIOR TO CONSTRUCTION OF ANY MAIN LINES OR LATERALS THAT MAY BE ADVERSELY EFFECTED. ANY DISCREPANCIES IN LOCATION AND/OR ELEVATION MUST BE PROVIDED TO THE ENGINEER FOR ACCEPTANCE PRIOR TO CONSTRUCTION.
  - TOPOGRAPHY SHOWN HEREIN REFLECTS ORIGINAL EXISTING TOPOGRAPHY. ACTUAL FIELD CONDITIONS INCLUDE SITE ROUGH GRADING.
  - ALL COMMON LOTS AS SHOWN HEREIN TO BE PRIVATELY MAINTAINED BY THE SUMMERLIN H.O.A. A FUTURE MEANDERING SIDEWALK WILL BE INSTALLED BY SUMMERLIN AS REQUIRED TO SERVICE THE DEVELOPMENT OF EACH PARCEL.
  - ALL WATER LINE GATE VALVES, SERVICE GATE VALVES, AND FIRE HYDRANT GATE VALVES ARE TO BE CONSTRUCTED UNDER A.C. PAVEMENT. IT IS THE CONTRACTOR'S RESPONSIBILITY TO VERIFY THAT ALL WATER VALVES CANS DO NOT CREATE CONFLICTS WITH THE PROPOSED CURB LINE PRIOR TO PLACEMENT OF CONCRETE. ALL WATER FACILITIES SHOWN IN THESE DRAWINGS HAVE BEEN "SCALED-UP" FOR CLARITY ONLY.



**BASIS OF BEARING**  
NORTH 89°54'38" EAST, BEING THE SOUTH LINE OF THE SOUTHEAST QUARTER (SE 1/4) OF SECTION 35, TOWNSHIP 20 SOUTH, RANGE 59 EAST, W.D.M., AS SHOWN BY MAP THEREOF ON FILE IN FILE 87, PAGE 73 OF SURVEYS, IN THE CLARK COUNTY RECORDER'S OFFICE, CLARK COUNTY, NEVADA.

**BENCHMARK**  
\* THIS PROJECT BASED ON NAVD 1988 DATUM

ID #	DESC.	NAVD 88 (FEET)	NAVD 88 (METERS)	SUMMERLIN DATUM
NO. 01	RIVET & PLATE IN TOP OF CURB, NE CORNER OF CHARLESTON BLVD. AND HUALAPAI WAY. (NO. 01V09-36SES)	2312.23	887.650	2910.05

## PARK VISTA DR. & VISTA RUN DR.(PUBLIC)

HORIZ. 1" = 20'  
VERT. 1" = 5'

**NOTE**  
THIS SET OF DRAWINGS IS BASED UPON NAVD 88 DATUM. PREVIOUS DRAWINGS MAY BE BASED ON OTHER DATUM. CARE SHOULD BE OBSERVED WHEN UTILIZING THIS SET OF DRAWINGS.

APPROVAL:  
*Robert S. ...* 1st. APP. 11-16-00  
LAS VEGAS VALLEY WATER DISTRICT DATE

SHEET 23  
23 OF 52 SHEETS  
JOB NO. 02020.222