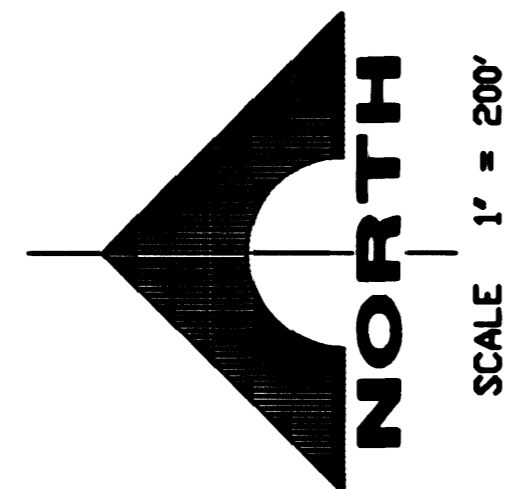


LUMINAIRE / POLE TYPE SCHEDULE					
CIRCUIT	TYPE	CIRCUIT	TYPE	CIRCUIT	TYPE
1A*	2B	5A	2B	10A*	2A
1B*	2B	5B	2B	10B*	2A
1C*	2A MOD 1	5C**	2A MOD 1	10C*	2A MOD 1
2A	2B	6A*	2B	11A*	2A
2B	2B	6B*	2B	11B*	2A
2C**	2A MOD 1	7A	2B	12A*	2A MOD 1
3A	2B	7B	2B	13A*	2A
3B	2B	8A*	2B	14A*	2A
4A*	2B	8B*	2B		
4B*	2B	9A*	2B		
		9B*	2B		

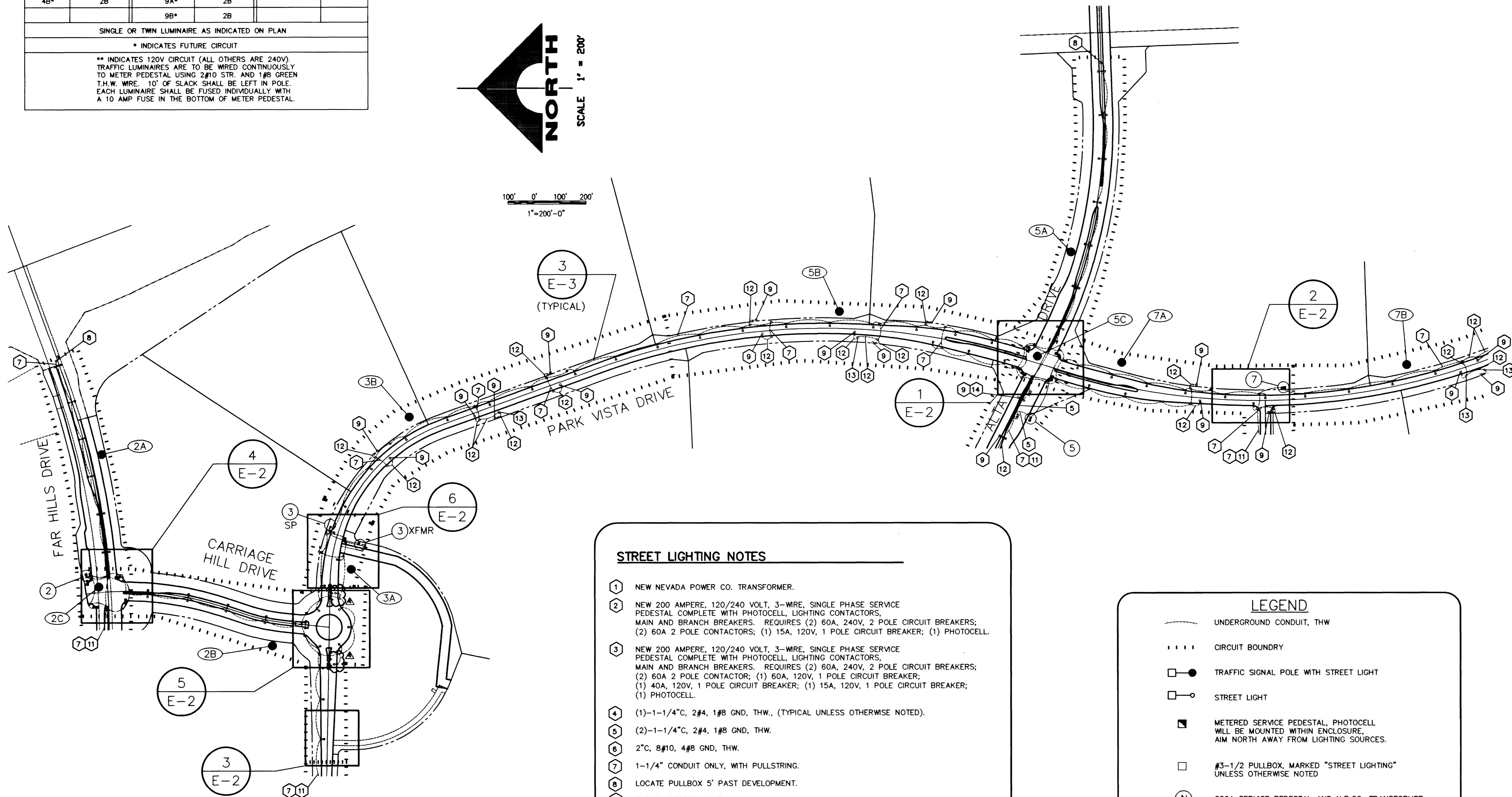
SINGLE OR TWN LUMINAIRE AS INDICATED ON PLAN

\* INDICATES FUTURE CIRCUIT

\*\* INDICATES 120V CIRCUIT (ALL OTHERS ARE 240V). TRAFFIC LUMINAIRES ARE TO BE WIRED CONTINUOUSLY TO METER PEDESTAL USING 2#10 STR. AND 1#8 GREEN T.H.W. WIRE. 10' OF SLACK SHALL BE LEFT IN POLE. EACH LUMINAIRE SHALL BE FUSED INDIVIDUALLY WITH A 10 AMP FUSE IN THE BOTTOM OF METER PEDESTAL.



100' 0' 100' 200'  
1"=200'-0"

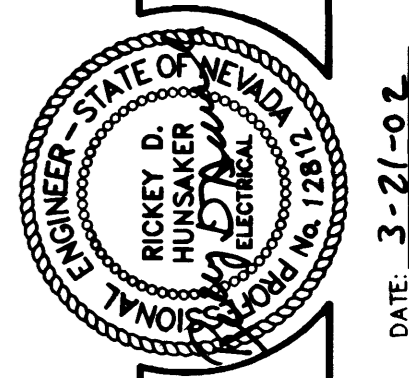


**STREET LIGHTING NOTES**

- 1 NEW NEVADA POWER CO. TRANSFORMER.
- 2 NEW 200 AMPERE, 120/240 VOLT, 3-WIRE, SINGLE PHASE SERVICE PEDESTAL COMPLETE WITH PHOTOCELL, LIGHTING CONTACTORS, MAIN AND BRANCH BREAKERS. REQUIRES (2) 60A, 240V, 2 POLE CIRCUIT BREAKERS; (2) 60A 2 POLE CONTACTORS; (1) 15A, 120V, 1 POLE CIRCUIT BREAKER; (1) PHOTOCELL.
- 3 NEW 200 AMPERE, 120/240 VOLT, 3-WIRE, SINGLE PHASE SERVICE PEDESTAL COMPLETE WITH PHOTOCELL, LIGHTING CONTACTORS, MAIN AND BRANCH BREAKERS. REQUIRES (2) 60A, 240V, 2 POLE CIRCUIT BREAKERS; (2) 60A 2 POLE CONTACTOR; (1) 60A, 120V, 1 POLE CIRCUIT BREAKER; (1) 40A, 120V, 1 POLE CIRCUIT BREAKER; (1) 15A, 120V, 1 POLE CIRCUIT BREAKER; (1) PHOTOCELL.
- 4 (1)-1-1/4"C, 2#4, 1#8 GND, THW., (TYPICAL UNLESS OTHERWISE NOTED).
- 5 (2)-1-1/4"C, 2#4, 1#8 GND, THW.
- 6 2"C, 8#10, 4#8 GND, THW.
- 7 1-1/4" CONDUIT ONLY, WITH PULLSTRING.
- 8 LOCATE PULLBOX 5' PAST DEVELOPMENT.
- 9 FUTURE STREET LIGHT
- 10 #3-1/2 PULLBOX MARKED "STREET LIGHTING" (TYPICAL UNLESS OTHERWISE NOTED).
- 11 STUB AND CAP CONDUIT 5' PAST DEVELOPMENT.
- 12 FUTURE CONDUIT
- 13 FUTURE PULLBOX
- 14 PLACE #3-1/2 PULLBOX AT THIS LOCATION. RUN CONDUIT FOR CIRCUIT 5A ONLY THROUGH PULLBOX. REMAINING CONDUITS SHALL BE ROUTED SO AS NOT TO INTERFERE WITH PLACEMENT OF FUTURE STREETLIGHT AND FOUNDATION AT THIS LOCATION.

**LEGEND**

- UNDERGROUND CONDUIT, THW
- CIRCUIT BOUNDARY
- TRAFFIC SIGNAL POLE WITH STREET LIGHT
- STREET LIGHT
- METERED SERVICE PEDESTAL, PHOTOCELL WILL BE MOUNTED WITHIN ENCLOSURE, AIM NORTH AWAY FROM LIGHTING SOURCES.
- #3-1/2 PULLBOX, MARKED "STREET LIGHTING" UNLESS OTHERWISE NOTED
- 200A SERVICE PEDESTAL AND N.P.CO. TRANSFORMER
- CIRCUIT DESIGNATION: (CONTAINED WITHIN BOUNDARY)  
N = SERVICE PEDESTAL  
X = CIRCUIT



DESIGN	JTB	DATE	DESCRIPTION
A	JTB	03/05	ADD STREET LIGHTS AT BOUNDARIES
B	JTB	05/21	RELOCATE PESTAL/RELOCATE STREET LIGHTS/CLV COM
C	JTB	02/02	SUBMITTAL REVISIONS
D	JTB	11/29	CLV COMMENTS ON UNIT 2
E	JTB	11/29	CLV COMMENTS ON MASTER PLAN REVISION C
F	JTB	10/26	CLV COMMENTS ON MASTER PLAN REVISION B
G	JTB	10/09	CLV COMMENTS ON MASTER PLAN REVISION A
H	JTB	3/29	ORIGINAL SUBMITTAL

**G.C. WALLACE, INC.**  
Engineering/Architecture  
1555 SOUTH RAINBOW BLVD./LAS VEGAS, NEVADA 89146  
TELEPHONE: (702) 804-2000 • FAX: (702) 804-2299  
G:\62020-222\dwg\improvements\03\_05\_02\_V20-2-E1.dwg

SUMMERLIN  
VILLAGE 20 - UNIT 2  
STREET LIGHTING PLAN  
SHEET  
E-1  
50 OF 52 SHTS