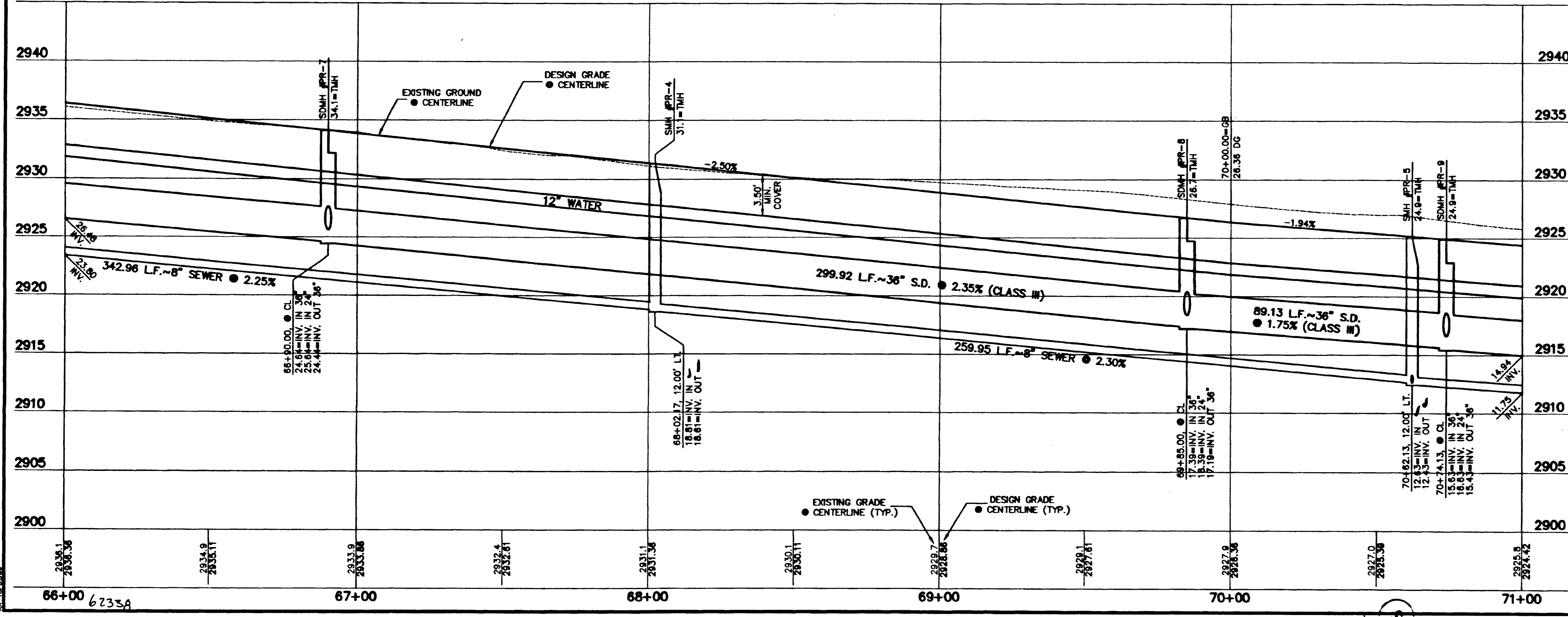
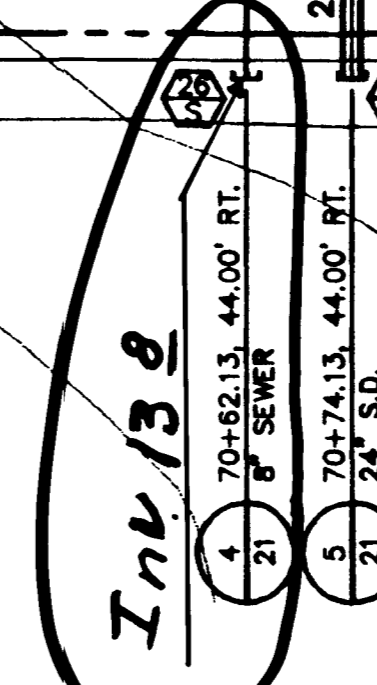
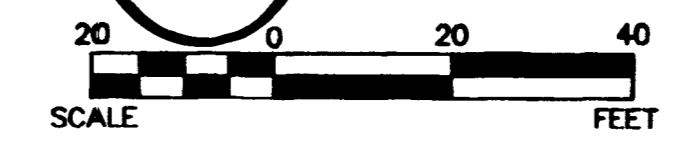


NOTE: THIS SET OF DRAWINGS IS BASED UPON SUMMERLIN DATUM. PREVIOUS DRAWINGS MAY BE BASED ON OTHER DATUM. CARE SHOULD BE OBSERVED WHEN UTILIZING THIS SET OF DRAWINGS.

BENCHMARK			
ID #	DESC.	NAVD 83 (FEET)	SUMMERLIN DATUM (METERS)
No. 3855	RIVET & PLATE IN TOP OF CURB, NE CORNER OF RETURN OF CHARLESTON BLVD. AND HUALAPAI WAY. (NO. OLVOB-3855)	2912.23'	867.650
No. 3856		2810.00'	

* THIS PROJECT BASED ON SUMMERLIN DATUM

PARK RUN DRIVE
 SCALE: HORIZ. 1" = 20'
 VERT. 1" = 5'



CURVE DATA (1 INDICATES CURVE NUMBER)

CURVE	DELTA	RADIUS	LENGTH	TANGENT
1	97°32'21"	1486.00'	189.46'	89.99'
2	97°32'21"	1500.00'	202.17'	101.24'
3	97°32'21"	1500.00'	204.67'	102.50'
4	91°28'57"	1020.00'	28.30'	13.20'
5	100°08'07"	980.00'	25.30'	12.34'
6	91°28'57"	980.00'	25.30'	12.68'

NOTE: CURVE DATA REPRESENTS PARTIAL CURVE, THIS SHEET ONLY.

CONSTRUCTION NOTES

- IMPROVEMENTS**
- INSTALL A.C. PAVEMENT PER STREET SECTIONS, SEE SHEET 19
 - INSTALL "L" TYPE CURB & GUTTER (S-47)
 - INSTALL "A" TYPE ISLAND CURB (S-50)
 - INSTALL HANDICAP RAMP CURB DEPRESSION (S-73)
 - WATER CROSSING PER L.V.V.W.D. STANDARDS (S-26)

- WATER**
- INSTALL TEMP. PLUG & CAP W/ 2" BLOW-OFF ASSEMBLY
 - INSTALL FIRE HYDRANT ASSEMBLY (S-33)
 - INSTALL 12" GATE VALVE & BOX (S-34)
 - INSTALL 12" TEE

- SEWER**
- INSTALL 48" DIA. SEWER MANHOLE (S-1)
 - INSTALL TEMPORARY PLUG

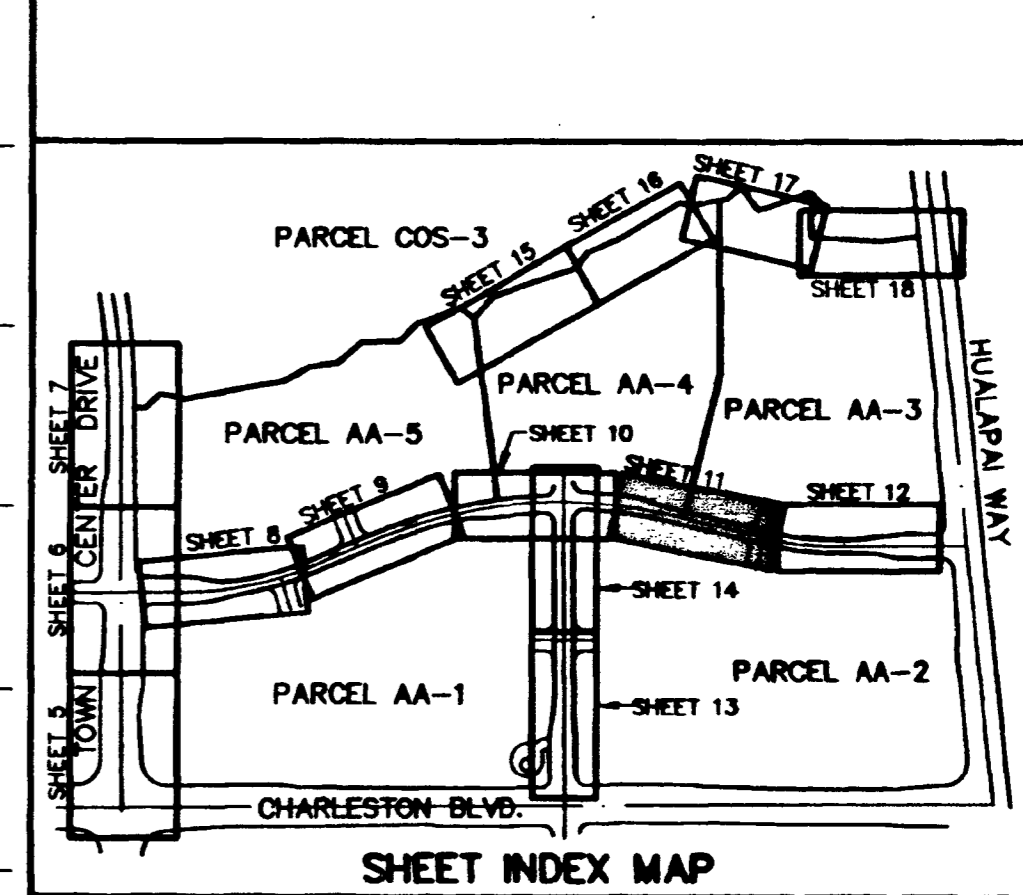
- STORM DRAIN**
- INSTALL TYPE I STORM DRAIN MANHOLE (S-12)
 - INSTALL TYPE II STORM DRAIN MANHOLE (S-13)
 - INSTALL TEMPORARY PLUG
 - INSTALL TYPE "C" DROP INLET (S-14)
 - INSTALL MODIFIED TYPE "C" DROP INLET (S-20)

- STREET LIGHTING**
- STREET LIGHT OR COMMON TRENCH, SEE ELECTRICAL PLAN
 - SINGLE STREET LIGHT, SEE ELECTRICAL PLAN (S-2)

- IRRIGATION**
- BANK "A": 1-8" & 2-4" SDR35 PVC

NOTES

- ALL EXISTING UTILITY CROSSINGS MUST BE VERIFIED PRIOR TO CONSTRUCTION OF ANY MAIN LINES OR LATERALS THAT MAY BE ADVERSELY EFFECTED. ANY DISCREPANCIES IN LOCATION AND/OR ELEVATION MUST BE PROVIDED TO THE ENGINEER FOR ACCEPTANCE PRIOR TO CONSTRUCTION.
- ALL COMMON LOTS AS SHOWN HEREIN TO BE PRIVATELY MAINTAINED BY THE H.O.A.
- ALL WATER GATE VALVES, SERVICE GATE VALVES, AND FIRE HYDRANT GATE VALVES ARE TO BE CONSTRUCTED UNDER A.C. PAVEMENT. IT IS THE CONTRACTOR'S RESPONSIBILITY TO VERIFY THAT ALL WATER VALVE CANS DO NOT CREATE CONFLICTS WITH THE PROPOSED CURB LINE PRIOR TO PLACEMENT OF CONCRETE. ALL WATER FACILITIES SHOWN IN THESE DRAWINGS HAVE BEEN "SCALED UP" FOR CLARITY ONLY.



APPROVAL: *Armin Cliff*
 LAS VEGAS VALLEY WATER DISTRICT
 DATE: 8-6-97

DATE: 8-6-97
 REV. DATE: _____
 REVISION: _____
 P.E. NO. 10289
 RECOMMENDED BY: BERT A. HUGHES
 G.C. WALLACE, INC.
 Engineering/Architecture
 SUMMERLIN DIVISION (702) 343-0897
 SUMMERLIN, NEVADA 89102 (702) 343-1200
SUMMERLIN
VIL. 12 PARCEL AA IMPROVEMENTS
PARK RUN DRIVE
PLAN & PROFILE
STA 66+00 TO 71+00
 SHEET
11
 SH 11 OF 28
 JOB NO. 62012.214

44-PP F-1 JUL 25 11:10:22 1997 PLOT BY S.T.S.

107Y-4463-AA
 * SEWER AS BUILT *