

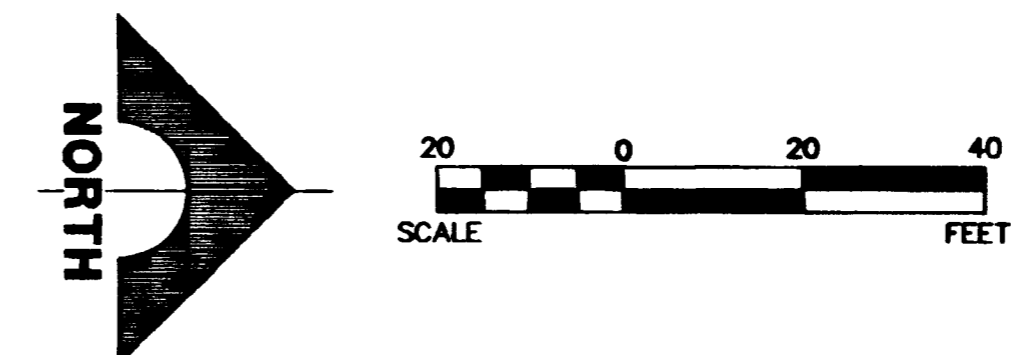
**NOTE:**  
THIS SET OF DRAWINGS IS BASED UPON SUMMERLIN DATUM. PREVIOUS DRAWINGS MAY BE BASED ON OTHER DATUM. CARE SHOULD BE OBSERVED WHEN UTILIZING THIS SET OF DRAWINGS.

**BENCHMARK**

ID #	DESC.	HAND IN (FEET)	HAND IN (METERS)	SUMMERLIN DATUM
No. CLVOR-36SES	NET & PLATE IN TOP OF CURB, NE RETURN OF CHARLESTON BLVD. AND HUALAPAI WAY. (NO. OLVOB-36SES)	2912.23'	887.650	2810.05'

\* THIS PROJECT BASED ON SUMMERLIN DATUM

**INDIGO DRIVE**  
SCALE: HORIZ. 1" = 20'  
VERT. 1" = 5'



**CURVE DATA** (1) INDICATES CURVE NUMBER

**CONSTRUCTION NOTES**

**IMPROVEMENTS**

- INSTALL A.C. PAVEMENT PER STREET SECTIONS, SEE SHEET 19
- INSTALL "L" TYPE CURB & GUTTER (S-17)
- INSTALL "A" TYPE ISLAND CURB (S-50)
- INSTALL HANDICAP RAMP CURB DEPRESSION (S-73)
- WATER CROSSING PER L.V.V.W.D. STANDARDS (2)

**WATER**

- INSTALL TEMP. PLUG & CAP W/ 2" BLOW-OFF ASSEMBLY (U-33)
- INSTALL FIRE HYDRANT ASSEMBLY (U-33)
- INSTALL 12" GATE VALVE & BOX (U-34)
- INSTALL 12" TEE

**SEWER**

- INSTALL 48" DIA. SEWER MANHOLE (S-1)
- INSTALL TEMPORARY PLUG

**STORM DRAIN**

- INSTALL TYPE I STORM DRAIN MANHOLE (D1-D2)
- INSTALL TYPE II STORM DRAIN MANHOLE (D1-D4)
- INSTALL TEMPORARY PLUG
- INSTALL TYPE "C" DROP INLET (D-14)
- INSTALL MODIFIED TYPE "C" DROP INLET (1-20)

**STREET LIGHTING**

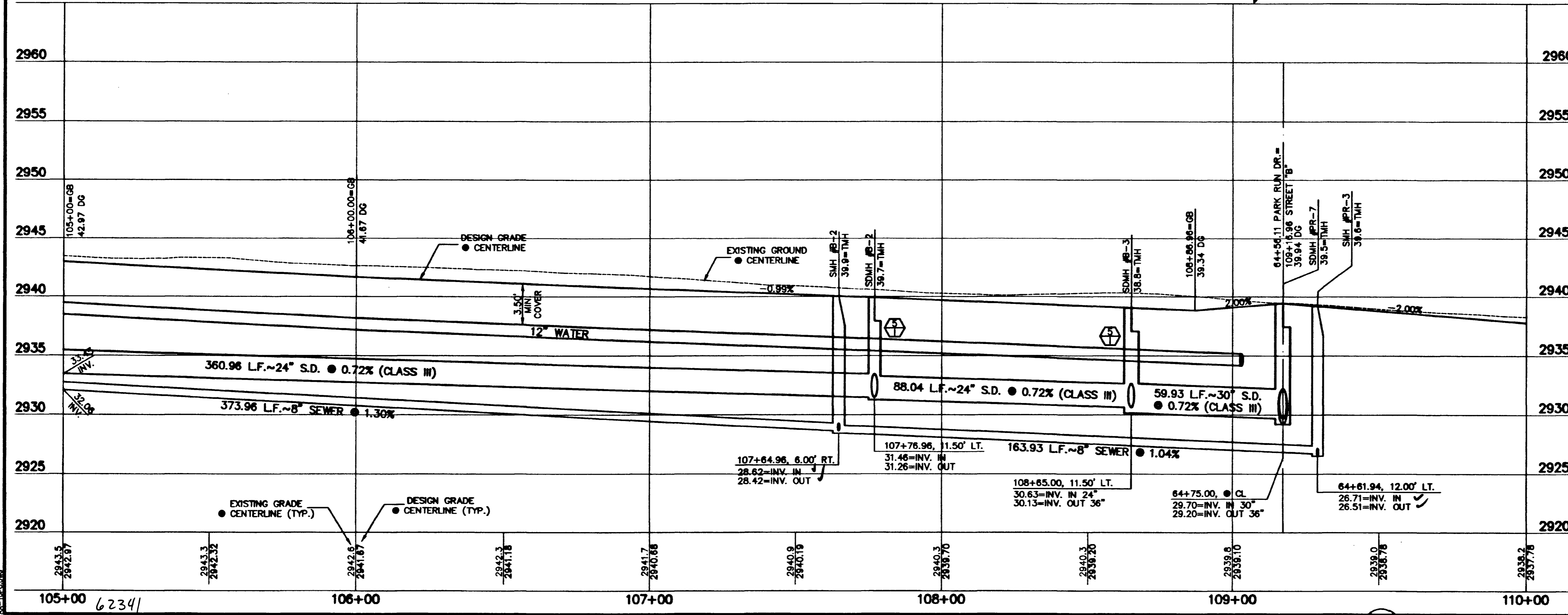
- STREET LIGHT OR COMMON TRENCH, SEE ELECTRICAL PLAN
- SINGLE STREET LIGHT, SEE ELECTRICAL PLAN (E-2)

**IRRIGATION**

- BANK "A": 1-6" & 2-4" SDR35 PVC

**NOTES**

- ALL EXISTING UTILITY CROSSINGS MUST BE VERIFIED PRIOR TO CONSTRUCTION OF ANY MAIN LINES OR LATERALS THAT MAY BE ADVERSELY EFFECTED. ANY DISCREPANCIES IN LOCATION AND/OR ELEVATION MUST BE PROVIDED TO THE ENGINEER FOR ACCEPTANCE PRIOR TO CONSTRUCTION.
- ALL COMMON LOTS AS SHOWN HEREIN TO BE PRIVATELY MAINTAINED BY THE H.O.A.
- ALL WATER GATE VALVES, SERVICE GATE VALVES, AND FIRE HYDRANT GATE VALVES ARE TO BE CONSTRUCTED UNDER A.C. PAVEMENT. IT IS THE CONTRACTOR'S RESPONSIBILITY TO VERIFY THAT ALL WATER VALVE CANS DO NOT CREATE CONFLICTS WITH THE PROPOSED CURB LINE PRIOR TO PLACEMENT OF CONCRETE. ALL WATER FACILITIES SHOWN IN THESE DRAWINGS HAVE BEEN "SCALED UP" FOR CLARITY ONLY.



**SHEET INDEX MAP**

**APPROVAL:**

*Amie Craft*  
LAS VEGAS VALLEY WATER DISTRICT

DATE: 8-6-97

**SHEET 14**  
SHT 14 OF 28

**G.C. WALLACE, INC.**  
Engineering/Architecture  
1555 SOUTH RAINBOW BLVD., LAS VEGAS, NEVADA 89102 (702) 363-1200  
SUMMERLIN DIVISION: (702) 363-0991

**SUMMERLIN**  
VIL. 12 PARCEL AA IMPROVEMENTS  
INDIGO DRIVE  
PLAN & PROFILE  
STA 105+00 TO 110+00

**JOB NO. 62012.214**

AA-PP F11 JUL 25 11:15:56 1997 PLOT BY S.T.S.

**107Y-4463-AA**  
**\* SEWER AS BUILT \***