

**CURVE DATA** ① INDICATES CURVE NUMBER

CURVE	DELTA	RADIUS	LENGTH	TANGENT
1	131°54'1"	300.00'	68.44'	34.87'
2	180°00'0"	8.33'	26.17'	---
3	072°40'7"	300.00'	38.78'	19.41'

NOTE: CURVE DATA REPRESENTS PARTIAL CURVE, THIS SHEET ONLY.

**CONSTRUCTION NOTES**

- IMPROVEMENTS**
- ① INSTALL A.C. PAVEMENT PER STREET SECTIONS, SEE SHEET 19
  - ② INSTALL "L" TYPE CURB & GUTTER (S-47)
  - ③ INSTALL "A" TYPE ISLAND CURB (S-50)
  - ④ INSTALL HANDICAP RAMP CURB DEPRESSION (S-75)
  - ⑤ WATER CROSSING PER L.V.V.W.D. STANDARDS (2/20)

- WATER**
- ⑥ INSTALL TEMP. PLUG & CAP W/ 2" BLOW-OFF ASSEMBLY
  - ⑦ INSTALL FIRE HYDRANT ASSEMBLY (U-33)
  - ⑧ INSTALL 12" GATE VALVE & BOX (U-24)
  - ⑨ INSTALL 12" TEE

- SEWER**
- ⑩ INSTALL 48" DIA. SEWER MANHOLE (SD-18)
  - ⑪ INSTALL TEMPORARY PLUG

- STORM DRAIN**
- ⑫ INSTALL TYPE I STORM DRAIN MANHOLE (D1,D2)
  - ⑬ INSTALL TYPE II STORM DRAIN MANHOLE (D1,D4)
  - ⑭ INSTALL TEMPORARY PLUG
  - ⑮ INSTALL TYPE "C" DROP INLET (D-14)
  - ⑯ INSTALL MODIFIED TYPE "C" DROP INLET (1/20)

- STREET LIGHTING**
- ⑰ STREET LIGHT OR COMMON TRENCH, SEE ELECTRICAL PLAN
  - ⑱ SINGLE STREET LIGHT, SEE ELECTRICAL PLAN (E-2)

- IRRIGATION**
- ⑲ BANK "A"; 1-6" & 2-4" SDR35 PVC

**NOTES**

1. ALL EXISTING UTILITY CROSSINGS MUST BE VERIFIED PRIOR TO CONSTRUCTION OF ANY MAIN LINES OR LATERALS THAT MAY BE ADVERSELY EFFECTED. ANY DISCREPANCIES IN LOCATION AND/OR ELEVATION MUST BE PROVIDED TO THE ENGINEER FOR ACCEPTANCE PRIOR TO CONSTRUCTION.
2. ALL COMMON LOTS AS SHOWN HEREIN TO BE PRIVATELY MAINTAINED BY THE H.O.A.
3. ALL WATER GATE VALVES, SERVICE GATE VALVES, AND FIRE HYDRANT GATE VALVES ARE TO BE CONSTRUCTED UNDER A.C. PAVEMENT. IT IS THE CONTRACTOR'S RESPONSIBILITY TO VERIFY THAT ALL WATER VALVE CANS DO NOT CREATE CONFLICTS WITH THE PROPOSED CURB LINE PRIOR TO PLACEMENT OF CONCRETE. ALL WATER FACILITIES SHOWN IN THESE DRAWINGS HAVE BEEN "SCALED UP" FOR CLARITY ONLY.

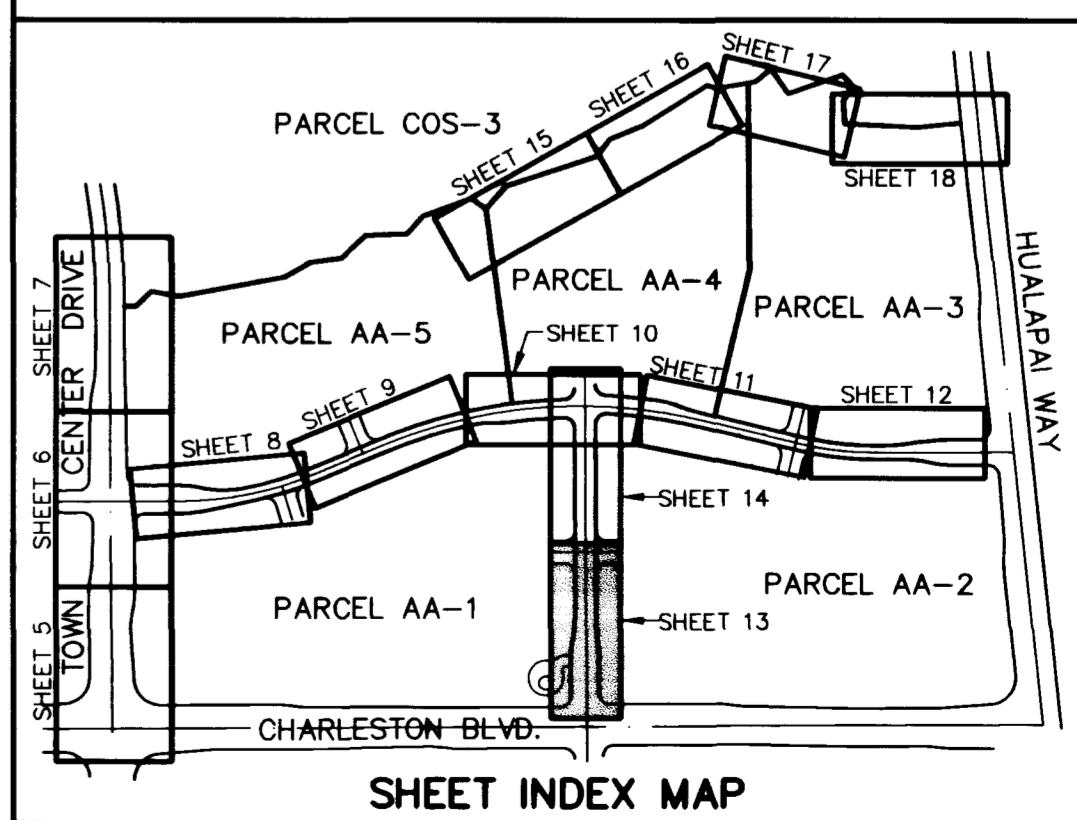
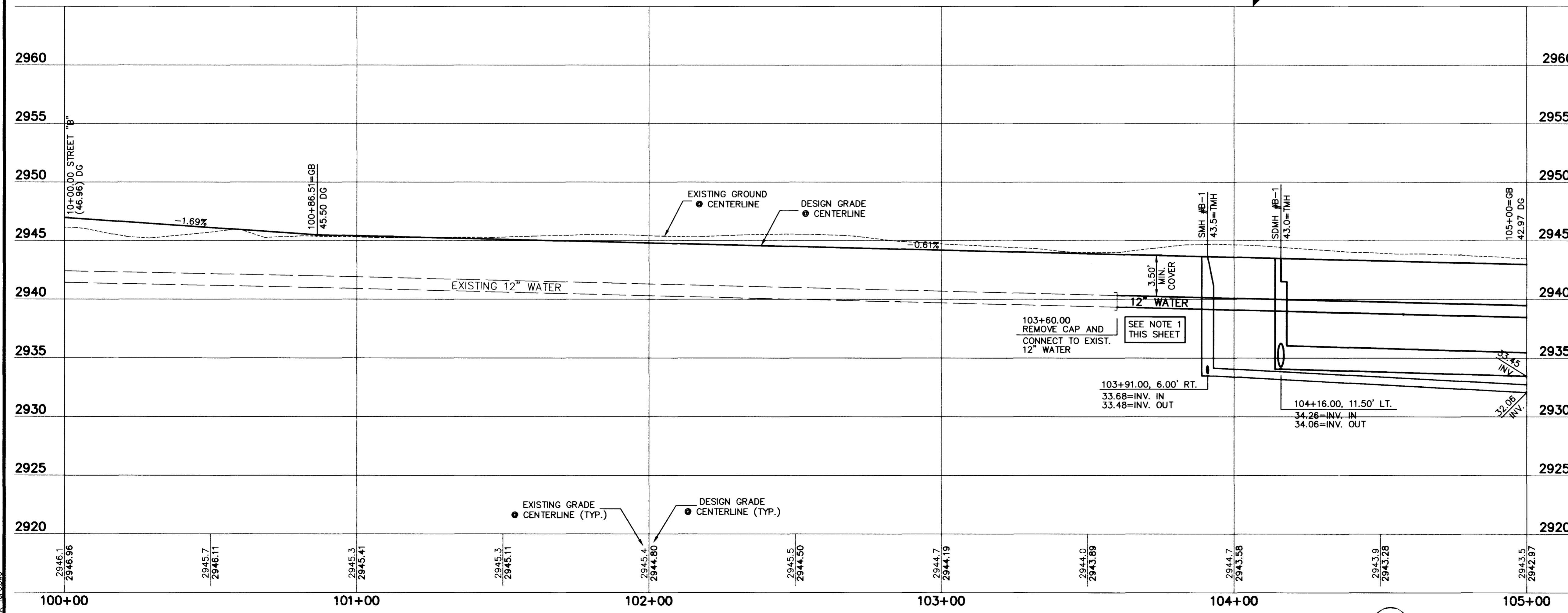
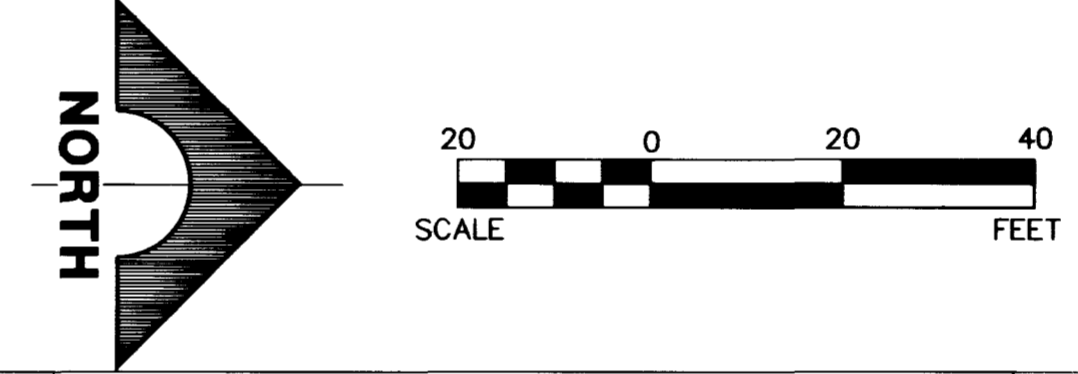
**BENCHMARK**

ID #	DESC.	NAVD 88 (FEET)	NAVD 88 (METERS)	SUMMERLIN DATUM
No. OLV09-36SES	RIVET & PLATE IN TOP OF CURB, NE RETURN OF CHARLESTON BLVD. AND HUALAPAI WAY. (NO. OLV09-36SES)	2912.23'	887.650	2910.05'

\* THIS PROJECT BASED ON SUMMERLIN DATUM

**INDIGO DRIVE**

SCALE: HORIZ. 1" = 20'  
VERT. 1" = 5'



**APPROVAL:**

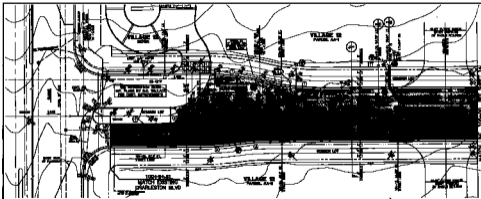
*Annis Craft*  
LAS VEGAS VALLEY WATER DISTRICT

DATE: 8.6.97

G.C. WALLACE, INC.  
 Engineering/Architecture  
 1555 SOUTH RAINBOW BLVD. LAS VEGAS, NEVADA 89102 (702) 363-1200  
 SUMMERLIN DIVISION: (702) 363-0991

RECOMMENDED  
 BERT A. HUGHES  
 P.E. NO. 10299

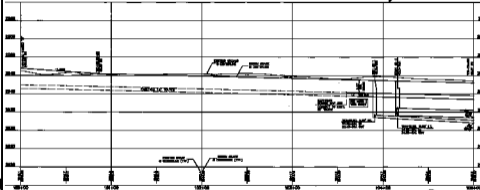
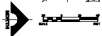
DATE: 8.6.97  
 SHEET NO. 13 OF 28  
 JOB NO. 62012.214



INDIGO DRIVE  
SHEET NO. 1-1

DATE	BY	CHKD BY
10/1/77	J. J. [unclear]	[unclear]
10/1/77	[unclear]	[unclear]
10/1/77	[unclear]	[unclear]

INDIGO DRIVE  
SHEET NO. 1-1



**OWNER DATA** (OWNER'S NAME)

DATE	BY	CHKD BY
10/1/77	J. J. [unclear]	[unclear]
10/1/77	[unclear]	[unclear]
10/1/77	[unclear]	[unclear]

**CONSTRUCTIVE NOTES**

**REVISIONS**

- REVISION 1: [unclear]
- REVISION 2: [unclear]
- REVISION 3: [unclear]
- REVISION 4: [unclear]
- REVISION 5: [unclear]
- REVISION 6: [unclear]
- REVISION 7: [unclear]
- REVISION 8: [unclear]
- REVISION 9: [unclear]
- REVISION 10: [unclear]
- REVISION 11: [unclear]
- REVISION 12: [unclear]
- REVISION 13: [unclear]
- REVISION 14: [unclear]
- REVISION 15: [unclear]
- REVISION 16: [unclear]
- REVISION 17: [unclear]
- REVISION 18: [unclear]
- REVISION 19: [unclear]
- REVISION 20: [unclear]
- REVISION 21: [unclear]
- REVISION 22: [unclear]
- REVISION 23: [unclear]
- REVISION 24: [unclear]
- REVISION 25: [unclear]
- REVISION 26: [unclear]
- REVISION 27: [unclear]
- REVISION 28: [unclear]
- REVISION 29: [unclear]
- REVISION 30: [unclear]
- REVISION 31: [unclear]
- REVISION 32: [unclear]
- REVISION 33: [unclear]
- REVISION 34: [unclear]
- REVISION 35: [unclear]
- REVISION 36: [unclear]
- REVISION 37: [unclear]
- REVISION 38: [unclear]
- REVISION 39: [unclear]
- REVISION 40: [unclear]
- REVISION 41: [unclear]
- REVISION 42: [unclear]
- REVISION 43: [unclear]
- REVISION 44: [unclear]
- REVISION 45: [unclear]
- REVISION 46: [unclear]
- REVISION 47: [unclear]
- REVISION 48: [unclear]
- REVISION 49: [unclear]
- REVISION 50: [unclear]
- REVISION 51: [unclear]
- REVISION 52: [unclear]
- REVISION 53: [unclear]
- REVISION 54: [unclear]
- REVISION 55: [unclear]
- REVISION 56: [unclear]
- REVISION 57: [unclear]
- REVISION 58: [unclear]
- REVISION 59: [unclear]
- REVISION 60: [unclear]
- REVISION 61: [unclear]
- REVISION 62: [unclear]
- REVISION 63: [unclear]
- REVISION 64: [unclear]
- REVISION 65: [unclear]
- REVISION 66: [unclear]
- REVISION 67: [unclear]
- REVISION 68: [unclear]
- REVISION 69: [unclear]
- REVISION 70: [unclear]
- REVISION 71: [unclear]
- REVISION 72: [unclear]
- REVISION 73: [unclear]
- REVISION 74: [unclear]
- REVISION 75: [unclear]
- REVISION 76: [unclear]
- REVISION 77: [unclear]
- REVISION 78: [unclear]
- REVISION 79: [unclear]
- REVISION 80: [unclear]
- REVISION 81: [unclear]
- REVISION 82: [unclear]
- REVISION 83: [unclear]
- REVISION 84: [unclear]
- REVISION 85: [unclear]
- REVISION 86: [unclear]
- REVISION 87: [unclear]
- REVISION 88: [unclear]
- REVISION 89: [unclear]
- REVISION 90: [unclear]
- REVISION 91: [unclear]
- REVISION 92: [unclear]
- REVISION 93: [unclear]
- REVISION 94: [unclear]
- REVISION 95: [unclear]
- REVISION 96: [unclear]
- REVISION 97: [unclear]
- REVISION 98: [unclear]
- REVISION 99: [unclear]
- REVISION 100: [unclear]

**APPROVAL**

DATE: 10/1/77

1877-4485-1A