

**CURVE DATA** (1 INDICATES CURVE NUMBER)

CURVE	DELTA	RADIUS	LENGTH	TANGENT
1	127°54'	1020.00'	218.94'	109.89'
2	127°54'	1000.00'	214.65'	107.74'
3	127°54'	980.00'	210.35'	105.58'
4	08°42'58"	700.00'	107.58'	53.89'
5	13°28'05"	300.00'	70.52'	35.42'
6	08°48'20"	700.00'	107.58'	53.90'
7	179°59'58"	9.83'	30.88'	---

NOTE: CURVE DATA REPRESENTS PARTIAL CURVE, THIS SHEET ONLY.

**CONSTRUCTION NOTES**

- IMPROVEMENTS**
- INSTALL A.C. PAVEMENT PER STREET SECTIONS, SEE SHEET 19
  - INSTALL "L" TYPE CURB & GUTTER
  - INSTALL "A" TYPE ISLAND CURB
  - INSTALL HANDICAP RAMP CURB DEPRESSION
  - WATER CROSSING PER L.V.V.W.D. STANDARDS

- WATER**
- INSTALL TEMP. PLUG & CAP W/ 2" BLOW-OFF ASSEMBLY
  - INSTALL FIRE HYDRANT ASSEMBLY
  - INSTALL 12" GATE VALVE & BOX
  - INSTALL 12" TEE

- SEWER**
- INSTALL 48" DIA. SEWER MANHOLE
  - INSTALL TEMPORARY PLUG

- STORM DRAIN**
- INSTALL TYPE I STORM DRAIN MANHOLE
  - INSTALL TYPE II STORM DRAIN MANHOLE
  - INSTALL TEMPORARY PLUG
  - INSTALL TYPE "C" DROP INLET
  - INSTALL MODIFIED TYPE "C" DROP INLET

- STREET LIGHTING**
- STREET LIGHT OR COMMON TRENCH, SEE ELECTRICAL PLAN
  - SINGLE STREET LIGHT, SEE ELECTRICAL PLAN

- IRRIGATION**
- BANK "A": 1-6" & 2-4" SDR35 PVC

**NOTES**

- ALL EXISTING UTILITY CROSSINGS MUST BE VERIFIED PRIOR TO CONSTRUCTION OF ANY MAIN LINES OR LATERALS THAT MAY BE ADVERSELY EFFECTED. ANY DISCREPANCIES IN LOCATION AND/OR ELEVATION MUST BE PROVIDED TO THE ENGINEER FOR ACCEPTANCE PRIOR TO CONSTRUCTION.
- ALL COMMON LOTS AS SHOWN HEREIN TO BE PRIVATELY MAINTAINED BY THE H.O.A.
- ALL WATER GATE VALVES, SERVICE GATE VALVES, AND FIRE HYDRANT GATE VALVES ARE TO BE CONSTRUCTED UNDER A.C. PAVEMENT. IT IS THE CONTRACTOR'S RESPONSIBILITY TO VERIFY THAT ALL WATER VALVE CANS DO NOT CREATE CONFLICTS WITH THE PROPOSED CURB LINE PRIOR TO PLACEMENT OF CONCRETE. ALL WATER FACILITIES SHOWN IN THESE DRAWINGS HAVE BEEN "SCALED UP" FOR CLARITY ONLY.

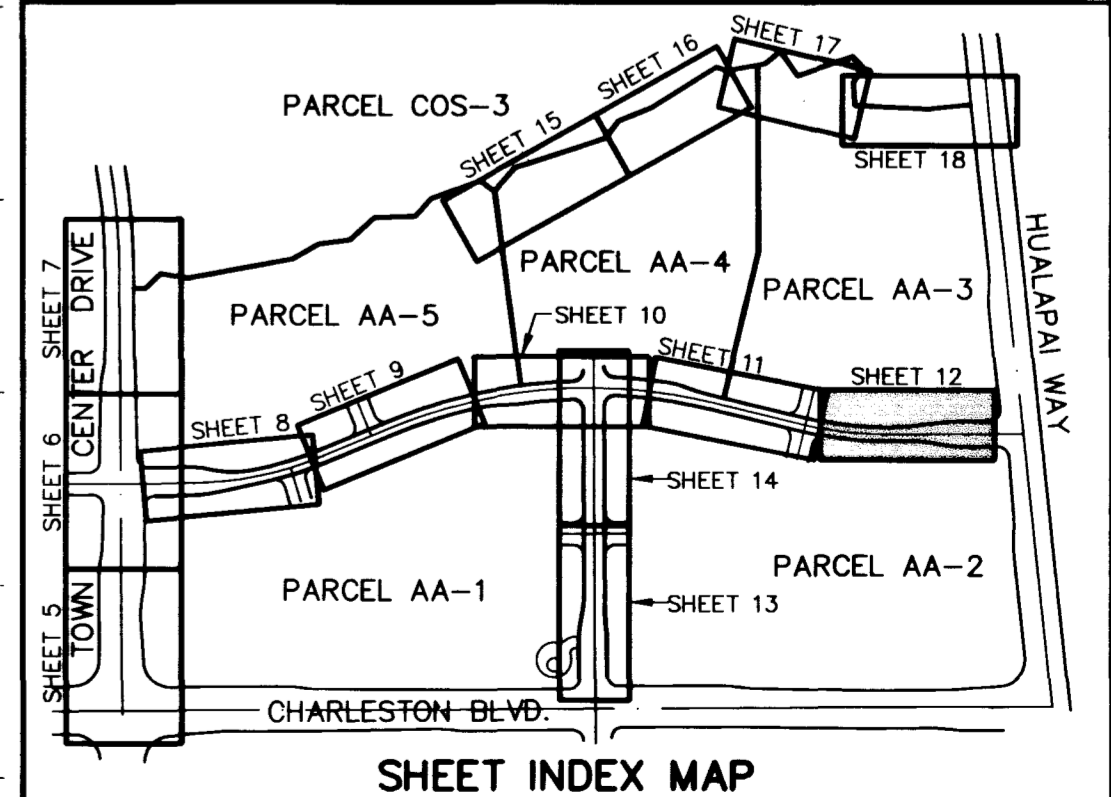
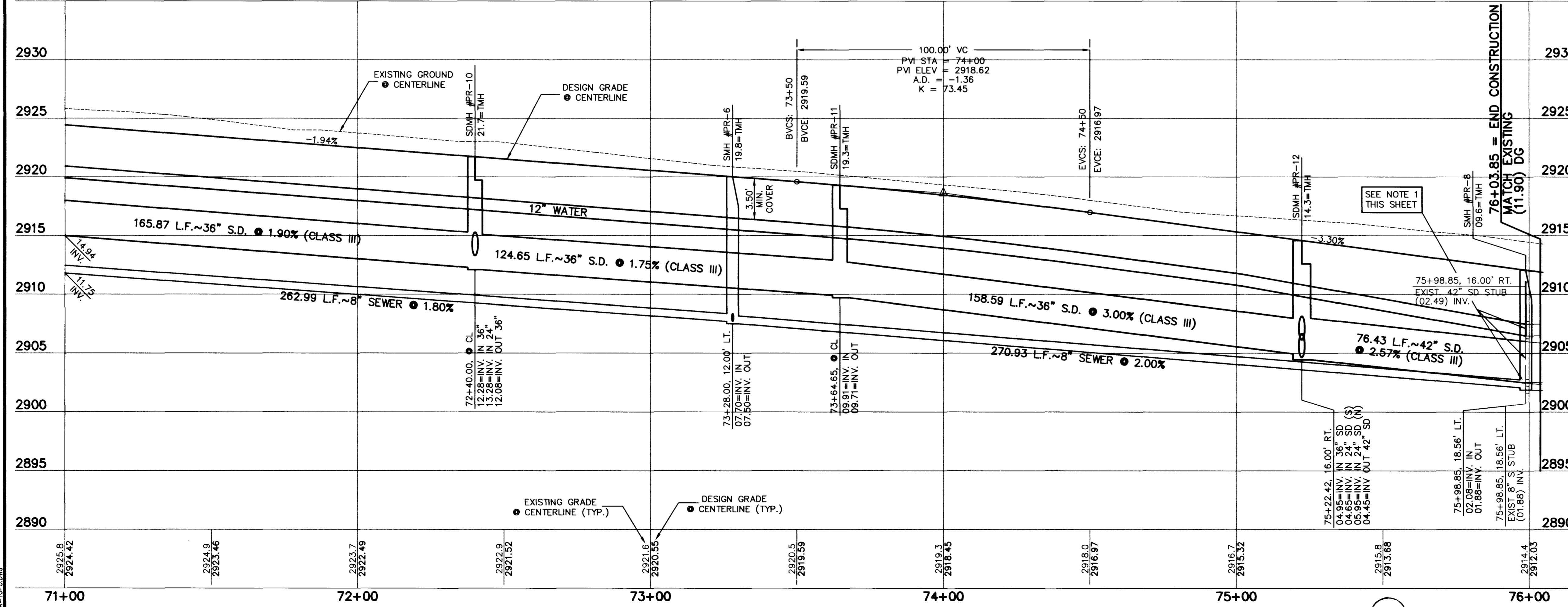
**BENCHMARK**

ID #	DESC.	NAVD 88 (FEET)	NAVD 88 (METERS)	SUMMERLIN DATUM
No. 01V09-36SES	RIVET & PLATE IN TOP OF CURB, NE RETURN OF CHARLESTON BLVD. AND HUALAPAI WAY. (NO. 01V09-36SES)	2912.23'	887.650	2910.05'

\* THIS PROJECT BASED ON SUMMERLIN DATUM

**PARK RUN DRIVE**

SCALE: HORIZ. 1" = 20'  
VERT. 1" = 5'



**APPROVAL:**

*Bonnie Craft*  
LAS VEGAS VALLEY WATER DISTRICT

DATE: 8/6/97

**RECOMMENDED**

BERT A. HUGHES  
P.E. NO. 10259

**REGISTERED PROFESSIONAL ENGINEER**  
STATE OF NEVADA  
DIVISION OF PROFESSIONAL ENGINEERING

G.C. WALLACE, INC.  
Engineering/Architecture  
555 SOUTH BOWEN BLVD., SUITE 200, LAS VEGAS, NEVADA 89102 (702) 363-1200  
SUMMERLIN DIVISION (702) 363-9991

**SUMMERLIN**

**VIL. 12 PARCEL AA IMPROVEMENTS**

**PARK RUN DRIVE**

**PLAN & PROFILE**

**STA. 71+00 TO 76+00**

SHEET 12 OF 26

**JOB NO. 62012.214**

107Y-4463-AA

