

HARRIS II
 PROJECT NO. 020203D
 DESIGNED BY: A. SCHEFFER
 CHECKED BY: J. LESSON
 DRAWN BY: J. LUCCHESI

LIGHTING PLAN

**SUMMERLIN ARBORS PARK
 POOL AND POOL BUILDING**

K 509268

RECEIVED

JUN 05 2002

CITY OF LAS VEGAS PERMITS

Date: 02-22-99

Project No. 020203D

Scale: 3/16" = 1'-0"

Drawn By: D.E.F.

NO.	DATE	REVISIONS
1	10/01/01	MISCELLANEOUS REVISIONS
2	05/21/02	FIELD REVISIONS

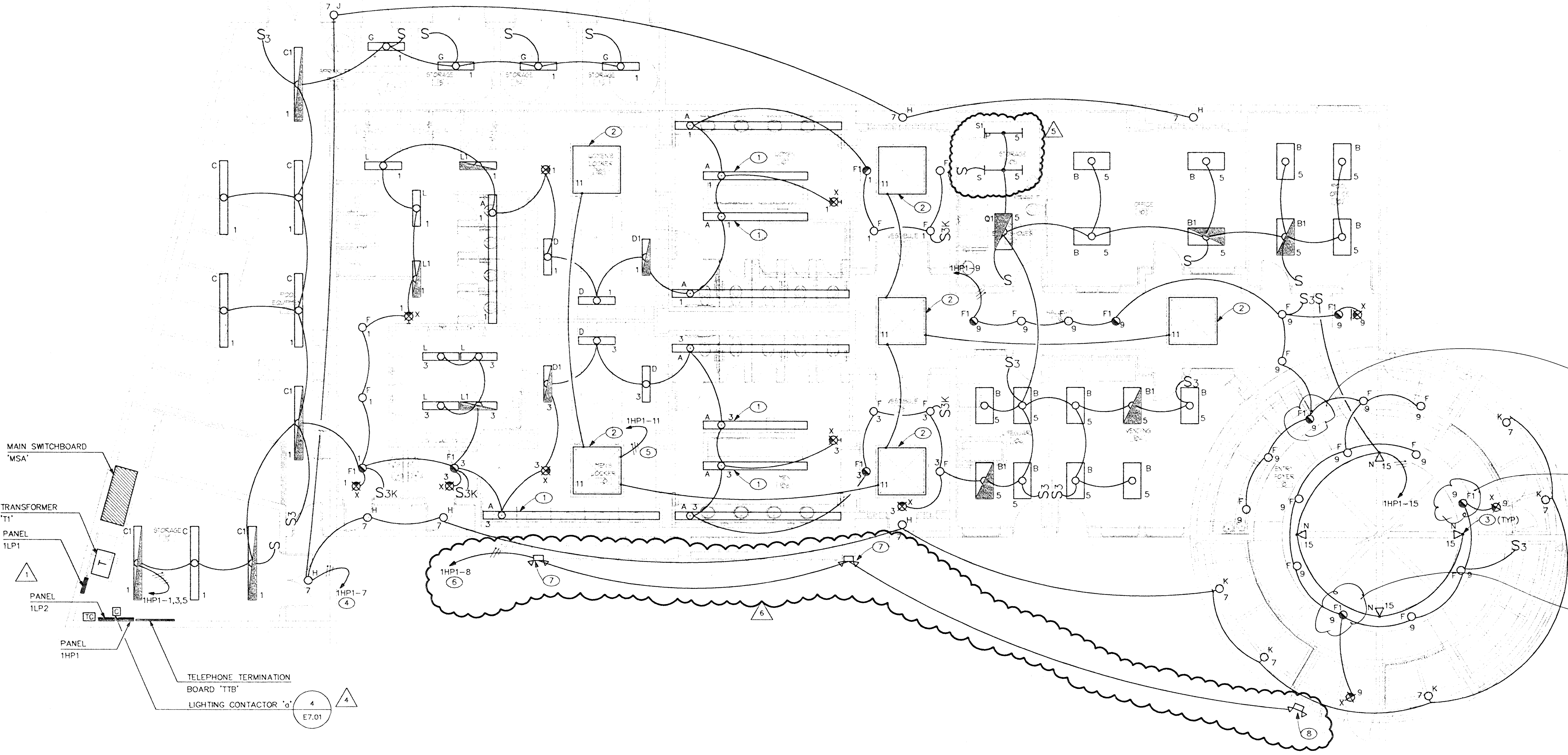
Sheet Number: **E201**

GENERAL NOTES

1. REFER TO ARCHITECTURAL REFLECTED CEILING PLAN FOR EXACT LOCATION OF ALL LIGHTING FIXTURES.
2. ALL EMERGENCY LIGHTING FIXTURES SHALL BE CAPABLE OF BEING SWITCHED ON OR OFF UNLESS INDICATED TO BE A NIGHT LIGHT.

SHEET NOTES

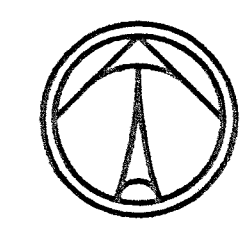
1. PROVIDE A 2 LAMP EMERGENCY BATTERY BALLAST UNIT IN FIXTURE. EXTEND A LOCAL UNSWITCHED LIGHTING CIRCUIT TO BATTERY UNIT. BALLAST SHALL COMPLY WITH LIGHTING FIXTURE SCHEDULE NOTE #5.
2. PROVIDE TYPE 'M' LIGHTING FIXTURES IN COVE OF SKYLIGHT. PROVIDE IN LENGTHS AS REQUIRED FOR CONTINUOUS END-TO-END FIT.
3. LOCATE TYPE 'N' LIGHTING FIXTURES ON TOP OF RING AND AIM AT HANGING SCULPTURE.
4. ROUTE CIRCUITING TO PANEL THRU LIGHTING CONTACTOR 'G'.
5. PROVIDE TORK #W302L TIME CLOCK IN NEMA 1 ENCLOSURE FOR CONTROL OF SKYLIGHTS. ROUTE CIRCUITING TO PANEL THRU TIME CLOCK.
6. CIRCUITING FOR EMERGENCY LIGHTING FIXTURES SHALL BE CONNECTED TO POOL DECK LIGHTING CIRCUIT AHEAD OF TIME CLOCK CONTROL SO THAT UNITS ACTIVATE UPON LOSS OF POWER.
7. PROVIDE HIGHLITES MODEL #12NX-12 LEAD CALCIUM DUAL HEAD EMERGENCY BATTERY UNIT ON COLUMN AT APPROXIMATELY 12'-0" A.F.F. UNIT SHALL BE U.L. WET LOCATION LABEL.
8. PROVIDE HIGHLITES MODEL #12NX-12 LEAD CALCIUM DUAL HEAD EMERGENCY BATTERY UNIT ON WALL AT APPROXIMATELY 11'-6" A.F.F. UNIT SHALL BE U.L. WET LOCATION LABEL.



Facilities
 TO CHECK
 BATTERY BALLAST

APPROVAL IS FOR CLOUDED
 AREAS OR LATEST REVISIONS
 ONLY. SEE ORIGINALS FOR
 OTHER REQUIREMENTS.

PLANS APPROVED
ELECTRICAL
 Building & Safety Dept.
 City of Las Vegas, Nevada
 EPH JUN 07 2002
 Date Not Include Structural, Architectural,
 Mechanical or Electrical in On-Site
 Engineering and Make No Change
 Without Approval Plan is
 Not a Permit to Violate Any Ordinance



LIGHTING PLAN
 SCALE: 3/16" = 1' - 0"

1024 801-95-11 11 2002/05/01/90

800 PILOT ROAD • SUITE A • LAS VEGAS, NEVADA 89110 • PHONE (702) 269-7111 FAX (702) 269-9111