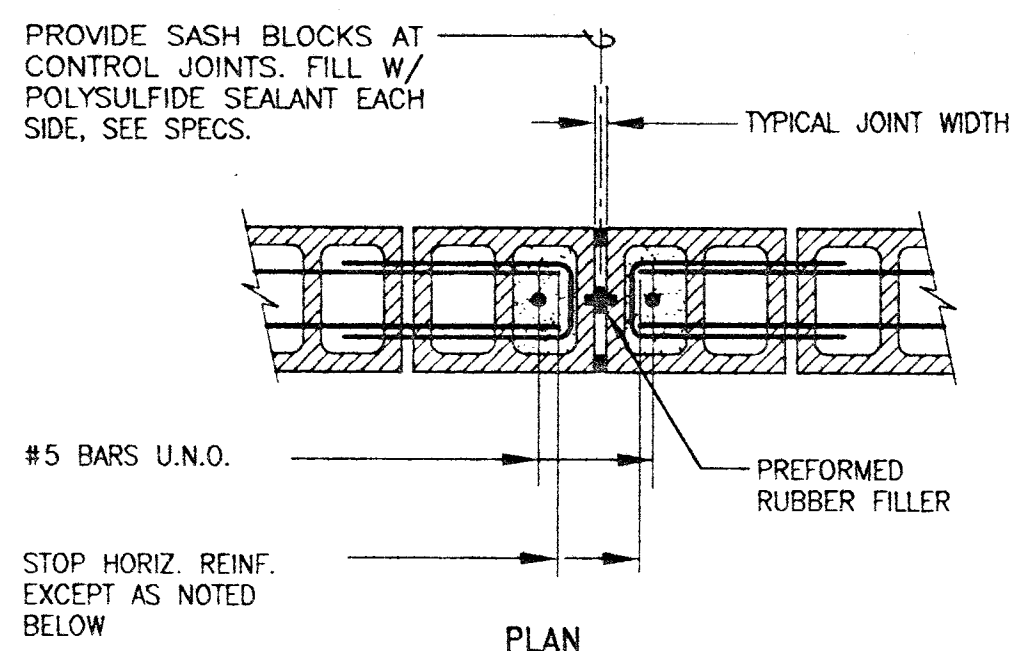


- NOTES:
- SEE PLAN FOR LEDGER SIZES AND ANCHORS. UNLESS NOTED OTHERWISE USE THIS DETAIL.
 - ALL DECK EDGES SHALL BE SUPPORTED.

LEDGER ANGLES

DETAIL 14



- NOTES:
- CONTRACTOR SHALL OBTAIN ARCHITECT'S APPROVAL OF JOINT LOCATIONS, WHICH SHALL NOT EXCEED 24'-0" O.C.
 - HORIZONTAL REINF. AT FLOOR AND ROOF LINES SHALL BE CONTINUOUS THRU JOINT.
 - CONCRETE BLOCK SHOWN - BRICK SIMILAR.
 - SAWCUT BLOCK OR BRICK AS REQ'D.

CMU WALL CONTROL JOINT

DETAIL 10

MASONRY WALL REINFORCING SCHEDULE			
WALL THICKNESS	f'c = 3000 psi		REMARKS
	HORIZ. BARS	VERT. BARS	
6" CMU	#4 @ 32"	#4 @ 32"	SINGLE MAT
8" CMU	(2)-#4 @ 48"	#5 @ 32"	SINGLE MAT
12" CMU	(2)-#4 @ 32"	(2)-#4 @ 32"	DOUBLE MAT

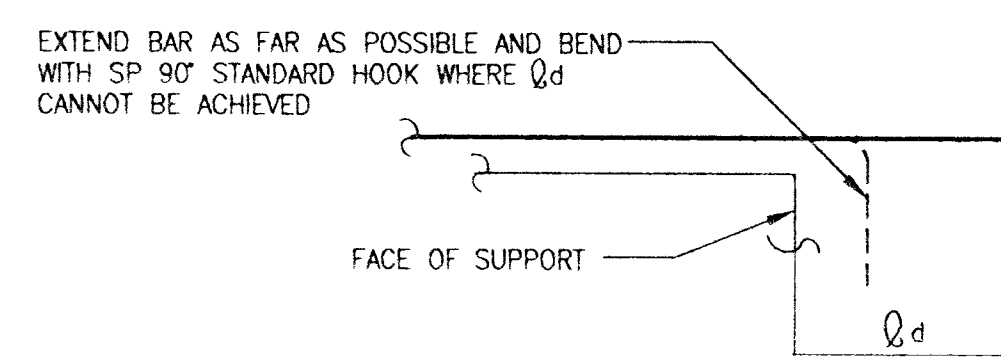
- NOTES:
- THE ABOVE SHALL BE MINIMUM REINF. FOR ALL MASONRY ELEMENTS.
 - SINGLE MAT REINFORCING SHALL BE IN CENTER OF WALL UNLESS OTHERWISE NOTED OR DETAILED.
 - FOR MASONRY WALLS FILL ALL CELLS SOLID WITH GROUT, U.N.O.
 - ALL HORIZ. BARS SHALL BE IN BOND BEAM UNITS, U.N.O.

MINIMUM REINFORCING FOR MASONRY WALLS

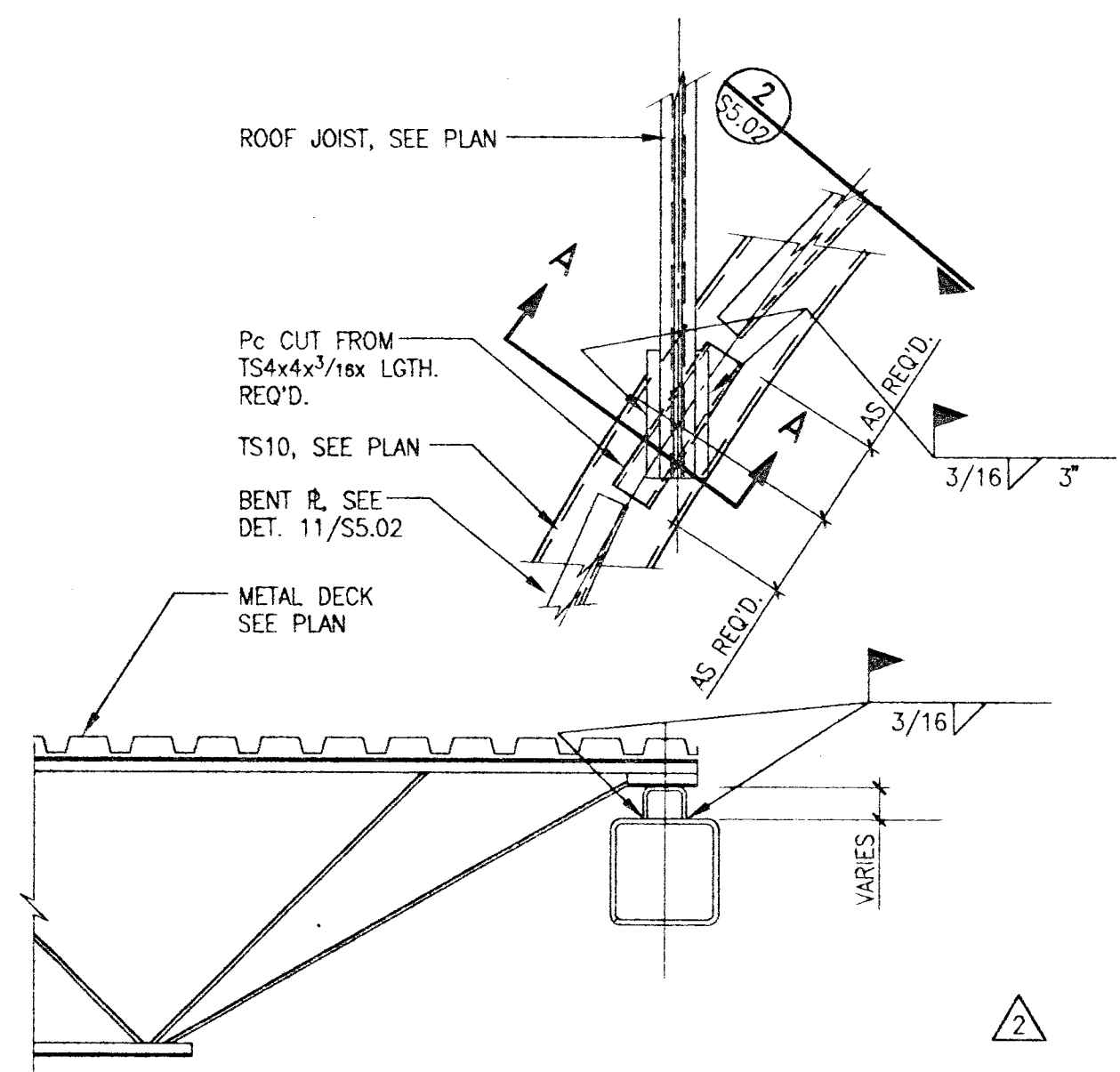
DETAIL 6

TENSION DEVELOPMENT

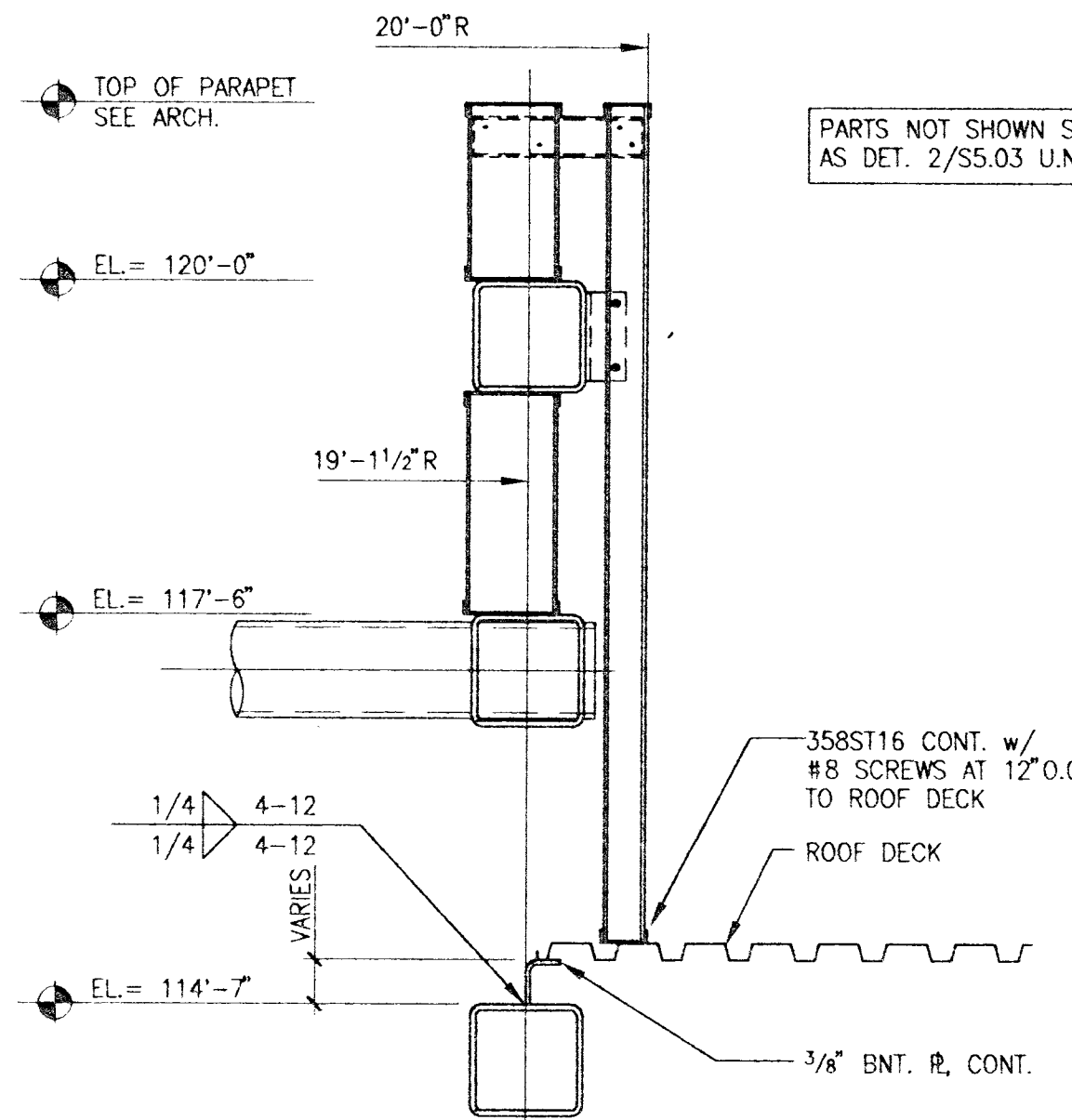
BAR SIZE	f'c = 3000 psi		CASE 2	CASE 1
	TOP BARS	OTHER BARS		
#3	22	32	17	25
#4	29	43	22	33
#5	36	54	28	41
#6	43	64	33	50
#7	63	94	48	72
#8	72	107	55	82
#9	81	121	62	93
#10	91	136	70	105
#11	101	151	78	116
#14	121	181	93	139
#18	161	241	124	185



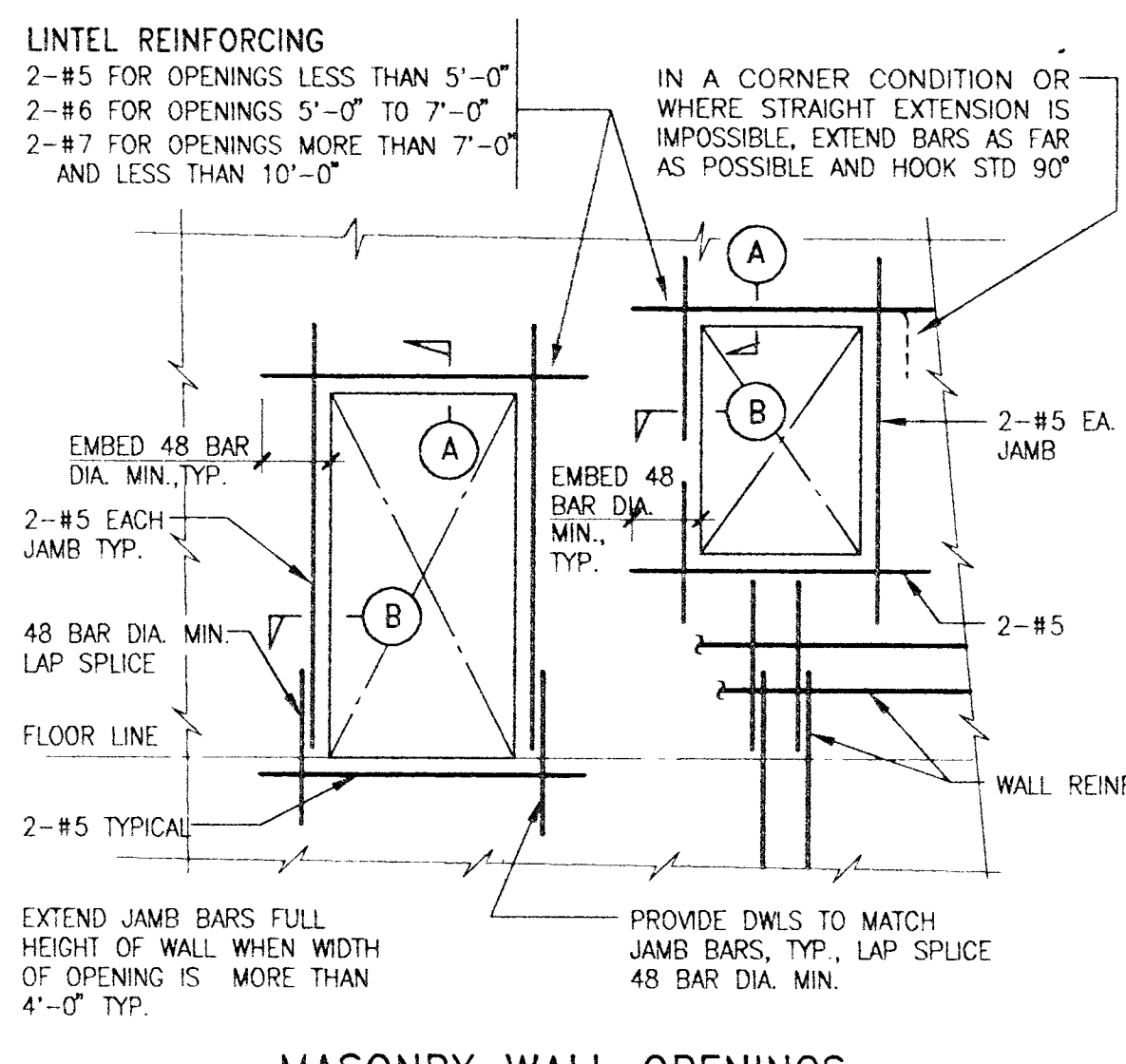
DETAIL 6



DETAIL 15



DETAIL 11



DETAIL 7

TENSION LAP SPICE

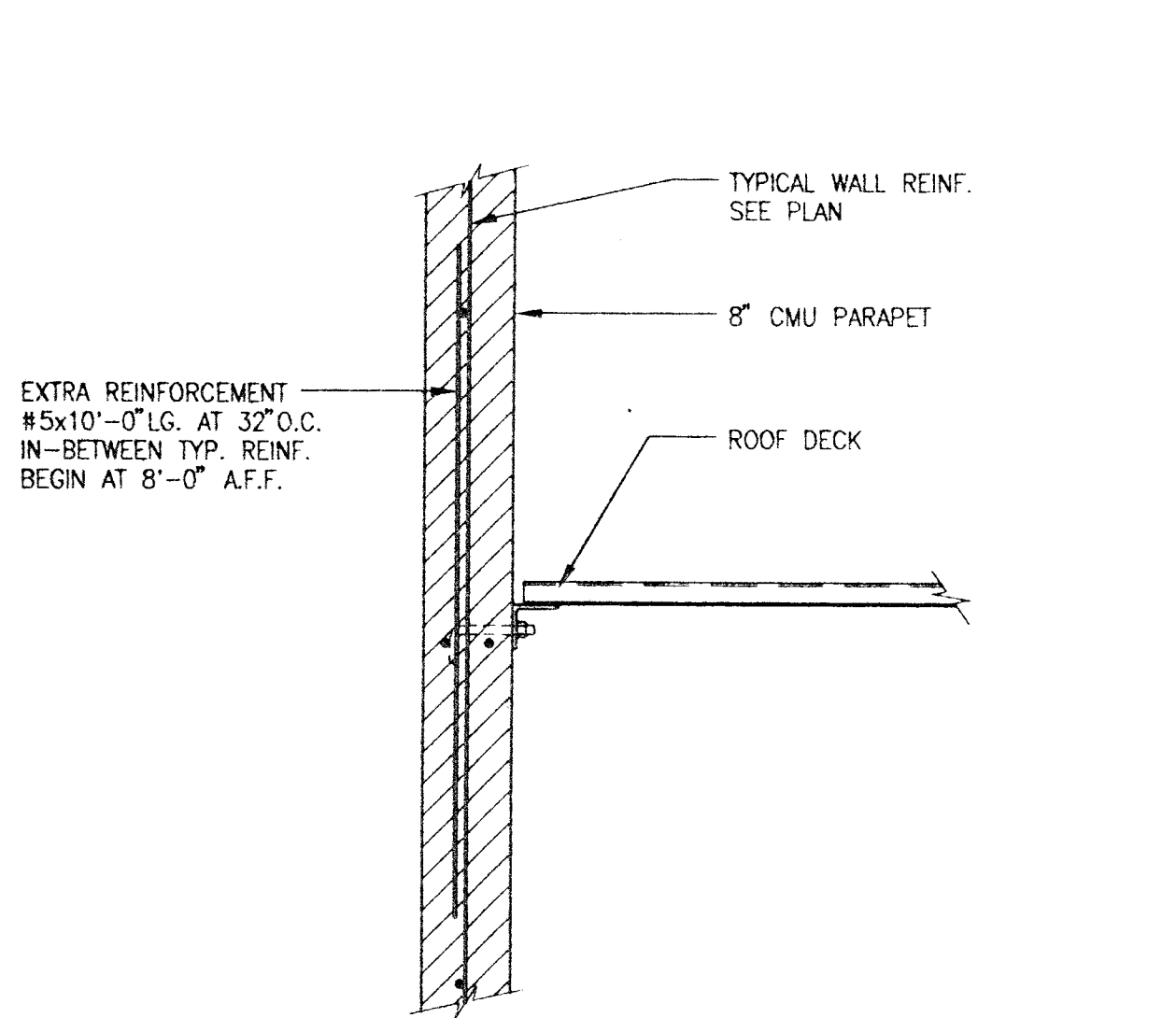
TENSION LAP SPICE LENGTHS, (IN INCHES) FOR GRADE 60 UNCOATED BARS

BAR SIZE	LAP CLASS	f'c = 3000 psi		CASE 1	CASE 2
		TOP BARS	OTHER BARS		
#3	A	22	32	17	25
#3	B	28	42	22	32
#4	A	29	43	22	33
#4	B	37	56	29	43
#5	A	36	54	28	41
#5	B	47	70	36	54
#6	A	43	64	33	50
#6	B	56	84	43	64
#7	A	63	94	48	72
#7	B	81	122	63	94
#8	A	72	107	55	82
#8	B	93	139	72	107
#9	A	81	121	62	93
#9	B	105	157	81	121
#10	A	91	136	70	105
#10	B	118	177	91	136
#11	A	101	151	78	116
#11	B	131	186	101	151

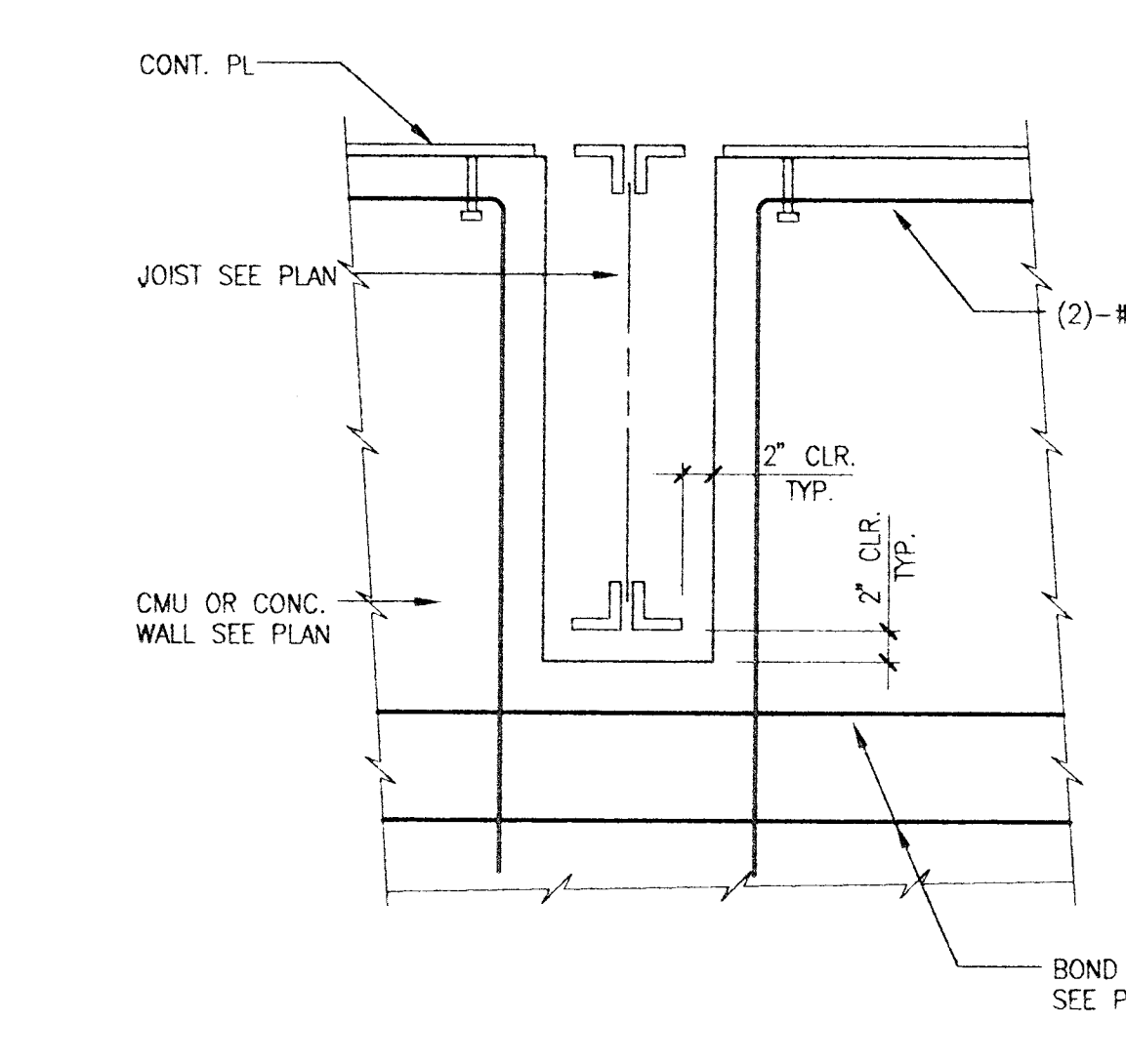
DETAIL 4

- NOTES:
- TABLE FOR USE WITH NORMAL WEIGHT HARDBLOCK CONCRETE AND GRADE 60 UNCOATED REINFORCING BARS. FOR LIGHTWEIGHT AGGREGATE USE 1.3 Qd
 - CLASS A - HALF OR LESS OF THE BARS ARE SPICED WITHIN A REQUIRED LAP LENGTH.
 - CLASS B - MORE THAN HALF OF THE BARS ARE SPICED WITHIN A REQUIRED LAP LENGTH.
 - TOP BARS ARE HORIZONTAL BARS WITH 12" OR MORE OF CONCRETE CAST IN THE MEMBER BELOW THE BAR.
 - FOR BARS ENCLOSED IN STANDARD COLUMN SPIRALS, USE 0.75 Qd OR 12" MIN.
 - LAP SPICES OF INDIVIDUAL BARS WITHIN A BUNDLE SHALL BE 1.2 Qd FOR THAT BAR IN A 3-BAR BUNDLE AND 1.33 Qd FOR A 4-BAR BUNDLE. ENTIRE BUNDLES SHALL NOT BE LAP SPICED AT THE SAME LOCATION. SPICES FOR INDIVIDUAL BARS WITHIN A BUNDLE SHALL BE STAGGERED SUCH THAT THEY DO NOT OVERLAP.
 - Qd - BASIC LAP LENGTH, SHOWN AT LEFT.
 - CASE SELECTION
 - FOR FOUNDATION REINFORCEMENT, USE CASE 1 UNO.
 - FOR COLUMN REINFORCEMENT AND DOWELS, USE CASE 1 UNO.
 - FOR BEAM REINFORCEMENT, USE CASE 1 UNO.
 - FOR STRUCTURAL SLAB REINFORCEMENT, USE CASE 2 UNO.
 - FOR SLAB ON GRADE REINFORCEMENT, USE CASE 1 UNO.
 - FOR WALL REINFORCEMENT AND DOWELS, USE CASE 1 (EXCEPT AS NOTED BELOW) UNO.
 - FOR WALLS WITH A SINGLE MAT OF STEEL CENTERED IN THE WALL, USE CASE 1 FOR WALL REINFORCEMENT AND DOWELS UNO.
 - FOR CHORD STEEL REINFORCEMENT, USE CASE 2 UNO.

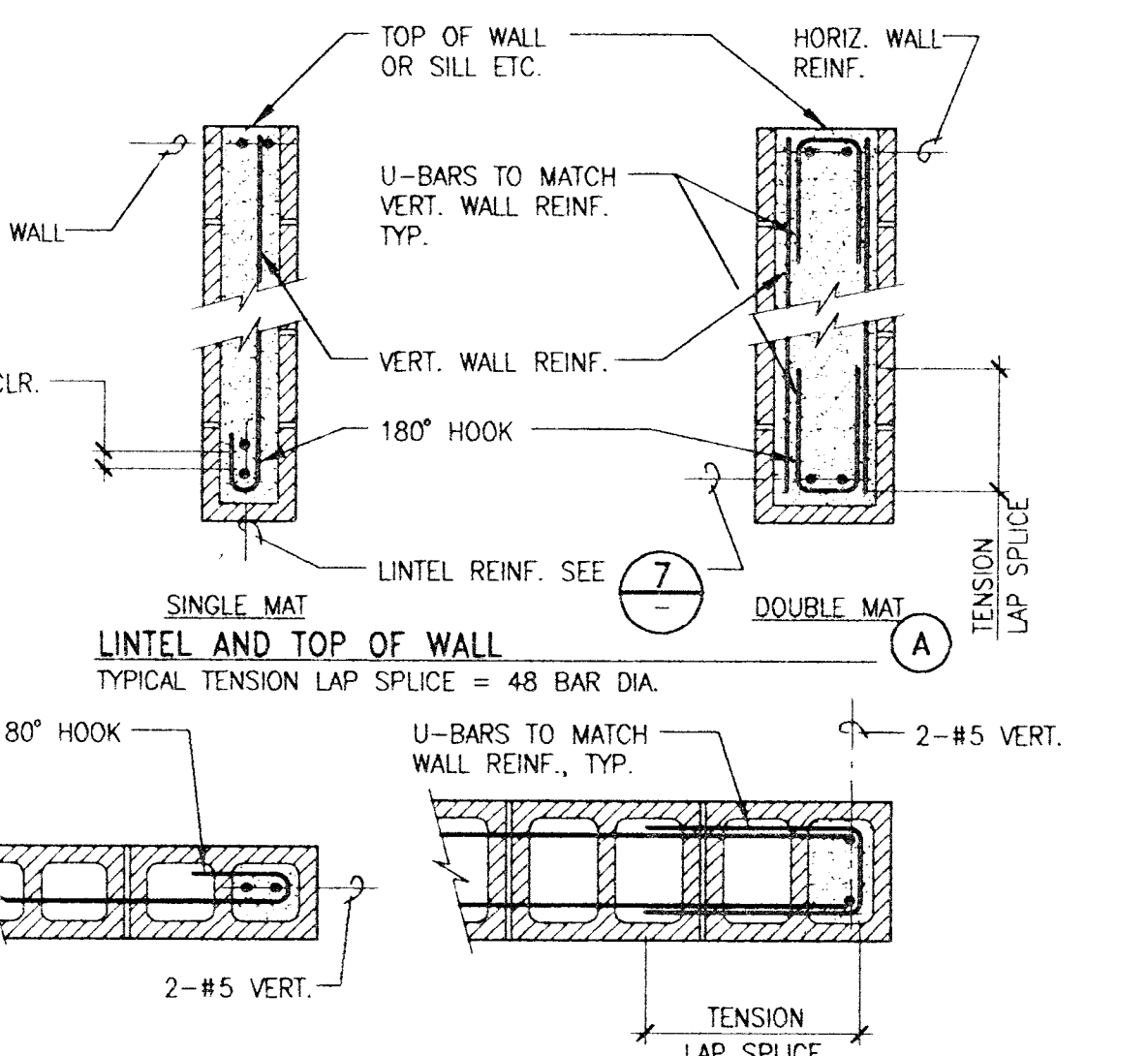
DETAIL 1



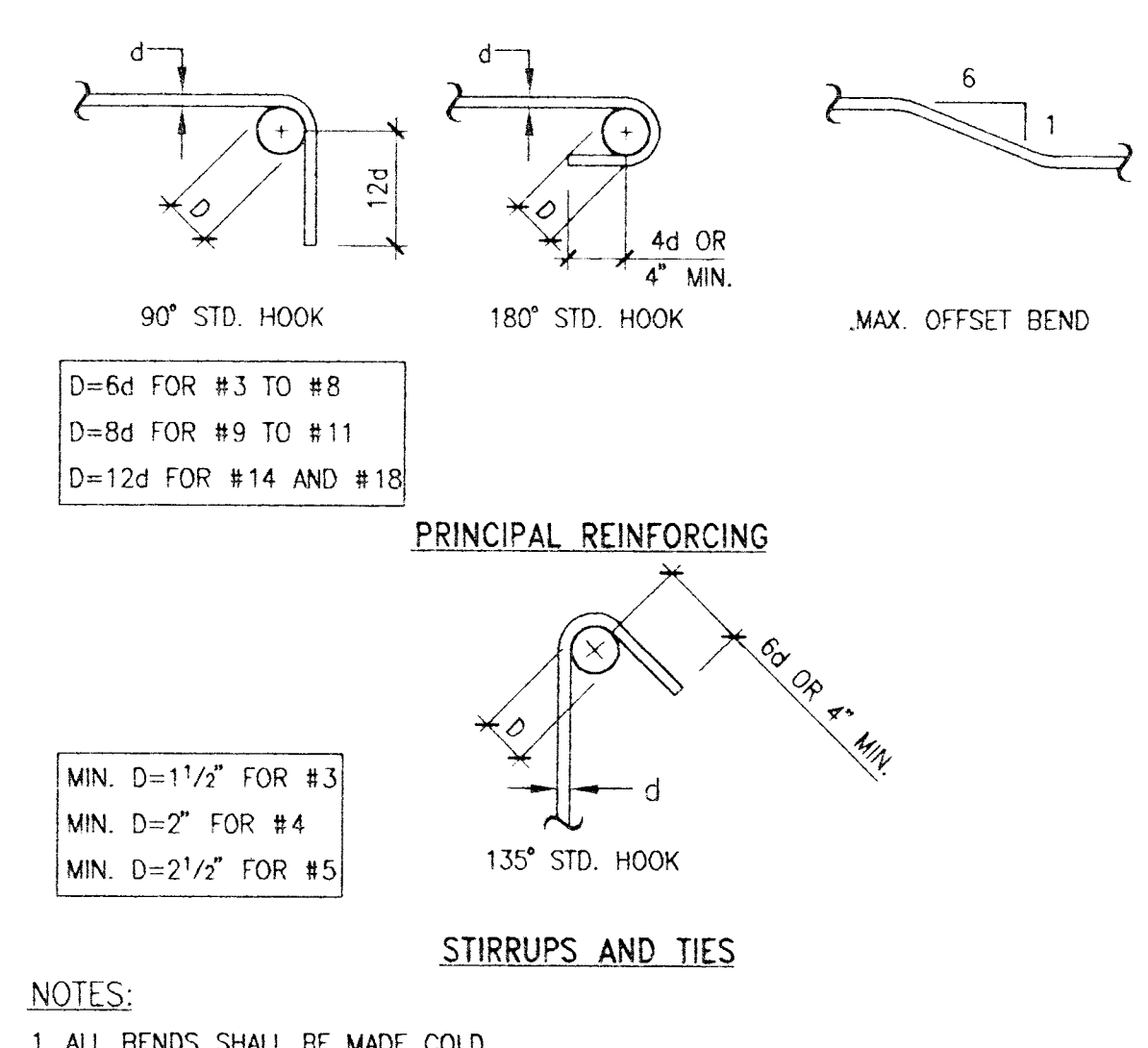
DETAIL 16



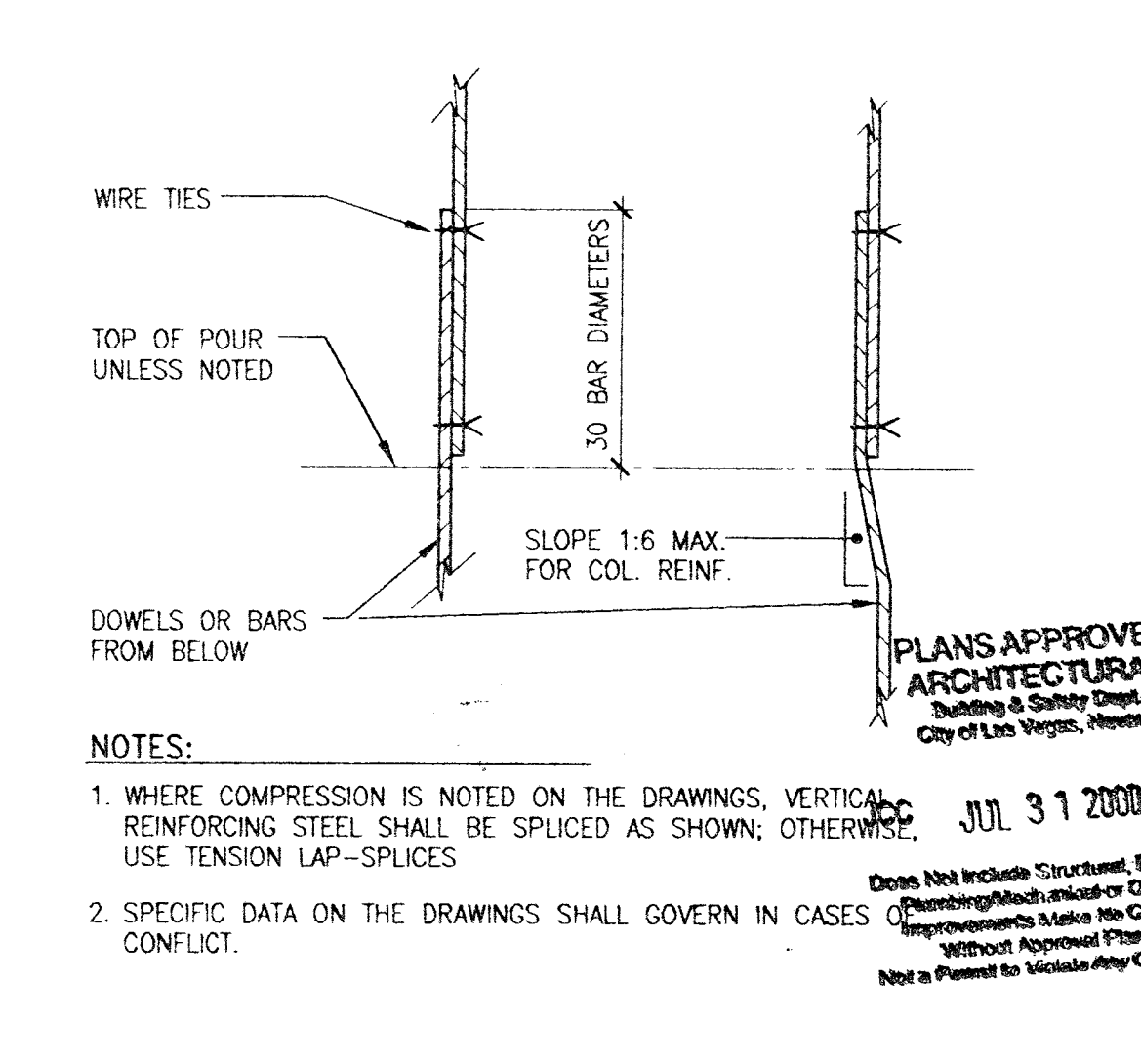
DETAIL 12



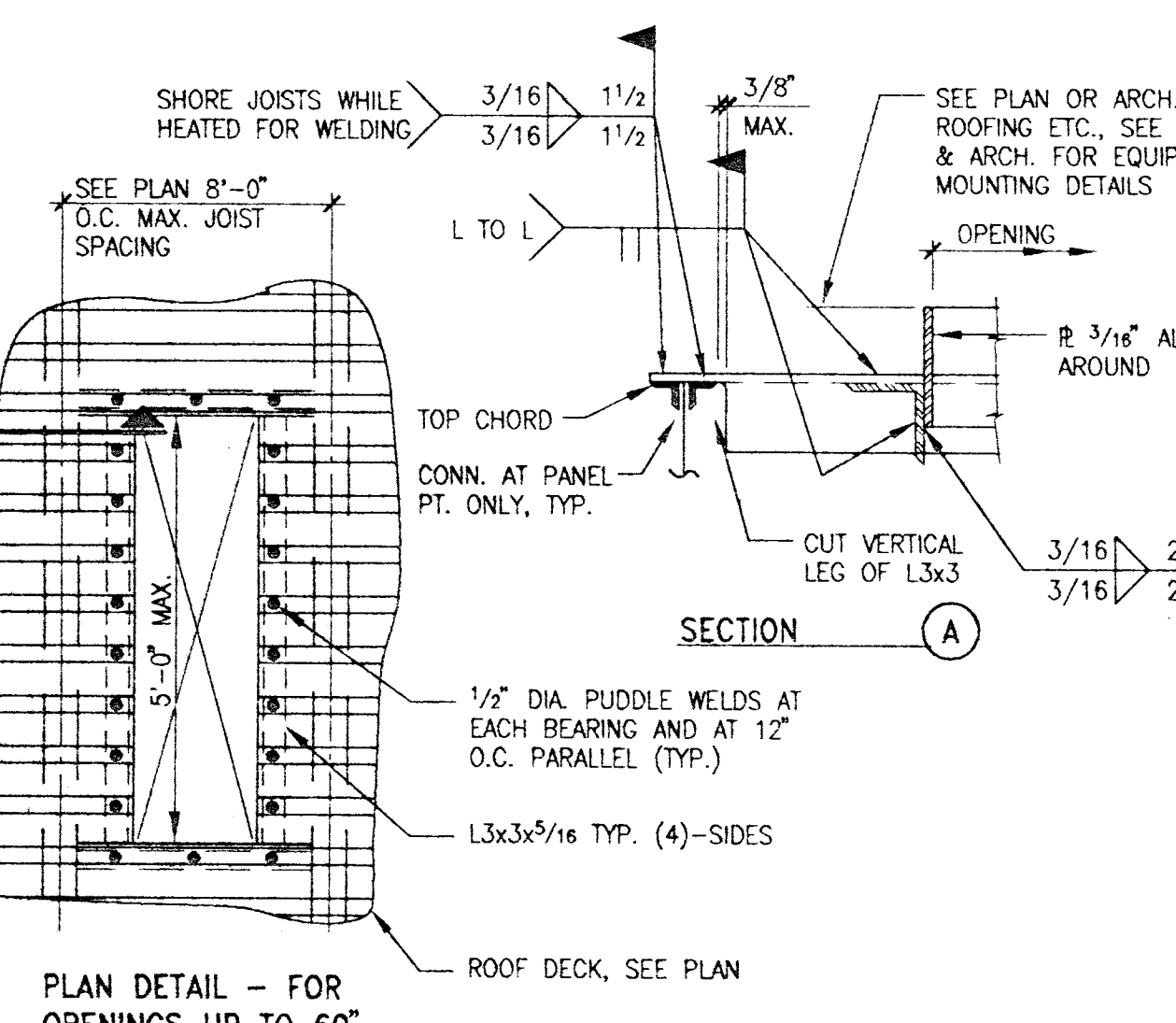
DETAIL 8



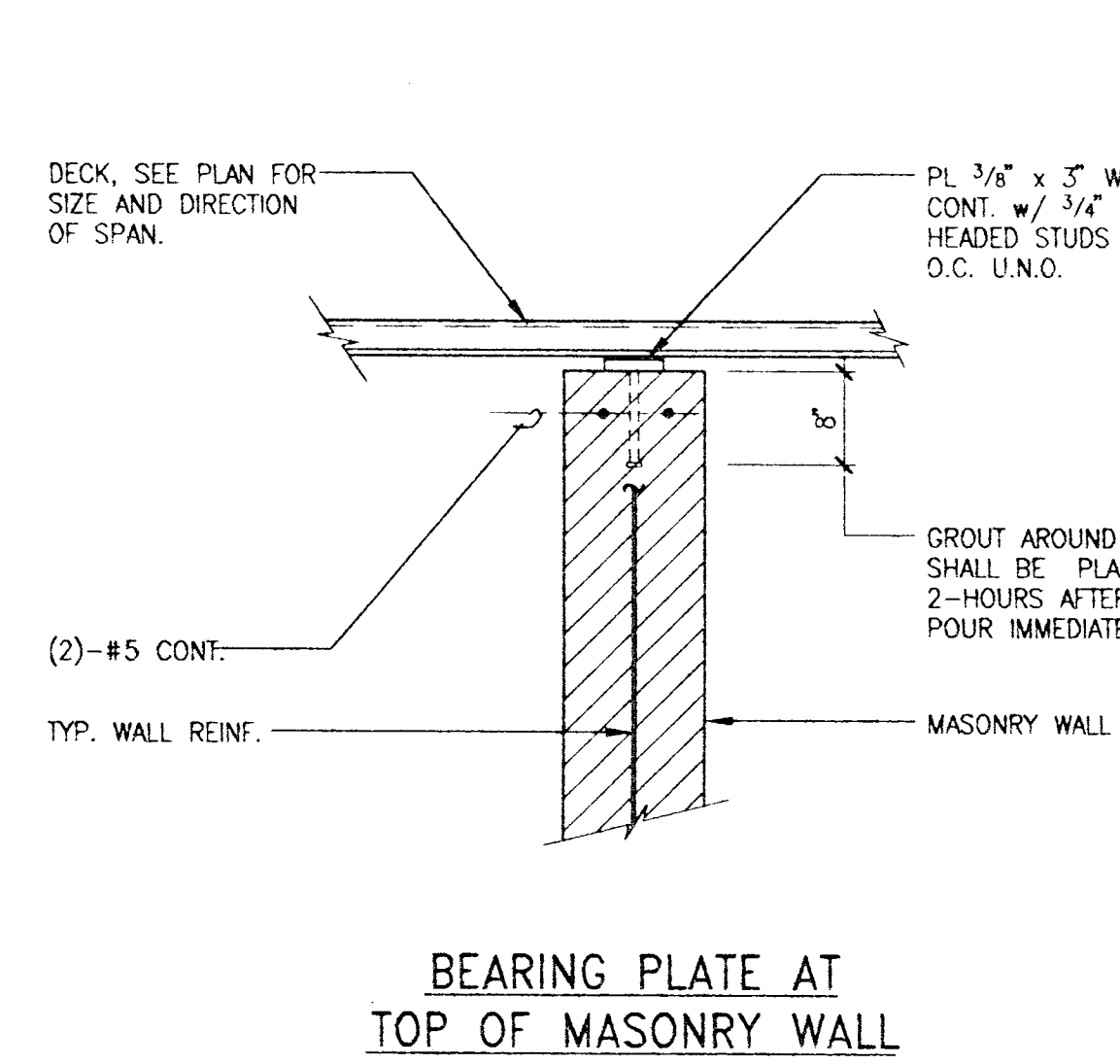
DETAIL 4



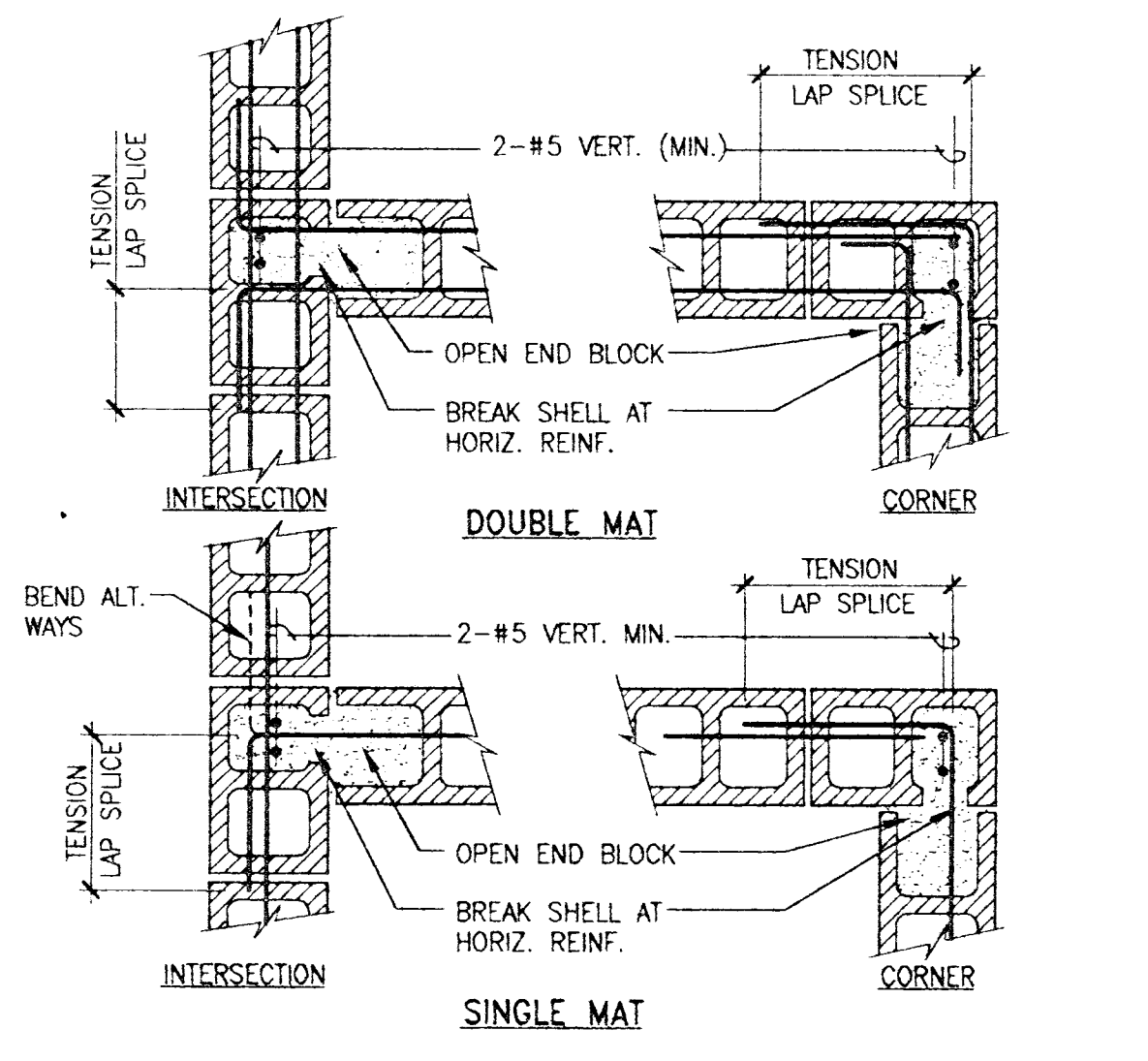
DETAIL 3



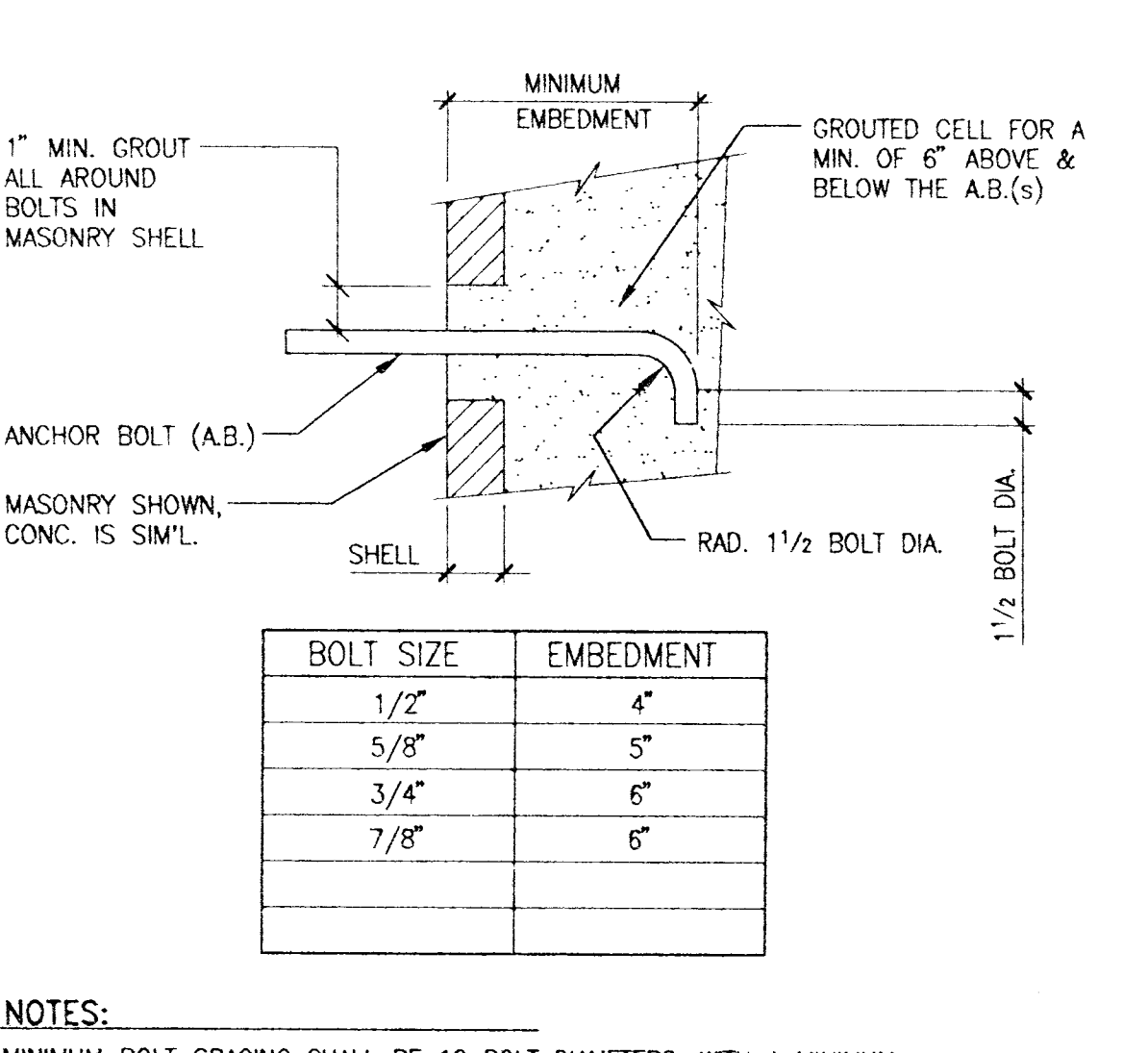
DETAIL 17



DETAIL 13



DETAIL 9



DETAIL 5

LUCCHESI • GALATI • ARCHITECTS

STATE OF NEVADA
REGISTERED ARCHITECT
HARRY P. LUCCHESI
JAMES J. GALATI
JAN 27 2000

SECTION & DETAILS

SUMMERLIN ARBORS PARK POOL and POOL BUILDING

RECEIVED
JAN 31 2000
CITY OF LAS VEGAS
PLANNING PERMITS

ONE HOUR FIRE-RESISTIVE CONSTRUCTION THROUGHOUT

PLANS APPROVED ARCHITECTURAL
JUL 31 2000
Does Not Include Structural Checks
(Strength/Deflection/Drift/Slip/Improvements/Make No Change/Without Approval/Plan is Not a Permit to Locate Any Code)

Date: 10/22/99
Project No. 99035.00
Scale: AS NOTED
Drawn By: SIS

BENNETT & JIMENEZ, INC.
STRUCTURAL ENGINEERS
2481 N. Decatur Blvd.
Suite B
Las Vegas, NV 89108
B&J JOB NO.: 81011
Phone (702) 631-0200
Fax (702) 631-0206

Sheet Number: **S5.02**

P1011551.02 PLOTTED BY: DUANE DATE: 01/26/00 TIME: 15:38 SCALE FACTOR: 1=1 PLOTTED: ARLOT