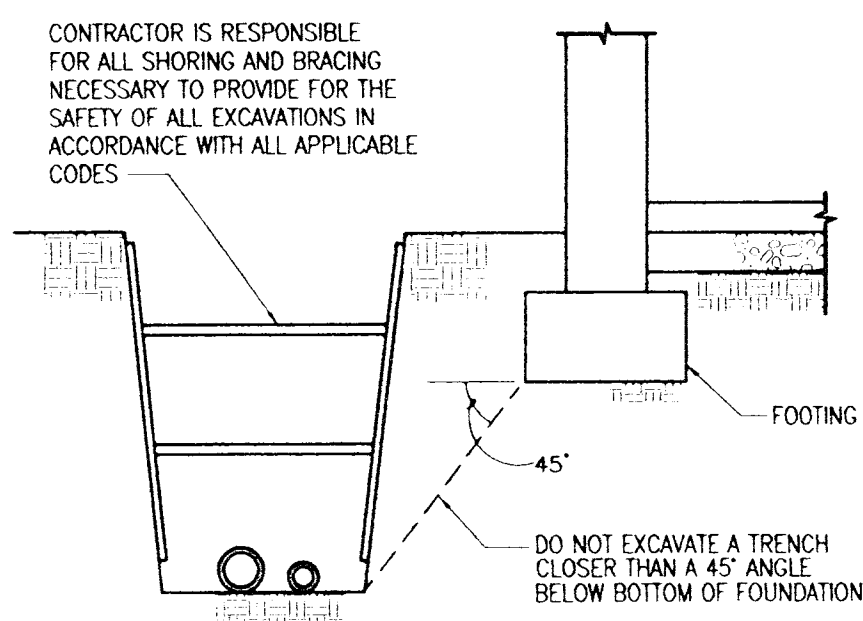
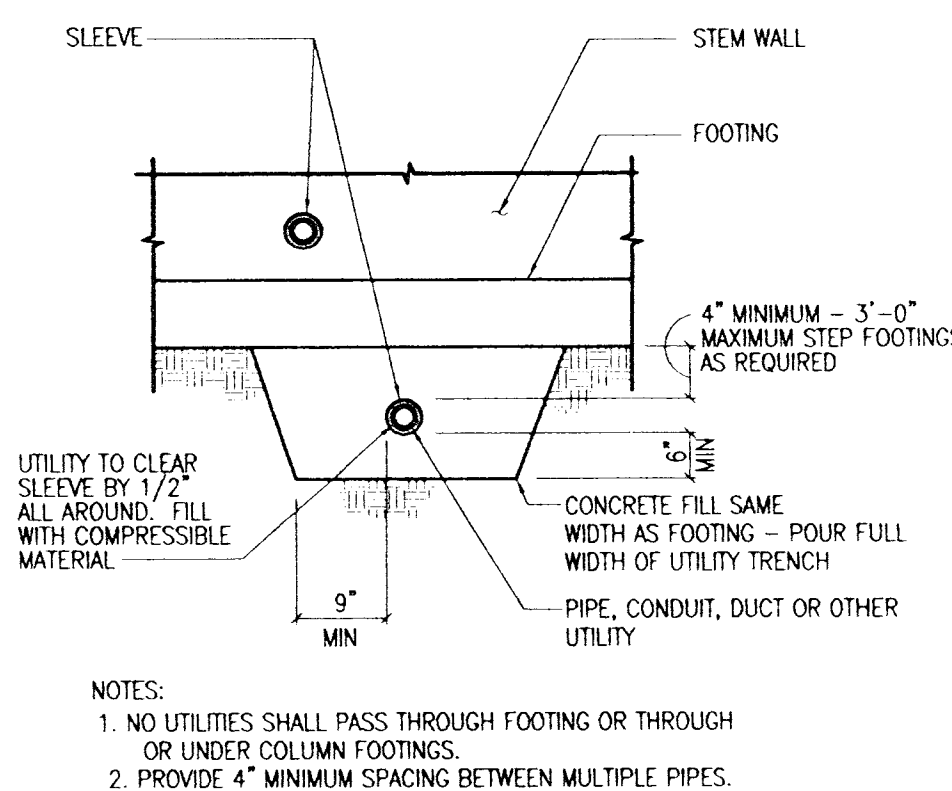


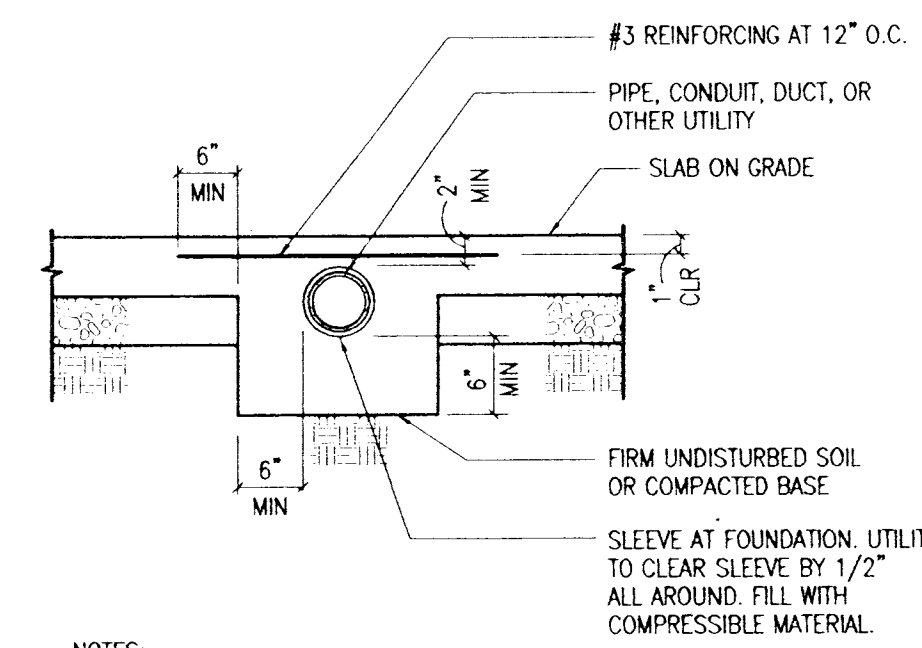
T1 MAXIMUM SLOPE BETWEEN ADJACENT FOOTINGS
TYPICAL DETAIL 201.01



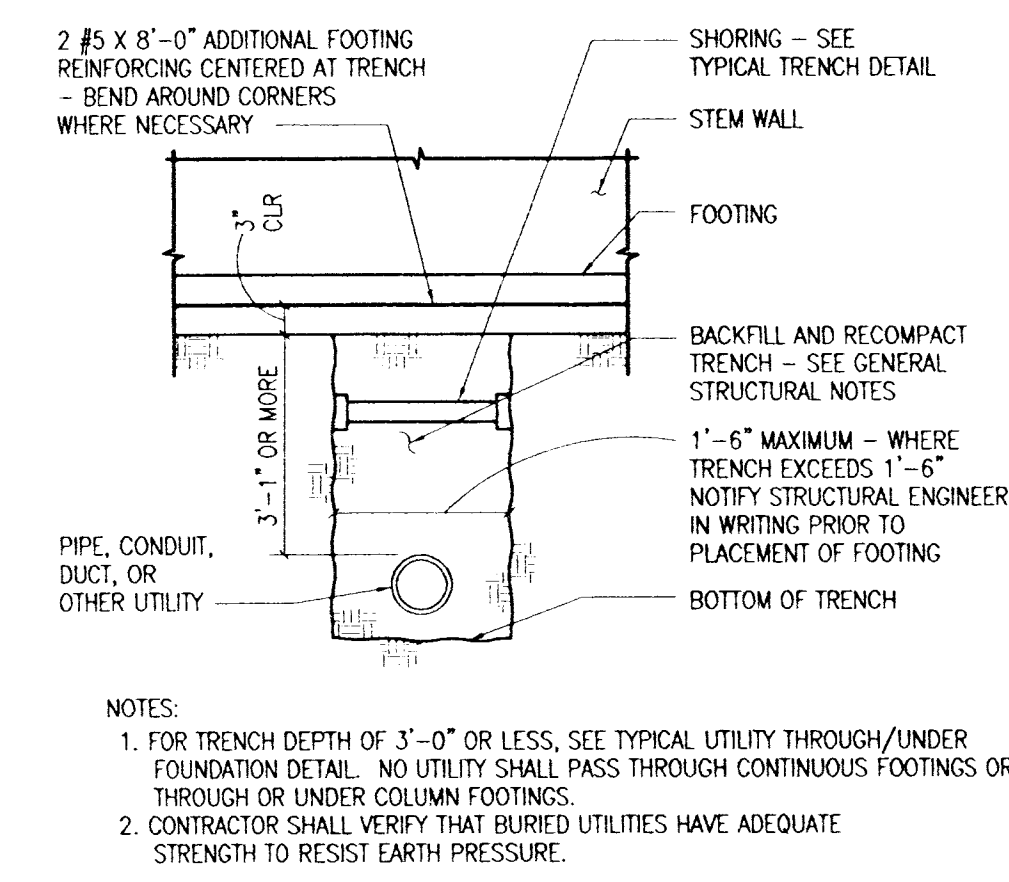
T2 TYPICAL TRENCH DETAIL
TYPICAL DETAIL 201.02



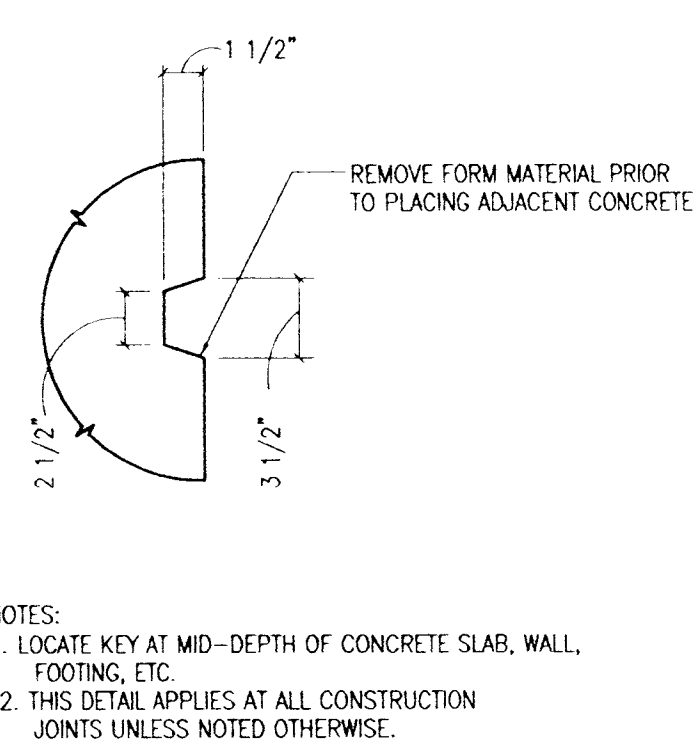
T3 UTILITIES THROUGH/UNDER FOUNDATION
TYPICAL DETAIL 201.03



T4 SLEEVE FOR UTILITY BELOW SLAB
TYPICAL DETAIL 201.04



T5 UTILITY PASSING BELOW WALL FOOTING IN TRENCH
TYPICAL DETAIL 201.05



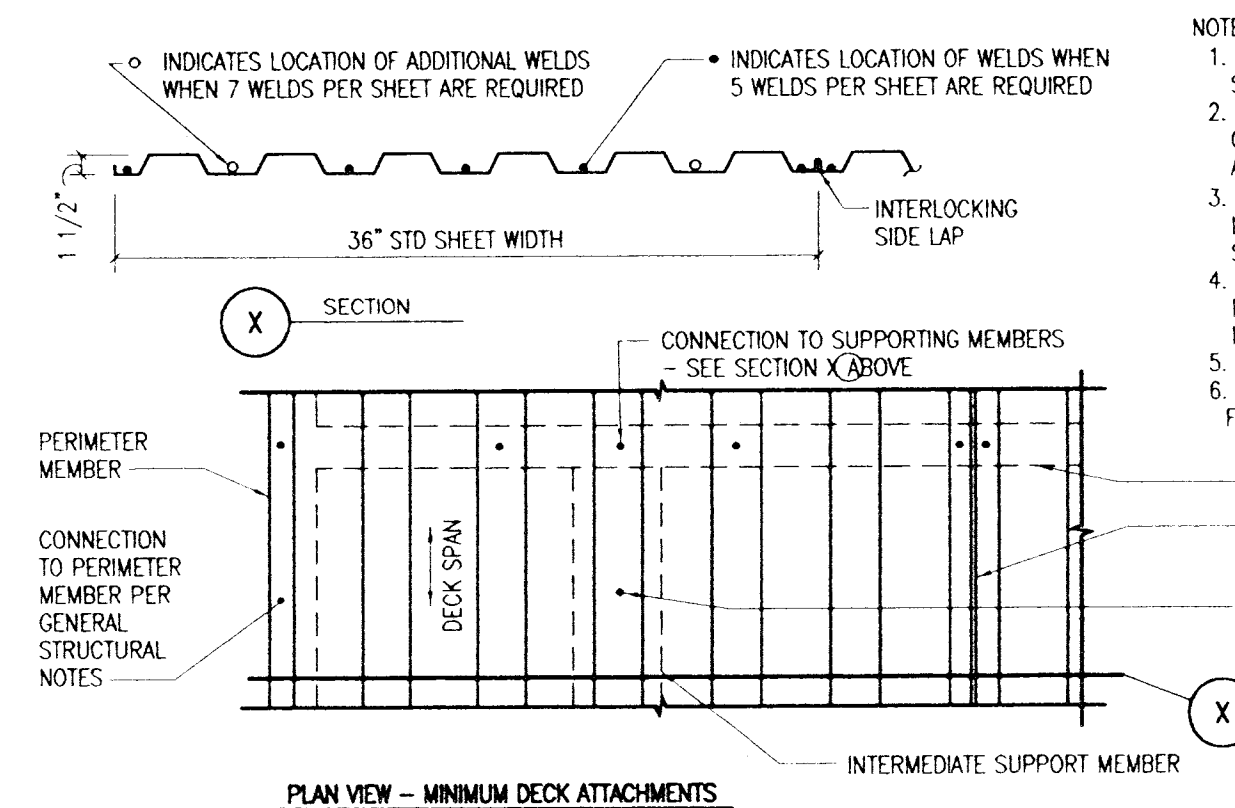
T6 TYPICAL KEY IN CONCRETE
TYPICAL DETAIL 201.06

BOLT DIAMETER	VERT BOLT EMBEDMENT LENGTH	HORIZ BOLT EMBEDMENT LENGTH
1/2"	7"	5"
5/8"	7"	5"
3/4"	8"	6"
7/8"	8"	6"
1"	9"	7"

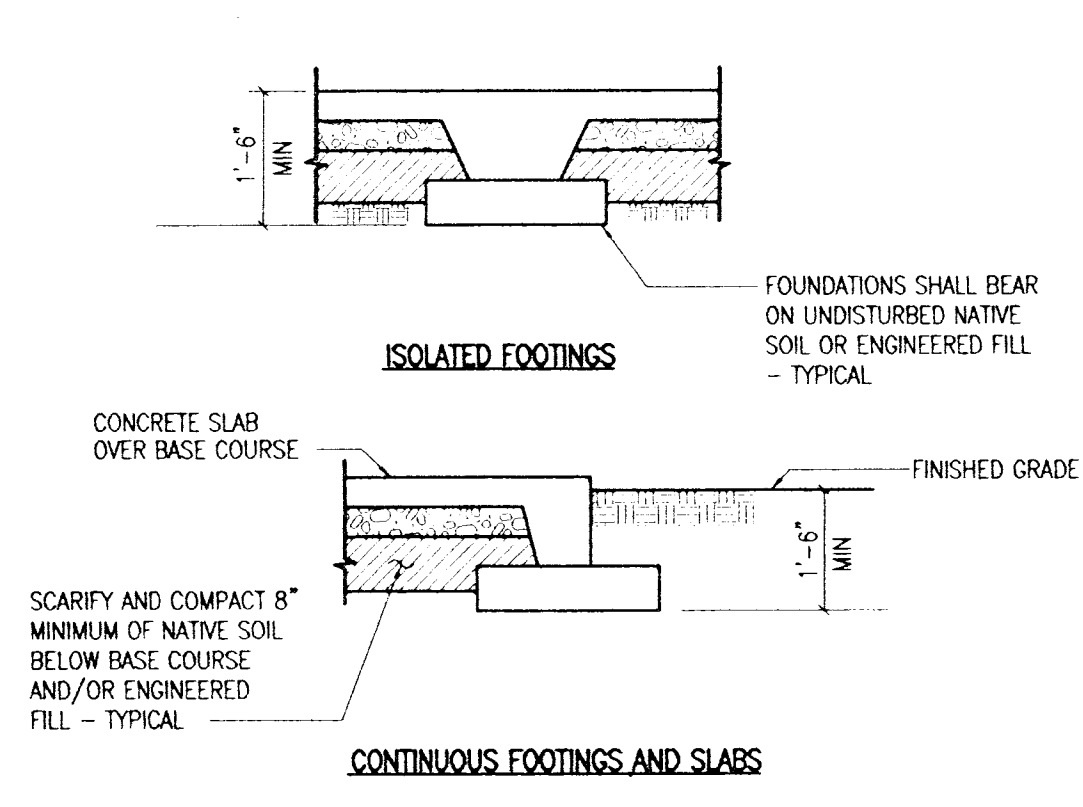
PROVIDE ANCHORS, ANCHOR BOLTS AND EXPANSION BOLTS PER THIS SCHEDULE IN CONCRETE OR MASONRY UNLESS NOTED OTHERWISE ON PLANS OR DETAILS. EXPANSION BOLTS SHALL NOT BE USED IN BRICK MASONRY.

EXPANSION BOLTS USED IN CMU SHALL BE A "TYPICAL" BY IOW RANSET/REDHEAD OR OTHERS WITH A CURRENT ICCO APPROVAL IN MASONRY. EXPANSION BOLTS SHALL BE CENTERED IN GROUDED CELLS. EXPANSION BOLTS AND EPOXY BOLTS SHALL BE USED ONLY WHERE SPECIFICALLY SHOWN ON THE DRAWINGS OR WHEN APPLICATION IS APPROVED IN WRITING BY THE STRUCTURAL ENGINEER.

T7 TYPICAL ANCHOR, ANCHOR BOLT, EXPANSION BOLT AND EPOXY BOLT SCHEDULE
TYPICAL DETAIL 501.11



T8 TYPICAL STEEL ROOF DECK ATTACHMENT
TYPICAL DETAIL 570.01



T9 TYPICAL EARTHWORK DETAIL
TYPICAL DETAIL 201.15

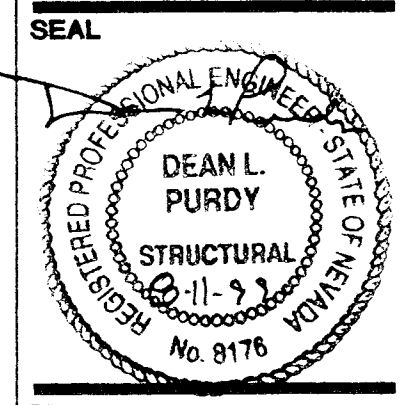
BAR SIZE	POSITION	CONCRETE f'c (PSI) AND LAP CLASS			
		A 3000	B 4000	A 5000	B
#3	TOP	18	21	18	18
	OTHER	18	18	18	18
#4	TOP	24	28	24	24
	OTHER	24	24	24	24
#5	TOP	27	35	24	24
	OTHER	24	27	24	24
#6	TOP	32	42	28	28
	OTHER	25	32	24	25
#7	TOP	38	49	33	29
	OTHER	29	38	25	24
#8	TOP	45	59	39	35
	OTHER	35	45	30	27
#9	TOP	57	74	50	44
	OTHER	44	57	38	34
#10	TOP	73	94	63	56
	OTHER	56	73	48	43
#11	TOP	89	116	77	69
	OTHER	69	89	59	53

T10 REINFORCING BAR LAP SPICE TABLE
TYPICAL DETAIL 201.12

REBAR LAP SPICE TABLE NOTES:
 1. S DENOTES BAR DIAMETER.
 2. ALL SPLICES SHALL BE CLASS B UNLESS OTHERWISE NOTED.
 3. VALUES APPLY TO ALL BARS WITH MINIMUM CONCRETE COVER OF 2d AND MINIMUM CENTER-TO-CENTER SPACING OF 4e.
 4. FOR BARS WITH COVER BETWEEN d AND 2d, MULTIPLY VALUES BY 1.4.
 5. FOR BARS WITH CENTER-TO-CENTER SPACING BETWEEN 3d AND 4d, MULTIPLY VALUES BY 1.4.
 6. FOR BARS NOT MEETING ABOVE REQUIREMENTS, MULTIPLY BY 2.0.
 7. FOR LIGHTWEIGHT CONCRETE, MULTIPLY BY 1.3.
 8. TOP BAR IS DEFINED AS HORIZONTAL BAR WITH MORE THAN 12 INCHES OF CONCRETE BELOW.
 9. FOR VERTICAL BARS, USE VALUES FOR "OTHER" POSITION.

De REVERE ARCHITECT OF NEVADA, INC.
 1501 30TH STREET, SUITE 100
 PHOENIX, ARIZONA 85016
 PHONE 602-957-8880
 SUPPORT OFFICE, CALIFORNIA, 2000 S RD 74-05-001

DFD ARCHITECTURE
 4201 North 24th Street
 Suite 100
 Phoenix, Arizona 85016
 phone 602.957.4758
 fax 602.957.9603



SPORTS PARK PHASE ONE
 SUMMERLIN VILLAGE 11/12
 LAS VEGAS, NEVADA

PLANS APPROVED
 ARCHITECTURAL
 BUILDING & PLUMBING
 City of Las Vegas, Nevada
 JCC JUL 31 2000
 Does Not Include Structural, Electrical, Plumbing/Mechanical or Civil Site Improvements. Make No Change Without Approval. This is Not a Permit to Violate Any Ordinances.

ONE HOUR
 FIRE-RESISTIVE
 CONSTRUCTION
 THROUGHOUT

PLANS APPROVED
 STRUCTURAL
 BUILDING & PLUMBING
 City of Las Vegas, Nevada
 SEP 14 2000

RECEIVED
 MAY - 5 2000
 CITY OF LAS VEGAS
 CENTRAL PLANNING

DESIGN REVIEW	
DESIGN DEVELOPMENT	
CONSTRUCTION DOCUMENTS	
BD/PRICING PACKAGE	
CONSTRUCTION ISSUE	
DATE ISSUED	3/3/98
DRAWN BY	JDJ
CHECKED BY	DLP
PROJECT NO.	95244
CADD FILE	S102.DWG
DRAWING NO.	S102

TLCP
 STRUCTURAL INC.
 PHOENIX, ARIZONA 602-563-8155
 TUCSON, ARIZONA 520-293-1414
 YUMA, ARIZONA 909-293-2666
 FAX 602-563-8255 FAX 520-293-1623 FAX 909-293-2629

THESE DRAWINGS ARE OWNED BY TLCP STRUCTURAL, INC. ANY REPRODUCTION OR USE IN WHOLE OR IN PART INCLUDING REPRODUCTION, PHOTOCOPYING, PERMISSION IS STRICTLY FORBIDDEN.