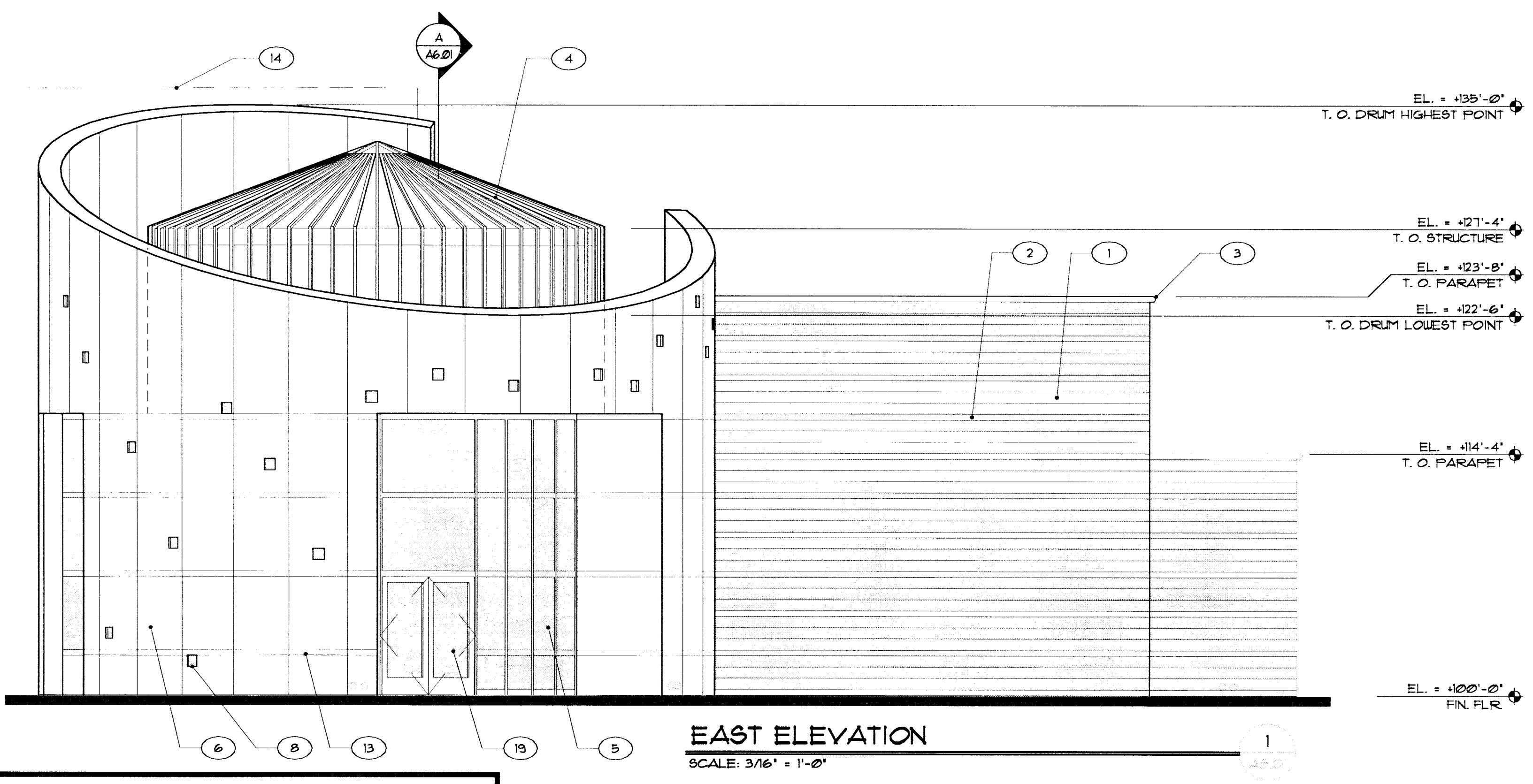


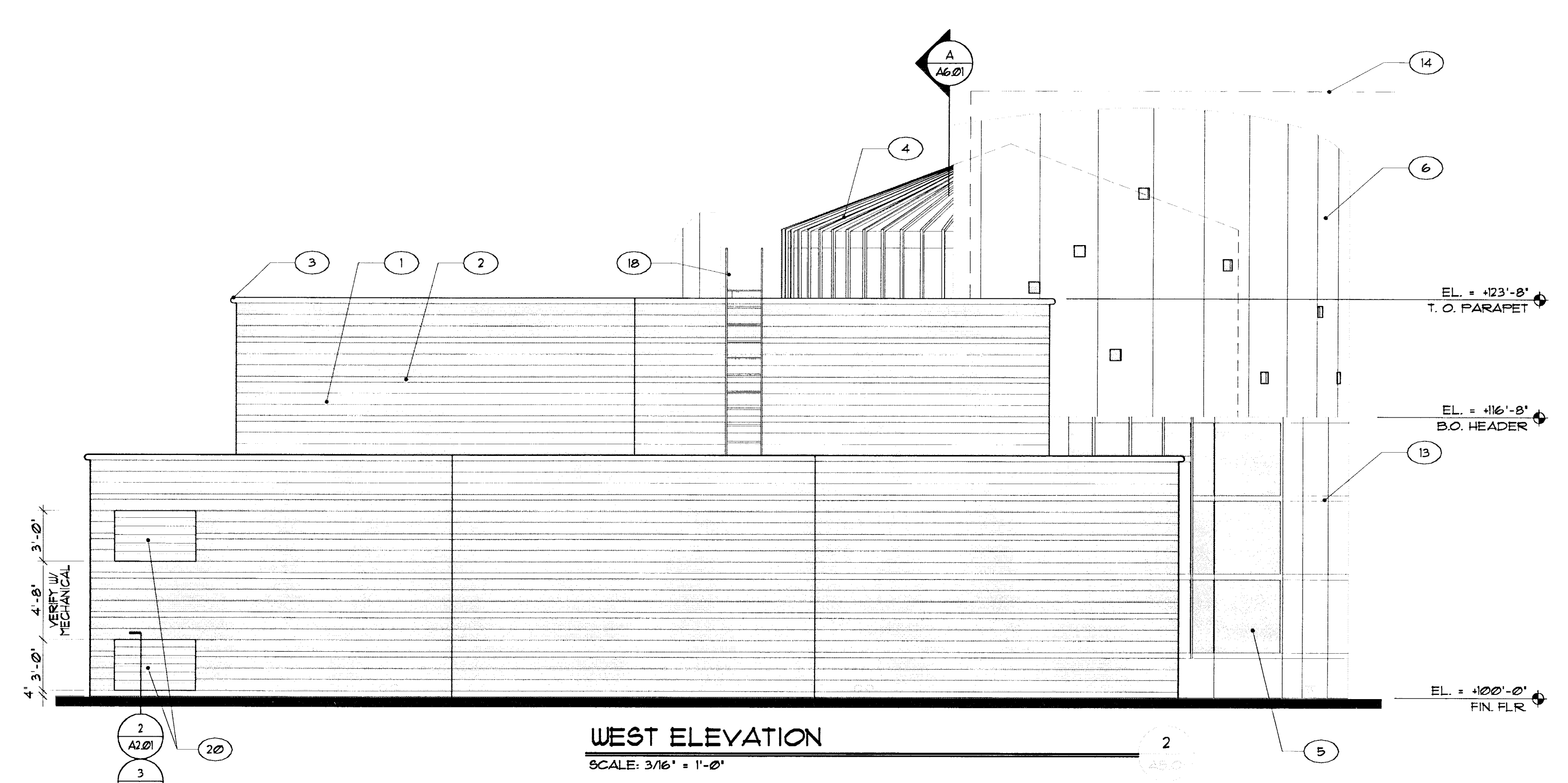
EXTERIOR ELEVATIONS  
SUMMERLIN ARBORS PARK  
POOL AND POOL BUILDING

Revisions:  
Date: October 22, 1999  
Project No. 980235-00  
Scale: 3/16" = 1'-0"  
Drawn By: DDT

Sheet Number:  
**A5.01**

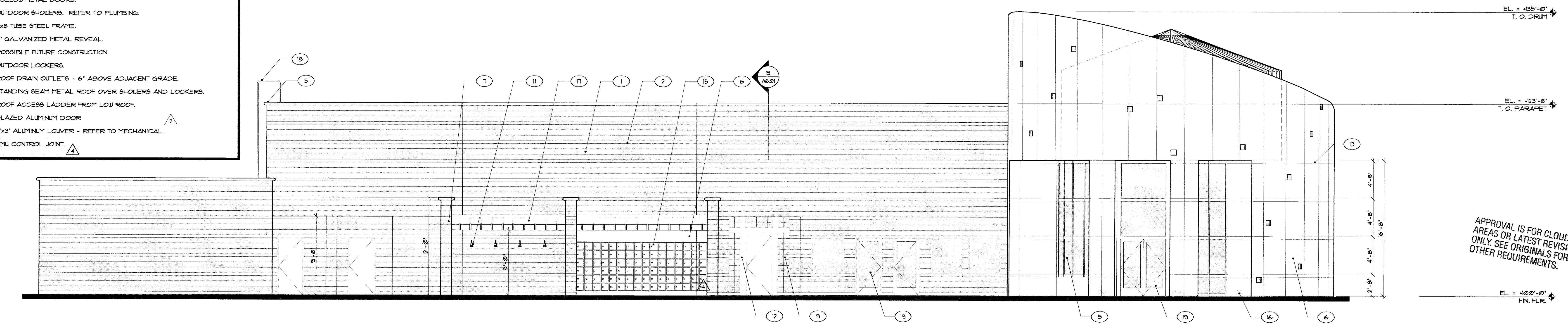


**EAST ELEVATION**  
SCALE: 3/16" = 1'-0"



**WEST ELEVATION**  
SCALE: 3/16" = 1'-0"

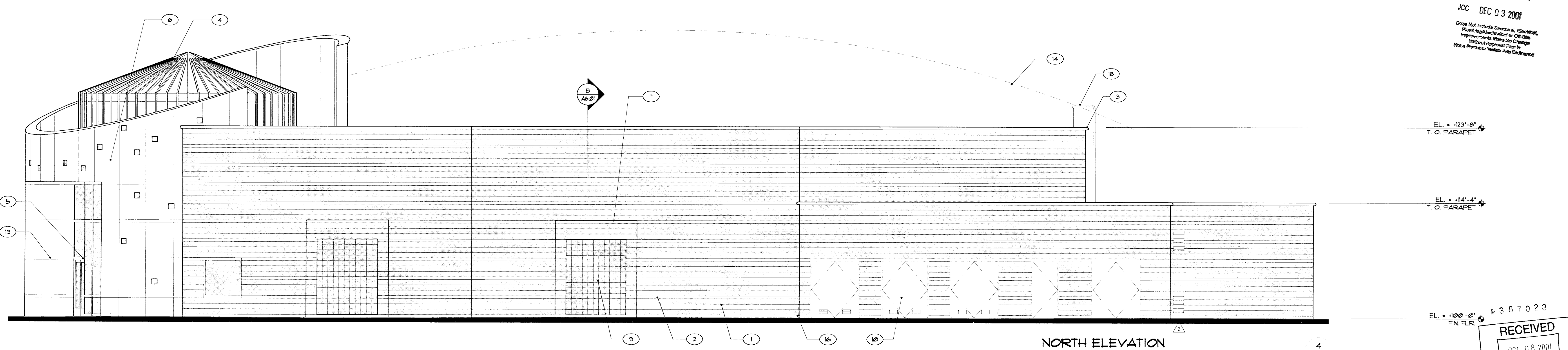
- KEYNOTES**
- 8' SPLIT FACE CMU
  - 4' HONED CMU
  - 4' BULLNOSE MASONRY CAP
  - STANDING SEAM METAL ROOF
  - 1" INSULATED GLAZING IN ALUMINUM FRAME
  - EXTERIOR INSULATED FINISH SYSTEM
  - OPENING IN CMU WALL
  - RANDOMLY PLACED 8x8 GLASS BLOCK OR ACRYLIC ROD
  - 8x8 GLASS BLOCK
  - HOLLOW METAL DOORS
  - OUTDOOR SHOWERS - REFER TO PLUMBING
  - 8x8 TUBE STEEL FRAME
  - 4' GALVANIZED METAL REVEAL
  - POSSIBLE FUTURE CONSTRUCTION
  - OUTDOOR LOCKERS
  - ROOF DRAIN OUTLETS - 6" ABOVE ADJACENT GRADE
  - STANDING SEAM METAL ROOF OVER SHOWERS AND LOCKERS
  - ROOF ACCESS LADDER FROM LOW ROOF
  - GLAZED ALUMINUM DOOR
  - 20.5x3' ALUMINUM LOUVER - REFER TO MECHANICAL
  - CMU CONTROL JOINT



**SOUTH ELEVATION**  
SCALE: 3/16" = 1'-0"

APPROVAL IS FOR CLOUDED AREAS OR LATEST REVISION ONLY. SEE ORIGINALS FOR OTHER REQUIREMENTS.

PLANS APPROVED ARCHITECTURAL Building & Safety Dept. City of Las Vegas, Nevada  
JCC DEC 03 2001  
Does Not Include Structural, Electrical, Plumbing, Mechanical or Civil. Improvements Made Not Change Without Approval. Plan is Not a Permit to Violate Any Ordinances.



**NORTH ELEVATION**  
SCALE: 3/16" = 1'-0"

